

977 +/- Acre Farm & Recreational Tract
0 OLD PORT GIBSON RD
Utica, MS 39175

\$4,650,000
977± Acres
Hinds County



**977 +/- Acre Farm & Recreational Tract
Utica, MS / Hinds County**

SUMMARY

Address

0 OLD PORT GIBSON RD

City, State Zip

Utica, MS 39175

County

Hinds County

Type

Farms, Hunting Land, Recreational Land, Business Opportunity,
Ranches

Latitude / Longitude

32.16077 / -90.689877

Acreage

977

Price

\$4,650,000

Property Website

<https://www.mossyoakproperties.com/property/977-acre-farm-recreational-tract/hinds/mississippi/107062/>



977 +/- Acre Farm & Recreational Tract Utica, MS / Hinds County

PROPERTY DESCRIPTION

977± Acres of Prime Tillable & Hunting Land with Income Potential

Old Port Gibson Rd, Utica, MS 39175

Hinds County, Mississippi

Discover an exceptional opportunity to own **977± contiguous acres** in the highly desirable hunting and agricultural region of southern Hinds County. This diverse property offers a rare combination of **productive farmland, outstanding recreational value, and long-term investment potential.**

Featuring extensive tillable acreage capable of generating annual farm income, the property is equally attractive to sportsmen seeking a premier hunting destination. The area's reputation for strong populations of whitetail deer, wild turkey, and other native wildlife makes this tract an ideal recreational retreat. Southern Hinds County and the Old Port Gibson Road corridor are well known for quality hunting habitat and large landholdings.

Property Highlights

- 977± total acres
- Prime tillable farmland with income-producing potential
- Excellent deer and turkey hunting opportunities
- Diverse habitat supporting wildlife and recreation
- Investment, farming, ranching, and recreational uses
- Road frontage and convenient access
- Located in Hinds County near Utica, Mississippi
- Latitude: 32.16077
- Longitude: -90.689877

Ideal For

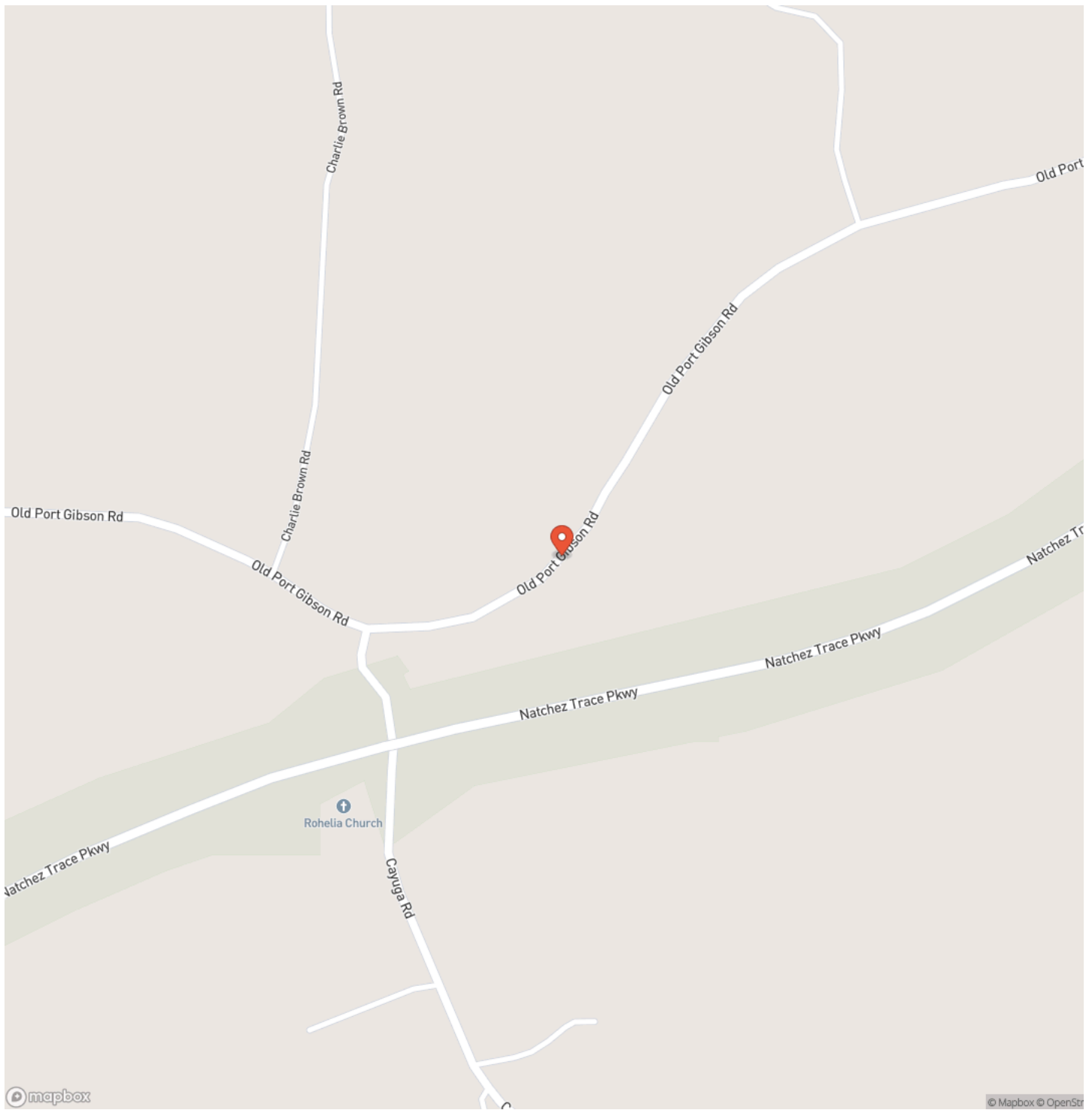
- Agricultural investors
- Row-crop farming operations
- Hunting clubs and outfitters
- Recreational land buyers
- Timber and land investors
- Corporate or family legacy ownership

This large-scale Mississippi landholding presents a unique chance to acquire a property that can provide both **future income potential and exceptional recreational enjoyment**, while offering the long-term appreciation potential associated with quality farmland and hunting land.

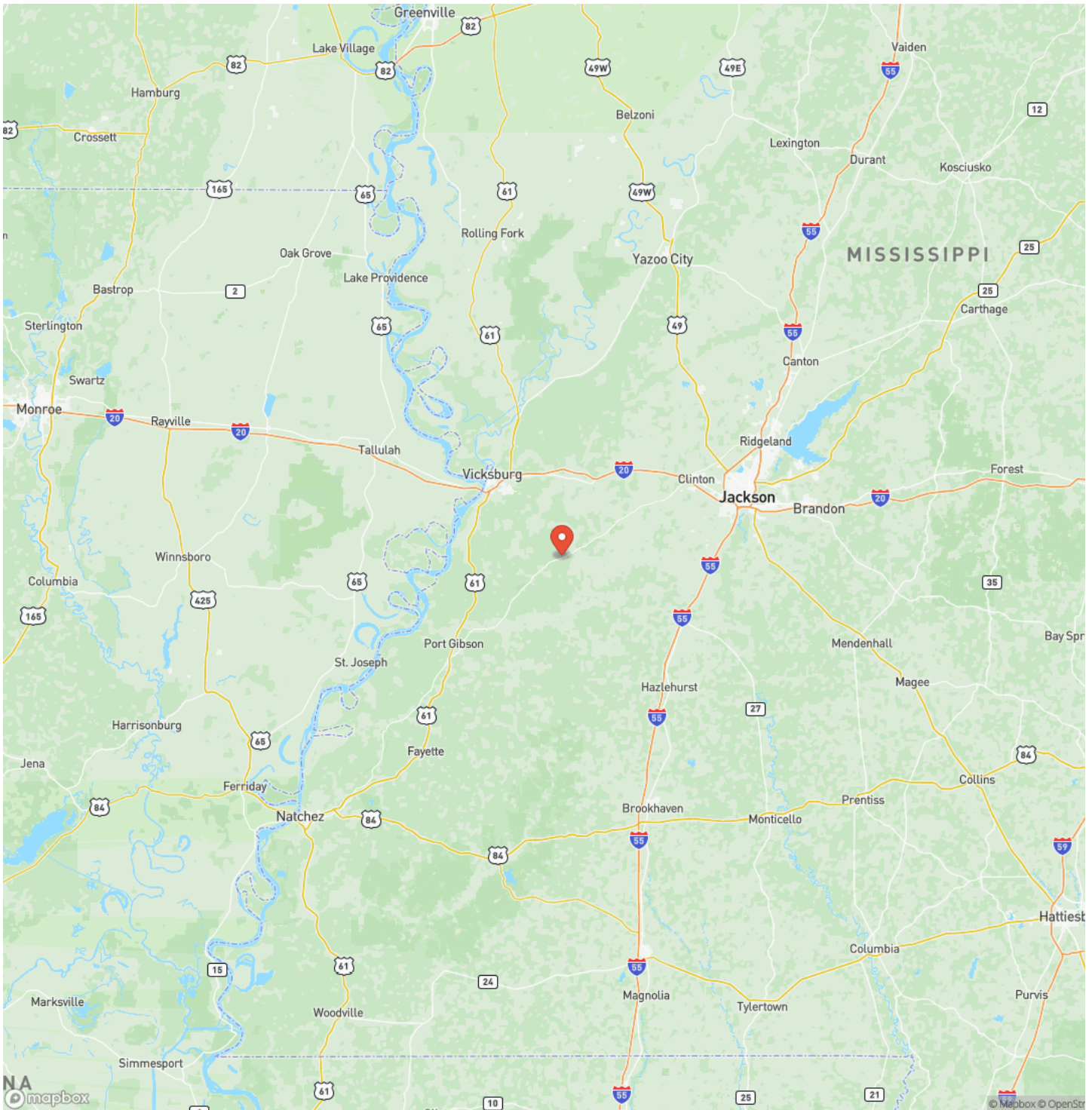
977 +/- Acre Farm & Recreational Tract
Utica, MS / Hinds County



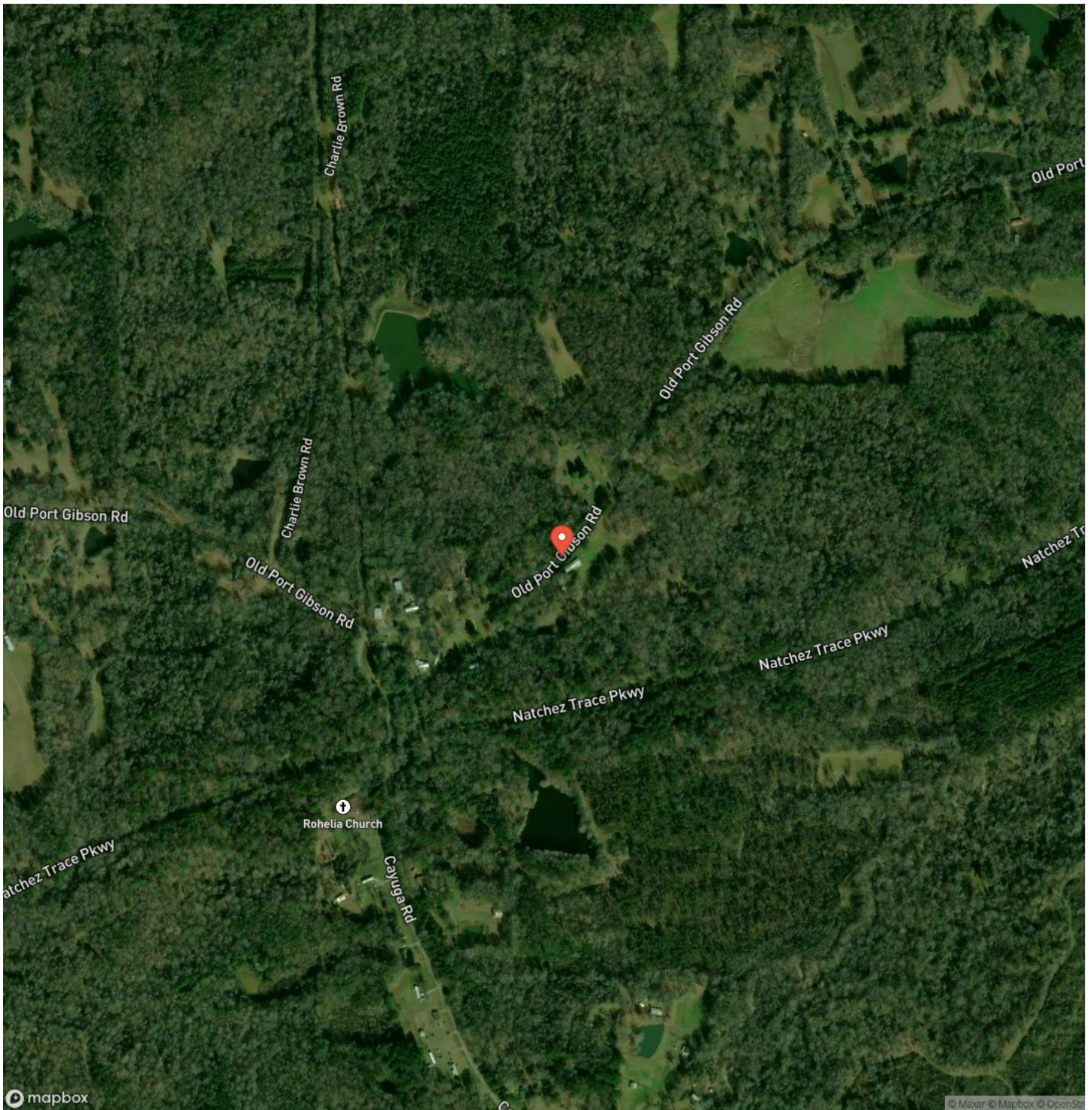
Locator Map



Locator Map



Satellite Map



DISCLAIMERS

Information in this brochure is provided solely for information purposes and does not constitute an offer to sell or advertise real estate outside the states in which broker or agent licensed. The information presented has been obtained from sources deemed to be reliable, but is not guaranteed or warranted by the agent, broker, or the sellers of these properties. This offering is subject to errors, omissions, prior sale, price change, correction or withdrawal from the market without notice. All references to age, square footage, income, expenses, acreage, carrying capacity, and land classification, etc. are approximate. Prospective buyers are chargeable with and expected to conduct their own independent investigation of the information and the property and to rely only on those results. Sellers reserve the right to accept or reject any and all offers without liability to any buyer or cooperating broker.

Maps are provided for illustration purposes only, the accuracy is not warranted. Parcels on interactive maps are not adjusted to match aerial backgrounds. This information is for reference purposes only and is not a legal document. Data maps contain errors. The seller and seller's agent are making known to all potential buyers that there may be variations between the location of the existing fence lines and the legal description of the deeded property. Seller and seller's agent make no warranties with regard to the location of the fence lines in relationship to the deeded property lines, nor does the Seller make any warranties or representations with regard to the specific acreage contained within the fenced property lines. Seller is selling the property in an "as is" condition, which includes the location of the fences as they exist. Boundaries shown on the accompanying maps are approximate, based on county parcel data. The maps are not to scale. The accuracy of the maps is not guaranteed. Prospective buyers are encouraged to verify fence lines, deeded property lines and acreages using a licensed surveyor at their own expense.

Mossy Oak Properties Posey Land Company
105 W Chickasaw St Suite C
Brookhaven, MS 39601
(601) 597-9378
<https://www.mossoakproperties.com/>
