

15+/- acres with a beautiful view of the saline river. 500 ft  
of river frontage  
0000 Steel Bridge Rd  
Benton, AR 72019

**\$300,000**  
15± Acres  
Saline County





**15+/- acres with a beautiful view of the saline river. 500 ft of river frontage**  
**Benton, AR / Saline County**

---

**SUMMARY**

**Address**

0000 Steel Bridge Rd

**City, State Zip**

Benton, AR 72019

**County**

Saline County

**Type**

Riverfront, Hunting Land, Recreational Land

**Latitude / Longitude**

34.6608324 / -92.6386368

**Taxes (Annually)**

34

**Acreage**

15

**Price**

\$300,000

**Property Website**

<https://arkansaslandforsale.com/property/15-acres-with-a-beautiful-view-of-the-saline-river-500-ft-of-river-frontage-saline-arkansas/34504/>



**15+/- acres with a beautiful view of the saline river. 500 ft of river frontage**  
**Benton, AR / Saline County**

---

**PROPERTY DESCRIPTION**

Located in Saline County, just 8 miles outside of Benton lies this 15+/- acre tract. This parcel contains 500 ft of river frontage on the Northfork Saline River. The property is split into two different parcels. One being the five acres with direct access to the saline river and the other being 10 acres of high ground with an unbelievable view looking out over the river. The property on the high side of the road has several great building spots which is rare for anywhere on this river. As far as utilities, the property has city water and electricity. If you are looking for a place to live with plenty of seclusion, river access, and a great view then look no further! For more information or if you would like to schedule a showing, please call listing agent Dustin Reid at [870-917-4054](tel:870-917-4054).





15+/- acres with a beautiful view of the saline river. 500 ft of river frontage  
Benton, AR / Saline County

---



15+/- acres with a beautiful view of the saline river. 500 ft of river frontage  
Benton, AR / Saline County

---

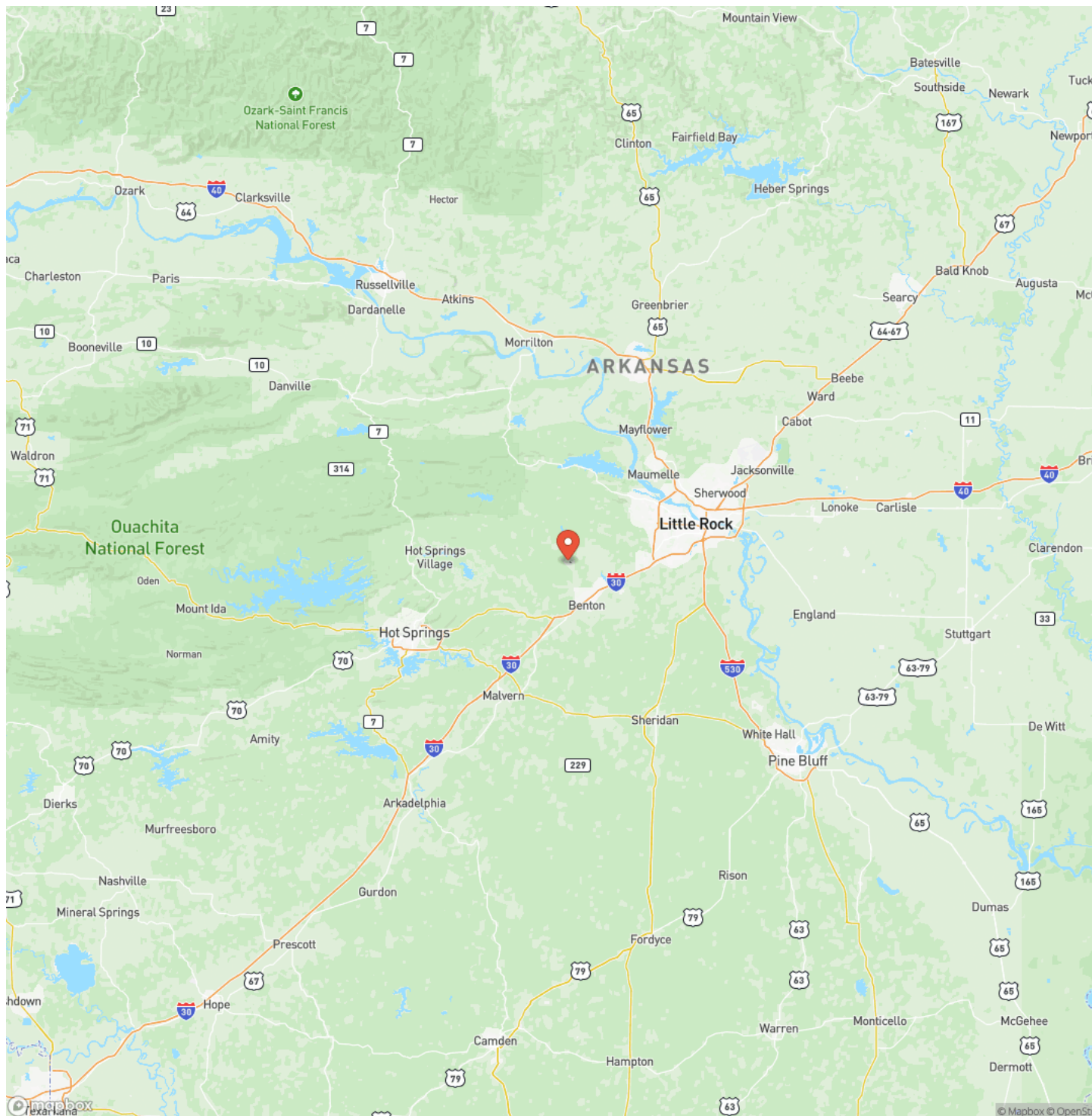
## Locator Map





15+/- acres with a beautiful view of the saline river. 500 ft of river frontage  
Benton, AR / Saline County

## Locator Map

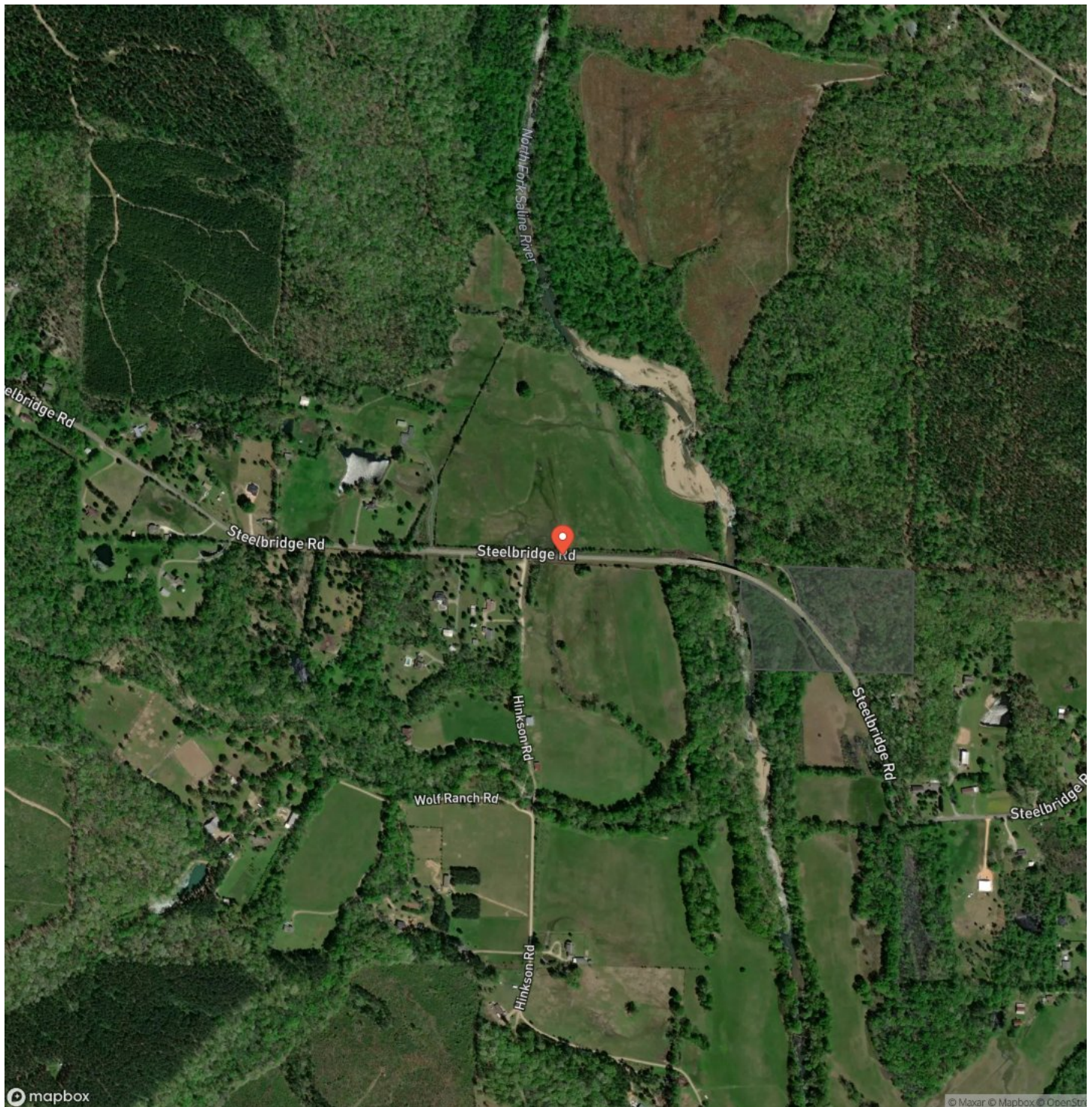




15+/- acres with a beautiful view of the saline river. 500 ft of river frontage  
Benton, AR / Saline County

---

## Satellite Map



**15+/- acres with a beautiful view of the saline river. 500 ft of river frontage  
Benton, AR / Saline County**

## LISTING REPRESENTATIVE

**For more information contact:**



## Representative

Dustin Reid

## Mobile

(870) 917-4054

## Office

(501) 604-4565

## Email

dreid@mossyoakproperties.com

**Address**

2024 North Main Street

## City / State / Zip

N Little Rock, AR 72114

## NOTES



**MORE INFO ONLINE:**

**ArkansasLandForSale.com**



## This image shows a blank sheet of white paper with horizontal ruling lines. The lines are evenly spaced and run across the width of the page. There are no margins, text, or other markings on the paper.



## **DISCLAIMERS**

Information in this brochure is provided solely for information purposes and does not constitute an offer to sell or advertise real estate outside the states in which broker or agent licensed. The information presented has been obtained from sources deemed to be reliable, is not guaranteed or warranted by the agent, broker, or the sellers of these properties. This offering is subject to errors, omissions, prior sale, price change, correction or withdrawal from the market without notice. All references to age, square footage, income, expenses, acreage, carrying capacity, and land classification, etc. are approximate. Prospective buyers are chargeable with and expected to conduct their own independent investigation of the information and the property and to rely only on those results. Sellers reserve the right to accept or reject any and all offers without liability to any buyer or cooperating broker.

Maps are provided for illustration purposes only, the accuracy is not warranted. Parcels on interactive maps are not adjusted to match aerial backgrounds. This information is for reference purposes only and is not a legal document. Data maps contain errors. The seller and seller's agent are making known to all potential buyers that there may be variations between the location of the existing fence lines and the legal description of the deeded property. Seller and seller's agent make no warranties with regard to the location of the fence lines in relation to the deeded property lines, nor does the Seller make any warranties or representations with regard to the specific acreage contained within the fenced property lines. Seller is selling the property in an "as is" condition, which includes the location of the fences as they exist. Boundaries shown on the accompanying maps are approximate, based on county parcel data. The maps are not to scale. The accuracy of the maps is not guaranteed. Prospective buyers are encouraged to verify fence lines, deeded property lines and acreages using a licensed surveyor at their own expense.





---

**Mossy Oak Properties Delta Land Management Co. LLC**  
2024 North Main Street  
North Little Rock, AR 72114  
(501) 604-4565  
[ArkansasLandForSale.com](http://ArkansasLandForSale.com)

---

