

40 +/- Acres, Mountain View, Stone Co, AR
Turkey Creek Rd
Mountain View, AR 72560

\$79,900
40± Acres
Stone County



40 +/- Acres, Mountain View, Stone Co, AR
Mountain View, AR / Stone County

SUMMARY

Address

Turkey Creek Rd

City, State Zip

Mountain View, AR 72560

County

Stone County

Type

Hunting Land, Recreational Land, Residential
Property, Timberland

Latitude / Longitude

35.7613543 / -92.1909137

Taxes (Annually)

31

Acreage

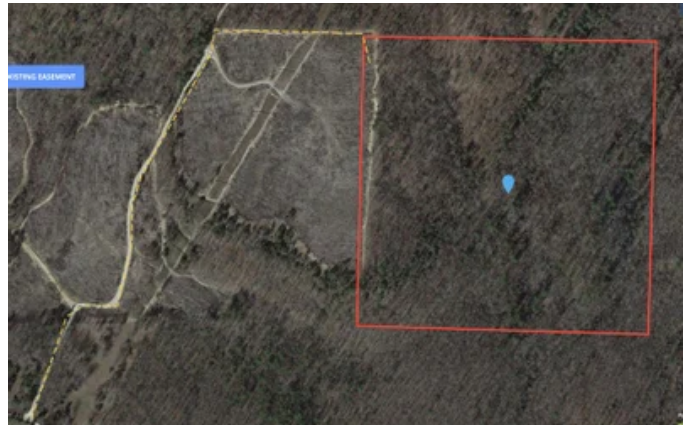
40

Price

\$79,900

Property Website

<https://www.mossyoakproperties.com/property/40-acres-mountain-view-stone-co-ar-stone-arkansas/28261/>



40 +/- Acres, Mountain View, Stone Co, AR
Mountain View, AR / Stone County

PROPERTY DESCRIPTION

HUNTERS!!! Great piece for hunting or maybe building that forever home/cabin. Wooded with some places for a food plot! This property is not far from Mountain View and is close to the White River.

There is a legal easement to the property! Owner will consider Owner Financing!! Listed with Mossy Oak Properties Strawberry River & Home [870-495-2123](tel:870-495-2123). Listing agent Brayden Welch, [870-217-6727](tel:870-217-6727). Equal Housing Opportunity. Call us today to set up a time to view this property. www.ArkansasLandAndHomes.us



MOSSY OAK.
PROPERTIES
Strawberry River Land & Homes
America's Land Specialist

40 +/- Acres, Mountain View, Stone Co, AR
Mountain View, AR / Stone County



40 +/- Acres, Mountain View, Stone Co, AR
Mountain View, AR / Stone County

Locator Maps



40 +/- Acres, Mountain View, Stone Co, AR
Mountain View, AR / Stone County

Aerial Maps



40 +/- Acres, Mountain View, Stone Co, AR
Mountain View, AR / Stone County

LISTING REPRESENTATIVE

For more information contact:



Representative

Brayden Welch

Mobile

(870) 217-6727

Office

(870) 495-2123

Email

bwelch@mossyoakproperties.com

Address

520 N Main

City / State / Zip

Cave City, AR 72521

NOTES



NOTES

[illegible]

DISCLAIMERS

Information in this brochure is provided solely for information purposes and does not constitute an offer to sell or advertise real estate outside the states in which broker or agent licensed. The information presented has been obtained from sources deemed to be reliable, but is not guaranteed or warranted by the agent, broker, or the sellers of these properties. This offering is subject to errors, omissions, prior sale, price change, correction or withdrawal from the market without notice. All references to age, square footage, income, expenses, acreage, carrying capacity, and land classification, etc. are approximate. Prospective buyers are chargeable with and expected to conduct their own independent investigation of the information and the property and to rely only on those results. Sellers reserve the right to accept or reject any and all offers without liability to any buyer or cooperating broker.

Maps are provided for illustration purposes only, the accuracy is not warranted. Parcels on interactive maps are not adjusted to match aerial backgrounds. This information is for reference purposes only and is not a legal document. Data maps contain errors. The seller and seller's agent are making known to all potential buyers that there may be variations between the location of the existing fence lines and the legal description of the deeded property. Seller and seller's agent make no warranties with regard to the location of the fence lines in relationship to the deeded property lines, nor does the Seller make any warranties or representations with regard to the specific acreage contained within the fenced property lines. Seller is selling the property in an "as is" condition, which includes the location of the fences as they exist. Boundaries shown on the accompanying maps are approximate, based on county parcel data. The maps are not to scale. The accuracy of the maps is not guaranteed. Prospective buyers are encouraged to verify fence lines, deeded property lines and acreages using a licensed surveyor at their own expense.



Mossy Oak Properties Strawberry River Land and Homes

520 N Main

Cave City, AR 72521

(870) 495-2123

MossyOakProperties.com



MORE INFO ONLINE:

MossyOakProperties.com