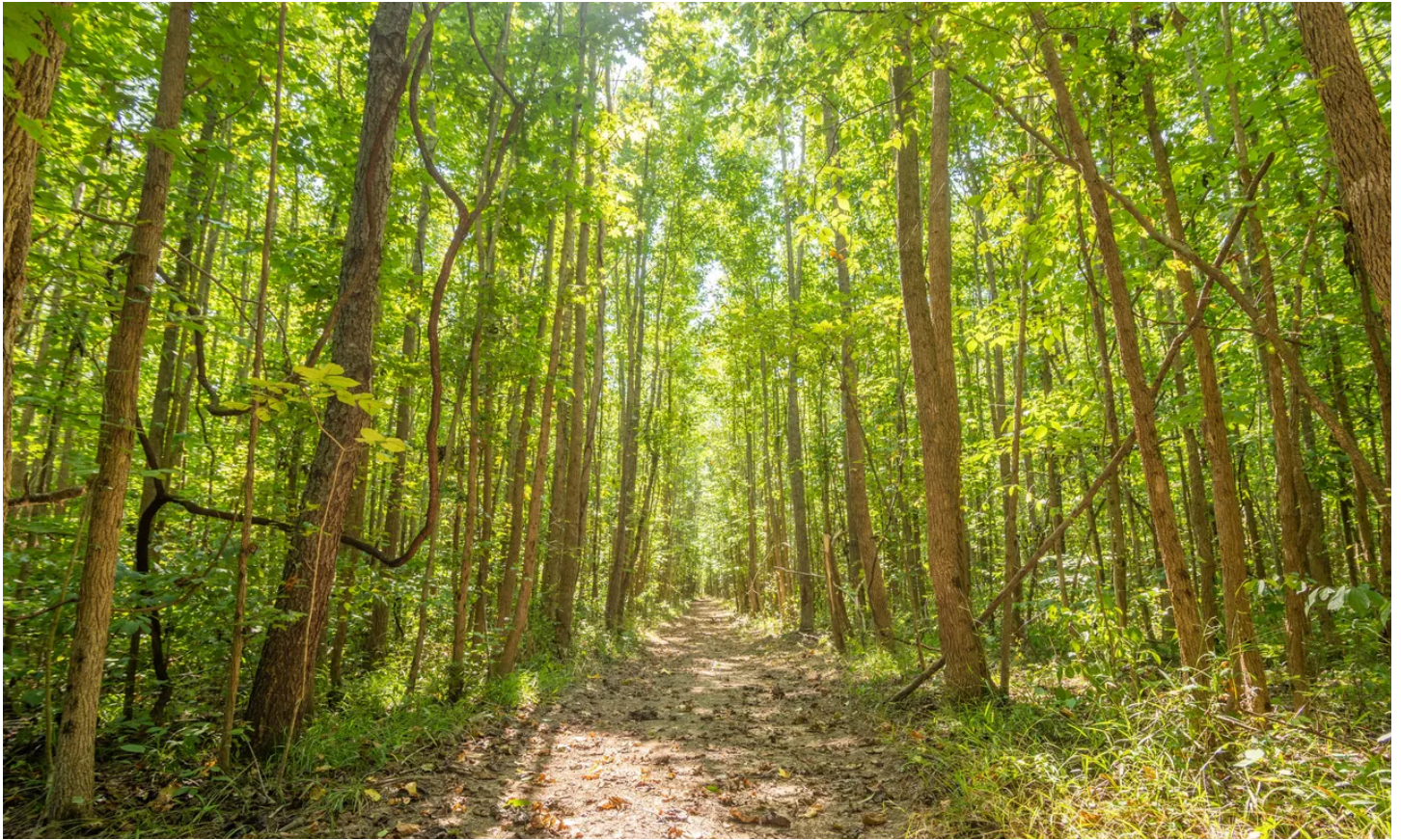


33+/- Acres For Sale in Stoddard Co.  
Missouri 25  
Bell City, MO 63825

**\$195,000**  
33.110± Acres  
Stoddard County



**33+/- Acres For Sale in Stoddard Co.  
Bell City, MO / Stoddard County**

---

**SUMMARY**

**Address**

Missouri 25

**City, State Zip**

Bell City, MO 63825

**County**

Stoddard County

**Type**

Commercial, Horse Property, Hunting Land, Recreational Land,  
Business Opportunity

**Latitude / Longitude**

36.882417 / -89.924927

**Acreage**

33.110

**Price**

\$195,000

**Property Website**

<https://www.mossyoakproperties.com/property/33-acres-for-sale-in-stoddard-co-stoddard-missouri/61650/>



**MORE INFO ONLINE:**

**MossyOakProperties.com**

**33+/- Acres For Sale in Stoddard Co.  
Bell City, MO / Stoddard County**

---

**PROPERTY DESCRIPTION**

This 32-acre property is a nature lover's paradise, fully wooded with established trails and abundant wildlife, including whitetail deer and turkey. A wet weather creek runs through the tract, adding to its natural beauty, while a recently planted food plot with clover and turnips enhances its appeal as a hunting retreat. With frontage on Highway 25, this land offers easy access and multiple possibilities, from a private residence to future development. The varied terrain provides potential building sites, and the property's natural resources make it perfect for sustainable land management. This property offers a rare blend of seclusion, accessibility, and versatility.



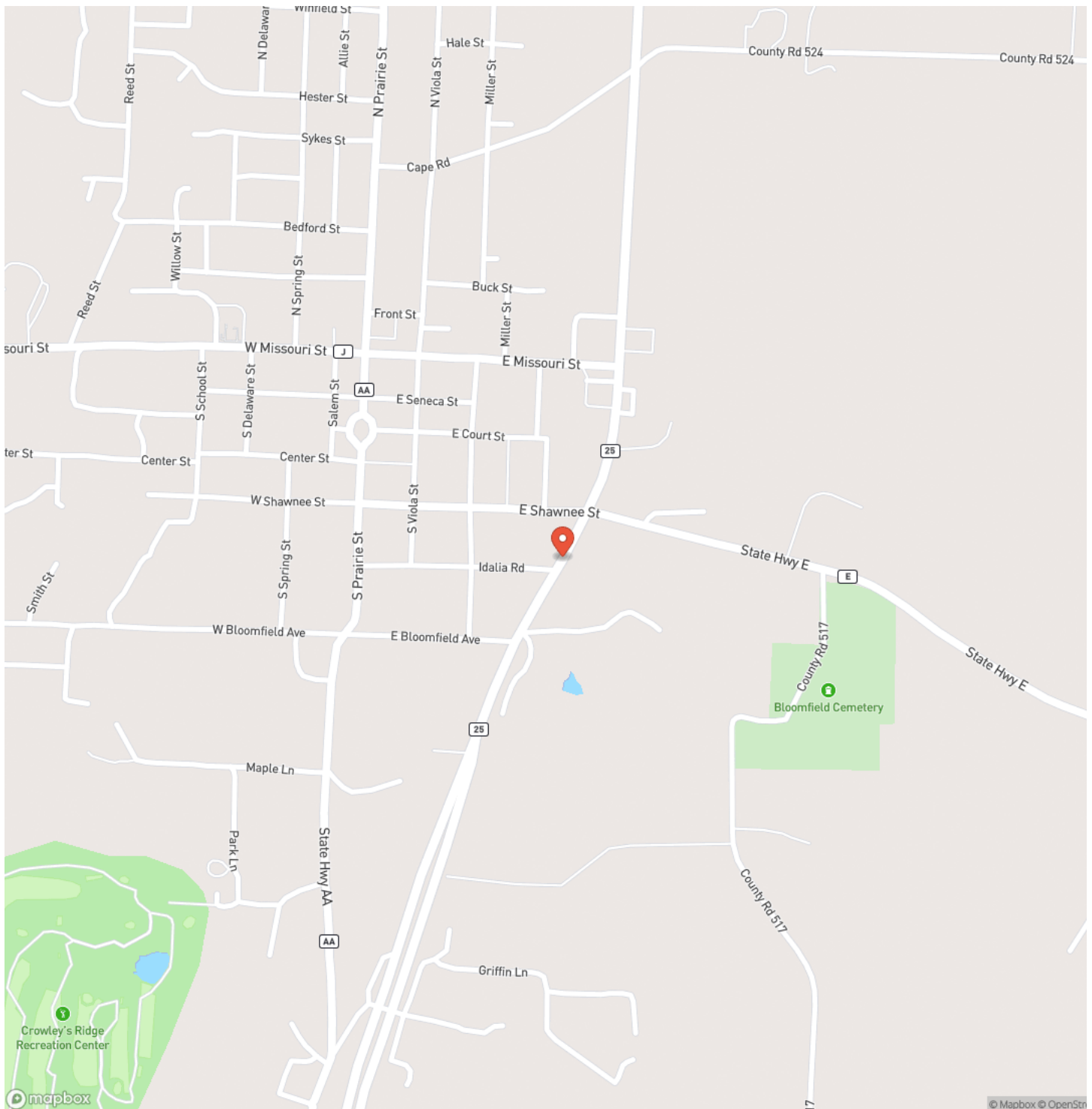
33+/- Acres For Sale in Stoddard Co.  
Bell City, MO / Stoddard County

---



## 33+/- Acres For Sale in Stoddard Co. Bell City, MO / Stoddard County

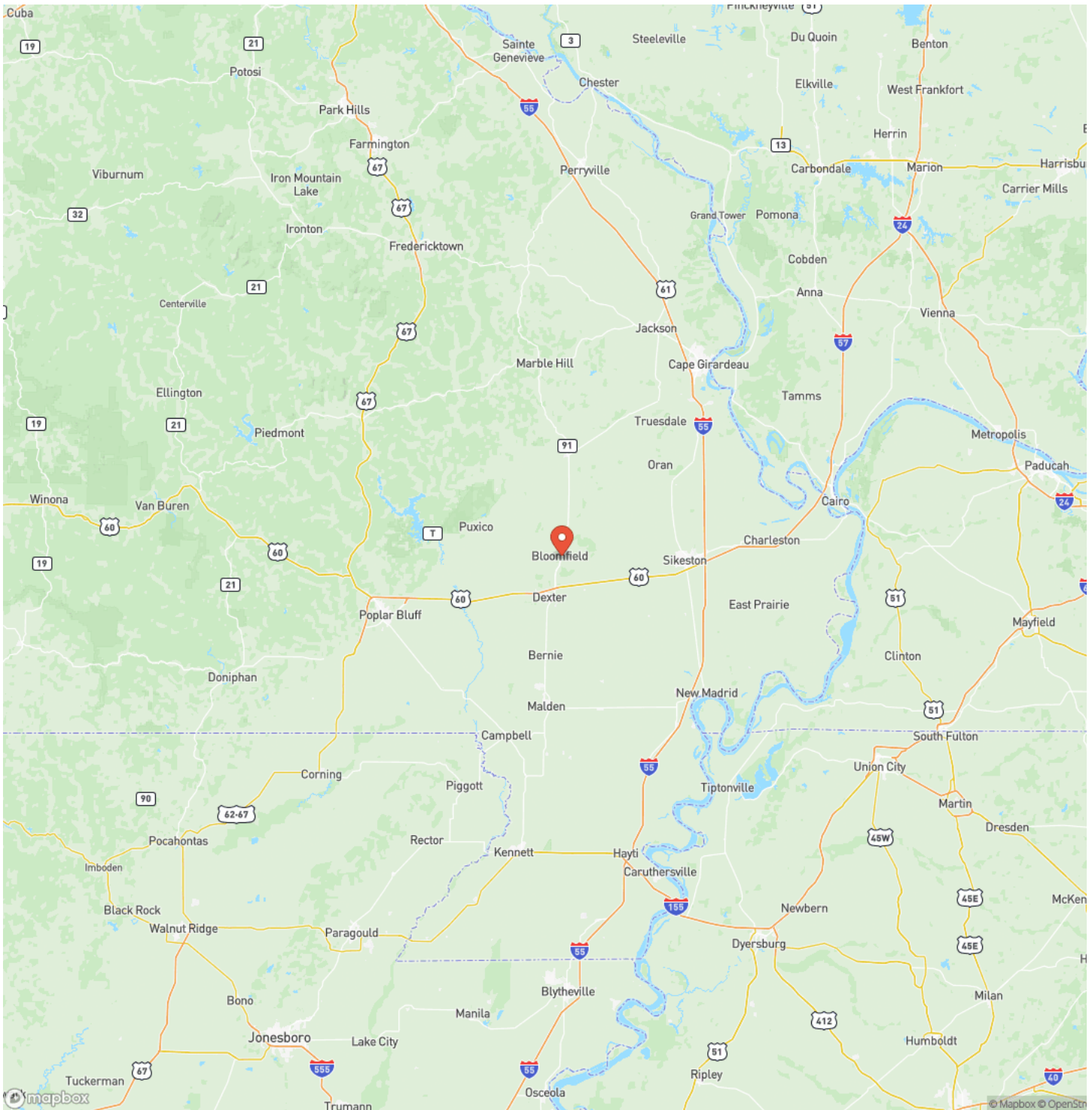
## Locator Map



**MORE INFO ONLINE:**

**MossyOakProperties.com**

## Locator Map

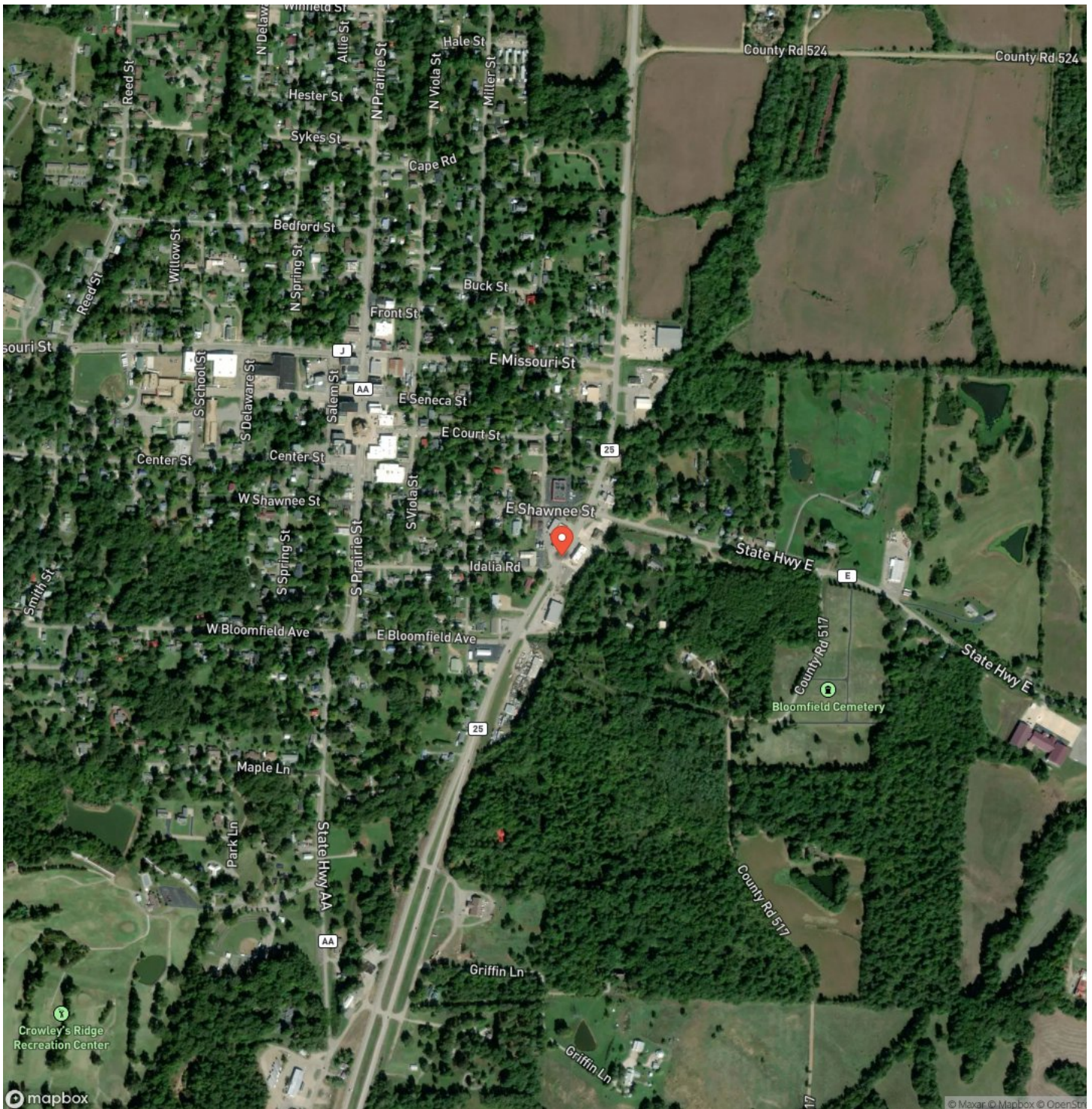


**MORE INFO ONLINE:**

**MossyOakProperties.com**

33+/- Acres For Sale in Stoddard Co.  
Bell City, MO / Stoddard County

## Satellite Map



**MORE INFO ONLINE:**

**MossyOakProperties.com**

## 33+/- Acres For Sale in Stoddard Co. Bell City, MO / Stoddard County

## LISTING REPRESENTATIVE

**For more information contact:**



### Representative

Paul Fox

## Mobile

(573) 421-8795

## Email

pfox@mossyoakproperties.com

**Address**

947 N Westwood Blvd

## City / State / Zip

Poplar Bluff, MO 63901

## NOTES



**MORE INFO ONLINE:**

**MossyOakProperties.com**

## This image shows a blank sheet of white paper with horizontal ruling lines. The lines are evenly spaced and run across the width of the page. There are no margins, text, or other markings on the paper.



## **DISCLAIMERS**

Information in this brochure is provided solely for information purposes and does not constitute an offer to sell or advertise real estate outside the states in which broker or agent licensed. The information presented has been obtained from sources deemed to be reliable, but is not guaranteed or warranted by the agent, broker, or the sellers of these properties. This offering is subject to errors, omissions, prior sale, price change, correction or withdrawal from the market without notice. All references to age, square footage, income, expenses, acreage, carrying capacity, and land classification, etc. are approximate. Prospective buyers are chargeable with and expected to conduct their own independent investigation of the information and the property and to rely only on those results. Sellers reserve the right to accept or reject any and all offers without liability to any buyer or cooperating broker.

Maps are provided for illustration purposes only, the accuracy is not warranted. Parcels on interactive maps are not adjusted to match aerial backgrounds. This information is for reference purposes only and is not a legal document. Data maps contain errors. The seller and seller's agent are making known to all potential buyers that there may be variations between the location of the existing fence lines and the legal description of the deeded property. Seller and seller's agent make no warranties with regard to the location of the fence lines in relationship to the deeded property lines, nor does the Seller make any warranties or representations with regard to the specific acreage contained within the fenced property lines. Seller is selling the property in an "as is" condition, which includes the location of the fences as they exist. Boundaries shown on the accompanying maps are approximate, based on county parcel data. The maps are not to scale. The accuracy of the maps is not guaranteed. Prospective buyers are encouraged to verify fence lines, deeded property lines and acreages using a licensed surveyor at their own expense.



---

**Mossy Oak Properties Mozark Realty**  
947 N. Westwood Blvd.  
Poplar Bluff, MO 63901  
(573) 712-2252  
[MossyOakProperties.com](http://MossyOakProperties.com)

---

