

Cozy 2 Bed, 1 Bath Cottage in Bloomfield, Missouri
303 Idalia Road
Bloomfield, MO 63825

\$120,000
0.280± Acres
Stoddard County



MORE INFO ONLINE:

MossyOakProperties.com

Cozy 2 Bed, 1 Bath Cottage in Bloomfield, Missouri
Bloomfield, MO / Stoddard County

SUMMARY

Address

303 Idalia Road

City, State Zip

Bloomfield, MO 63825

County

Stoddard County

Type

Residential Property

Latitude / Longitude

36.885885 / -89.929257

Dwelling Square Feet

942

Bedrooms / Bathrooms

2 / 1

Acreage

0.280

Price

\$120,000

Property Website

<https://www.mossyoakproperties.com/property/cozy-2-bed-1-bath-cottage-in-bloomfield-missouri-stoddard-missouri/52123/>



MORE INFO ONLINE:

MossyOakProperties.com

Cozy 2 Bed, 1 Bath Cottage in Bloomfield, Missouri

Bloomfield, MO / Stoddard County

PROPERTY DESCRIPTION

Welcome this cozy 2 bed 1 bath cottage in Bloomfield, Missouri! Just shy of 1,000 square feet, you will instantly be welcomed into a spacious living area perfect for relaxing or entertaining guests. Custom cabinetry lines the kitchen with a pantry and custom coffee bar to keep you full and well caffeinated. Off the kitchen, you will find a dining room leading to the back doors of the home. When you open the doors, you will step onto the back deck, surrounded by the spacious, fenced-in back yard. This home comes with a well insulated workshop with electric. Located in the center of town, this home is close to the school, park, and grocery store. Easy access to highway 25 allows for easy trips to Dexter and Cape Girardeau. If you're ready to call Bloomfield home, schedule a showing today!



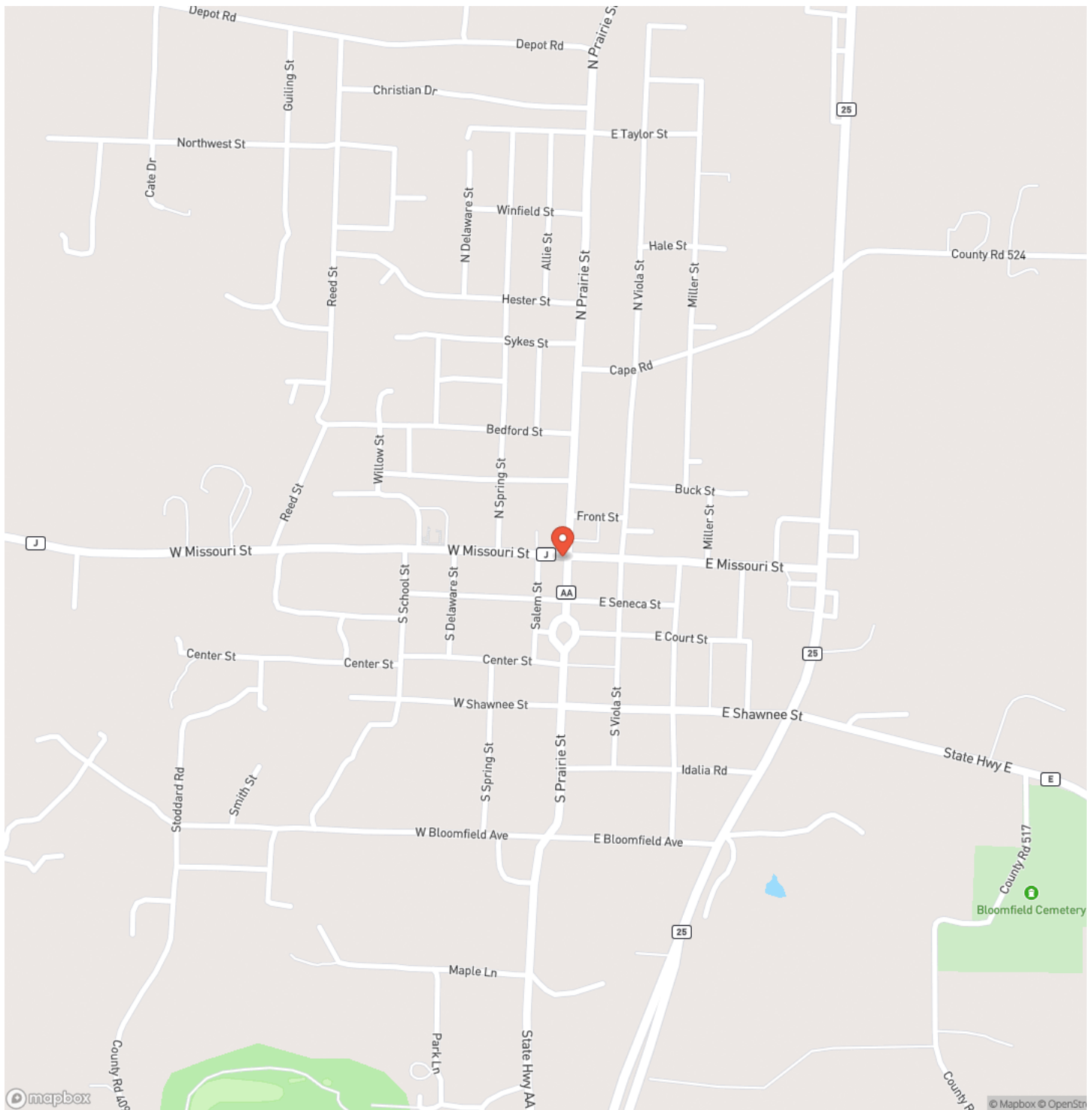
Cozy 2 Bed, 1 Bath Cottage in Bloomfield, Missouri
Bloomfield, MO / Stoddard County



MORE INFO ONLINE:

MossyOakProperties.com

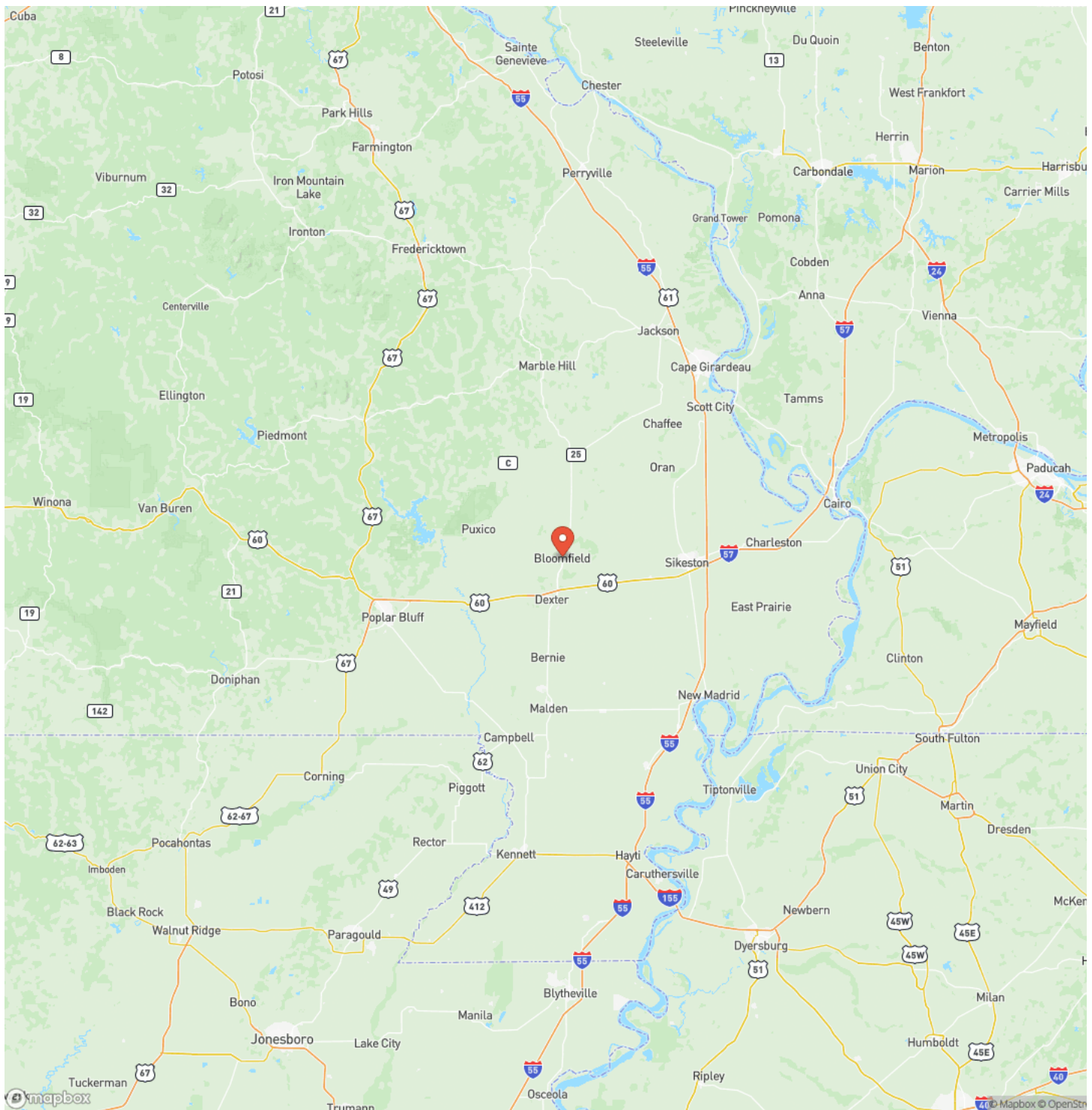
Locator Map



Cozy 2 Bed, 1 Bath Cottage in Bloomfield, Missouri

Bloomfield, MO / Stoddard County

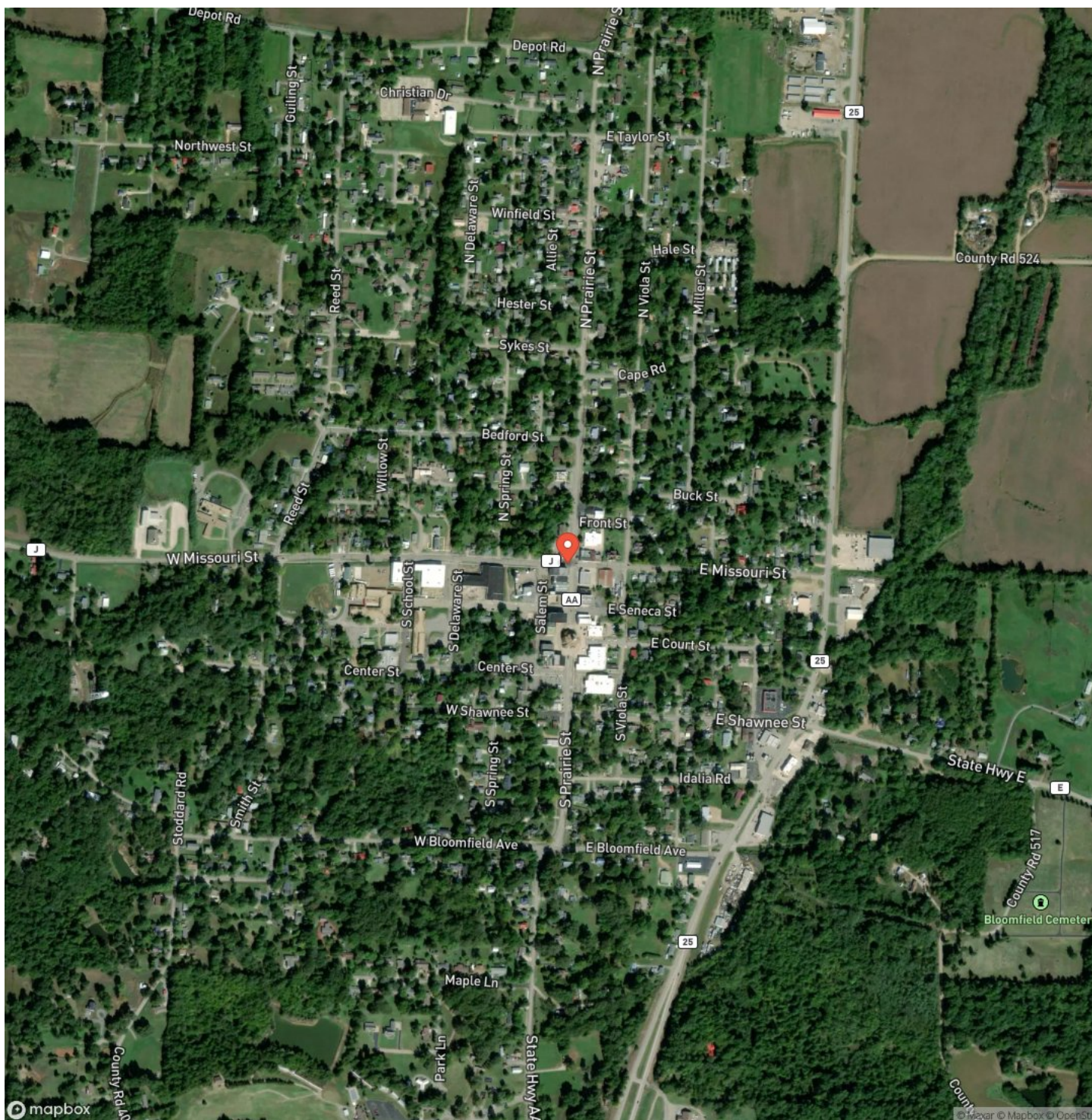
Locator Map



MORE INFO ONLINE:

MossyOakProperties.com

Satellite Map



MORE INFO ONLINE:

MossyOakProperties.com

Cozy 2 Bed, 1 Bath Cottage in Bloomfield, Missouri

LISTING REPRESENTATIVE

For more information contact:



Representative

Paul Fox

Mobile

(573) 421-8795

Email

pfox@mossyoakproperties.com

Address

947 N Westwood Blvd

City / State / Zip

Poplar Bluff, MO 63901

NOTES

This image shows a single sheet of white paper with horizontal ruling lines. The lines are evenly spaced and run across the width of the page. There are no margins or other markings on the paper.

MORE INFO ONLINE:

MossyOakProperties.com

[illegible]

DISCLAIMERS

Information in this brochure is provided solely for information purposes and does not constitute an offer to sell or advertise real estate outside the states in which broker or agent licensed. The information presented has been obtained from sources deemed to be reliable, but is not guaranteed or warranted by the agent, broker, or the sellers of these properties. This offering is subject to errors, omissions, prior sale, price change, correction or withdrawal from the market without notice. All references to age, square footage, income, expenses, acreage, carrying capacity, and land classification, etc. are approximate. Prospective buyers are chargeable with and expected to conduct their own independent investigation of the information and the property and to rely only on those results. Sellers reserve the right to accept or reject any and all offers without liability to any buyer or cooperating broker.

Maps are provided for illustration purposes only, the accuracy is not warranted. Parcels on interactive maps are not adjusted to match aerial backgrounds. This information is for reference purposes only and is not a legal document. Data maps contain errors. The seller and seller's agent are making known to all potential buyers that there may be variations between the location of the existing fence lines and the legal description of the deeded property. Seller and seller's agent make no warranties with regard to the location of the fence lines in relationship to the deeded property lines, nor does the Seller make any warranties or representations with regard to the specific acreage contained within the fenced property lines. Seller is selling the property in an "as is" condition, which includes the location of the fences as they exist. Boundaries shown on the accompanying maps are approximate, based on county parcel data. The maps are not to scale. The accuracy of the maps is not guaranteed. Prospective buyers are encouraged to verify fence lines, deeded property lines and acreages using a licensed surveyor at their own expense.



Mossy Oak Properties Mozark Realty
947 N. Westwood Blvd.
Poplar Bluff, MO 63901
(573) 712-2252
MossyOakProperties.com

