

Beautiful 25 +/- AC For Sale in Stoddard Co.
E Highway
Bloomfield, MO 63825

\$124,000
25± Acres
Stoddard County



**Beautiful 25 +/- AC For Sale in Stoddard Co.
Bloomfield, MO / Stoddard County**

SUMMARY

Address

E Highway

City, State Zip

Bloomfield, MO 63825

County

Stoddard County

Type

Farms, Horse Property, Recreational Land

Latitude / Longitude

36.883043 / -89.923571

Acreage

25

Price

\$124,000

Property Website

<https://www.mossyoakproperties.com/property/beautiful-25-ac-for-sale-in-stoddard-co-stoddard-missouri/97318/>

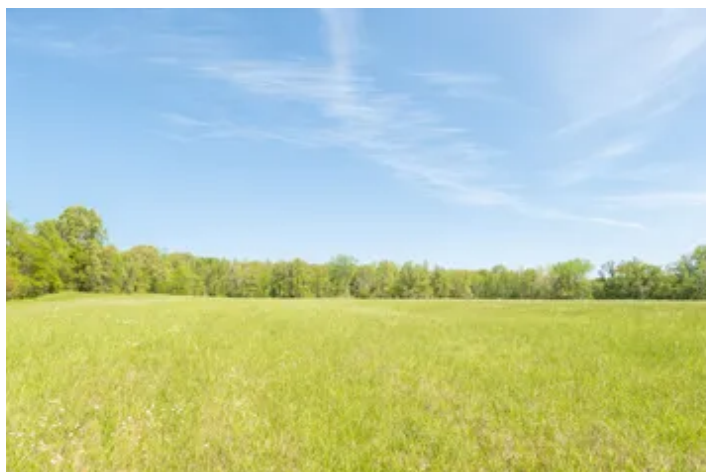
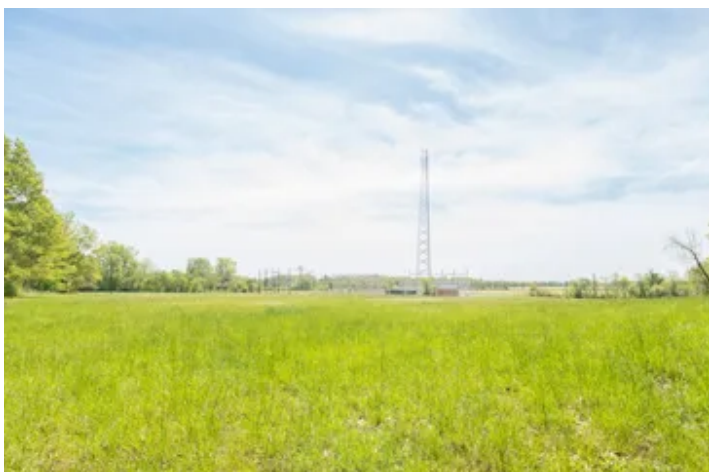
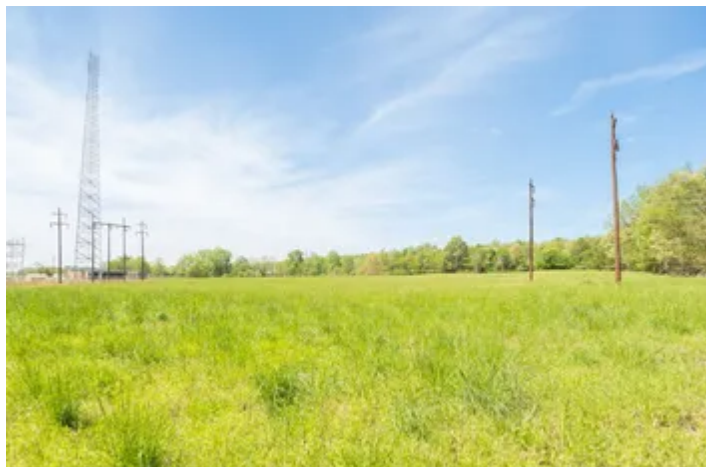


**Beautiful 25 +/- AC For Sale in Stoddard Co.
Bloomfield, MO / Stoddard County**

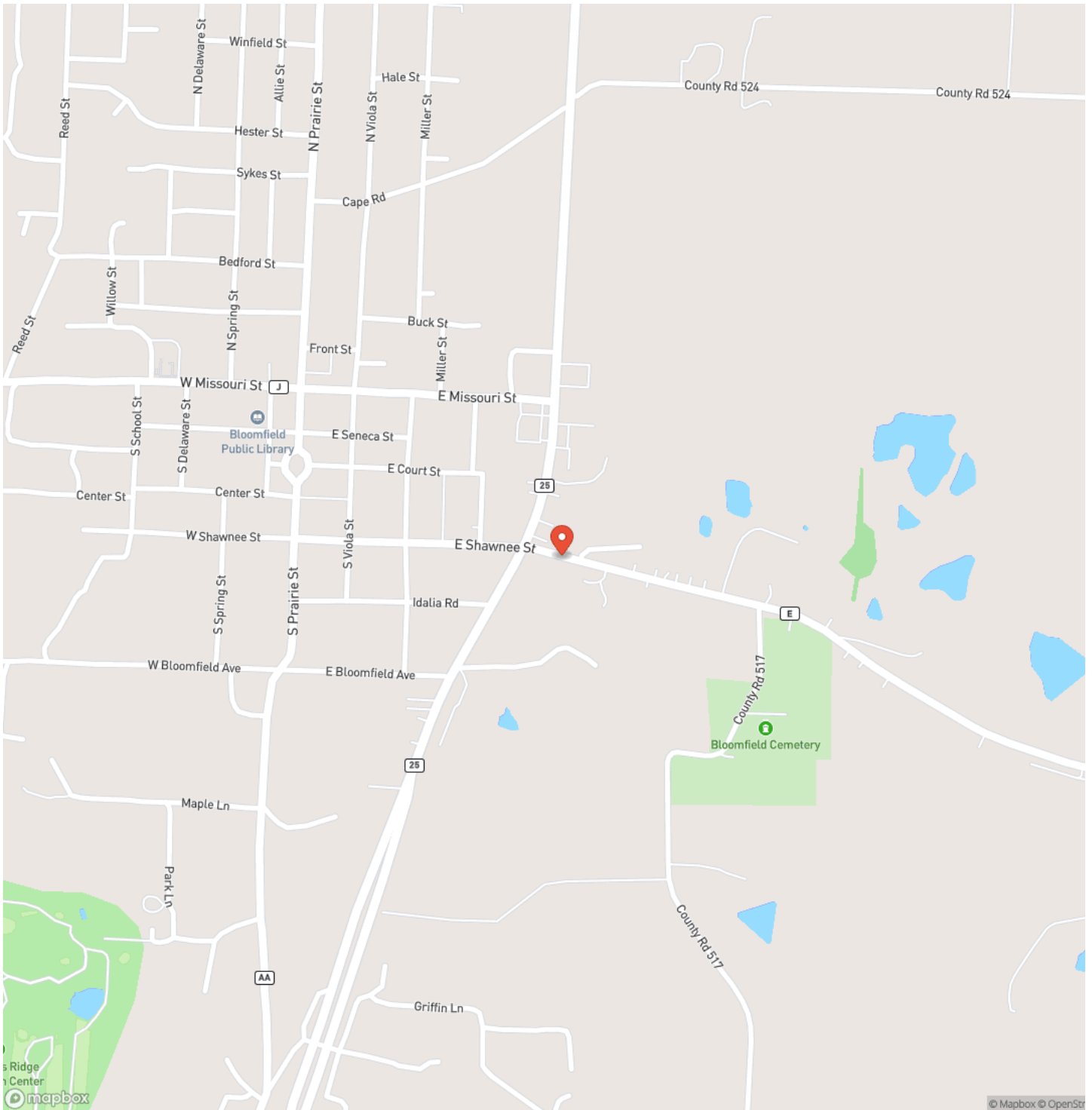
PROPERTY DESCRIPTION

Discover the allure of 25 +/- acres of prime real estate, situated just outside of Bloomfield, yet conveniently accessible from a paved road. This expansive parcel offers an array of possibilities, making it an enticing prospect for a variety of endeavors. For those yearning to build their primary residence, this parcel provides an unparalleled opportunity to design a custom home tailored to your every desire. Whether you envision a cozy cabin surrounded by nature's beauty or a modern retreat boasting panoramic views, the possibilities are limited only by your imagination. Investors keen on maximizing returns will recognize the inherent value of this versatile property. With its potential for development, the opportunity to capitalize on the growing demand for residential and commercial space is undeniable. Whether you're seeking a secluded escape, a canvas for development, or a wise investment, this parcel stands ready to fulfill your every aspiration.

**Beautiful 25 +/- AC For Sale in Stoddard Co.
Bloomfield, MO / Stoddard County**

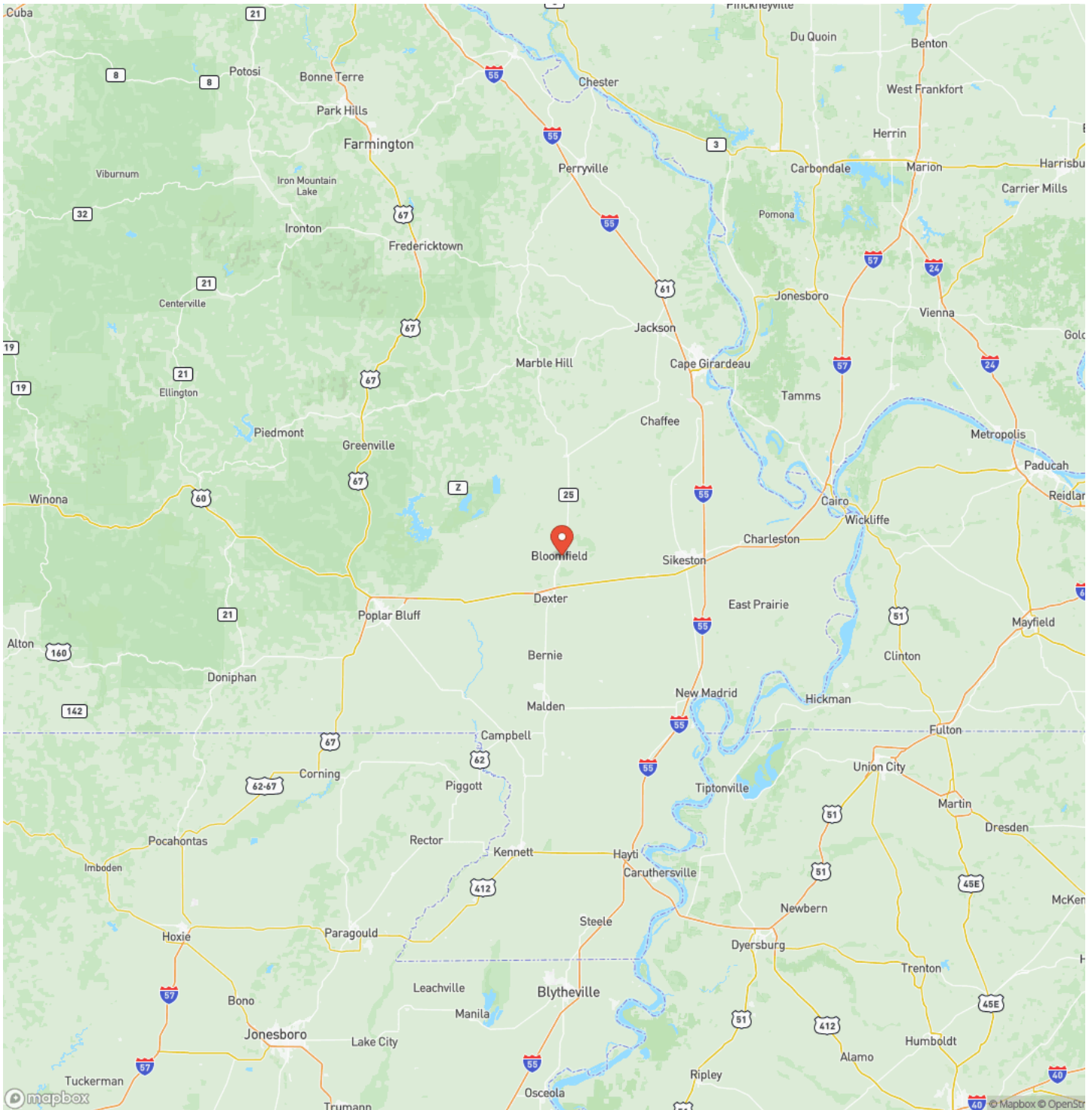


Locator Map



Bloomfield, MO / Stoddard County

Locator Map

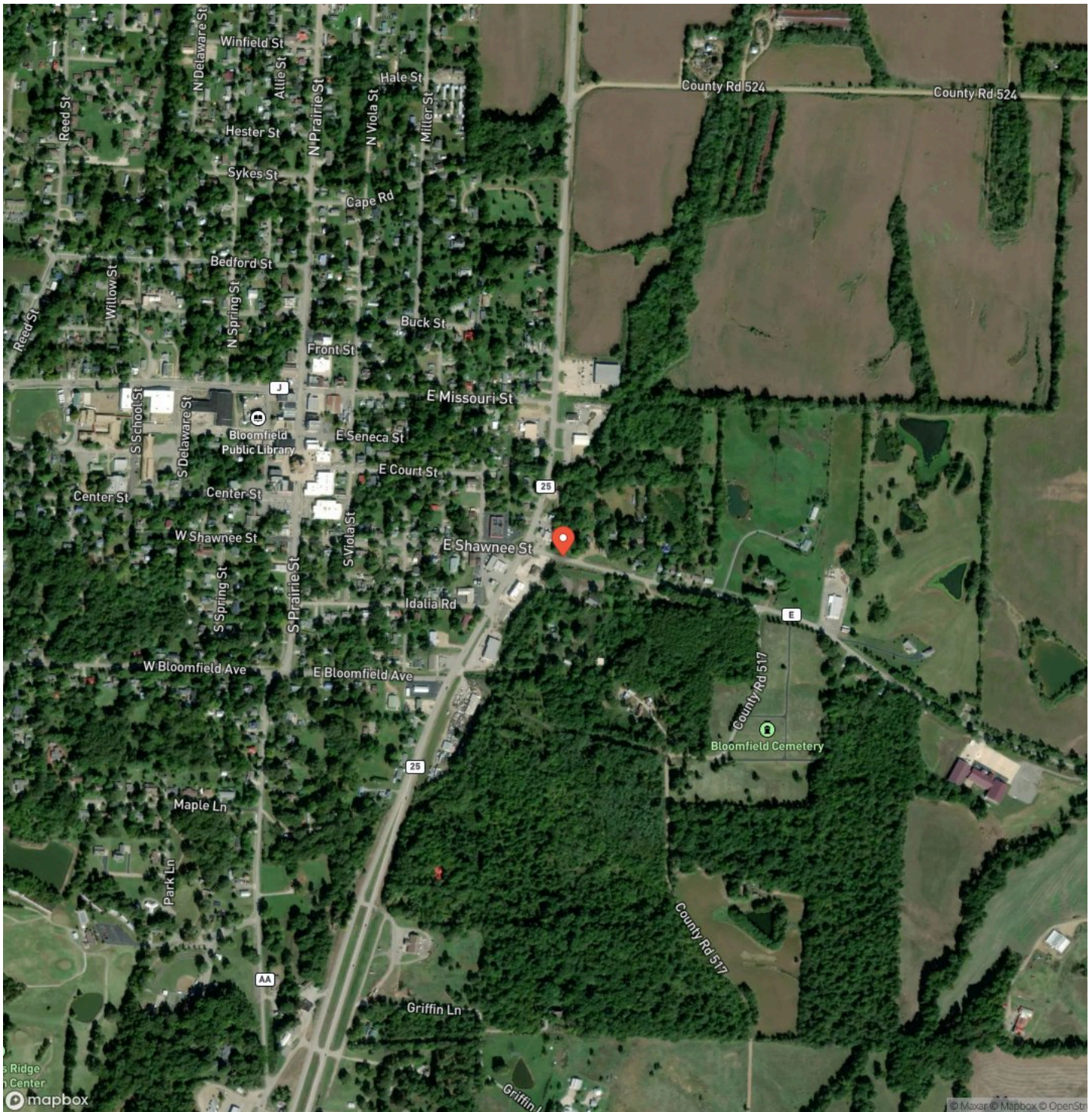


MORE INFO ONLINE:

MossyOakProperties.com

Beautiful 25 +/- AC For Sale in Stoddard Co.
Bloomfield, MO / Stoddard County

Satellite Map



Beautiful 25 +/- AC For Sale in Stoddard Co. Bloomfield, MO / Stoddard County

LISTING REPRESENTATIVE

For more information contact:



Representative

Paul Fox

Mobile

(573) 421-8795

Email

pfox@mossyoakproperties.com

Address

947 N Westwood Blvd

City / State / Zip

NOTES

[illegible]

This image shows a full page of blank white paper with horizontal ruling lines. The lines are evenly spaced and run across the width of the page, providing a template for writing or drawing. There are no margins, text, or other markings present.



MORE INFO ONLINE:
MossyOakProperties.com

DISCLAIMERS

Information in this brochure is provided solely for information purposes and does not constitute an offer to sell or advertise real estate outside the states in which broker or agent licensed. The information presented has been obtained from sources deemed to be reliable, but is not guaranteed or warranted by the agent, broker, or the sellers of these properties. This offering is subject to errors, omissions, prior sale, price change, correction or withdrawal from the market without notice. All references to age, square footage, income, expenses, acreage, carrying capacity, and land classification, etc. are approximate. Prospective buyers are chargeable with and expected to conduct their own independent investigation of the information and the property and to rely only on those results. Sellers reserve the right to accept or reject any and all offers without liability to any buyer or cooperating broker.

Maps are provided for illustration purposes only, the accuracy is not warranted. Parcels on interactive maps are not adjusted to match aerial backgrounds. This information is for reference purposes only and is not a legal document. Data maps contain errors. The seller and seller's agent are making known to all potential buyers that there may be variations between the location of the existing fence lines and the legal description of the deeded property. Seller and seller's agent make no warranties with regard to the location of the fence lines in relationship to the deeded property lines, nor does the Seller make any warranties or representations with regard to the specific acreage contained within the fenced property lines. Seller is selling the property in an "as is" condition, which includes the location of the fences as they exist. Boundaries shown on the accompanying maps are approximate, based on county parcel data. The maps are not to scale. The accuracy of the maps is not guaranteed. Prospective buyers are encouraged to verify fence lines, deeded property lines and acreages using a licensed surveyor at their own expense.

Mossy Oak Properties Mozark Realty
947 N. Westwood Blvd.
Poplar Bluff, MO 63901
(573) 712-2252
MossyOakProperties.com
