

Iconic 3200sqft Home on 2+/- AC For Sale in Bloomfield,  
MO  
707 South Prairie Street  
Bloomfield, MO 63825

**\$385,000**  
1.760± Acres  
Stoddard County



**Iconic 3200sqft Home on 2+/- AC For Sale in Bloomfield, MO**  
**Bloomfield, MO / Stoddard County**

**SUMMARY**

**Address**

707 South Prairie Street

**City, State Zip**

Bloomfield, MO 63825

**County**

Stoddard County

**Type**

Residential Property, Single Family

**Latitude / Longitude**

36.879973 / -89.929413

**Dwelling Square Feet**

3200

**Bedrooms / Bathrooms**

5 / 2

**Acreage**

1.760

**Price**

\$385,000

**Property Website**

<https://www.mossoakproperties.com/property/iconic-3200sqft-home-on-2-ac-for-sale-in-bloomfield-mo-stoddard-missouri/102244/>



## Iconic 3200sqft Home on 2+/- AC For Sale in Bloomfield, MO Bloomfield, MO / Stoddard County

---

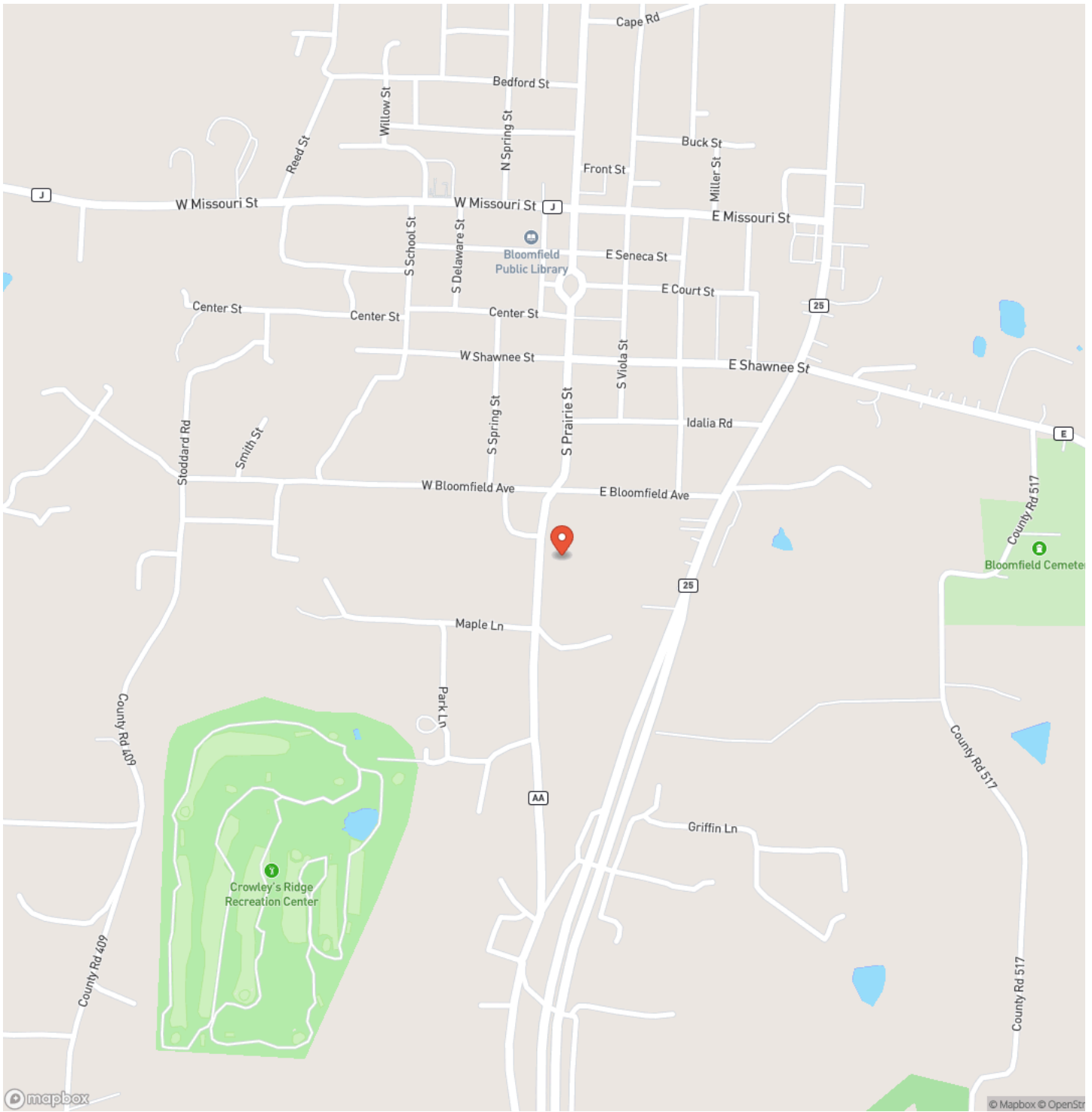
### **PROPERTY DESCRIPTION**

If you've spent any time in Bloomfield, chances are you've admired this iconic home from afar and now is your opportunity to make it your own. Rich in character and timeless charm, this historic property offers over 3,200 square feet of living space with 5 spacious bedrooms and 2.5 bathrooms, perfectly blending classic beauty with everyday functionality. Step outside and you'll immediately notice the incredible landscaping, featuring vibrant flowers, mature plants, and undeniable curb appeal that sets this home apart. Sitting on nearly 2 acres, there's plenty of room to relax and entertain. Whether you're hosting gatherings or enjoying quiet evenings, the composite deck under three covered porches provide the perfect setting year round. Inside, you'll find ample space for both living and storage, including a full basement that offers endless possibilities. The home's layout is ideal for entertaining guests while still maintaining a warm, inviting feel throughout. Located in a highly desirable area of Bloomfield, this property is just seconds from the local golf course and city park offering convenience without sacrificing privacy.

**Iconic 3200sqft Home on 2+/- AC For Sale in Bloomfield, MO**  
**Bloomfield, MO / Stoddard County**

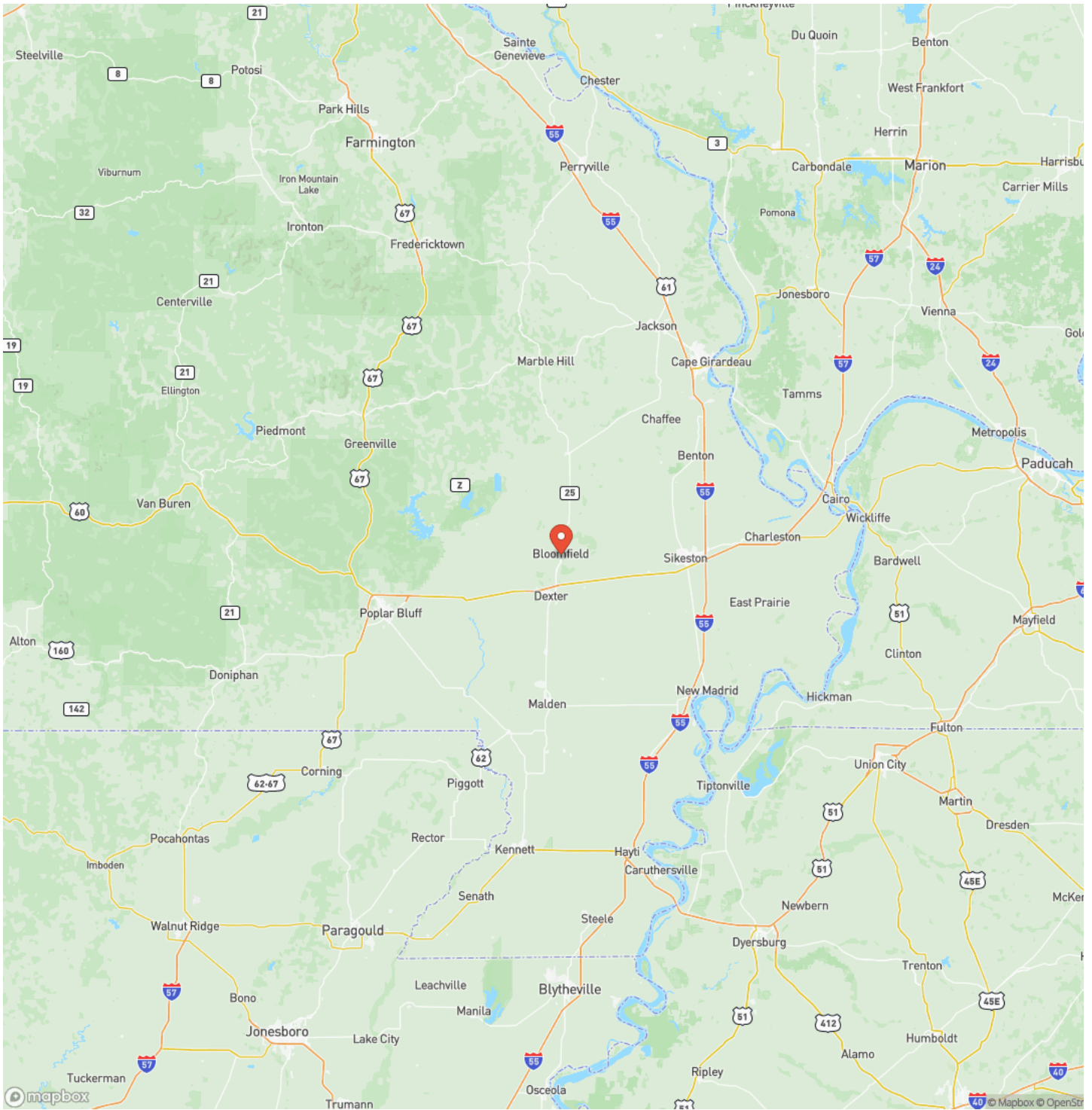


## Locator Map



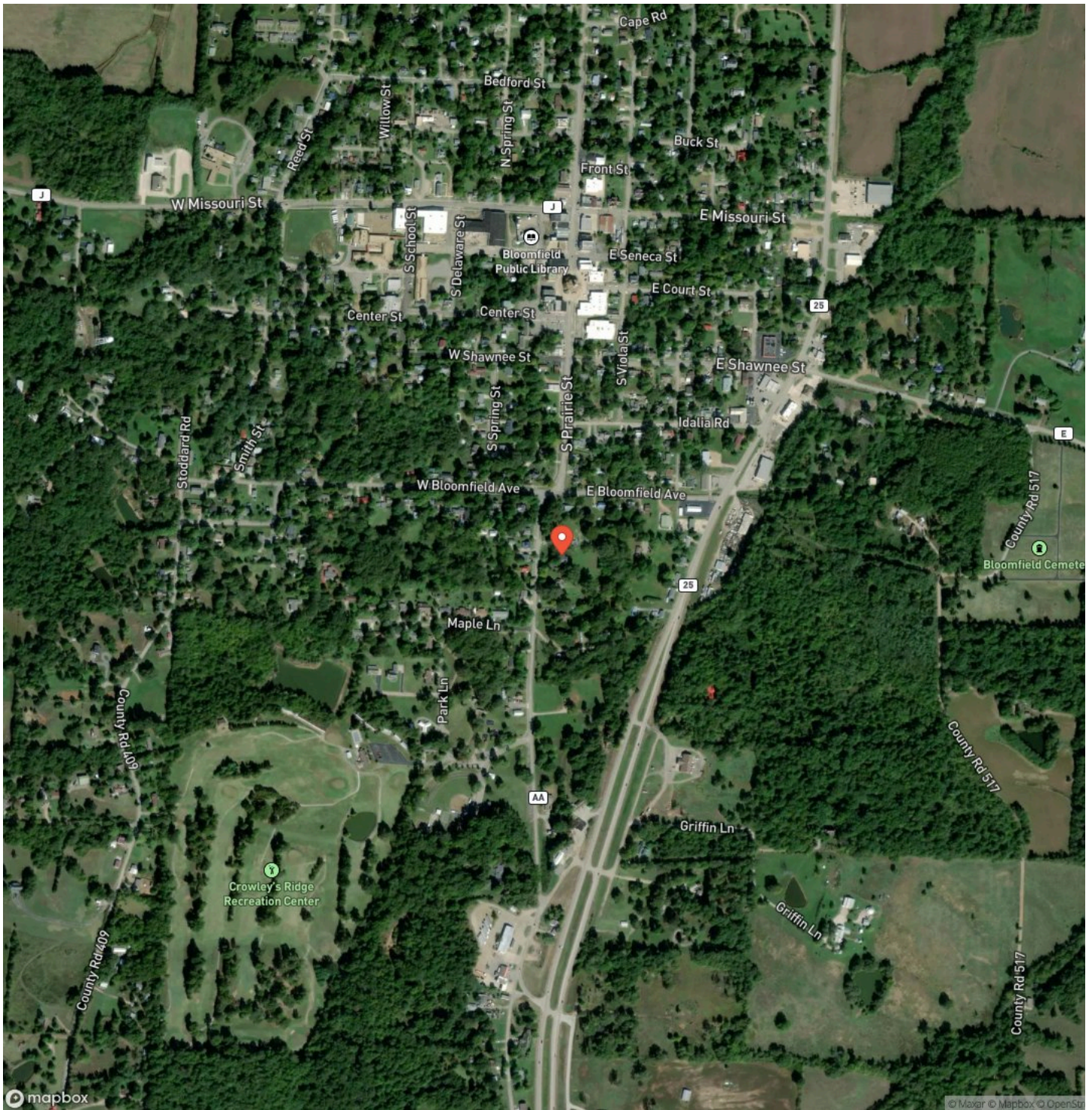
Iconic 3200sqft Home on 2+/- AC For Sale in Bloomfield, MO  
Bloomfield, MO / Stoddard County

## Locator Map



Iconic 3200sqft Home on 2+/- AC For Sale in Bloomfield, MO  
Bloomfield, MO / Stoddard County

## Satellite Map







## **DISCLAIMERS**

Information in this brochure is provided solely for information purposes and does not constitute an offer to sell or advertise real estate outside the states in which broker or agent licensed. The information presented has been obtained from sources deemed to be reliable, but is not guaranteed or warranted by the agent, broker, or the sellers of these properties. This offering is subject to errors, omissions, prior sale, price change, correction or withdrawal from the market without notice. All references to age, square footage, income, expenses, acreage, carrying capacity, and land classification, etc. are approximate. Prospective buyers are chargeable with and expected to conduct their own independent investigation of the information and the property and to rely only on those results. Sellers reserve the right to accept or reject any and all offers without liability to any buyer or cooperating broker.

Maps are provided for illustration purposes only, the accuracy is not warranted. Parcels on interactive maps are not adjusted to match aerial backgrounds. This information is for reference purposes only and is not a legal document. Data maps contain errors. The seller and seller's agent are making known to all potential buyers that there may be variations between the location of the existing fence lines and the legal description of the deeded property. Seller and seller's agent make no warranties with regard to the location of the fence lines in relationship to the deeded property lines, nor does the Seller make any warranties or representations with regard to the specific acreage contained within the fenced property lines. Seller is selling the property in an "as is" condition, which includes the location of the fences as they exist. Boundaries shown on the accompanying maps are approximate, based on county parcel data. The maps are not to scale. The accuracy of the maps is not guaranteed. Prospective buyers are encouraged to verify fence lines, deeded property lines and acreages using a licensed surveyor at their own expense.

---

**Mossy Oak Properties Mozark Realty**  
947 N. Westwood Blvd.  
Poplar Bluff, MO 63901  
(573) 712-2252  
<https://mossyoakproperties.com/>

---