

Beautiful Cozy Log Cabin For Sale in Essex, MO
23847 Friar Tuck Court
Essex, MO 63846

\$359,900
2.960± Acres
Stoddard County



Beautiful Cozy Log Cabin For Sale in Essex, MO

Essex, MO / Stoddard County

SUMMARY

Address

23847 Friar Tuck Court

City, State Zip

Essex, MO 63846

County

Stoddard County

Type

Residential Property, Single Family

Latitude / Longitude

36.911211 / -89.845406

Dwelling Square Feet

3612

Bedrooms / Bathrooms

3 / 2

Acreage

2.960

Price

\$359,900

Property Website

<https://www.mossyoakproperties.com/property/beautiful-cozy-log-cabin-for-sale-in-essex-mo-stoddard-missouri/90273/>



Beautiful Cozy Log Cabin For Sale in Essex, MO

Essex, MO / Stoddard County

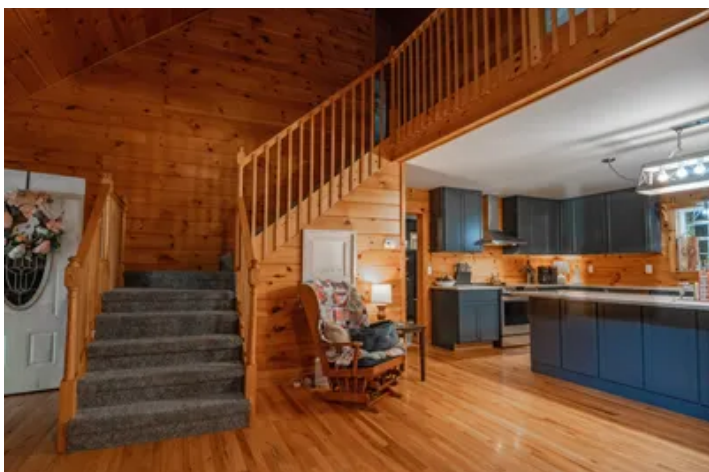
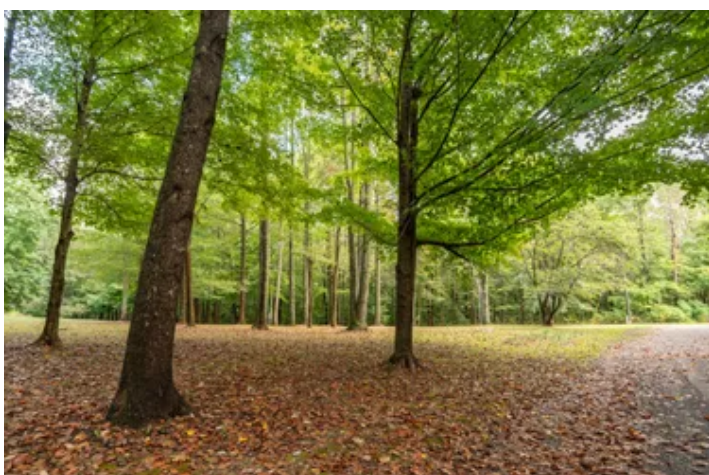
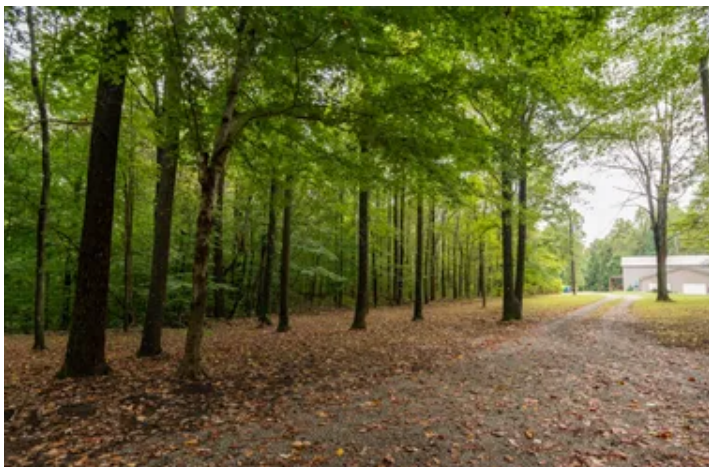
PROPERTY DESCRIPTION

Discover the charm of country living in this beautiful log cabin located in a quiet neighborhood in Essex, MO. Offering over 3,600 square feet of living space, this home features 3 bedrooms, 2 bathrooms, and a versatile bonus room that could serve as a fourth bedroom. A large loft area upstairs adds even more character and usable space.

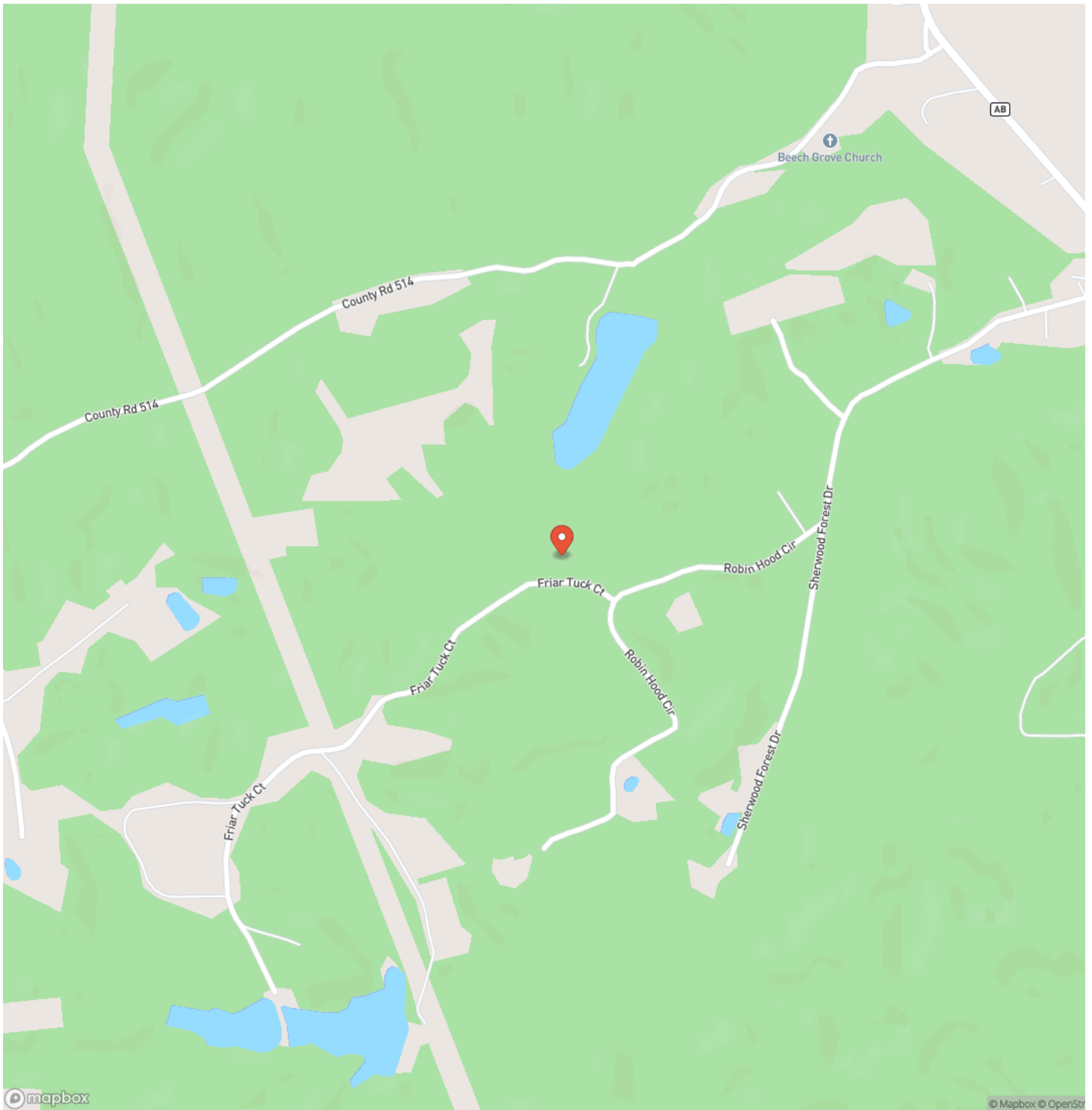
The heart of the home is the custom kitchen, complete with handcrafted cabinets and thoughtful finishes, perfect for both everyday living and entertaining. The full walk-out basement provides plenty of room for additional living space, a home gym, or storage - endless possibilities await.

Set on just under 3 acres, this property offers both privacy and space to enjoy the outdoors. With fiber internet available, you'll enjoy modern convenience while embracing the peaceful surroundings. Updated throughout and move-in ready, this cabin blends rustic charm with today's amenities.

Beautiful Cozy Log Cabin For Sale in Essex, MO
Essex, MO / Stoddard County

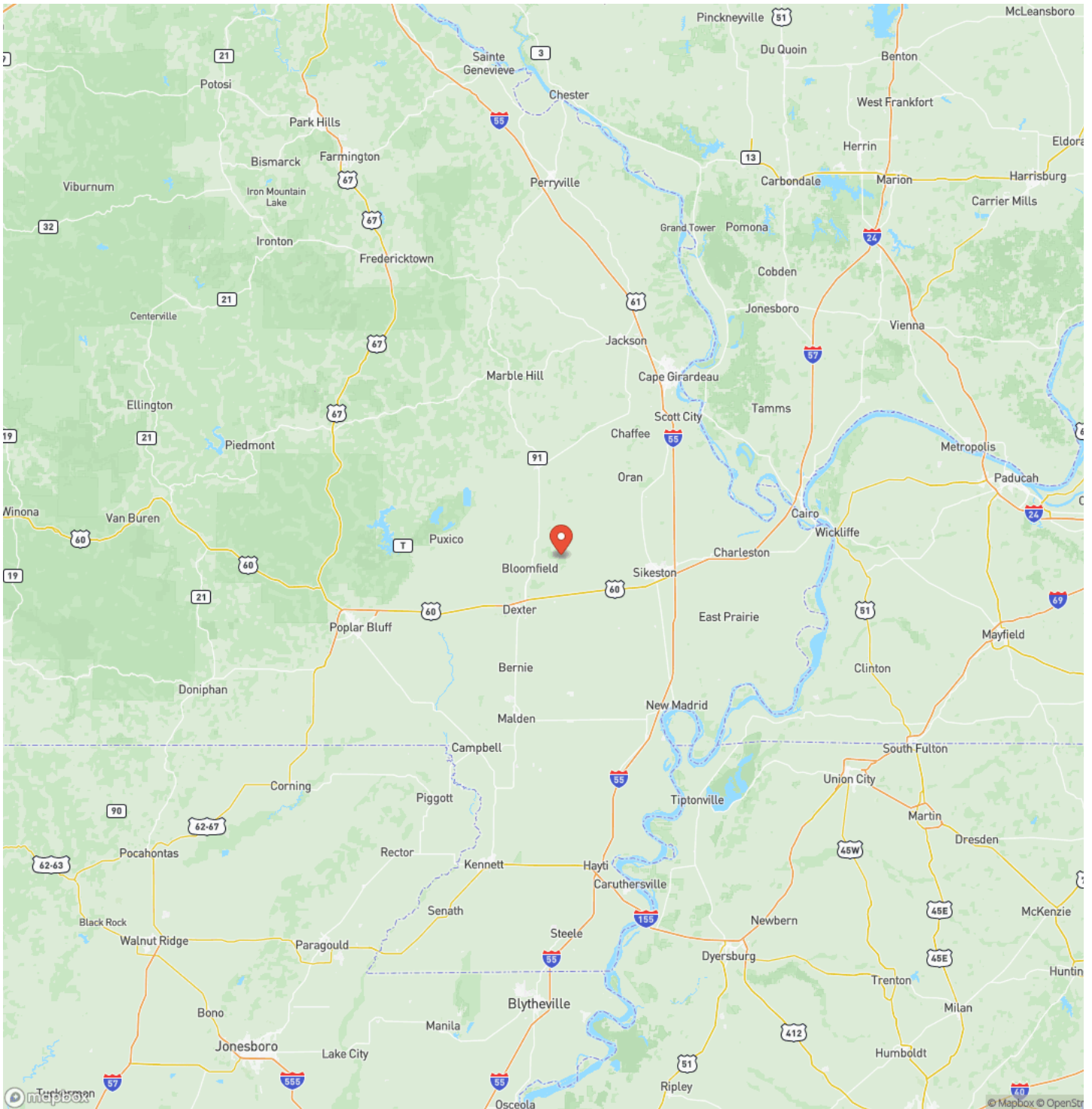


Locator Map

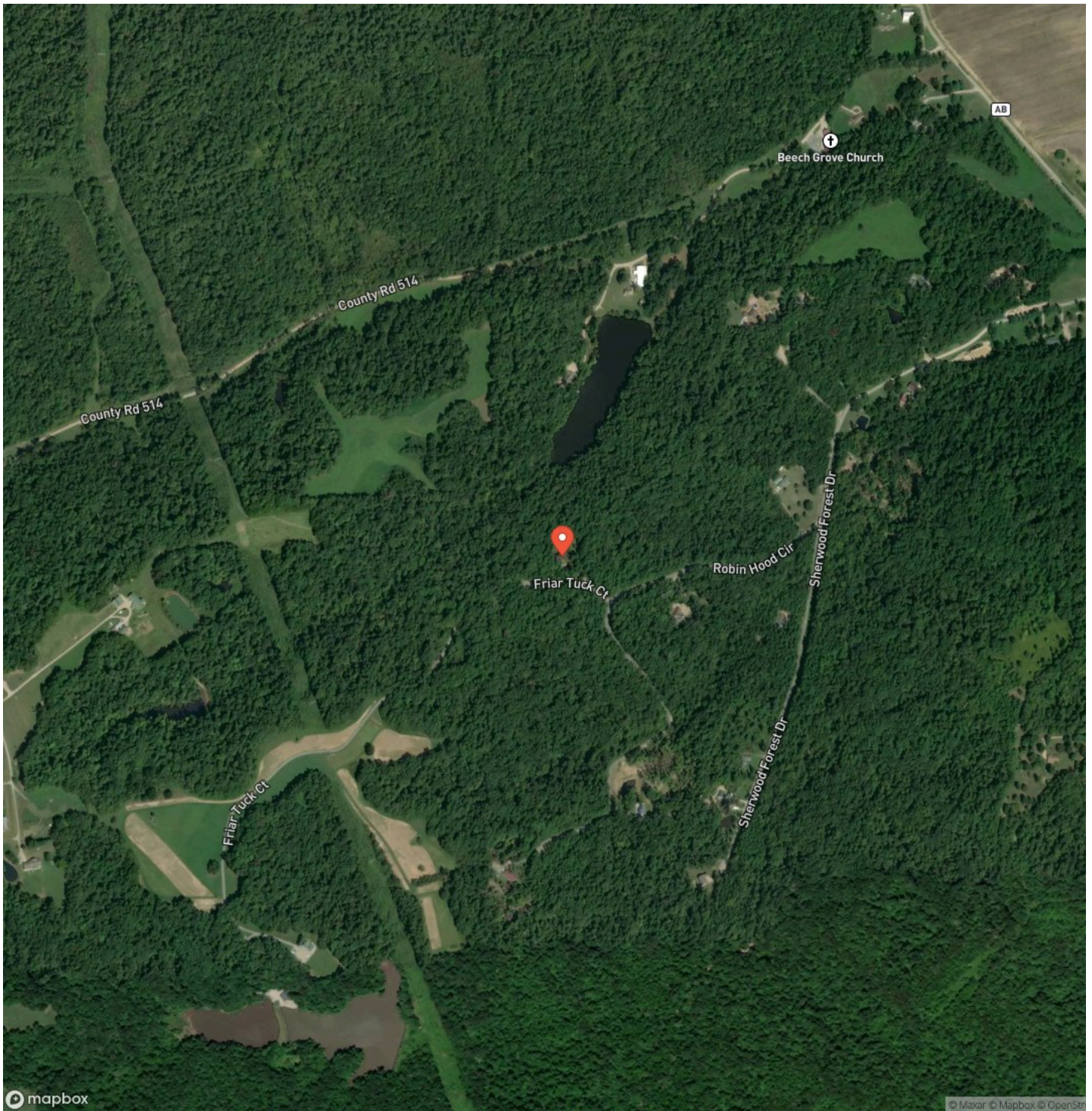


Beautiful Cozy Log Cabin For Sale in Essex, MO
Essex, MO / Stoddard County

Locator Map



Satellite Map



Beautiful Cozy Log Cabin For Sale in Essex, MO

Essex, MO / Stoddard County

LISTING REPRESENTATIVE

For more information contact:



Representative

Paul Fox

Mobile

(573) 421-8795

Email

pfox@mossyoakproperties.com

Address

947 N Westwood Blvd

City / State / Zip

NOTES

[illegible]

This image shows a single sheet of white paper with horizontal ruling lines. The lines are evenly spaced and run across the width of the page. There are no margins, text, or other markings on the paper.



MORE INFO ONLINE:
MossyOakProperties.com

DISCLAIMERS

Information in this brochure is provided solely for information purposes and does not constitute an offer to sell or advertise real estate outside the states in which broker or agent licensed. The information presented has been obtained from sources deemed to be reliable, but is not guaranteed or warranted by the agent, broker, or the sellers of these properties. This offering is subject to errors, omissions, prior sale, price change, correction or withdrawal from the market without notice. All references to age, square footage, income, expenses, acreage, carrying capacity, and land classification, etc. are approximate. Prospective buyers are chargeable with and expected to conduct their own independent investigation of the information and the property and to rely only on those results. Sellers reserve the right to accept or reject any and all offers without liability to any buyer or cooperating broker.

Maps are provided for illustration purposes only, the accuracy is not warranted. Parcels on interactive maps are not adjusted to match aerial backgrounds. This information is for reference purposes only and is not a legal document. Data maps contain errors. The seller and seller's agent are making known to all potential buyers that there may be variations between the location of the existing fence lines and the legal description of the deeded property. Seller and seller's agent make no warranties with regard to the location of the fence lines in relationship to the deeded property lines, nor does the Seller make any warranties or representations with regard to the specific acreage contained within the fenced property lines. Seller is selling the property in an "as is" condition, which includes the location of the fences as they exist. Boundaries shown on the accompanying maps are approximate, based on county parcel data. The maps are not to scale. The accuracy of the maps is not guaranteed. Prospective buyers are encouraged to verify fence lines, deeded property lines and acreages using a licensed surveyor at their own expense.

Mossy Oak Properties Mozark Realty

947 N. Westwood Blvd.

Poplar Bluff, MO 63901

(573) 712-2252

MossyOakProperties.com
