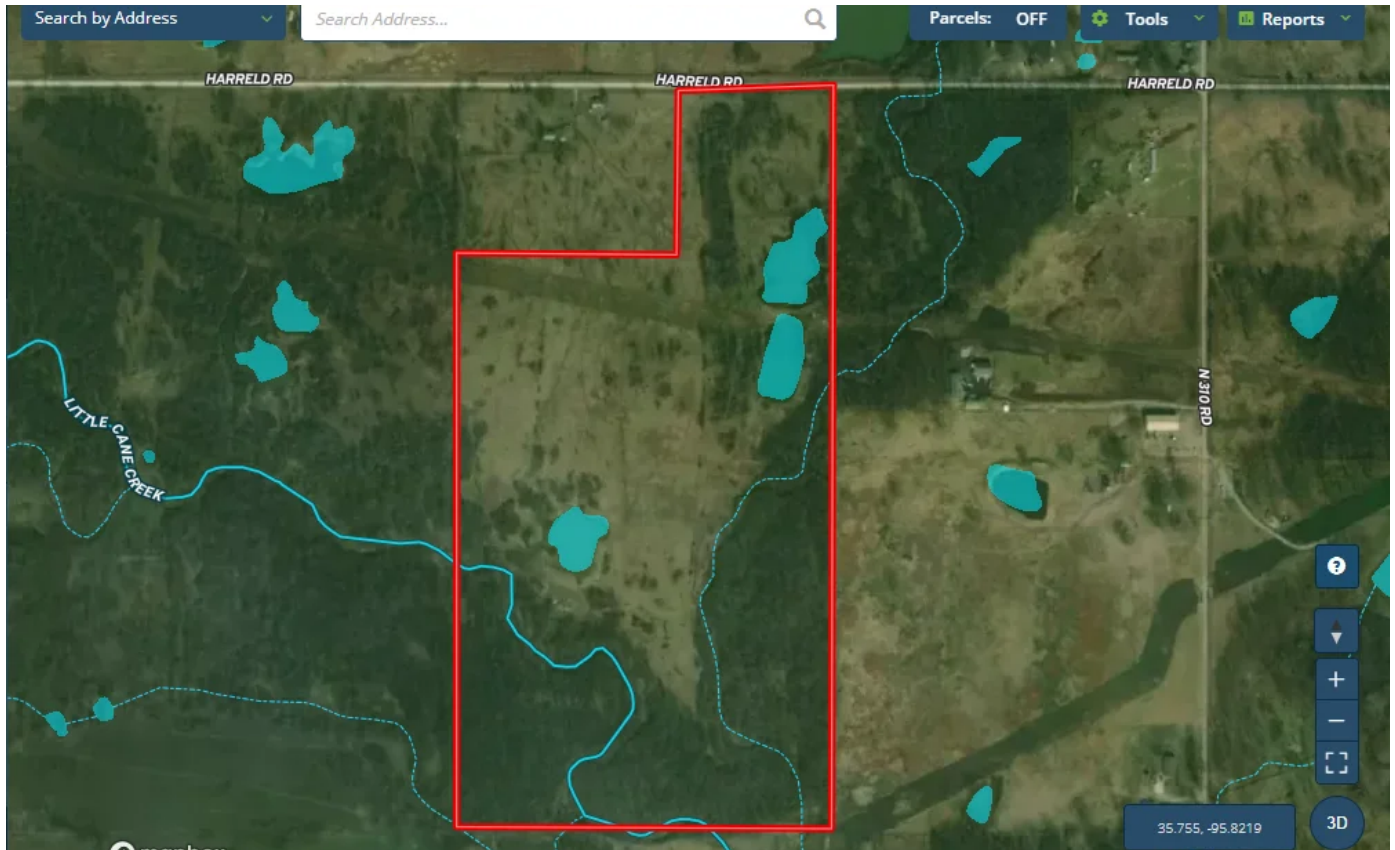


Bald Hill 65
Okmulgee, OK 74447

\$199,750
65± Acres
Okmulgee County



MORE INFO ONLINE:

Bald Hill 65
Okmulgee, OK / Okmulgee County

SUMMARY

City, State Zip

Okmulgee, OK 74447

County

Okmulgee County

Type

Farms, Hunting Land, Ranches, Recreational Land

Latitude / Longitude

35.7544 / -95.8251

Acreage

65

Price

\$199,750

Property Website

<https://greatplainslandcompany.com/detail/bald-hill-65-okmulgee-oklahoma/33843>



Bald Hill 65

Okmulgee, OK / Okmulgee County

PROPERTY DESCRIPTION

Here is an excellent opportunity to own a true multi purposed small acreage track of land! The Bald Hill 65, is 65 +/- acres of hunting, fishing, grazing, haying, etc., with water and electricity available for anyone looking to build. County road access on the north end leads way into this property of cross fenced pastures with 3 ponds, and 2 different wet weather creeks that cut through the south end of this acreage with thick cover. Twin Hills school sits a half mile west of this property. Build your dream house, run some livestock, hunt and fish on this rare piece of real estate!

- Build Sites
- Hunting
- Fishing
- Grass
- Ponds
- Creeks
- Trees

Location

- .5 miles from Bald Hill
- 30 miles to Broken Arrow
- 15 miles to Okmulgee
- 27 miles to Muskogee
- 40 miles to Tulsa International Airport

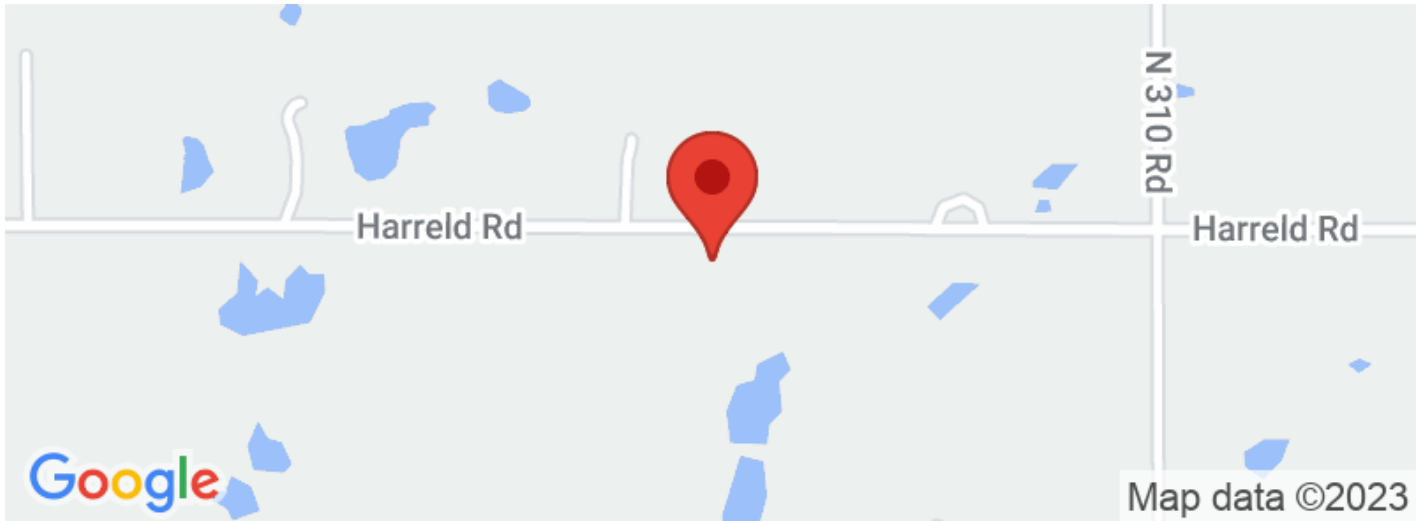
MORE INFO ONLINE:

greatplainslandcompany.com

Bald Hill 65
Okmulgee, OK / Okmulgee County



Locator Maps



MORE INFO ONLINE:

Aerial Maps



MORE INFO ONLINE:

Bald Hill 65
Okmulgee, OK / Okmulgee County

LISTING REPRESENTATIVE

For more information contact:



Representative

Ky Pfleider

Mobile

(580) 430-7005

Email

ky@greatplains.land

Address

City / State / Zip

Alva, OK 73717

NOTES

MORE INFO ONLINE:

greatplainslandcompany.com

[illegible]

DISCLAIMERS

Information in this brochure is provided solely for information purposes and does not constitute an offer to sell or advertise real estate outside the states in which broker or agent licensed. The information presented has been obtained from sources deemed to be reliable, but is not guaranteed or warranted by the agent, broker, or the sellers of these properties. This offering is subject to errors, omissions, prior sale, price change, correction or withdrawal from the market without notice. All references to age, square footage, income, expenses, acreage, carrying capacity, and land classification, etc. are approximate. Prospective buyers are chargeable with and expected to conduct their own independent investigation of the information and the property and to rely only on those results. Sellers reserve the right to accept or reject any and all offers without liability to any buyer or cooperating broker.

Maps are provided for illustration purposes only, the accuracy is not warranted. Parcels on interactive maps are not adjusted to match aerial backgrounds. This information is for reference purposes only and is not a legal document. Data maps contain errors. The seller and seller's agent are making known to all potential buyers that there may be variations between the location of the existing fence lines and the legal description of the deeded property. Seller and seller's agent make no warranties with regard to the location of the fence lines in relationship to the deeded property lines, nor does the Seller make any warranties or representations with regard to the specific acreage contained within the fenced property lines. Seller is selling the property in an "as is" condition, which includes the location of the fences as they exist. Boundaries shown on the accompanying maps are approximate, based on county parcel data. The maps are not to scale. The accuracy of the maps is not guaranteed. Prospective buyers are encouraged to verify fence lines, deeded property lines and acreages using a licensed surveyor at their own expense.

MORE INFO ONLINE:

Great Plains Land Company
505 W. Main St
Yukon, OK 73099
(405) 255-0051
greatplainslandcompany.com
