

42+/- Acres in Knox County IN
N Wampler Rd
Bicknell, IN 47512

\$300,000
42± Acres
Knox County



42+/- Acres in Knox County IN
Bicknell, IN / Knox County

SUMMARY

Address

N Wampler Rd

City, State Zip

Bicknell, IN 47512

County

Knox County

Type

Farms, Recreational Land

Latitude / Longitude

38.732291 / -87.28713

Acreage

42

Price

\$300,000

Property Website

<https://www.integrityrealtyindiana.com/property/42-acres-in-knox-county-in-knox-indiana/98481/>



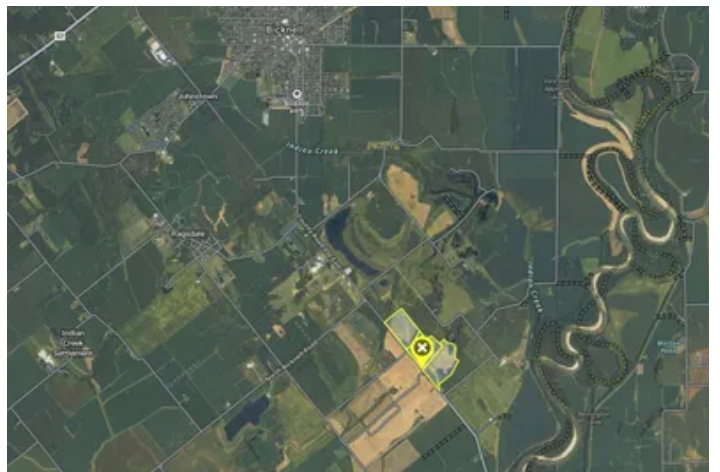
42+/- Acres in Knox County IN

Bicknell, IN / Knox County

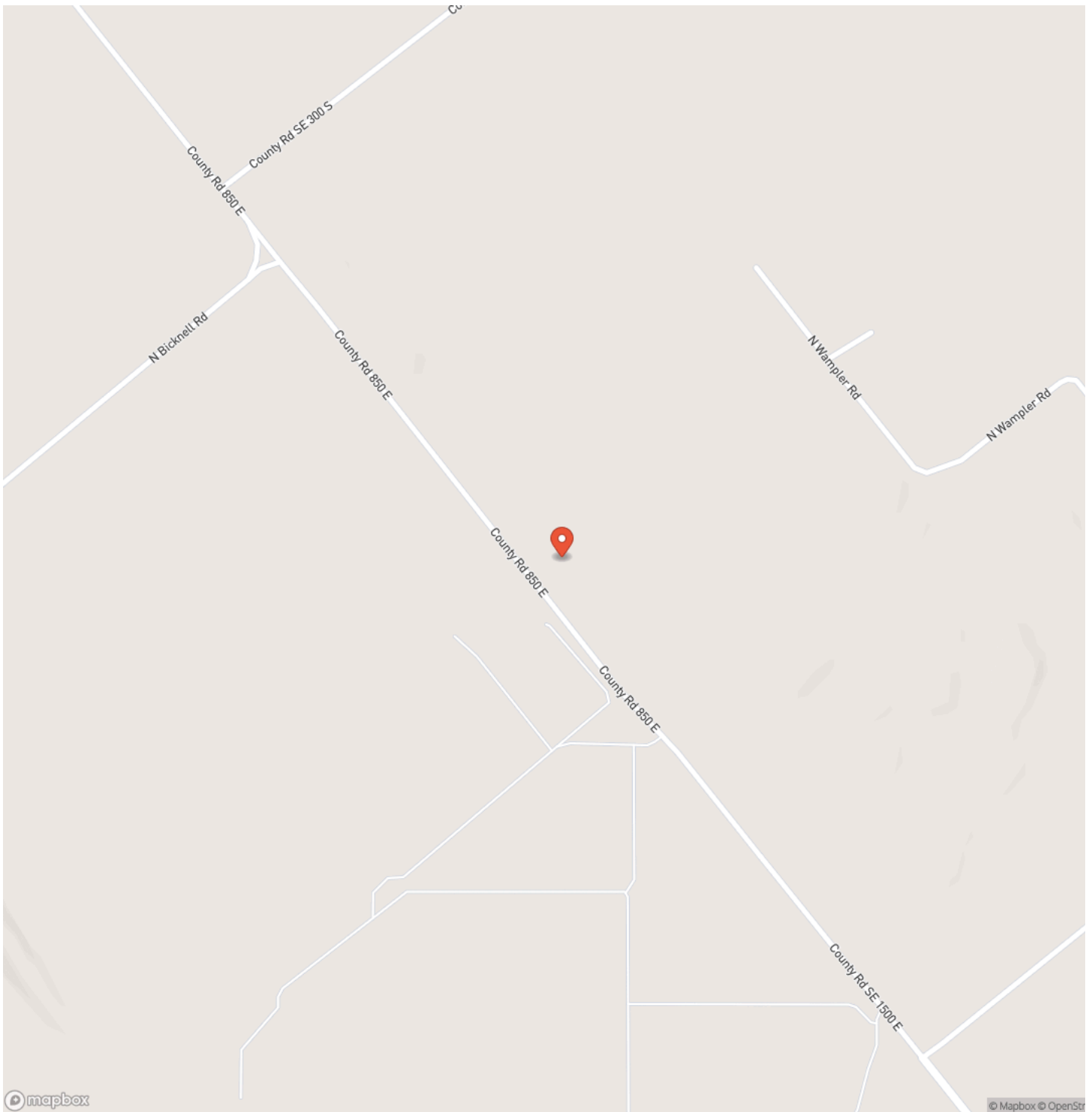
PROPERTY DESCRIPTION

Don't miss this rare opportunity to own 42 acres of mostly tillable land near Bicknell, Indiana. Situated on a paved road with electric available, this property offers both accessibility and income potential through crop production. With level to gently rolling topography and multiple potential building sites, it's perfect for a dream homesite, hobby farm, or long-term investment. Enjoy wide-open views, productive ground, and the flexibility to build now or hold for future development.

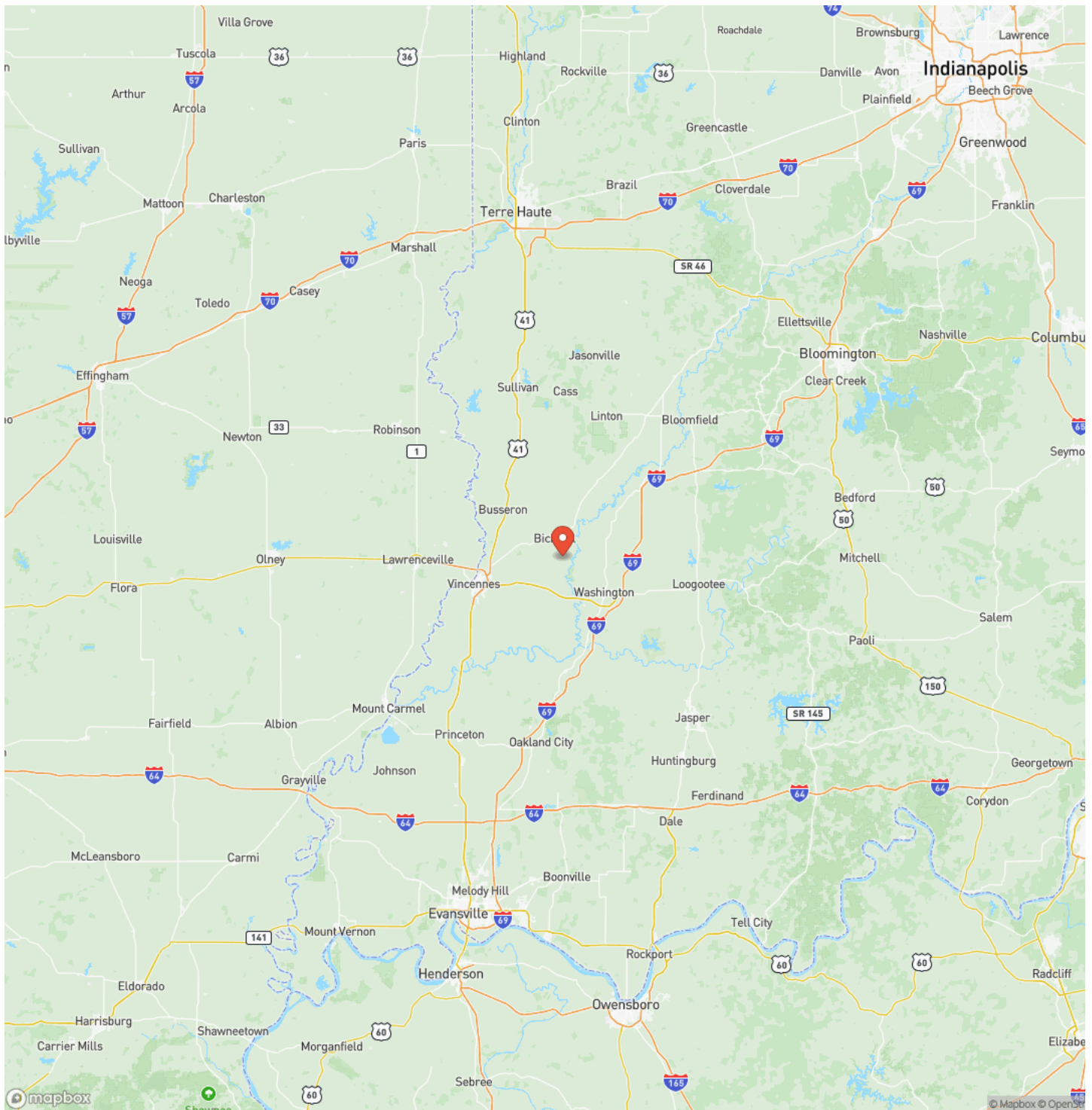
42+/- Acres in Knox County IN
Bicknell, IN / Knox County



Locator Map



Locator Map



42+/- Acres in Knox County IN
Bicknell, IN / Knox County

Satellite Map



42+/- Acres in Knox County IN
Bicknell, IN / Knox County

LISTING REPRESENTATIVE

For more information contact:



Representative

Delmar Wagler

Mobile

(812) 787-2683

Office

(812) 636-5600

Email

delmar@integrityrealtygroup.net

Address

8398 E 1150 N

City / State / Zip

NOTES

[illegible]

This image shows a single sheet of white paper with horizontal ruling lines. The lines are evenly spaced and run across the width of the page. There are no margins, text, or other markings on the paper.

DISCLAIMERS

Information in this brochure is provided solely for information purposes and does not constitute an offer to sell or advertise real estate outside the states in which broker or agent licensed. The information presented has been obtained from sources deemed to be reliable, but is not guaranteed or warranted by the agent, broker, or the sellers of these properties. This offering is subject to errors, omissions, prior sale, price change, correction or withdrawal from the market without notice. All references to age, square footage, income, expenses, acreage, carrying capacity, and land classification, etc. are approximate. Prospective buyers are chargeable with and expected to conduct their own independent investigation of the information and the property and to rely only on those results. Sellers reserve the right to accept or reject any and all offers without liability to any buyer or cooperating broker.

Maps are provided for illustration purposes only, the accuracy is not warranted. Parcels on interactive maps are not adjusted to match aerial backgrounds. This information is for reference purposes only and is not a legal document. Data maps contain errors. The seller and seller's agent are making known to all potential buyers that there may be variations between the location of the existing fence lines and the legal description of the deeded property. Seller and seller's agent make no warranties with regard to the location of the fence lines in relationship to the deeded property lines, nor does the Seller make any warranties or representations with regard to the specific acreage contained within the fenced property lines. Seller is selling the property in an "as is" condition, which includes the location of the fences as they exist. Boundaries shown on the accompanying maps are approximate, based on county parcel data. The maps are not to scale. The accuracy of the maps is not guaranteed. Prospective buyers are encouraged to verify fence lines, deeded property lines and acreages using a licensed surveyor at their own expense.

Integrity Realty Group LLC
8398 E 1150 N
Odon, IN 47562
(812) 787-2683
integrityrealtyindiana.com
