

Big Creek 120
Murdock Rd.
Pine Bluff, AR 71601

\$234,000
120± Acres
Jefferson County



Big Creek 120
Pine Bluff, AR / Jefferson County

SUMMARY

Address

Murdock Rd.

City, State Zip

Pine Bluff, AR 71601

County

Jefferson County

Type

Timberland, Hunting Land, Recreational Land, Undeveloped Land

Latitude / Longitude

34.1639806 / -92.1867468

Taxes (Annually)

150

Acreage

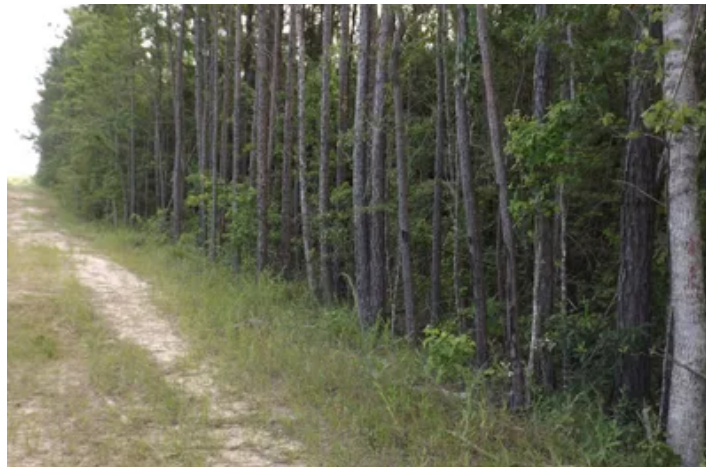
120

Price

\$234,000

Property Website

<https://www.mossyoakproperties.com/property/big-creek-120-jefferson-arkansas/19585/>



Big Creek 120
Pine Bluff, AR / Jefferson County

PROPERTY DESCRIPTION

This 120 +/- acre pine timber tract is about 8 miles west of Interstate 530 in Pine Bluff Arkansas. This acreage has three 40 acre tracts of pine timber ranging in planting dates from 2000 to 2020. A large creek borders the eastern edge of the property. There are several trails you can use to navigate your way around the property and view the wildlife that inhabits it. This would make a good investment property and a quick getaway from the city. Parcel ID's [001-11166-000](#) , [001-11150-001](#) , [001-11150-000](#) for 120 Acres +/- in Jefferson County, Arkansas. Contact Steven Harvey for more information at [870-737-3637](#).

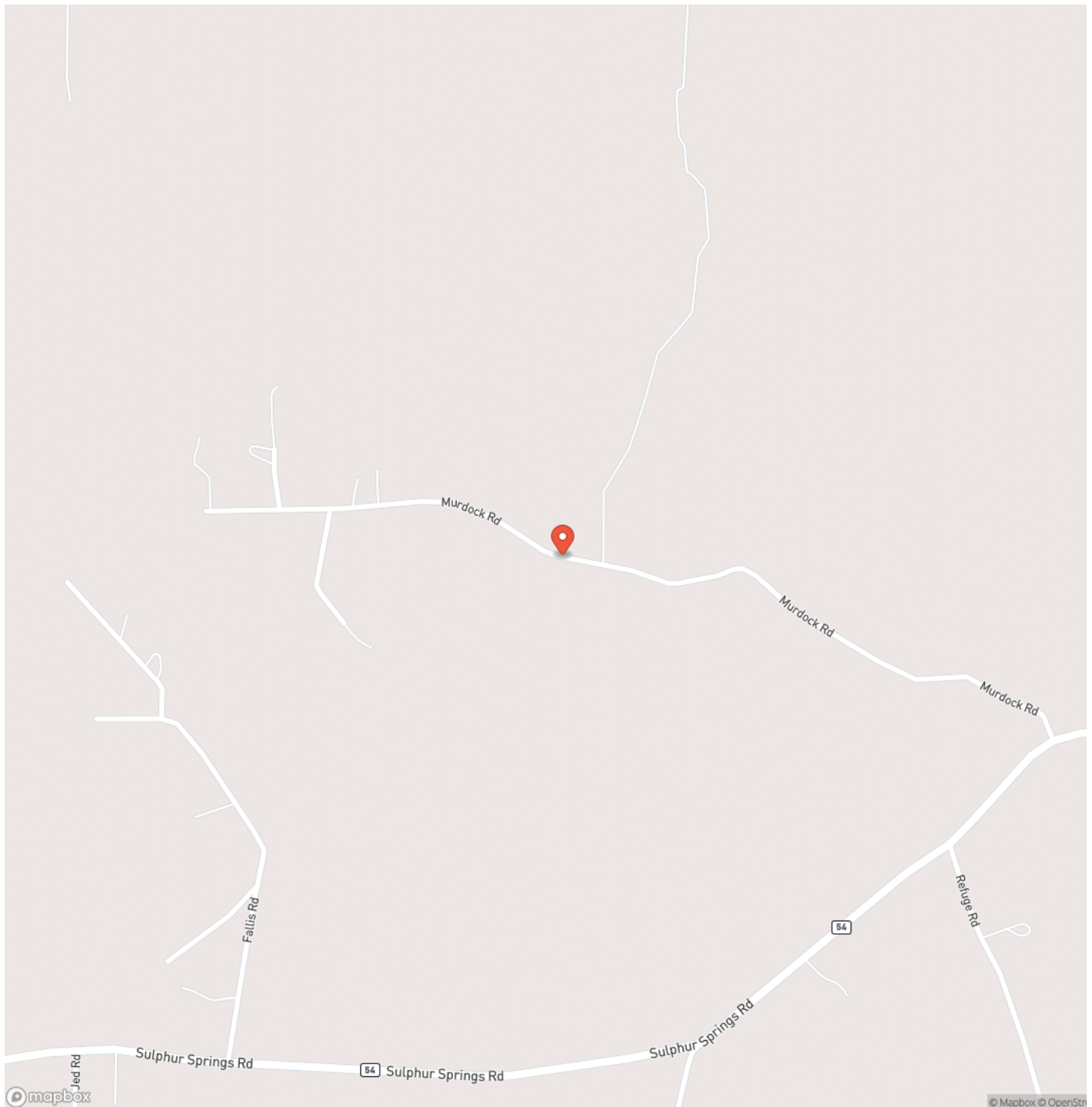
Neither the seller, Mossy Oak Properties Land & Home (MOPLH), their subsidiaries, affiliates nor representatives warrant the accuracy, adequacy or completeness of any information contained herein regarding the property, its condition, boundaries, access, acreage, or timber stand information. Maps, timber evaluations and all information contained herein is provided "AS IS," as a courtesy to potential buyers. Potential buyers should make their own determination regarding the accuracy of the information provided. Potential buyer's agent(s) must be identified on first contact with MOPLH and must accompany the potential buyer on showings to receive full fee participation. Otherwise, the fee participation will be at the sole discretion of MOPLH. All property is subject to change, withdrawal, or prior sale. MOPLH expressly disclaims liability for errors or omissions and does not assume liability for typographical errors, misprints, nor for misinformation that may have been given to us.



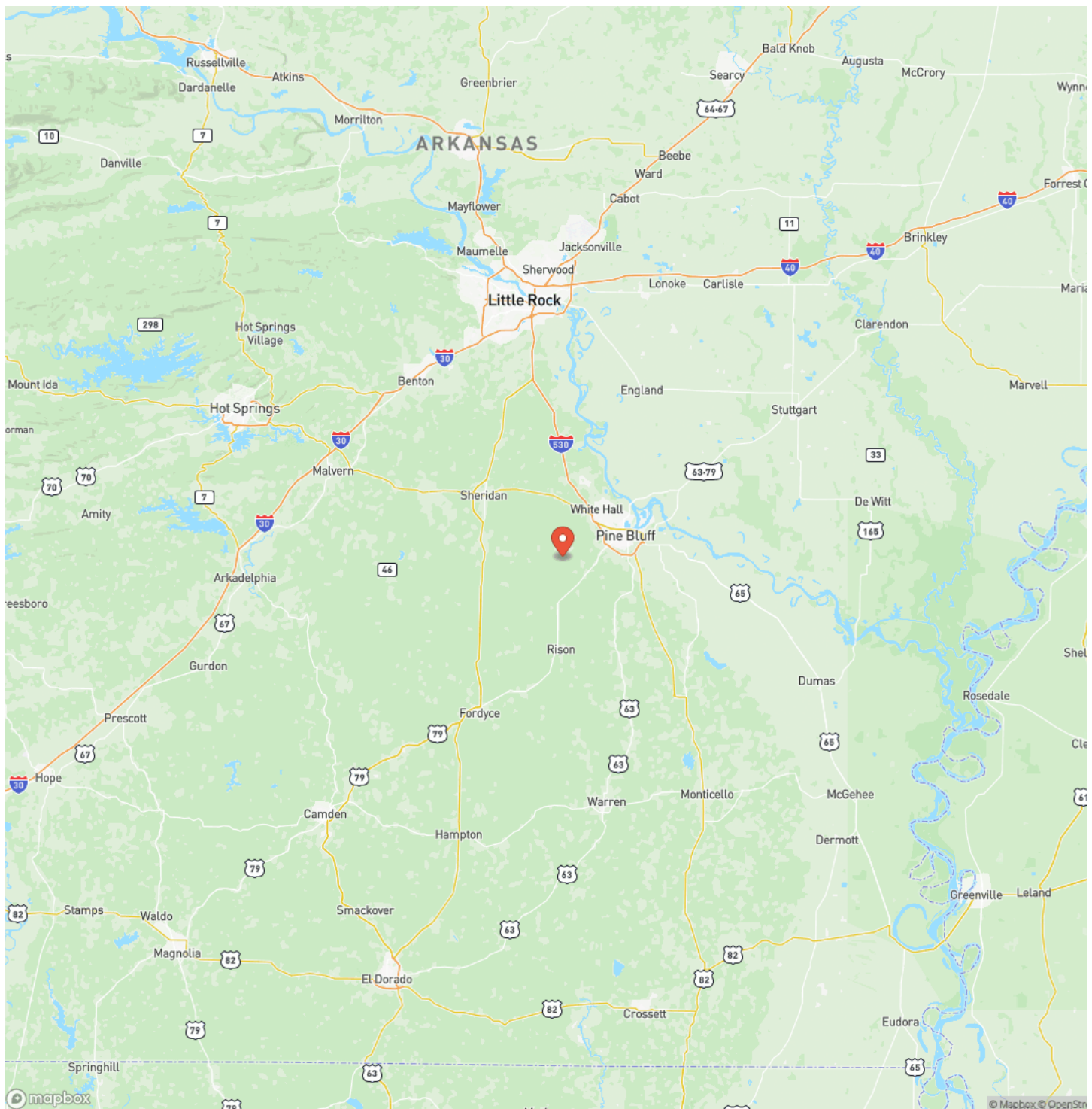
Big Creek 120
Pine Bluff, AR / Jefferson County



Locator Map



Locator Map

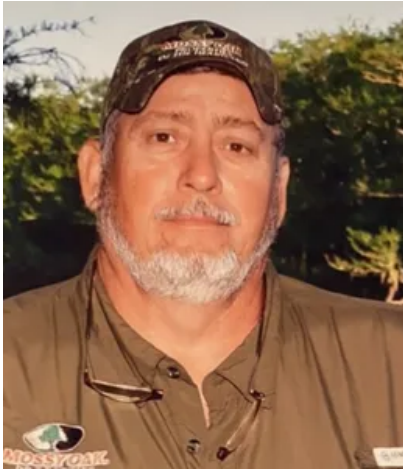


Satellite Map



LISTING REPRESENTATIVE

For more information contact:



Representative

Steven Harvey

Mobile

(870) 737-3637

Office

(870) 807-6731

Email

sharvey@mossyoakproperties.com

Address

819 Lakewood Road

City / State / Zip

Camden, AR 71701

NOTES

[illegible]

This image shows a single sheet of white paper with horizontal ruling lines. The lines are evenly spaced and run across the width of the page. There are no margins, text, or other markings on the paper.



MossyOakProperties.com

DISCLAIMERS

Information in this brochure is provided solely for information purposes and does not constitute an offer to sell or advertise real estate outside the states in which broker or agent licensed. The information presented has been obtained from sources deemed to be reliable, but is not guaranteed or warranted by the agent, broker, or the sellers of these properties. This offering is subject to errors, omissions, prior sale, price change, correction or withdrawal from the market without notice. All references to age, square footage, income, expenses, acreage, carrying capacity, and land classification, etc. are approximate. Prospective buyers are chargeable with and expected to conduct their own independent investigation of the information and the property and to rely only on those results. Sellers reserve the right to accept or reject any and all offers without liability to any buyer or cooperating broker.

Maps are provided for illustration purposes only, the accuracy is not warranted. Parcels on interactive maps are not adjusted to match aerial backgrounds. This information is for reference purposes only and is not a legal document. Data maps contain errors. The seller and seller's agent are making known to all potential buyers that there may be variations between the location of the existing fence lines and the legal description of the deeded property. Seller and seller's agent make no warranties with regard to the location of the fence lines in relationship to the deeded property lines, nor does the Seller make any warranties or representations with regard to the specific acreage contained within the fenced property lines. Seller is selling the property in an "as is" condition, which includes the location of the fences as they exist. Boundaries shown on the accompanying maps are approximate, based on county parcel data. The maps are not to scale. The accuracy of the maps is not guaranteed. Prospective buyers are encouraged to verify fence lines, deeded property lines and acreages using a licensed surveyor at their own expense.



Mossy Oak Properties Land and Home
819 Lakewood Road
Camden, AR 71701
(870) 807-6731
MossyOakProperties.com

