

NEW PRICE! 2.04+/- acre NC mountain land with existing well -- camp now, build later!
00000 Apple Farm Road
Bakersville, NC 28705

\$69,900
2.040± Acres
Mitchell County

Call Laura! 828-208-3532

Carolina Timber & Realty



NEW PRICE! 2.04+/- acre NC mountain land with existing well -- camp now, build later!
Bakersville, NC / Mitchell County

SUMMARY

Address

00000 Apple Farm Road Lot 13

City, State Zip

Bakersville, NC 28705

County

Mitchell County

Type

Lot

Latitude / Longitude

36.005617 / -82.092225

Taxes (Annually)

256

HOA (Annually)

350

Acreage

2.040

Price

\$69,900

Property Website

<https://www.mossoakproperties.com/property/new-price-2-04-acre-nc-mountain-land-with-existing-well-camp-now-build-later-mitchell-north-carolina/104413/>



NEW PRICE! 2.04+/- acre NC mountain land with existing well -- camp now, build later!
Bakersville, NC / Mitchell County

PROPERTY DESCRIPTION

FRESHLY RE-PRICED! Private 2.04 +/- acre mountain property near Bakersville NC, with an existing well already installed -- ideal for camping now and building your mountain getaway later! This homesite is in the desirable Orchard at Greene Cove community. Lot #13 Apple Farm Rd offers privacy, gentle terrain, and potential long-range mountain views with selective clearing. Major improvements already completed, including a documented 15 GPM private well, power at the lot, previously approved 3-bedroom septic permit, installed culvert/access, and house plans are included at no additional cost. The property borders headwaters of Green Cove Creek, with adjacent land across the creek expected to become conservancy land, creating a rare "forever wild" setting. Community covenants allow limited camping/RV to use up to 4 consecutive weeks at a time and up to 12 total weeks per year, allowing you to enjoy the property during the hot summer months while planning your future mountain home. The subdivision's site-built homes only help protect long-term property values. Convenient to the Blue Ridge Parkway, Appalachian Trail, Toe River, Bakersville, Spruce Pine, Burnsville, Asheville, and Johnson City, TN. Wildlife, cool mountain breezes, and dark star-filled skies complete the experience. Rare opportunity to own improved mountain land that is ready to enjoy now and build later.

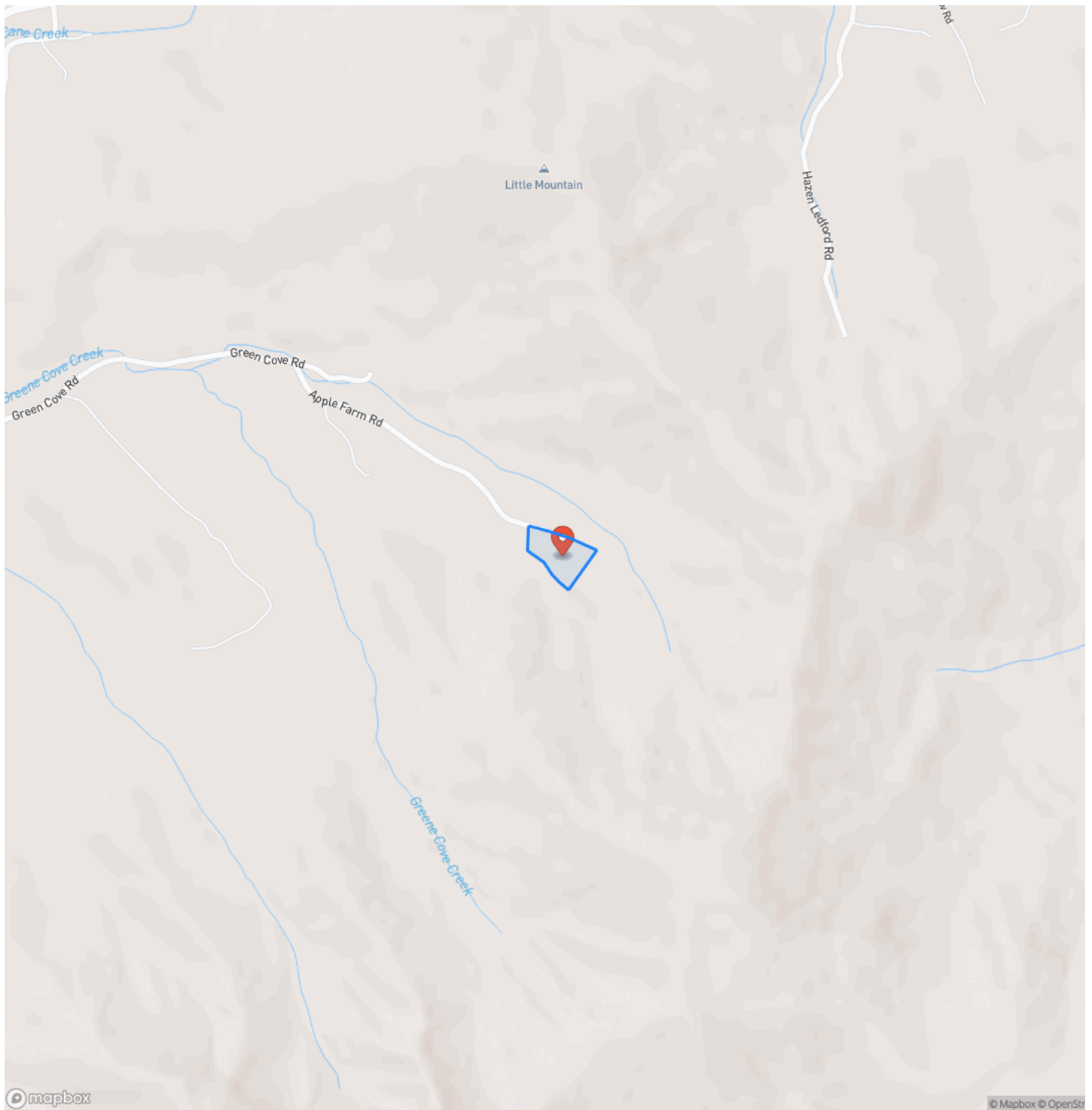
Contact Laura Handley of Mossy Oak Properties at [828-208-3532](tel:828-208-3532) or lhandley@mossyoakproperties.com for more information or to schedule a showing!

NEW PRICE! 2.04+/- acre NC mountain land with existing well -- camp now, build later!
Bakersville, NC / Mitchell County



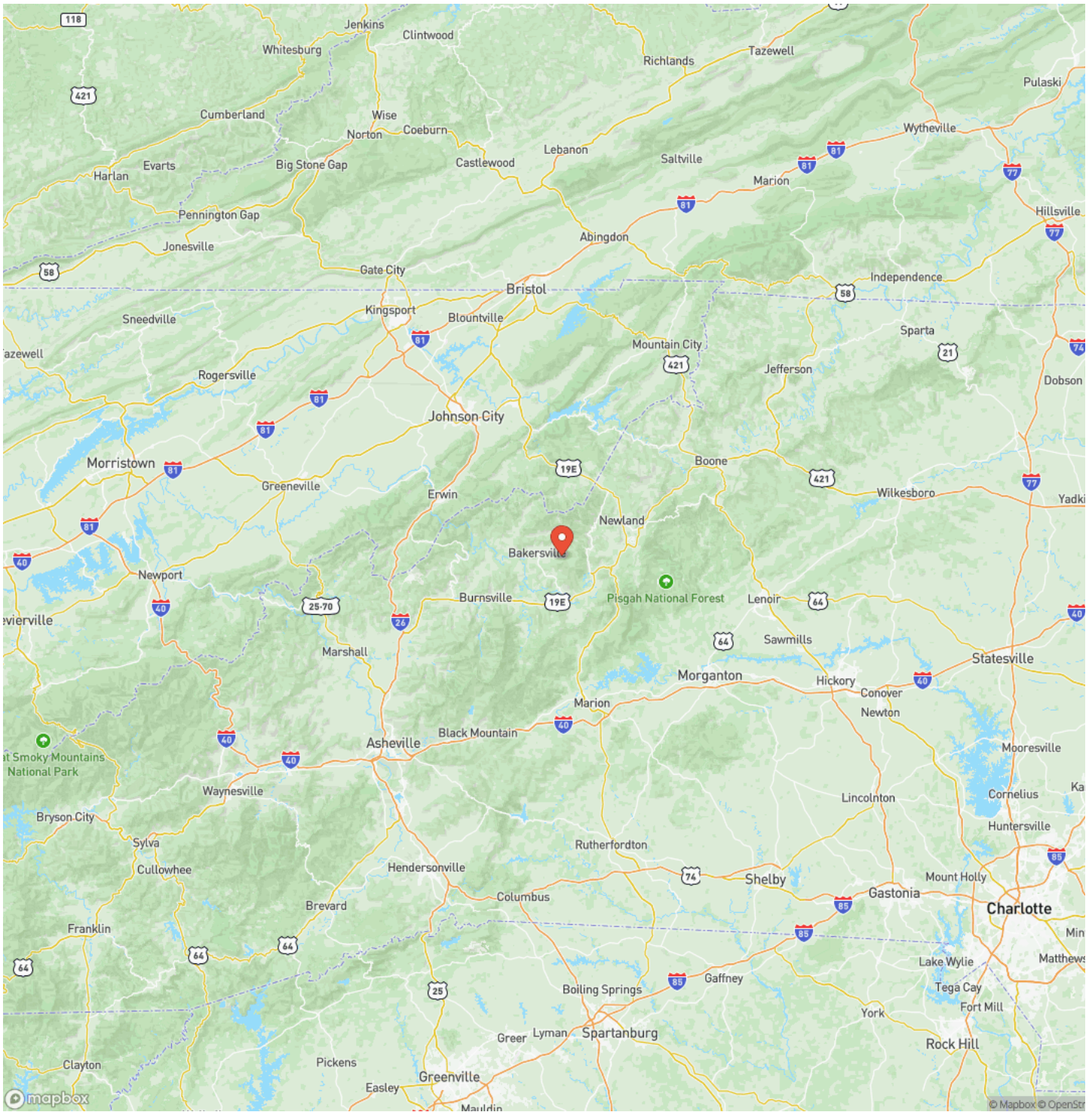
NEW PRICE! 2.04+/- acre NC mountain land with existing well -- camp now, build later!
Bakersville, NC / Mitchell County

Locator Map



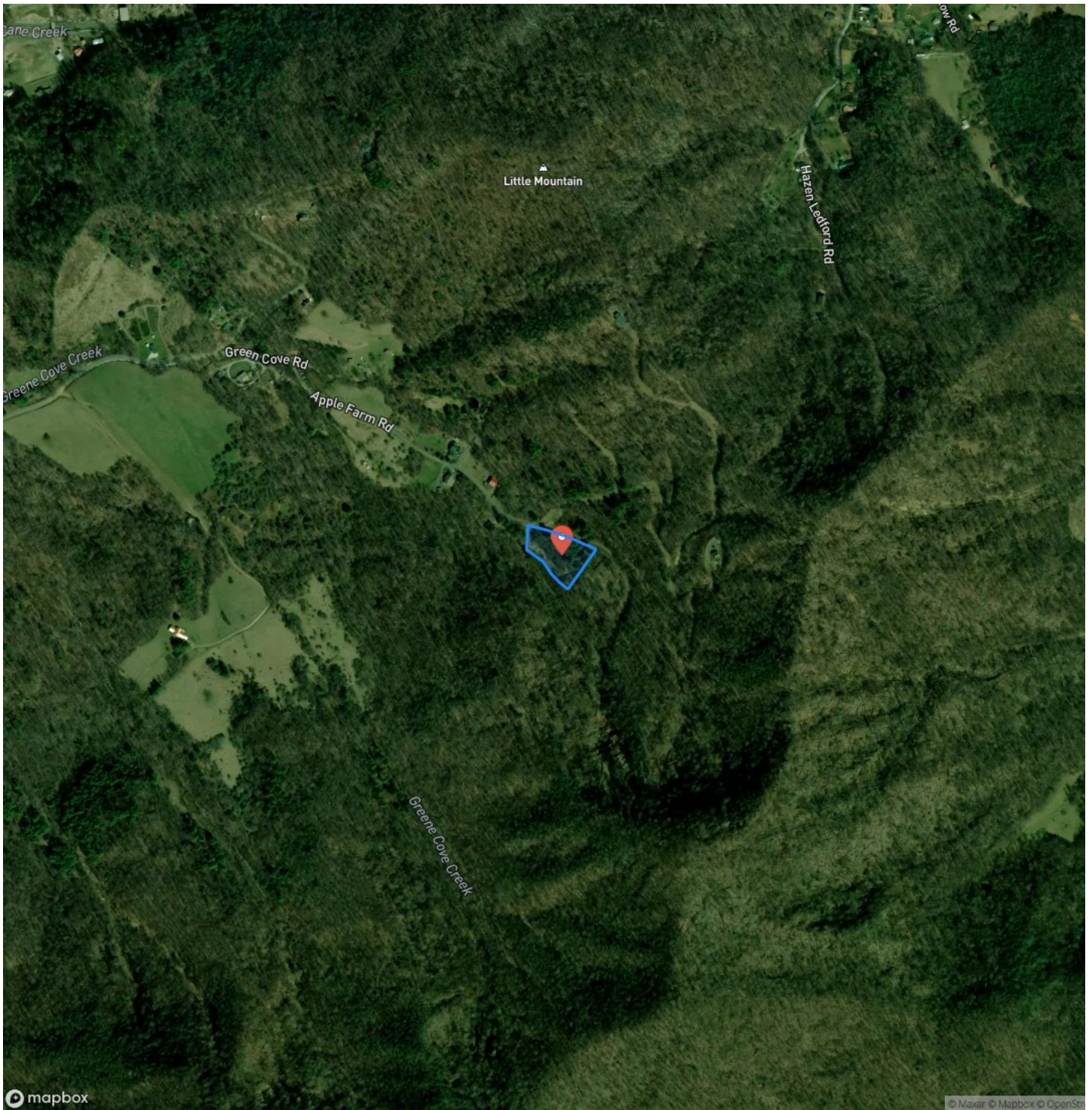
**NEW PRICE! 2.04+/- acre NC mountain land with existing well -- camp now, build later!
Bakersville, NC / Mitchell County**

Locator Map



NEW PRICE! 2.04+/- acre NC mountain land with existing well -- camp now, build later!
Bakersville, NC / Mitchell County

Satellite Map



DISCLAIMERS

Information re adjoining conservancy is from HOA officer. This information should be re-confirmed during due diligence.



Mossy Oak Properties Carolina Timber and Realty

560 W Main Street

Sylva, NC 28779

(828) 477-4248

<https://mossyoakproperties.com/>

