

22.69+/- acre hunt camp next to the Pisgah National Forest!!
00 Poplar Creek Road
Green Mountain, NC 28740

\$195,000
22.690± Acres
Mitchell County



22.69+/- acre hunt camp next to the Pisgah National Forest!!
Green Mountain, NC / Mitchell County

SUMMARY

Address

00 Poplar Creek Road

City, State Zip

Green Mountain, NC 28740

County

Mitchell County

Type

Hunting Land, Recreational Land, Undeveloped Land

Latitude / Longitude

36.0912 / -82.321

Acreage

22.690

Price

\$195,000

Property Website

<https://www.mossyoakproperties.com/property/22-69-acre-hunt-camp-next-to-the-pisgah-national-forest-mitchell-north-carolina/54556/>



22.69+/- acre hunt camp next to the Pisgah National Forest!!

Green Mountain, NC / Mitchell County

PROPERTY DESCRIPTION

22.69+/- acres with end-of-road privacy, unspoiled woodlands, and pure mountain water throughout! This AMAZING hunt camp abuts the Pisgah National Forest on two sides, with over a thousand acres of USFS game land stretching all the way to the TN line. It is ideal for the hunter, forager, mountain adventurer, or homesteader/prepper looking for the ultimate in off-grid privacy. Enjoy the rustic cabin with its vintage woodburning cookstove, or explore the gently sloping land to pick a homesite with your desired views! Sit on the bunkhouse porch and listen to Hughes Creek serenely bubble by, or scout the adjacent game lands for deer and turkey.

This parcel offers more than just extraordinary hunting. Poplar NC has a public access site at the headwaters of the famous Nolichucky River Gorge for Class III/IV whitewater thrills. Or put in upstream and sedately float, kayak or fish the Nolichucky and take out at the Poplar boat access. If high elevation peaks and views are what you desire, the Appalachian Trail and the famous Beauty Spot lookout point are only a few minutes' drive away. And although you feel hidden away from the world when you are at this parcel, it is a mere 15 minute drive to Erwin, TN, and 35 minutes to Johnson City, TN and its many amenities.

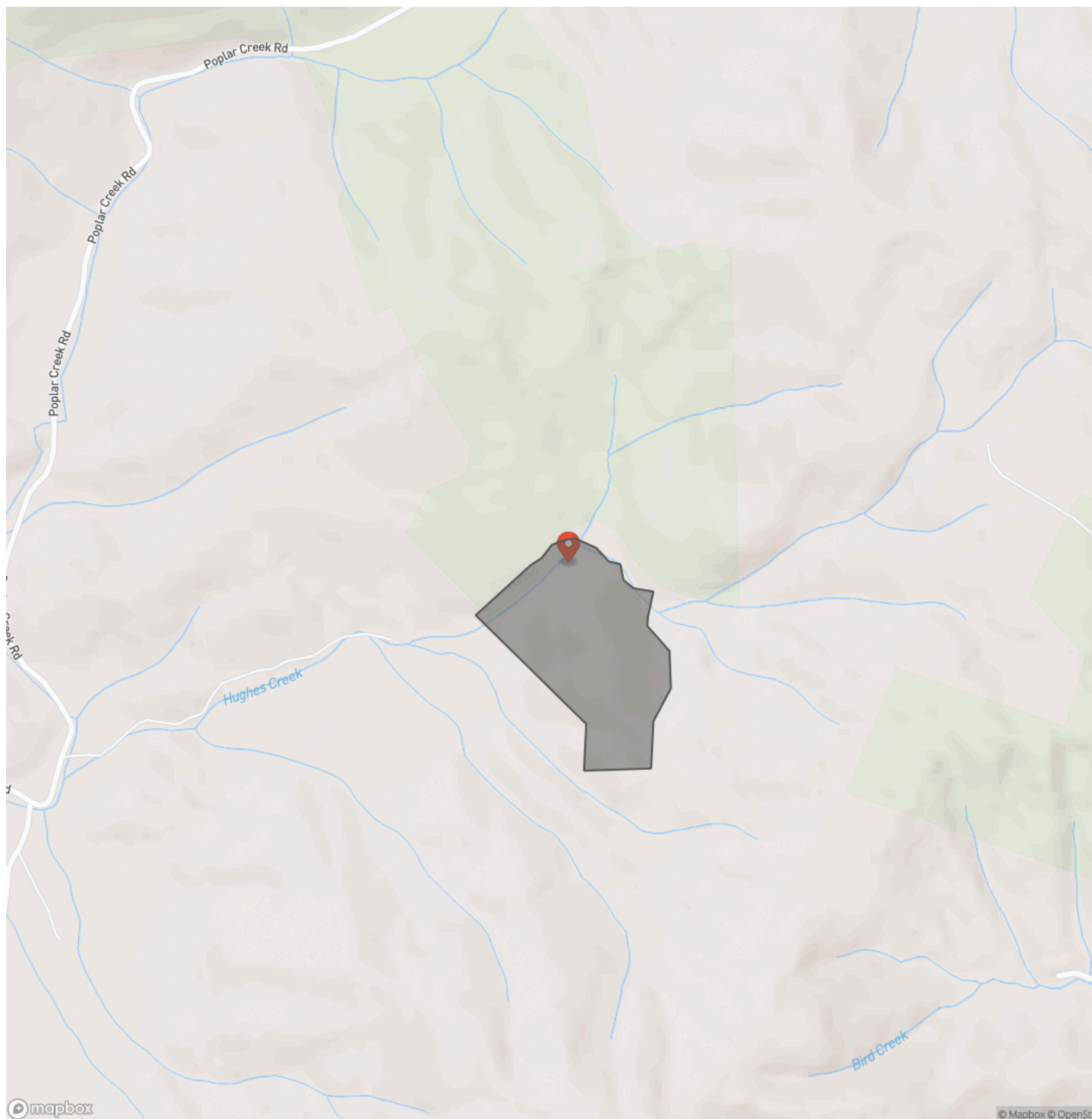
Contact Laura Handley of Mossy Oak Properties at [828-208-3532](tel:828-208-3532) to arrange to see this amazing parcel before it is gone!

22.69+/- acre hunt camp next to the Pisgah National Forest!!
Green Mountain, NC / Mitchell County



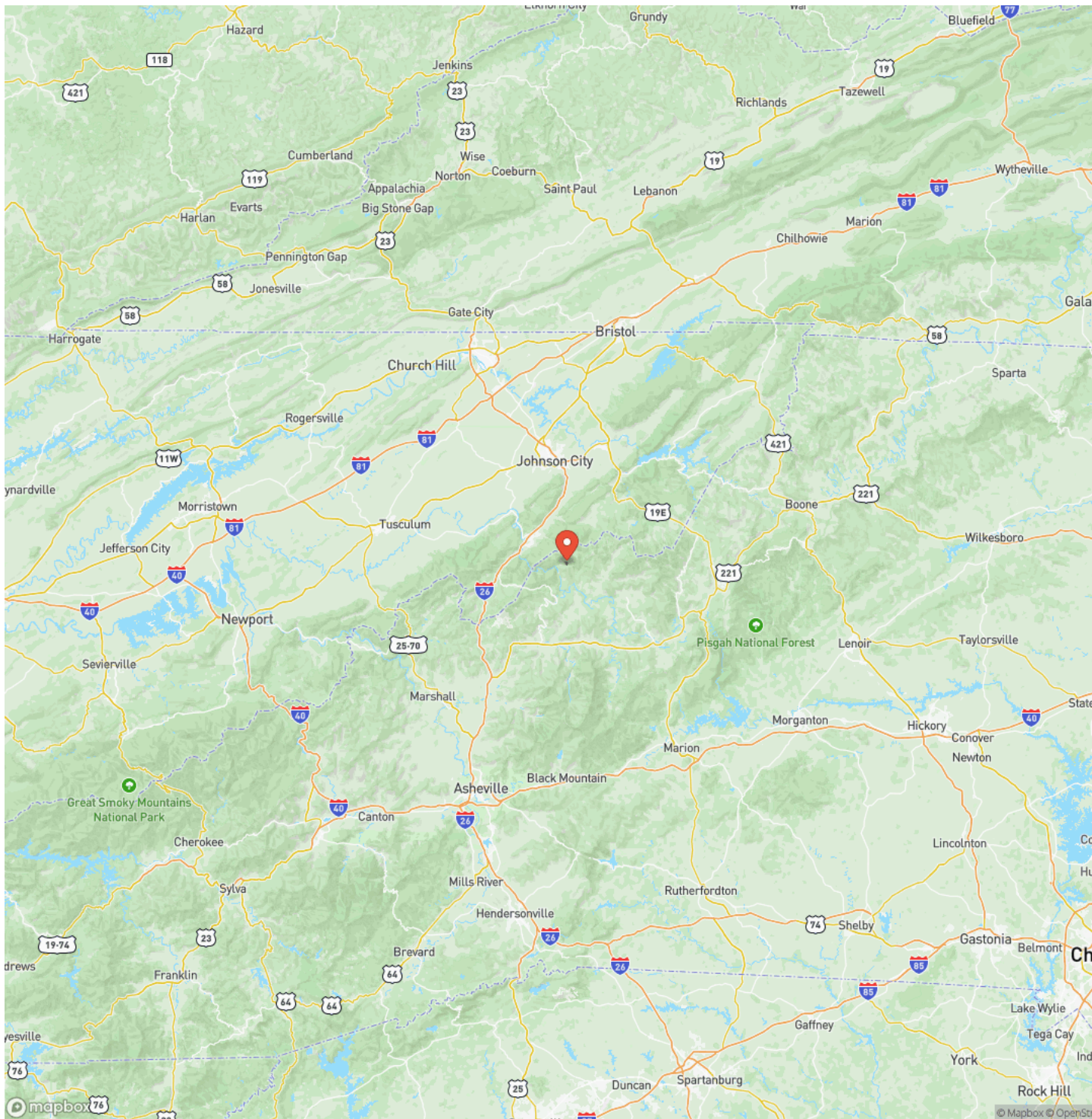
22.69+/- acre hunt camp next to the Pisgah National Forest!!
Green Mountain, NC / Mitchell County

Locator Map



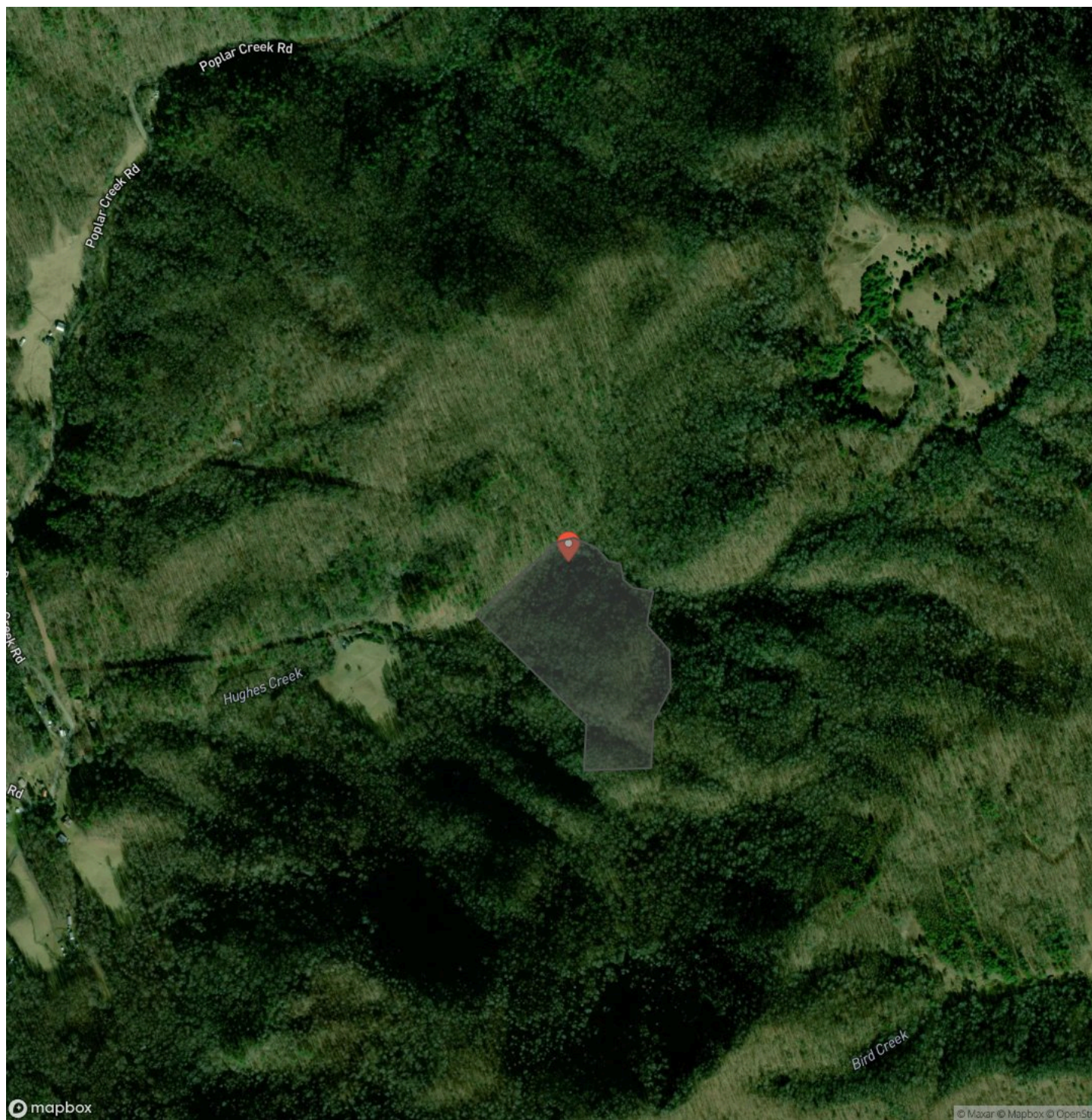
Green Mountain, NC / Mitchell County

Locator Map



22.69+/- acre hunt camp next to the Pisgah National Forest!!
Green Mountain, NC / Mitchell County

Satellite Map



22.69+/- acre hunt camp next to the Pisgah National Forest!!
Green Mountain, NC / Mitchell County

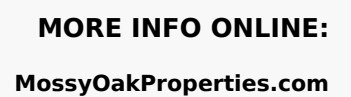
LISTING REPRESENTATIVE
For more information contact:



Representative
Laura Handley
Mobile
(828) 208-3532
Office
(828) 477-4248
Email
lhandley@mossyoakproperties.com
Address
City / State / Zip

NOTES

Notes section with multiple horizontal lines for text entry.

[illegible]

DISCLAIMERS

Information in this brochure is provided solely for information purposes and does not constitute an offer to sell or advertise real estate outside the states in which broker or agent licensed. The information presented has been obtained from sources deemed to be reliable, but is not guaranteed or warranted by the agent, broker, or the sellers of these properties. This offering is subject to errors, omissions, prior sale, price change, correction or withdrawal from the market without notice. All references to age, square footage, income, expenses, acreage, carrying capacity, and land classification, etc. are approximate. Prospective buyers are chargeable with and expected to conduct their own independent investigation of the information and the property and to rely only on those results. Sellers reserve the right to accept or reject any and all offers without liability to any buyer or cooperating broker.

Maps are provided for illustration purposes only, the accuracy is not warranted. Parcels on interactive maps are not adjusted to match aerial backgrounds. This information is for reference purposes only and is not a legal document. Data maps contain errors. The seller and seller's agent are making known to all potential buyers that there may be variations between the location of the existing fence lines and the legal description of the deeded property. Seller and seller's agent make no warranties with regard to the location of the fence lines in relationship to the deeded property lines, nor does the Seller make any warranties or representations with regard to the specific acreage contained within the fenced property lines. Seller is selling the property in an "as is" condition, which includes the location of the fences as they exist. Boundaries shown on the accompanying maps are approximate, based on county parcel data. The maps are not to scale. The accuracy of the maps is not guaranteed. Prospective buyers are encouraged to verify fence lines, deeded property lines and acreages using a licensed surveyor at their own expense.

Mossy Oak Properties Carolina Timber and Realty

560 W Main Street
Sylva, NC 28779
(828) 477-4248
MossyOakProperties.com

