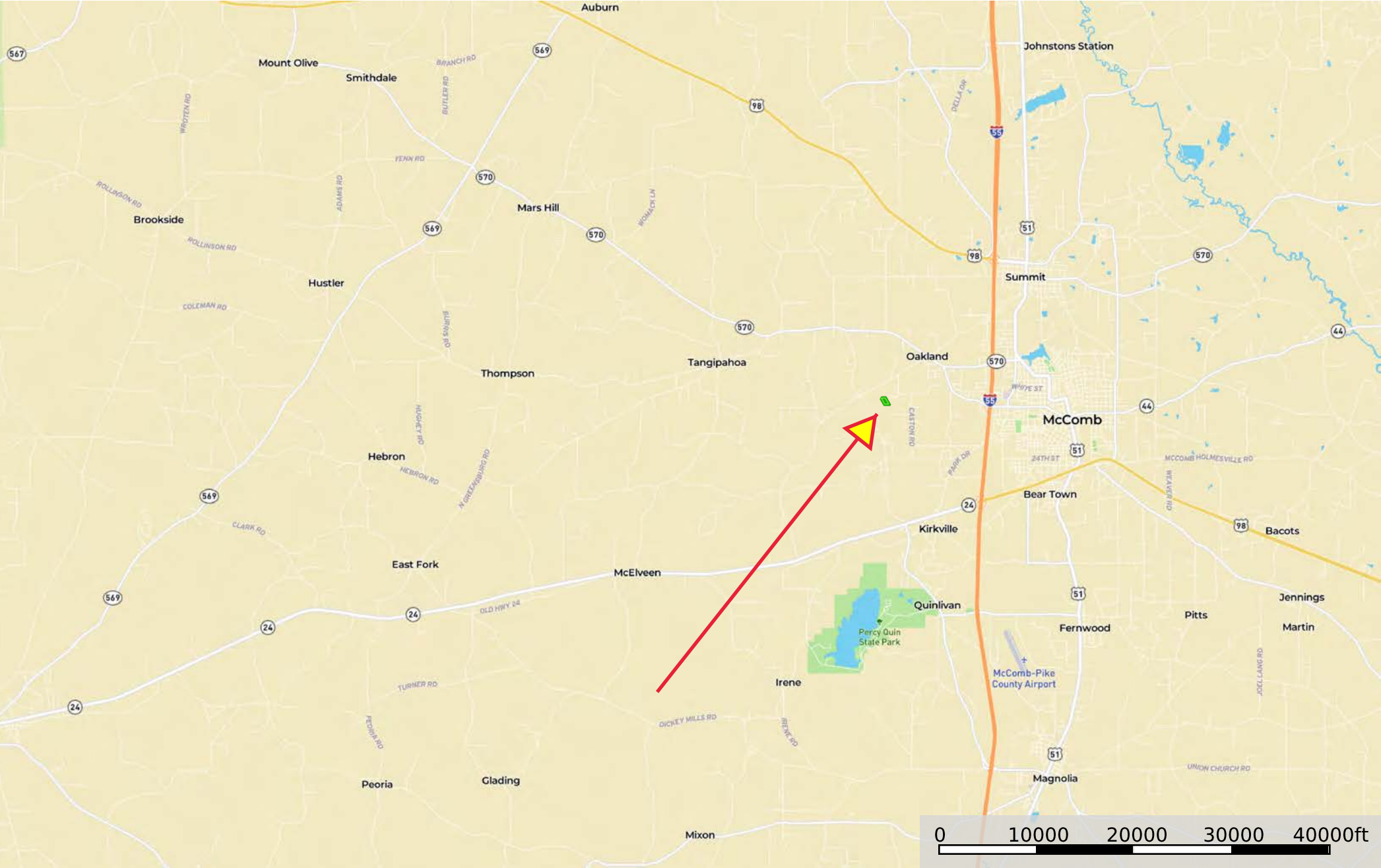

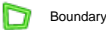
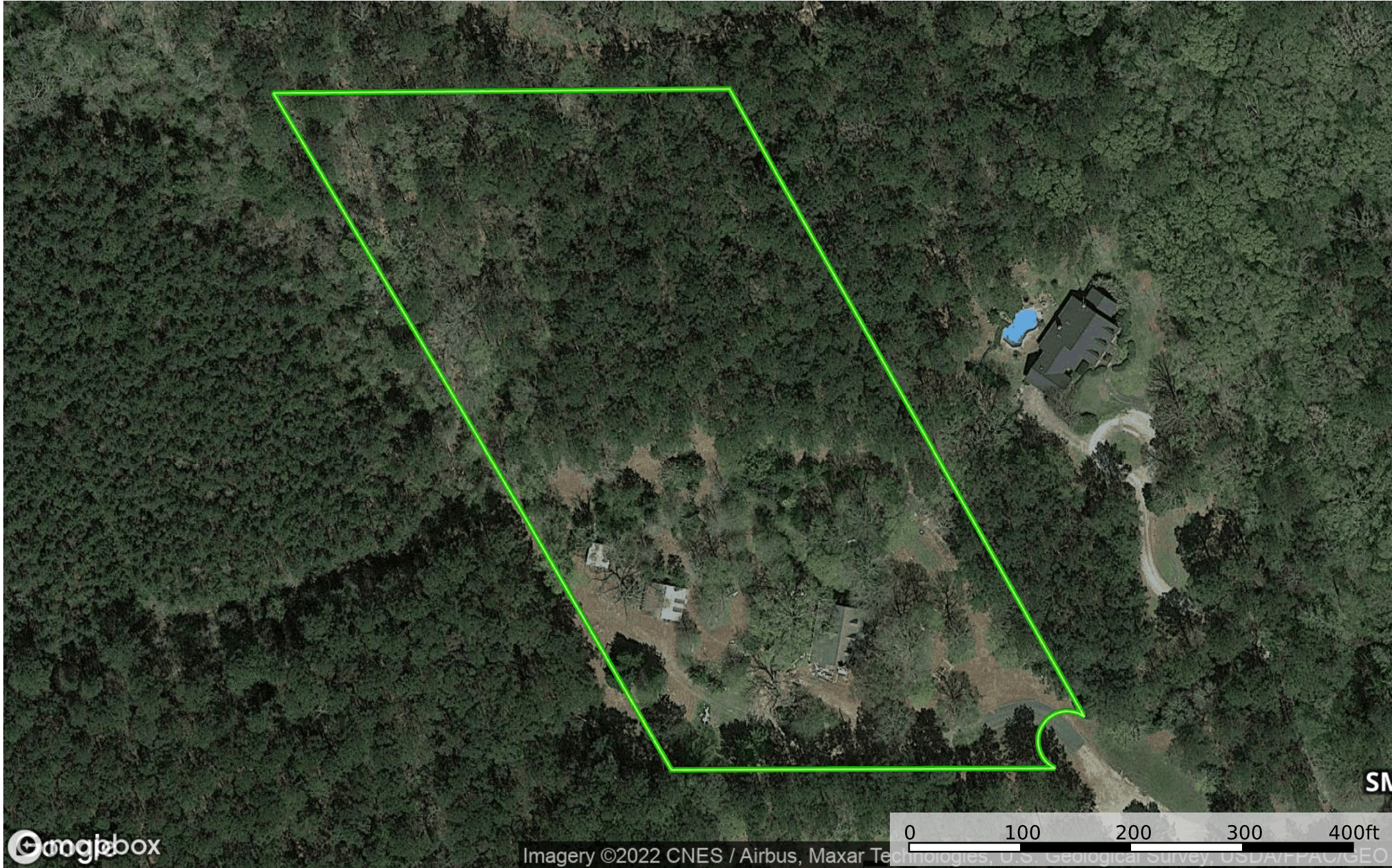
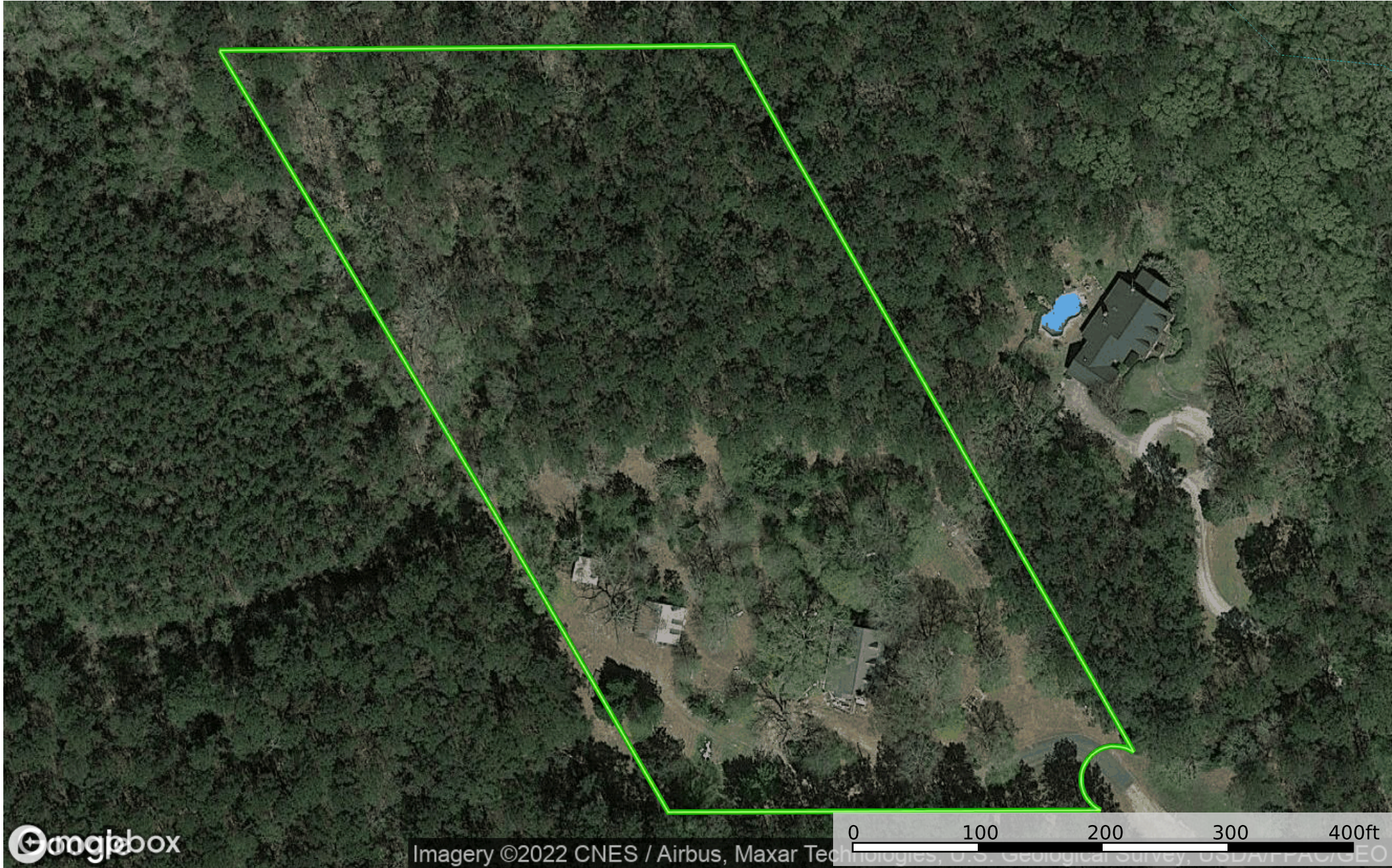


SCH - 1001 Smith Lane (McComb, MS)
Pike County, Mississippi, 5.85 AC +/-

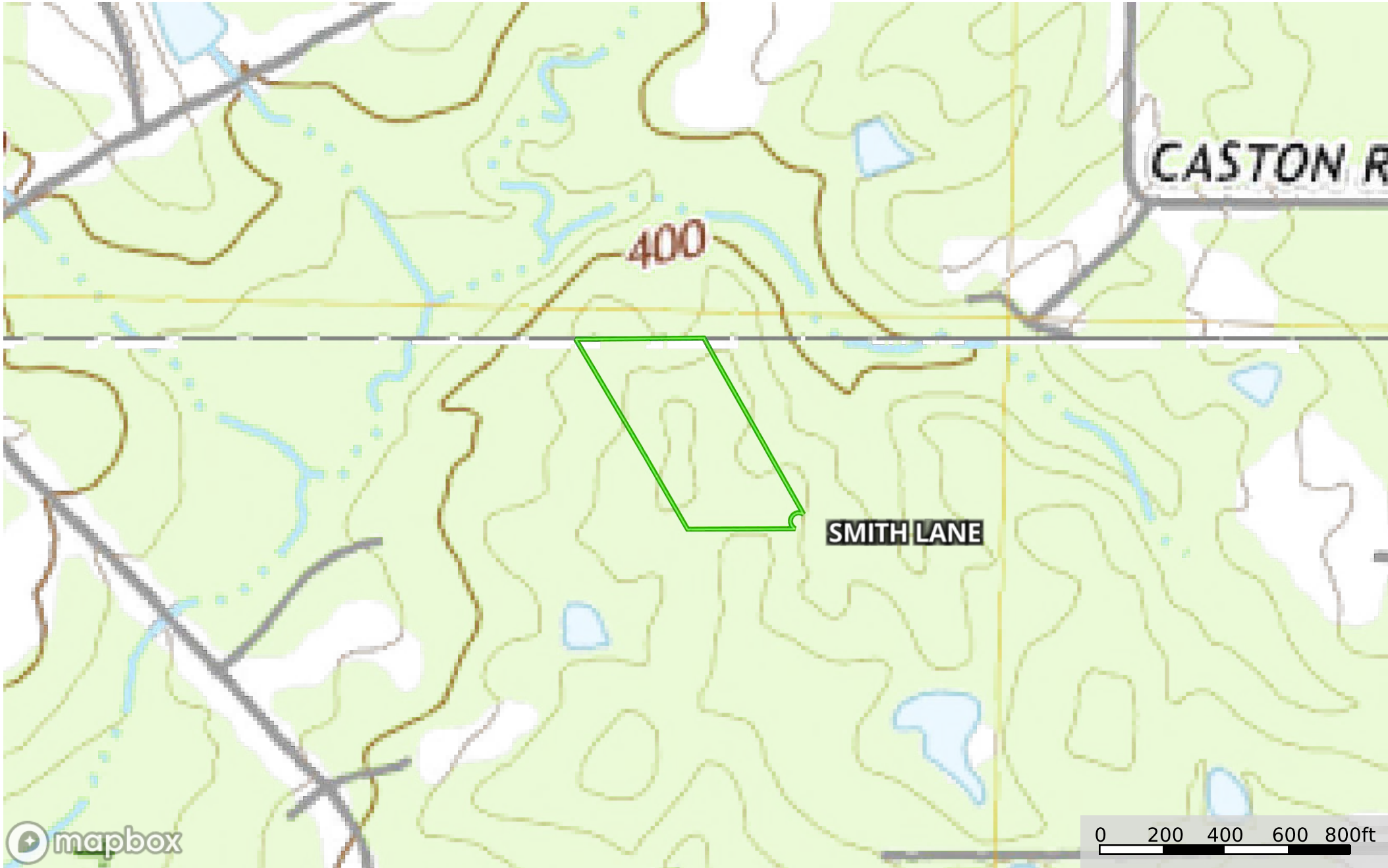


 Boundary

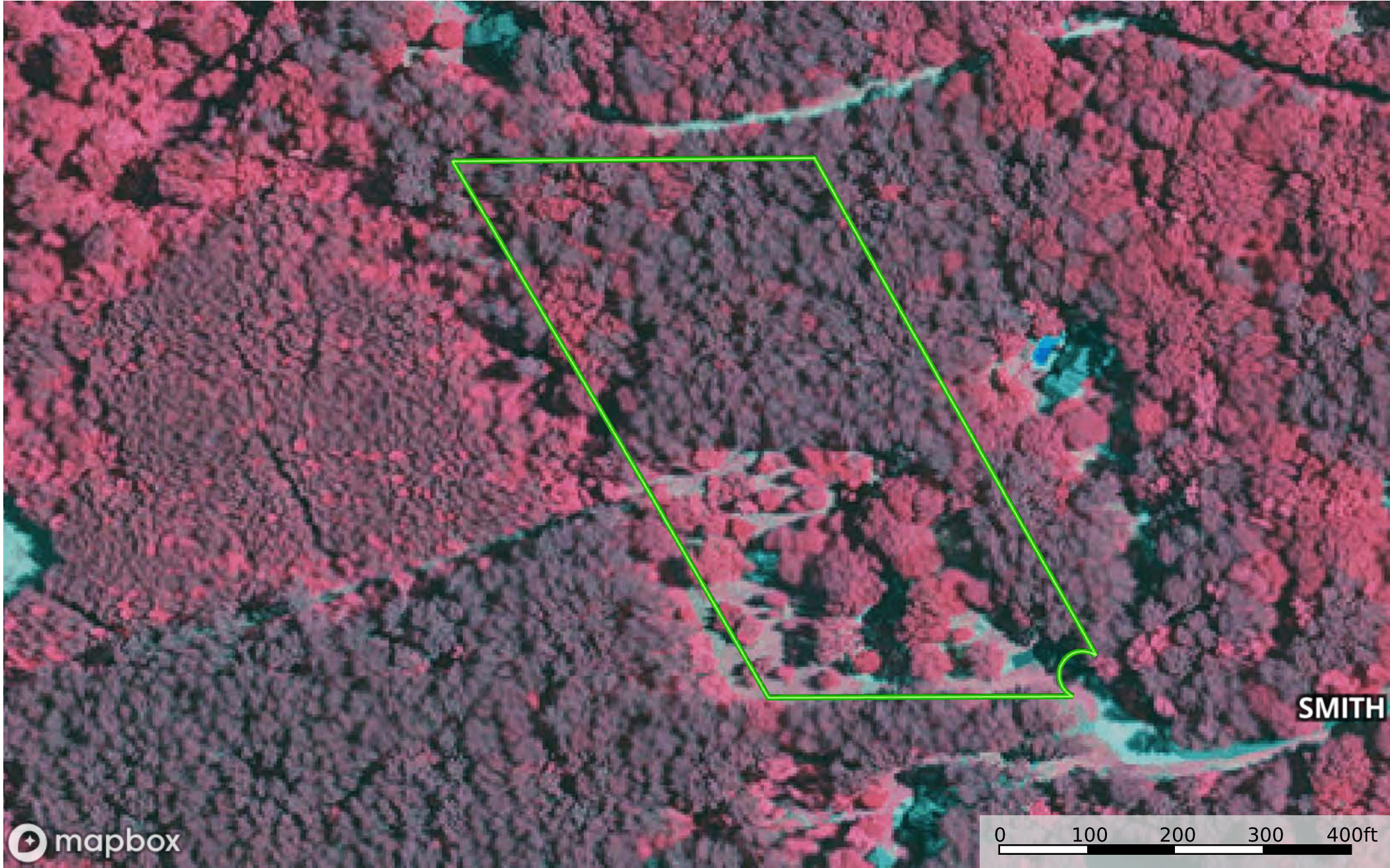






-  Boundary
-  100 Year Floodplain
-  500 Year Floodplain
-  Floodway
-  Special
-  Unmapped/
Not Included
-  Stream,
Intermittent
-  River/Creek
-  Water Body



Boundary



mapbox

 Boundary