

Blossom Bluff
Dierks, AR 71852

\$356,441
88.010± Acres
Howard County



Blossom Bluff
Dierks, AR / Howard County

SUMMARY

City, State Zip

Dierks, AR 71852

County

Howard County

Type

Hunting Land, Recreational Land, Timberland

Latitude / Longitude

34.114953 / -93.863714

Acreage

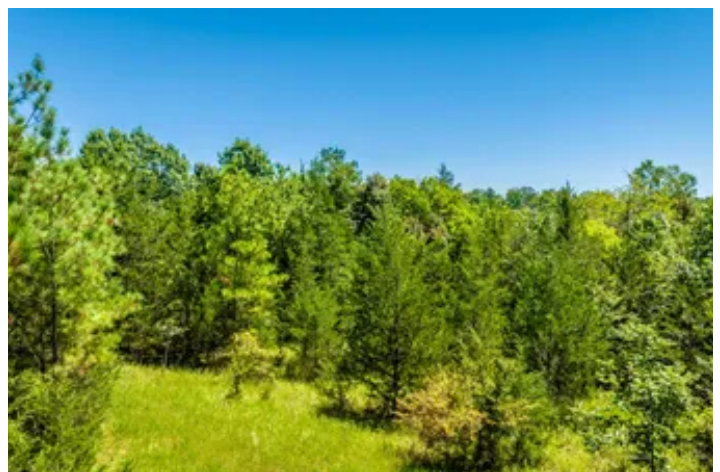
88.010

Price

\$356,441

Property Website

<https://www.forestryrealestate.com/property/blossom-bluff-howard-arkansas/41698/>



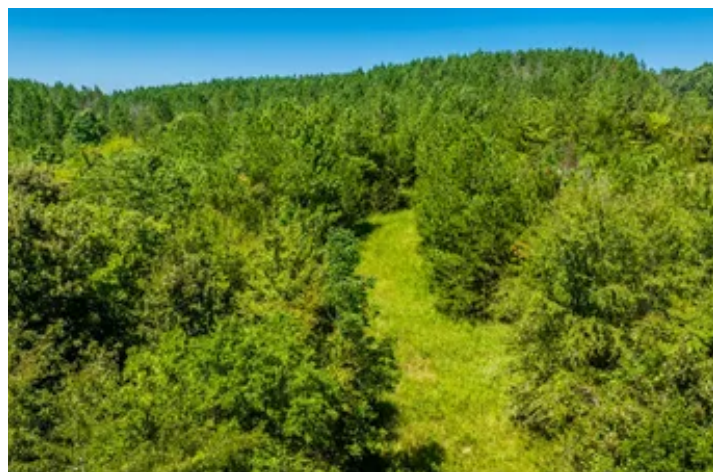
Blossom Bluff
Dierks, AR / Howard County

PROPERTY DESCRIPTION

What a gem! If you are looking for a perfect deer hunting and turkey hunting or just a super recreational property to build a home or cabin on, you found it! This property boasts a healthy pine plantation planted in 2007 and is ready to be thinned for immediate return on your investment. A couple of small creeks are lined with mature hardwoods creating habitat and attractive features. This land for sale fronts paved Gum Tree Road, and electricity is available. Not far from Murfreesboro, AR, Diamond Mine State Park, and Lake Greeson. This one is a must-see.



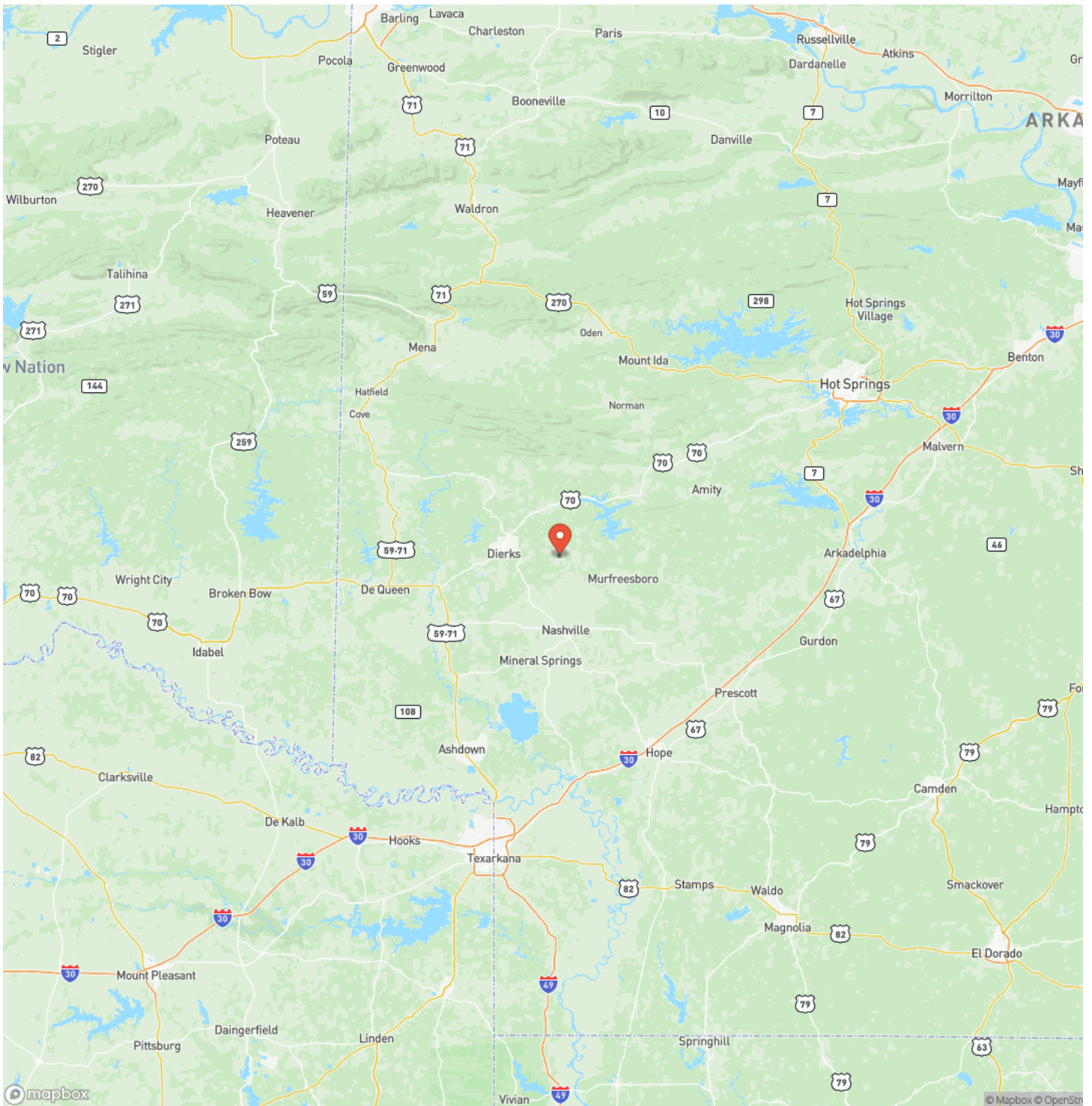
Blossom Bluff
Dierks, AR / Howard County



Locator Map



Locator Map



Satellite Map



LISTING REPRESENTATIVE

For more information contact:



Representative

Brian DePriest

Mobile

(903) 556-6375

Office

(501) 219-8600

Email

bdepriest@forestryrealestate.com

Address

216 Olive St.

City / State / Zip

Texarkana, AR 71854

NOTES

[illegible]

[illegible]

MORE INFO ONLINE:
www.forestryrealestate.com

DISCLAIMERS

Information in this brochure is provided solely for information purposes and does not constitute an offer to sell or advertise real estate outside the states in which broker or agent licensed. The information presented has been obtained from sources deemed to be reliable, but is not guaranteed or warranted by the agent, broker, or the sellers of these properties. This offering is subject to errors, omissions, prior sale, price change, correction or withdrawal from the market without notice. All references to age, square footage, income, expenses, acreage, carrying capacity, and land classification, etc. are approximate. Prospective buyers are chargeable with and expected to conduct their own independent investigation of the information and the property and to rely only on those results. Sellers reserve the right to accept or reject any and all offers without liability to any buyer or cooperating broker.

Maps are provided for illustration purposes only, the accuracy is not warranted. Parcels on interactive maps are not adjusted to match aerial backgrounds. This information is for reference purposes only and is not a legal document. Data maps contain errors. The seller and seller's agent are making known to all potential buyers that there may be variations between the location of the existing fence lines and the legal description of the deeded property. Seller and seller's agent make no warranties with regard to the location of the fence lines in relationship to the deeded property lines, nor does the Seller make any warranties or representations with regard to the specific acreage contained within the fenced property lines. Seller is selling the property in an "as is" condition, which includes the location of the fences as they exist. Boundaries shown on the accompanying maps are approximate, based on county parcel data. The maps are not to scale. The accuracy of the maps is not guaranteed. Prospective buyers are encouraged to verify fence lines, deeded property lines and acreages using a licensed surveyor at their own expense.



Davis DuBose Knight Forestry & Real Estate
1100 Asbury Rd.
Little Rock, AR 72211
(501) 219-8600
www.forestryrealestate.com

