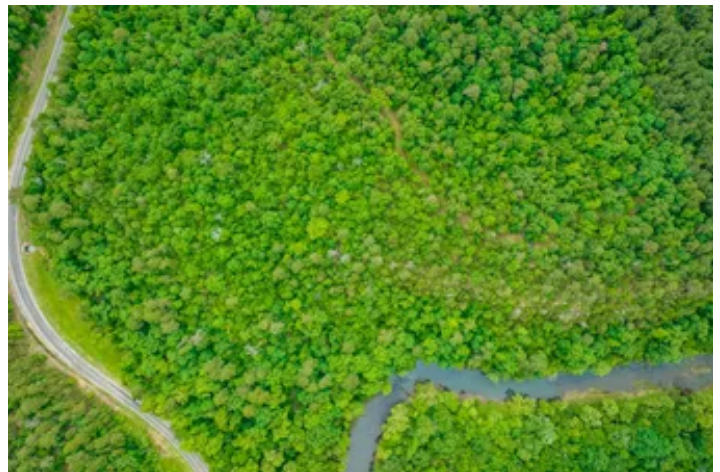


**Hinds Bluff River View - 10 Acres**  
Murfreesboro, AR 71958

**\$160,000**  
10± Acres  
Pike County





## Hinds Bluff River View - 10 Acres

### Murfreesboro, AR / Pike County

---

#### **SUMMARY**

##### **City, State Zip**

Murfreesboro, AR 71958

##### **County**

Pike County

##### **Type**

Undeveloped Land, Riverfront, Lot

##### **Latitude / Longitude**

34.127231 / -93.691519

##### **Acreage**

10

##### **Price**

\$160,000

##### **Property Website**

<https://www.forestryrealestate.com/property/hinds-bluff-river-view-10-acres-pike-arkansas/40897/>



## Hinds Bluff River View - 10 Acres Murfreeshboro, AR / Pike County

---

### **PROPERTY DESCRIPTION**

10-acre riverfront lot and breath-taking bluff views

Frontage on Highway 19 with utilities available

Excellent trout fishing area

SWAHA Marina at Lake Greeson less than 3 miles away

Several potential cabin sites

Convenient to Murfreeshboro, AR

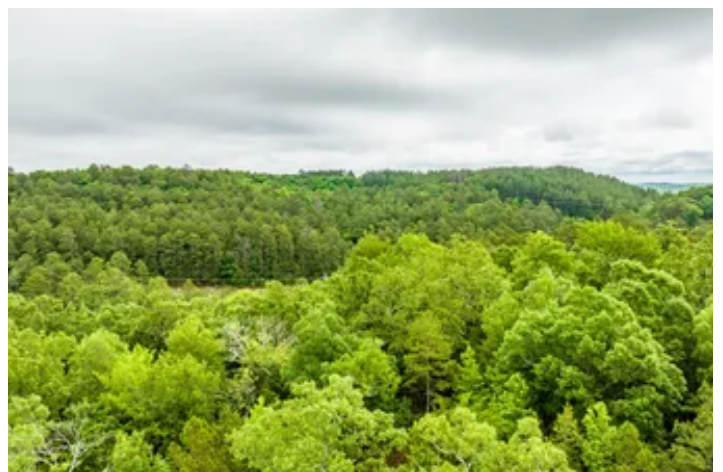
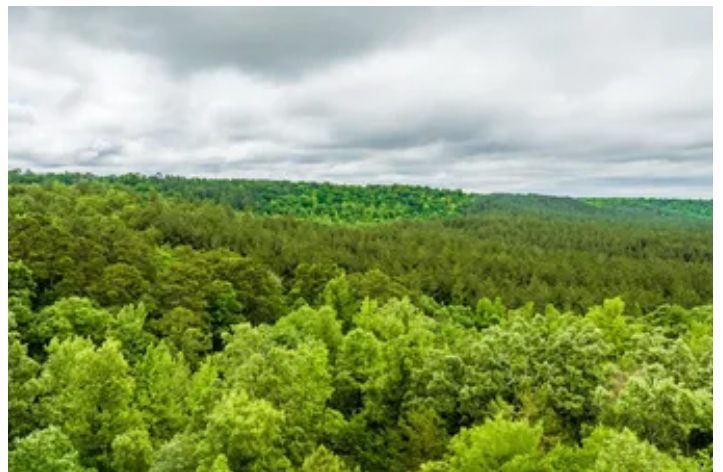
Have you been looking for a cabin site with access to a beautiful clear river? What about land you could develop that is also close to a gorgeous lake and marina just down the road? Your search may just be over! Located in Pike County AR this 10-acre riverfront land for sale in Arkansas is near Murfreeshboro and a thousand miles from the hustle and bustle of everyday life. The property has frontage on Highway 19 with electric and water available. Picturesque mountain views, access to the Little Missouri River, and less than 3 miles to SWAHA Marina on Lake Greeson make this unique property shine! If you enjoy trout fishing, over 40,000 rainbow trout are released in this stretch of the Little Missouri River and the Hinds Bluff landing area is at your back door. If you have been looking for lake property for sale or river property for sale, do not hesitate- call about this stunning property. The area around Lake Greeson and the Little Missouri River is booming and opportunities like this do not come along very often that carry this type of potential. Call Brian DePriest today at [903.556.6375](tel:903.556.6375) to learn more. Note that the property does not front the river but is accessed through small, narrow piece of AR Game and Fish ownership. Potential cabin site here with gorgeous views of the river, Additional land may be available.



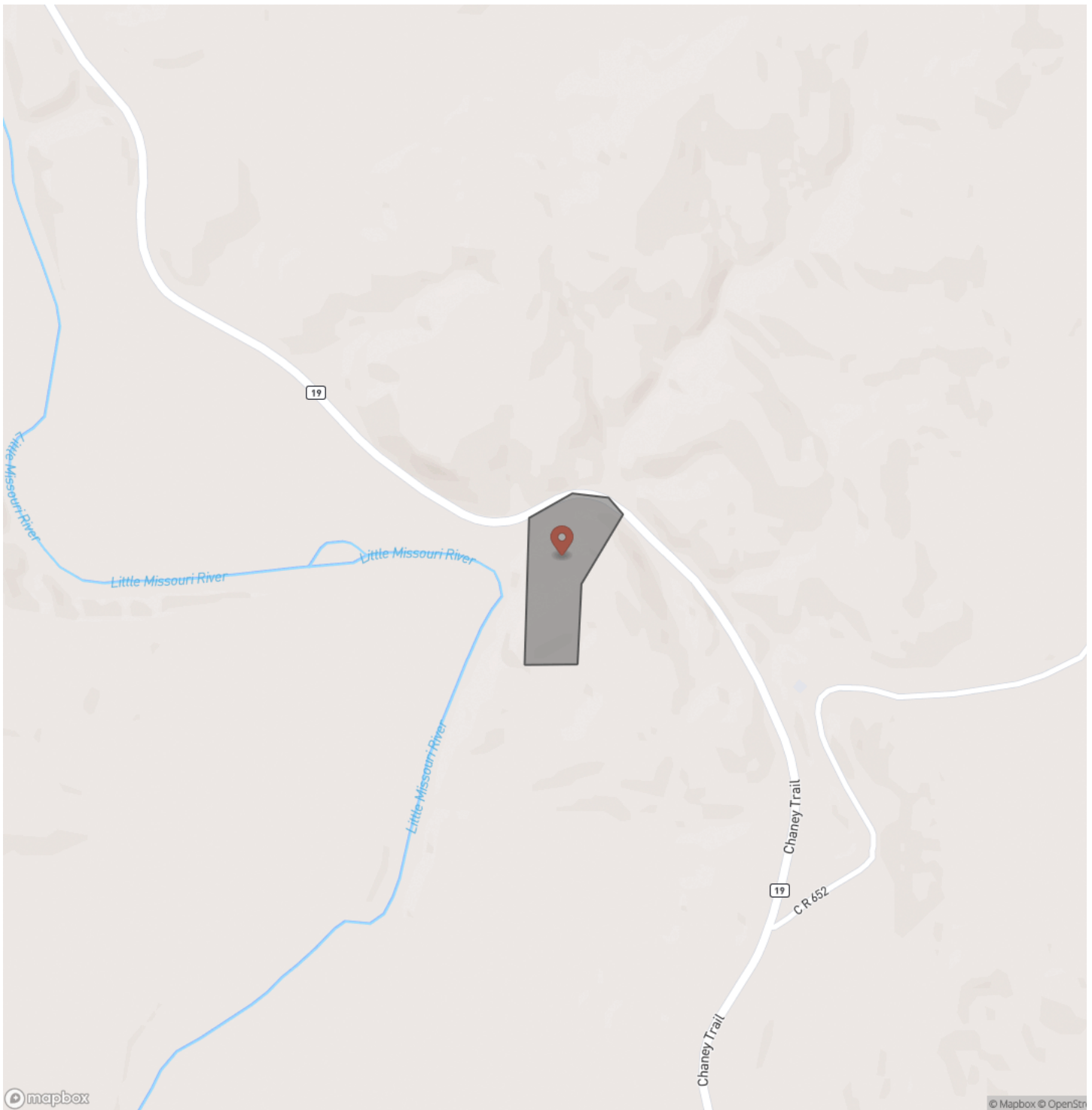


**Hinds Bluff River View - 10 Acres**  
**Murfreesboro, AR / Pike County**

---

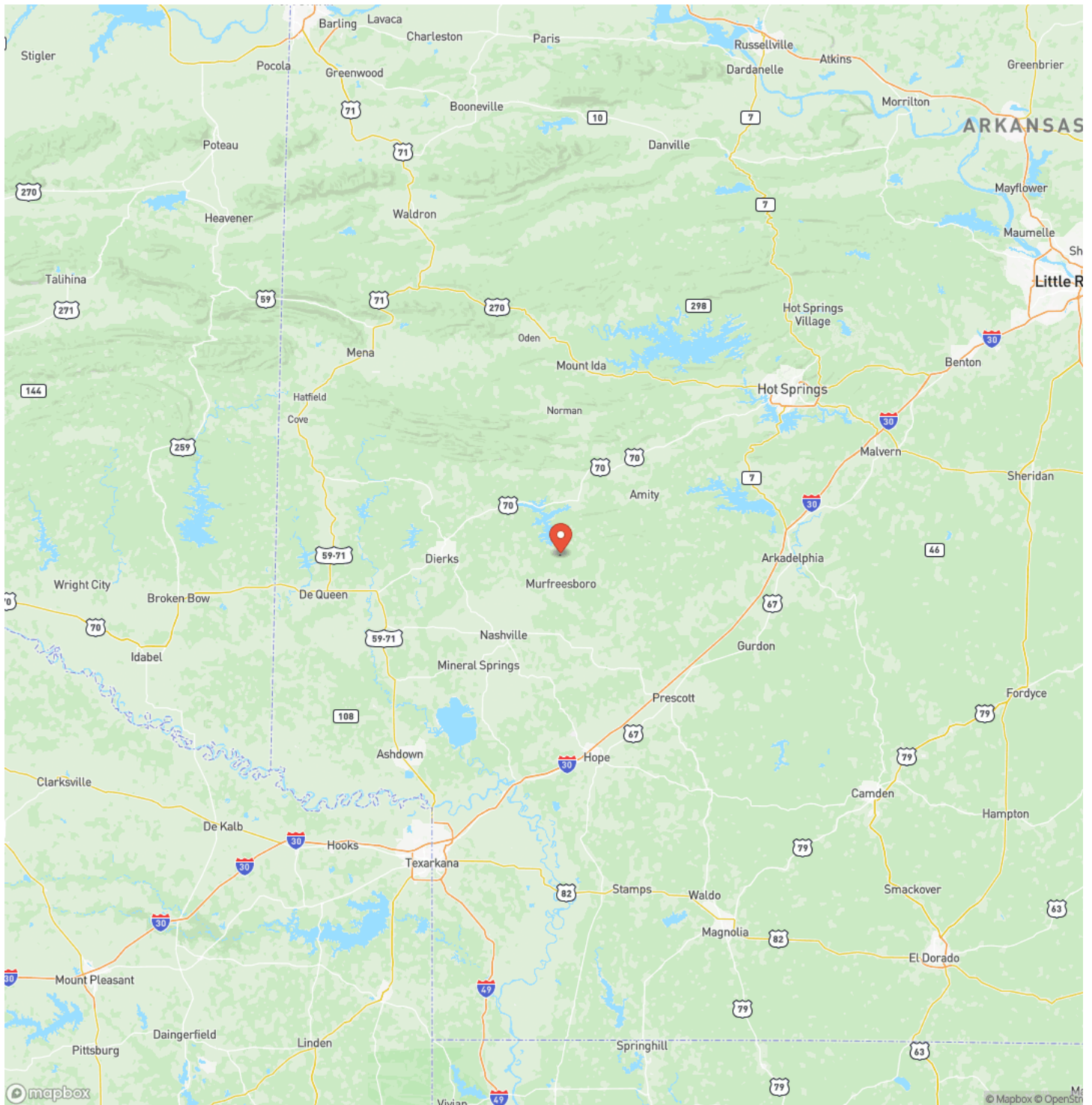


## Locator Map





## Locator Map





## Satellite Map



## Hinds Bluff River View - 10 Acres Murfreesboro, AR / Pike County

## LISTING REPRESENTATIVE

**For more information contact:**



### Representative

Brian DePriest

## Mobile

(903) 556-6375

## Office

(501) 219-8600

## Email

bdepriest@forestryrealestate.com

**Address**

216 Olive St.

## City / State / Zip

Texarkana, AR 71854

## NOTES

[illegible]



## This image shows a single sheet of white paper with horizontal ruling lines. The lines are evenly spaced and run across the width of the page. There are no margins, text, or other markings on the paper.



## **DISCLAIMERS**

Information in this brochure is provided solely for information purposes and does not constitute an offer to sell or advertise real estate outside the states in which broker or agent licensed. The information presented has been obtained from sources deemed to be reliable, but is not guaranteed or warranted by the agent, broker, or the sellers of these properties. This offering is subject to errors, omissions, prior sale, price change, correction or withdrawal from the market without notice. All references to age, square footage, income, expenses, acreage, carrying capacity, and land classification, etc. are approximate. Prospective buyers are chargeable with and expected to conduct their own independent investigation of the information and the property and to rely only on those results. Sellers reserve the right to accept or reject any and all offers without liability to any buyer or cooperating broker.

Maps are provided for illustration purposes only, the accuracy is not warranted. Parcels on interactive maps are not adjusted to match aerial backgrounds. This information is for reference purposes only and is not a legal document. Data maps contain errors. The seller and seller's agent are making known to all potential buyers that there may be variations between the location of the existing fence lines and the legal description of the deeded property. Seller and seller's agent make no warranties with regard to the location of the fence lines in relationship to the deeded property lines, nor does the Seller make any warranties or representations with regard to the specific acreage contained within the fenced property lines. Seller is selling the property in an "as is" condition, which includes the location of the fences as they exist. Boundaries shown on the accompanying maps are approximate, based on county parcel data. The maps are not to scale. The accuracy of the maps is not guaranteed. Prospective buyers are encouraged to verify fence lines, deeded property lines and acreages using a licensed surveyor at their own expense.





---

**Davis DuBose Knight Forestry & Real Estate**  
1100 Asbury Rd.  
Little Rock, AR 72211  
(501) 219-8600  
[www.forestryrealestate.com](http://www.forestryrealestate.com)

---

