

Sabinoso Ranch



Trujillo, New Mexico

M4RANCHGROUP.COM

(970) 944-4444 | RANCHES@M4RANCHGROUP.COM



\$2,482,000 - 3,035± Acres

Presented By



DEDICATED RANCH BROKER



SETH CRAFT - BROKER ASSOCIATE
970-787-0864
SETH@M4RANCHGROUP.COM

DAN MURPHY - BROKER
970-209-1514
DAN@M4RANCHGROUP.COM



All information provided is deemed reliable but is not guaranteed and should be independently verified. M4 Ranch Group and its affiliates makes no representation or warranties as to the accuracy, reliability, or completeness of the information, text, property boundaries, graphic links or other items contained in any web site, print, or otherwise linked to this publication.

M4RANCHGROUP.COM

(970) 944-4444 | RANCHES@M4RANCHGROUP.COM

The Ranch



This vast piece of property with deep canyons offers you solitude in Northeastern New Mexico. Sabinoso Ranch encompasses 3,035± acres, with giant Ponderosas and a mixture of Juniper and Pinyon Pines. The ranch's elevation starts at 5,700 feet and expands up to 6,400 feet creating deep crevasses with seasonal creeks and springs.

Located in game management unit 42, this Northeastern New Mexico ranch for sale qualifies for landowner tags yearly. The 3,035± acres of land, locks another 1,500± acres of state land and another 20,000± acres in the Sabinoso Wilderness. This wilderness includes big canyon walls and mesa tops that support grasslands historically known for their expansive cattle ground. Sabinoso Wilderness has elk, deer, and wild turkeys; it is surrounded by private land.

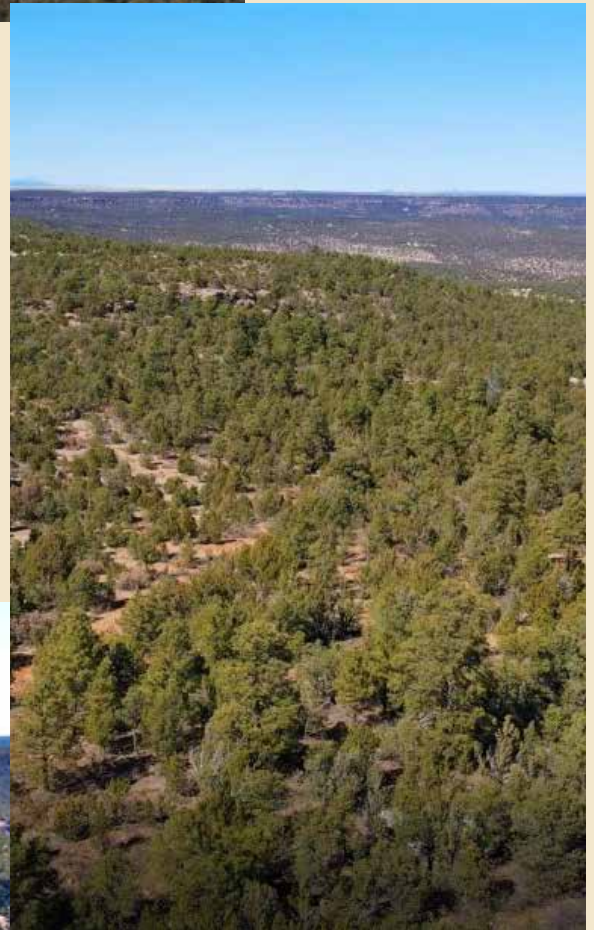
Located within about an hour's drive from Las Vegas, New Mexico, providing shopping and restaurants. Las Vegas, New Mexico is like stepping back in time...a place where "landmarks, legends and lore" come to life in New Mexico's favorite and best preserved outdoor architectural museums and a national treasure with 5 Main Street historic districts and over 900 buildings listed on the National Registry of Historic Places.



M4RANCHGROUP.COM

(970) 944-4444 | RANCHES@M4RANCHGROUP.COM

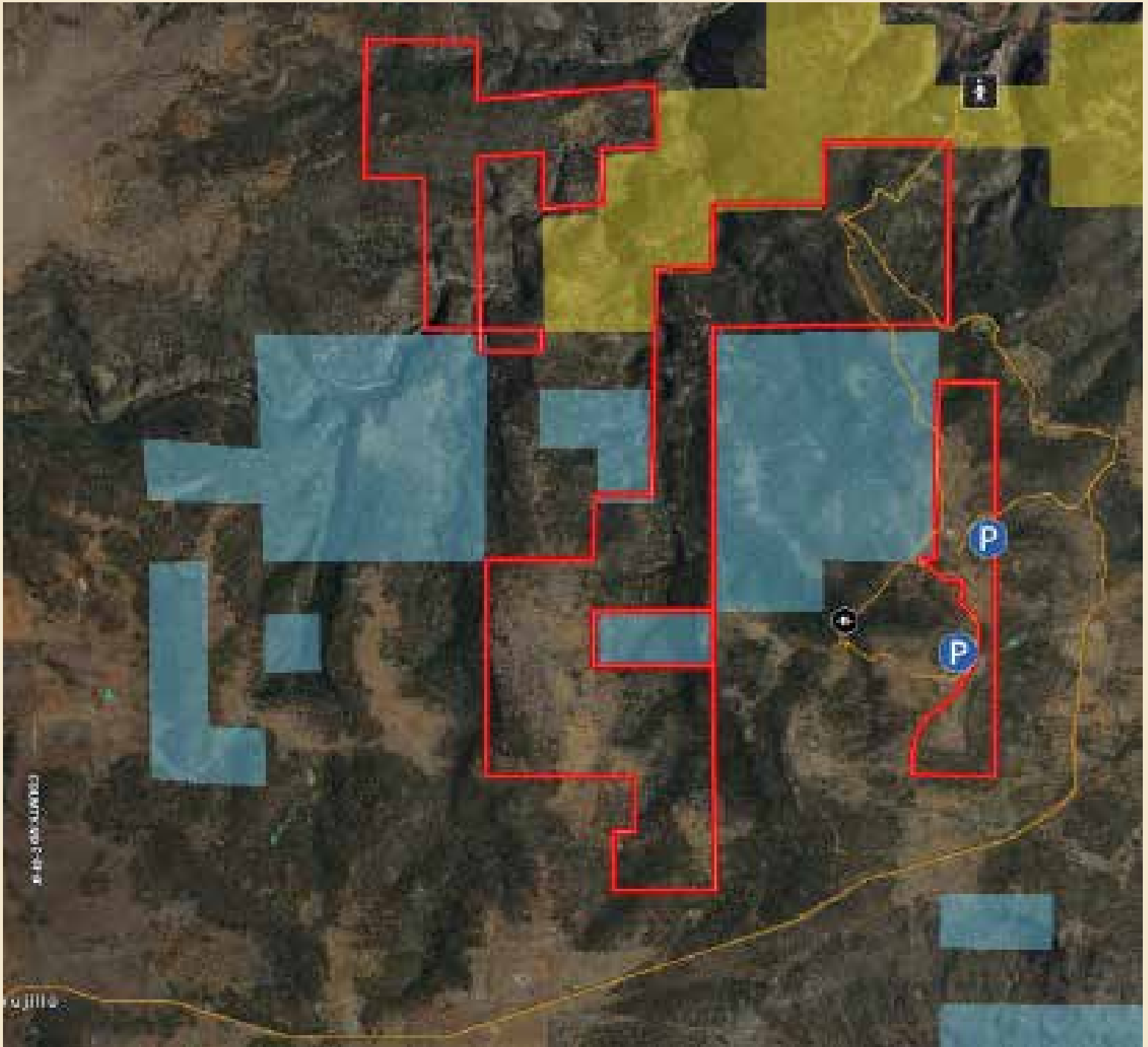
Property



M4RANCHGROUP.COM

(970) 944-4444 | RANCHES@M4RANCHGROUP.COM

Location



Ranch acreage outlined in red.

M4RANCHGROUP.COM

(970) 944-4444 | RANCHES@M4RANCHGROUP.COM

Airports

Airport	Kind of Service	Miles from Las Vegas, NM
Las Vegas Municipal Airport	Domestic	6± Miles
Santa Fe Municipal Airport	Domestic	49± Miles
Albuquerque International Sunport	Domestic/International	126± Miles

Climate

Las Vegas, New Mexico

	Jan	Feb	Mar	Apr	May	Jun
Average high in °F:	46	49	56	63	71	81
Average low in °F:	19	22	27	33	41	49
Av. precipitation in inch:	0.39	0.35	0.79	0.98	1.85	2.17
	Jul	Aug	Sep	Oct	Nov	Dec
Average high in °F:	83	81	75	66	54	47
Average low in °F:	53	52	46	37	26	20
Av. precipitation in inch:	3.31	3.62	2.13	1.22	0.79	0.51

<https://www.usclimatedata.com/>

GMU 42



M4RANCHGROUP.COM

(970) 944-4444 | RANCHES@M4RANCHGROUP.COM

Surrounding Attributes

MONTEZUMA HOT SPRINGS

Montezuma, NM

Six miles northwest of Las Vegas, the warm, healing, mineral-charged pools of Montezuma Hot Springs are one of Mother Nature's myriad blessings found in northern New Mexico. Several small soaking pools, range from very hot to warm, in addition to larger rock pools christened the "lobster pot" (a very hot 120°), and "Africa" (102.7°) for its familiar shape.

PECOS NATIONAL STATE PARK

Rowe, NM

In the midst of piñon, juniper, and ponderosa pine woodlands of the Sangre de Cristo Mountains not far from Santa Fe, the remains of Indian pueblos stand as meaningful reminders of people who once prevailed. Pecos National Historical Park helps visitors explore the cultural exchange and geographic features that played such crucial roles in the rich history of the Pecos Valley.

STORRIE LAKE STATE PARK

Las Vegas, NM

The man-made reservoir of Storrie Lake is a recreational mecca for boating and windsurfing enthusiasts. Storrie Lake, located six miles north of Las Vegas on Hwy 518, is a popular lake for people from around New Mexico with consistent winds, warm waters and few insects. On-site boat and windsurfing rentals are not available but can be arranged in Santa Fe or Albuquerque.



DWAN LIGHT SANCTUARY

Las Vegas, NM

Located on the campus of the United World College, the Dwan Light Sanctuary uses prisms instead of windows to transform the light that enters the building into a lattice of rainbows.

The peaceful room was created by Virginia Dwan as a multi-purpose space for meditation, reflection, or even religious practice. Eschewing a singular purpose that might make the sanctuary less than welcoming for some people, the space allows visitors to turn the stark white space into their own escape. The open layout is completely unadorned save for the giant prisms built into the ceiling and apse of the building. With no other decoration to distract the eye guests can simply meditate on the rainbows that are projected on the walls and floors as natural light passes into the room. Many universities offer quiet rooms and study halls, but none may be so artful or forward thinking as the Dwan sanctuary.

CONCHAS LAKE

New Mexico

Conchas Lake is a 25-mile long reservoir in northeastern New Mexico, behind Conchas Dam on the Canadian River. The lake has an elevation of 4,200 feet and a surface area of 9,600 acres. Conchas Dam was completed in 1939 by the United States Army Corps of Engineers. Adjacent to the lake is Conchas Lake State Park, which is divided into two separate areas, north and south. The state park has nine public boat ramps: five in the north area and four in the south area. The lake contains walleye, largemouth bass, White bass, Shad, Flathead catfish, channel catfish, bluegill, and crappie. The south area is located between the town of Conchas and Hooverville. Visitors can access the lake via New Mexico State Road 104, at mile marker 75, 29 miles northwest of Tucumcari and 75 miles southeast of Las Vegas.

Sabinoso Ranch

Smaller Offerings of the Ranch

Sabinoso 464 Ranch - 464± Acres - \$371,000
Sabinoso 483 Ranch - 483± Acres - \$386,000
Sabinoso 661 Ranch - 661± Acres - \$529,000
Sabinoso 987 Ranch - 987± Acres - \$790,000



M4RANCHGROUP.COM

(970) 944-4444 | RANCHES@M4RANCHGROUP.COM