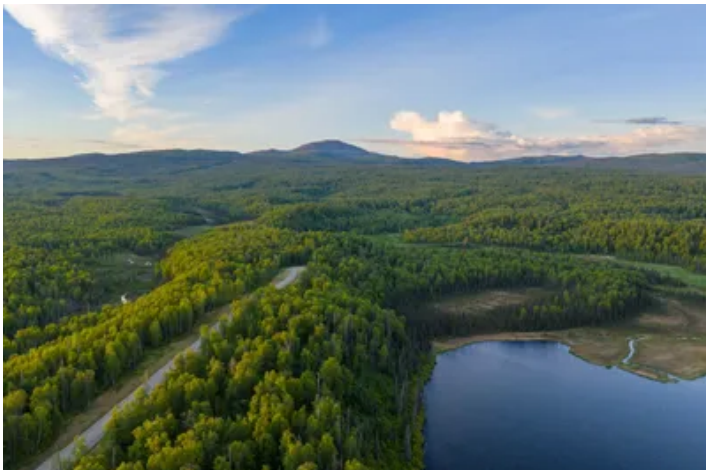


Unit 102 Baldy Lake Airpark  
BALDY LK ARPK Lot 102  
Talkeetna, AK 99676

**\$190,000**  
6.520± Acres  
Matanuska-Susitna County



**Unit 102 Baldy Lake Airpark  
Talkeetna, AK / Matanuska-Susitna County**

---

**SUMMARY**

**Address**

BALDY LK ARPK Lot 102

**City, State Zip**

Talkeetna, AK 99676

**County**

Matanuska-Susitna County

**Type**

Recreational Land, Undeveloped Land, Lakefront, Lot

**Latitude / Longitude**

62.2418 / -149.92259

**Acreage**

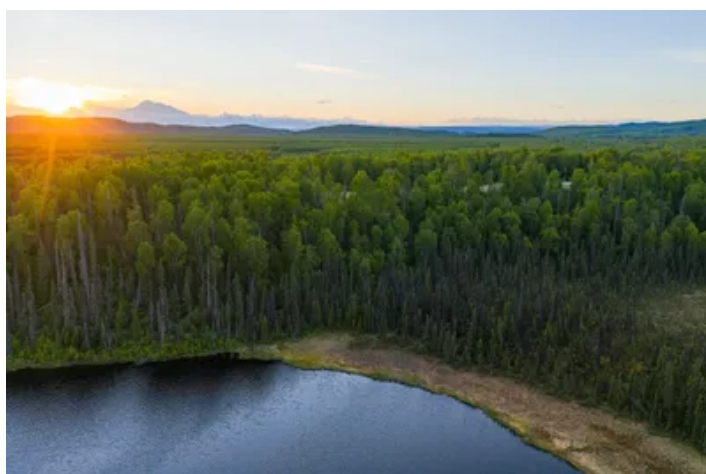
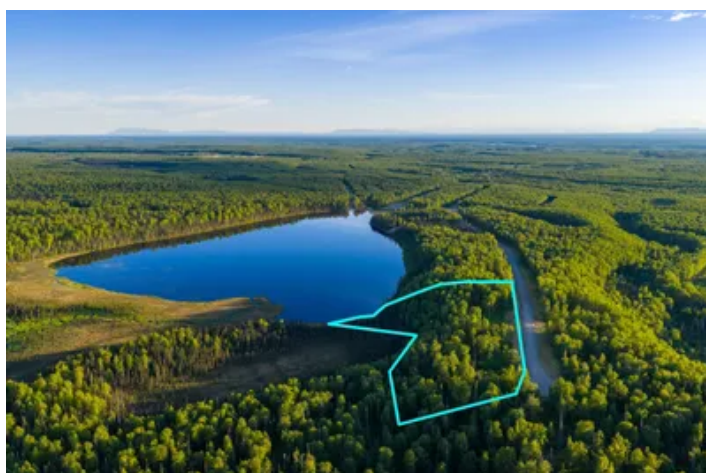
6.520

**Price**

\$190,000

**Property Website**

<https://arrowheadlandcompany.com/property/unit-102-baldy-lake-airpark-matanuska-susitna-alaska/111818/>



## Unit 102 Baldy Lake Airpark Talkeetna, AK / Matanuska-Susitna County

---

### **PROPERTY DESCRIPTION**

Introducing this beautiful 6.52 +/- acre waterfront property in Baldy Lake Airpark, where breathtaking scenery, aviation, and year-round recreation come together! This exceptional parcel offers frontage on Baldy Lake, providing the opportunity to enjoy peaceful waterfront living while surrounded by some of Southcentral Alaska's most spectacular mountain views. Wake up each morning to stunning views of the Talkeetna Mountains, while the majestic Alaska Range creates an unforgettable backdrop just across the road. Whether you envision a private fly-in cabin, year-round home, hangar retreat, or recreational getaway, this property offers the perfect balance of privacy, natural beauty, and accessibility. With ample space to build and direct access to Baldy Lake, you'll enjoy a setting that's ideal for relaxing, fishing, paddling, or simply taking in the incredible Alaska landscape. Located near Talkeetna and within easy reach of Wasilla and Anchorage, Baldy Lake Airpark is a one-of-a-kind aviation community surrounded by some of Alaska's best outdoor recreation. Spend your days fishing nearby lakes and rivers, exploring miles of ATV and snowmachine trails, hiking, or enjoying the abundant wildlife that makes this area so special. From the airpark, you can access Baldy Mountain by four wheeler or side-by-side, opening the door to exceptional hunting, breathtaking scenery, and endless opportunities to explore Alaska's rugged backcountry. Aviation enthusiasts will appreciate the community's 2,000 +/- foot private airstrip, with the taxiway system providing convenient access throughout the development. Baldy Lake also accommodates floatplanes, allowing you to fly directly to your waterfront property and continue exploring Alaska's countless remote destinations. With more than 200 +/- acres of common area, residents enjoy additional room to recreate while being part of one of Alaska's premier private aviation communities. The combination of lake frontage, incredible mountain views, and aviation access makes this property one of the most desirable opportunities within Baldy Lake Airpark. Whether you're looking for a peaceful waterfront escape, a year-round residence, an investment property, or a place where your passion for flying and Alaska's outdoors become part of everyday life, this exceptional 6.52 +/- acre property offers endless possibilities. Owner financing is available with just 20% down, making it easier than ever to own waterfront property in one of Alaska's most unique recreational and aviation communities. All showings are by appointment only. If you would like more information or would like to schedule a private viewing please contact Jared Prewett at [\(907\) 203-5754](tel:9072035754).

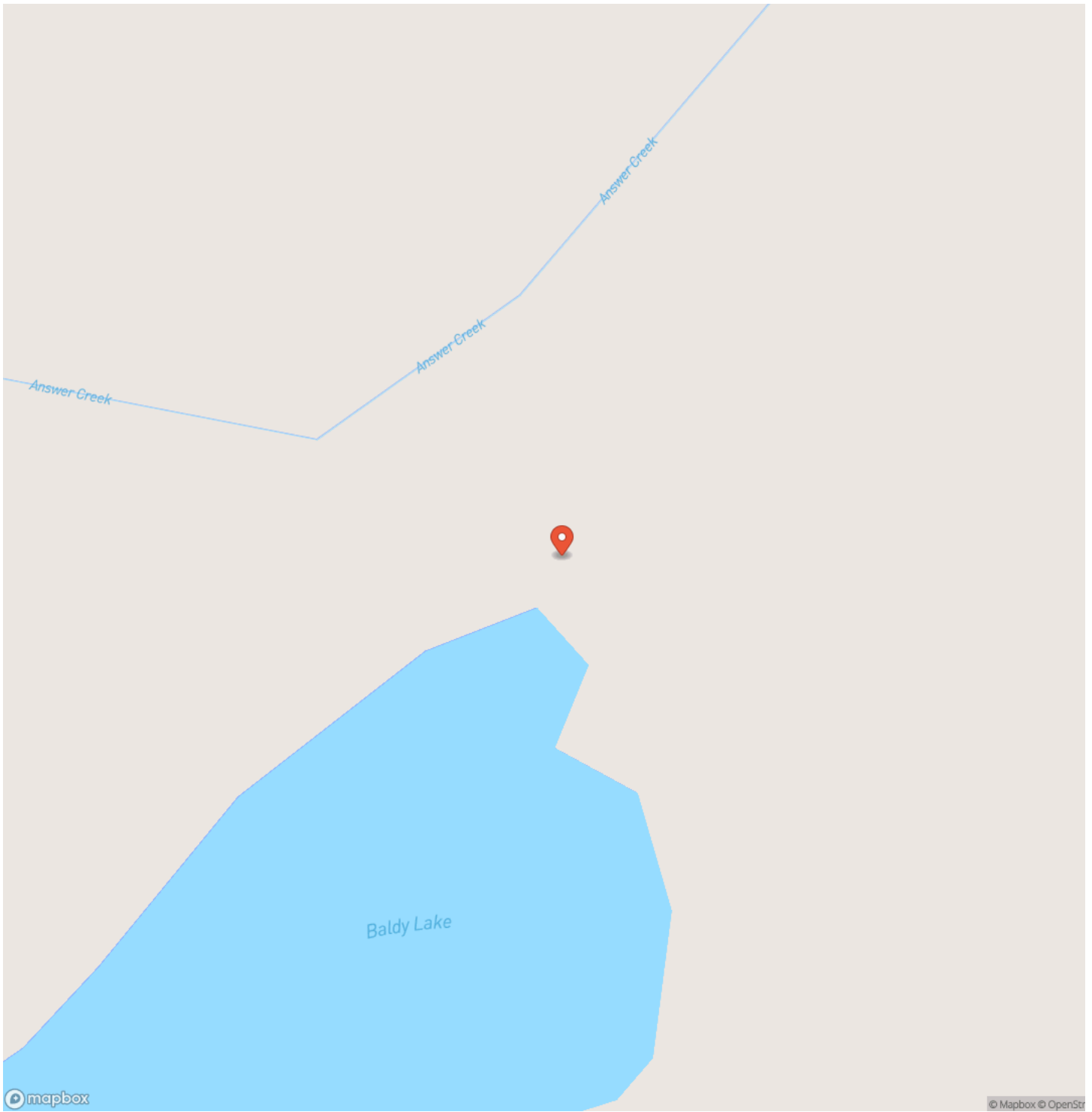
Disclaimer: The boundary lines shown are approximate and are provided for general reference only. Arrowhead Land Company makes no representations or warranties, express or implied, as to the accuracy, completeness, or reliability of those property lines. Buyers are advised to obtain an independent survey to verify exact property boundaries.

Unit 102 Baldy Lake Airpark  
Talkeetna, AK / Matanuska-Susitna County

---



## Locator Map



## Locator Map



## Satellite Map







## **DISCLAIMERS**

Information in this brochure is provided solely for information purposes and does not constitute an offer to sell or advertise real estate outside the states in which broker or agent licensed. The information presented has been obtained from sources deemed to be reliable, but is not guaranteed or warranted by the agent, broker, or the sellers of these properties. This offering is subject to errors, omissions, prior sale, price change, correction or withdrawal from the market without notice. All references to age, square footage, income, expenses, acreage, carrying capacity, and land classification, etc. are approximate. Prospective buyers are chargeable with and expected to conduct their own independent investigation of the information and the property and to rely only on those results. Sellers reserve the right to accept or reject any and all offers without liability to any buyer or cooperating broker.

Maps are provided for illustration purposes only, the accuracy is not warranted. Parcels on interactive maps are not adjusted to match aerial backgrounds. This information is for reference purposes only and is not a legal document. Data maps contain errors. The seller and seller's agent are making known to all potential buyers that there may be variations between the location of the existing fence lines and the legal description of the deeded property. Seller and seller's agent make no warranties with regard to the location of the fence lines in relationship to the deeded property lines, nor does the Seller make any warranties or representations with regard to the specific acreage contained within the fenced property lines. Seller is selling the property in an "as is" condition, which includes the location of the fences as they exist. Boundaries shown on the accompanying maps are approximate, based on county parcel data. The maps are not to scale. The accuracy of the maps is not guaranteed. Prospective buyers are encouraged to verify fence lines, deeded property lines and acreages using a licensed surveyor at their own expense.

---

**Arrowhead Land Company**  
205 E Dewey Ave  
Sapulpa, OK 74066  
(833) 873-2452  
<https://arrowheadlandcompany.com/>

---

