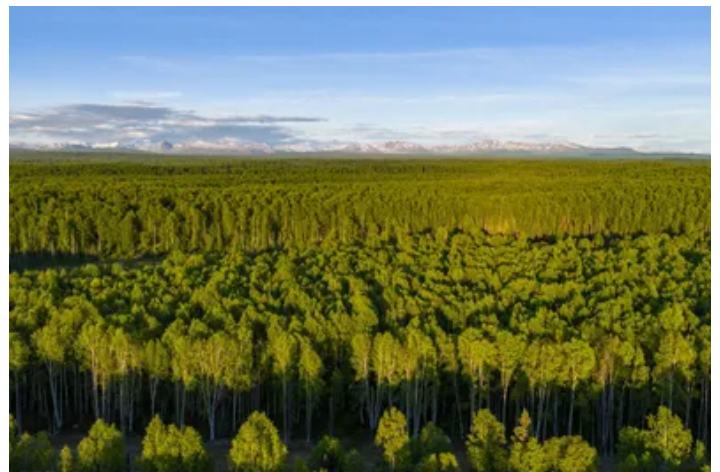


Unit 11 Baldy Lake Airpark
BALDY LK ARPK Lot 11
Talkeetna, AK 99676

\$78,200
782± Acres
Matanuska-Susitna County



Unit 11 Baldy Lake Airpark
Talkeetna, AK / Matanuska-Susitna County

SUMMARY

Address

BALDY LK ARPK Lot 11

City, State Zip

Talkeetna, AK 99676

County

Matanuska-Susitna County

Type

Recreational Land, Undeveloped Land, Lot

Latitude / Longitude

62.2255 / -149.9579

Acreage

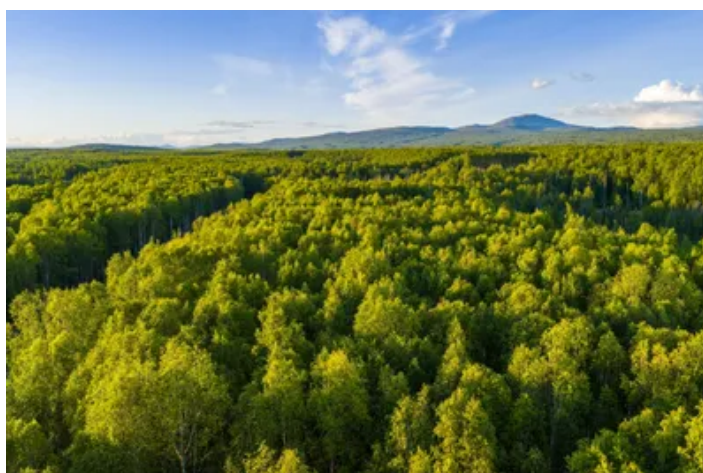
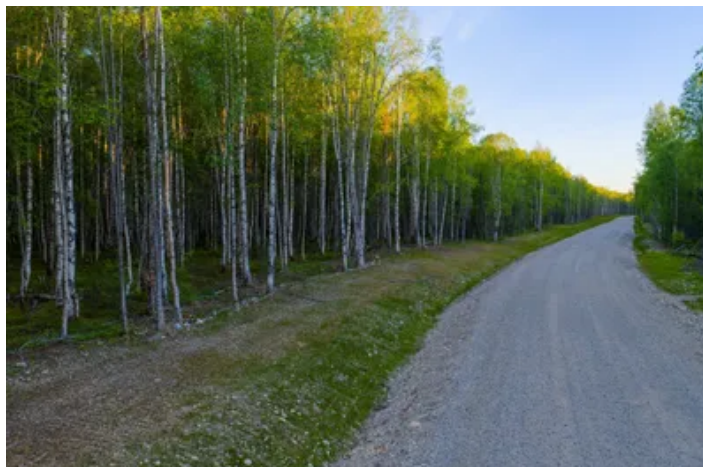
782

Price

\$78,200

Property Website

<https://arrowheadlandcompany.com/property/unit-11-baldy-lake-airpark-matanuska-susitna-alaska/111811/>



Unit 11 Baldy Lake Airpark Talkeetna, AK / Matanuska-Susitna County

PROPERTY DESCRIPTION

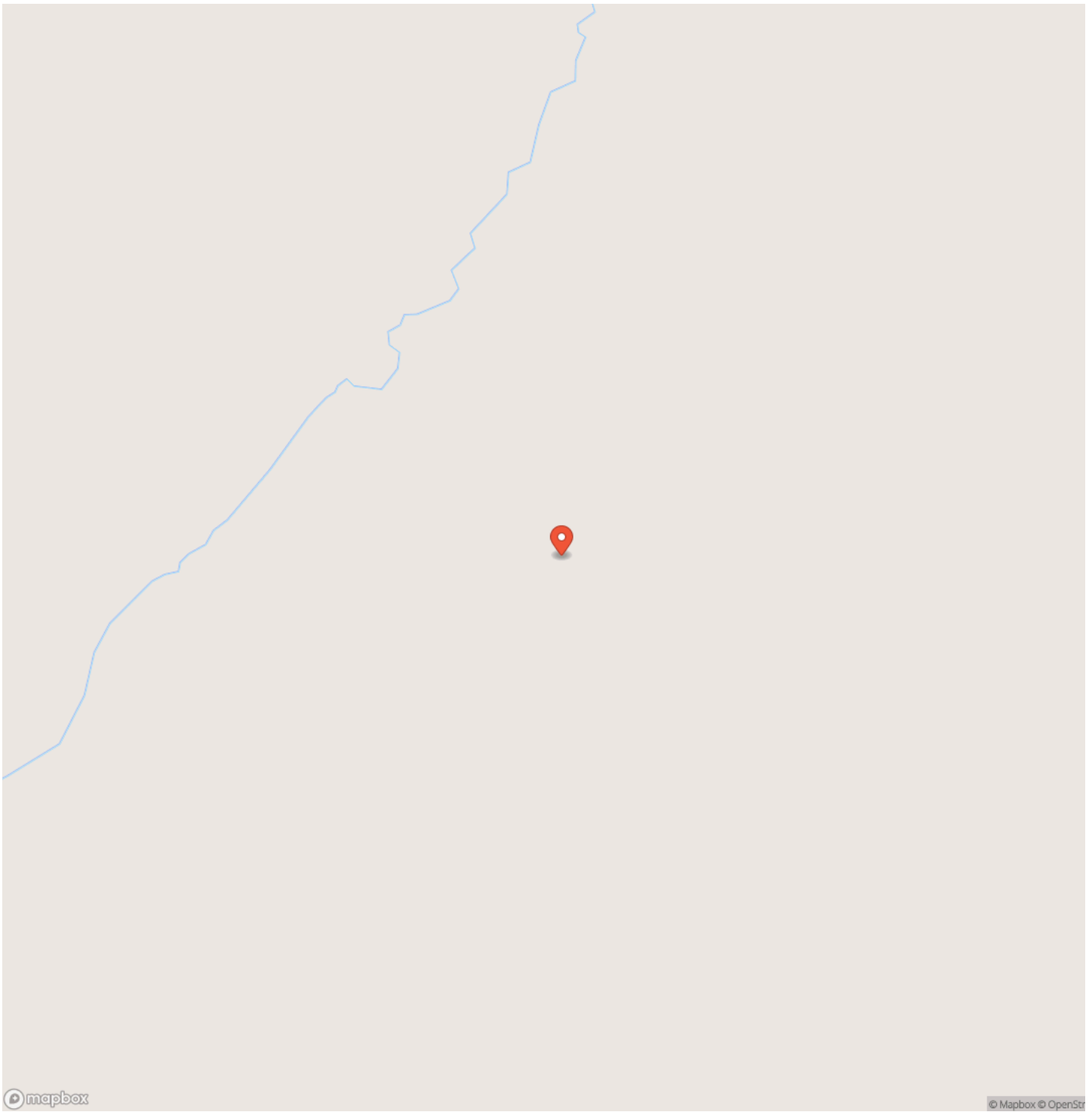
Take a look at this beautiful 7.82 +/- acre property in Baldy Lake Airpark, where aviation, recreation, and the beauty of Alaska's wilderness come together! This exceptional parcel features Baldy Creek running along the backside of the property, creating a peaceful natural setting with the relaxing sounds of flowing water and added privacy. With plenty of room to build your dream cabin, home, or hangar, this property offers the ideal balance of space, scenery, and accessibility. Whether you envision a private fly-in retreat, year-round residence, or recreational getaway, this property provides endless opportunities to enjoy the Alaska lifestyle! The combination of mature trees, open building areas, and creek frontage creates a setting that is both beautiful and functional. Located near Talkeetna and within easy reach of Wasilla and Anchorage, Baldy Lake Airpark is a one-of-a-kind aviation community surrounded by some of Alaska's finest outdoor recreation! Spend your days fishing nearby lakes and rivers, exploring miles of ATV and snowmachine trails, hiking, or simply enjoying the incredible scenery and abundant wildlife that make this area so special. From the airpark, you can access Baldy Mountain by four wheeler or side-by-side, opening the door to exceptional hunting, breathtaking scenery, and endless opportunities to explore Alaska's rugged backcountry. Aviation enthusiasts will appreciate the community's 2,000 +/- foot private airstrip, with the taxiway system providing convenient access throughout the development! Baldy Lake also accommodates floatplanes, making it easy to explore even more of Alaska's remote destinations. With more than 200 +/- acres of common area, residents enjoy additional space to recreate while being part of one of Alaska's premier private aviation communities. Whether you're looking for a secluded getaway, a year-round home, an investment property, or a place where your passion for flying and Alaska's outdoors become part of everyday life, this exceptional 7.82 +/- acre property offers endless possibilities! Owner financing is available with just 20% down, making it easier than ever to own land in one of Alaska's most unique recreational and aviation communities! All showings are by appointment only. If you would like more information or would like to schedule a private viewing please contact Jared Prewett at [\(907\) 203-5754](tel:9072035754).

Disclaimer: The boundary lines shown are approximate and are provided for general reference only. Arrowhead Land Company makes no representations or warranties, express or implied, as to the accuracy, completeness, or reliability of those property lines. Buyers are advised to obtain an independent survey to verify exact property boundaries.

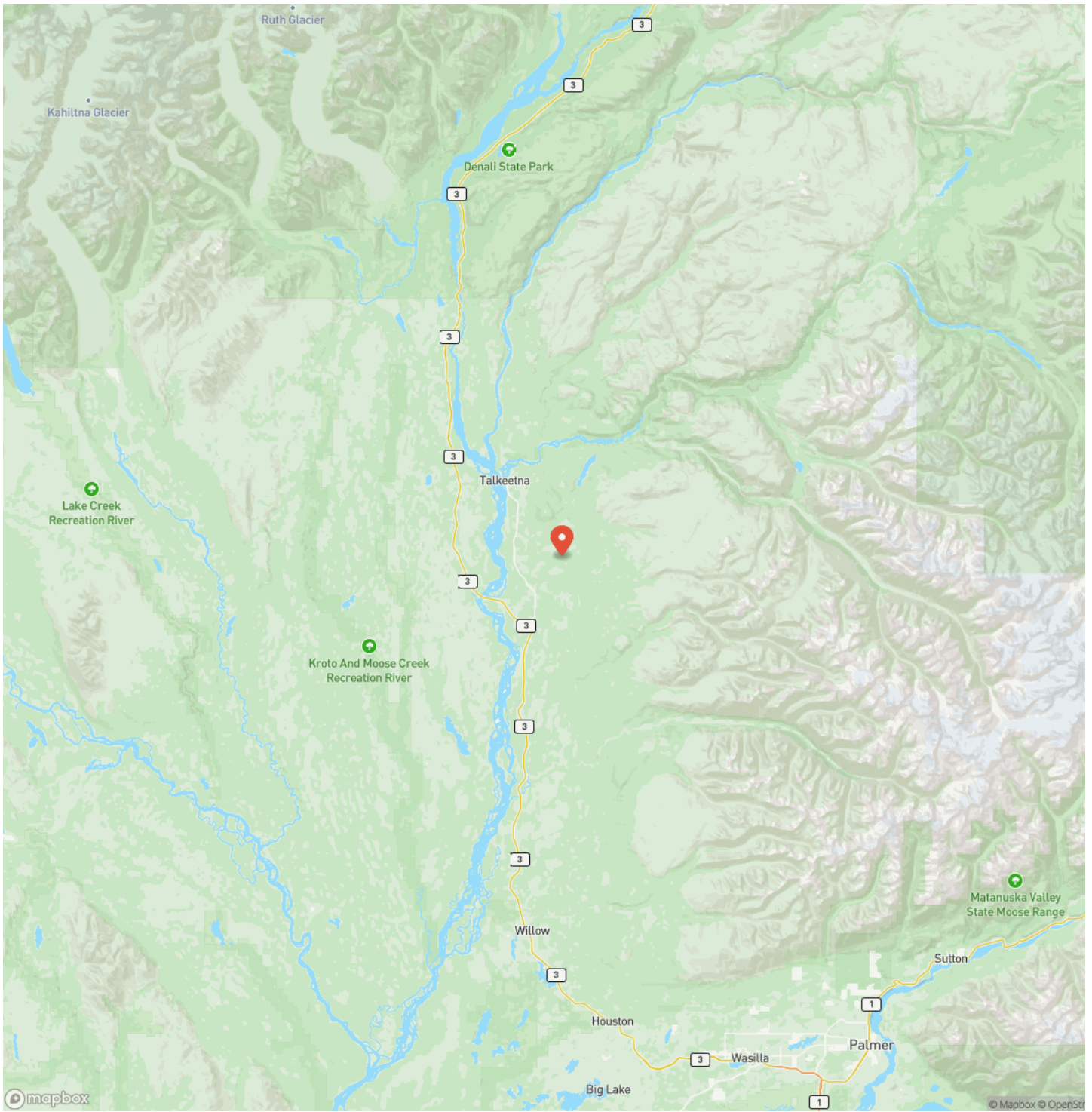
Unit 11 Baldy Lake Airpark
Talkeetna, AK / Matanuska-Susitna County



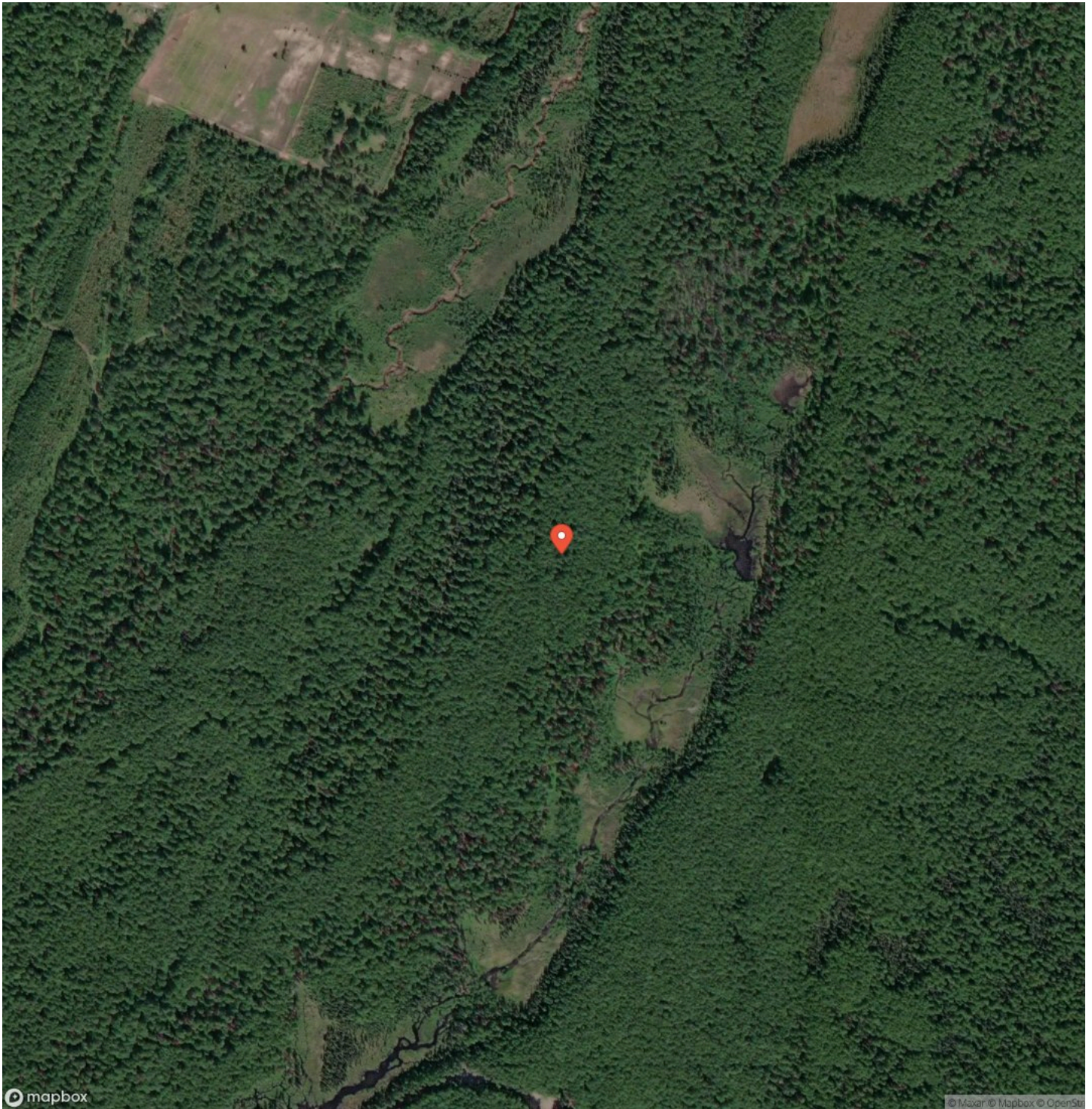
Locator Map



Locator Map



Satellite Map



DISCLAIMERS

Information in this brochure is provided solely for information purposes and does not constitute an offer to sell or advertise real estate outside the states in which broker or agent licensed. The information presented has been obtained from sources deemed to be reliable, but is not guaranteed or warranted by the agent, broker, or the sellers of these properties. This offering is subject to errors, omissions, prior sale, price change, correction or withdrawal from the market without notice. All references to age, square footage, income, expenses, acreage, carrying capacity, and land classification, etc. are approximate. Prospective buyers are chargeable with and expected to conduct their own independent investigation of the information and the property and to rely only on those results. Sellers reserve the right to accept or reject any and all offers without liability to any buyer or cooperating broker.

Maps are provided for illustration purposes only, the accuracy is not warranted. Parcels on interactive maps are not adjusted to match aerial backgrounds. This information is for reference purposes only and is not a legal document. Data maps contain errors. The seller and seller's agent are making known to all potential buyers that there may be variations between the location of the existing fence lines and the legal description of the deeded property. Seller and seller's agent make no warranties with regard to the location of the fence lines in relationship to the deeded property lines, nor does the Seller make any warranties or representations with regard to the specific acreage contained within the fenced property lines. Seller is selling the property in an "as is" condition, which includes the location of the fences as they exist. Boundaries shown on the accompanying maps are approximate, based on county parcel data. The maps are not to scale. The accuracy of the maps is not guaranteed. Prospective buyers are encouraged to verify fence lines, deeded property lines and acreages using a licensed surveyor at their own expense.

Arrowhead Land Company
205 E Dewey Ave
Sapulpa, OK 74066
(833) 873-2452
<https://arrowheadlandcompany.com/>

