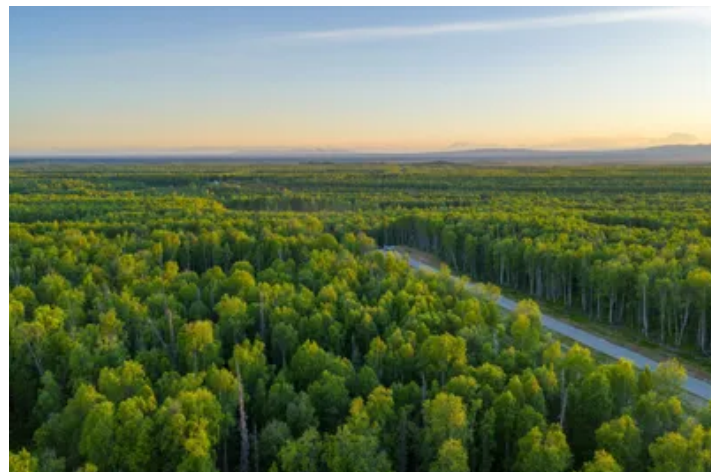


Unit 77 Baldy Lake Airpark
BALDY LK ARPK Lot 77
Talkeetna, AK 99676

\$85,000
3.62± Acres
Matanuska-Susitna County



**Unit 77 Baldy Lake Airpark
Talkeetna, AK / Matanuska-Susitna County**

SUMMARY

Address

BALDY LK ARPK Lot 77 null

City, State Zip

Talkeetna, AK 99676

County

Matanuska-Susitna County

Type

Recreational Land, Undeveloped Land, Lot

Latitude / Longitude

62.2346 / -149.94245

Acreage

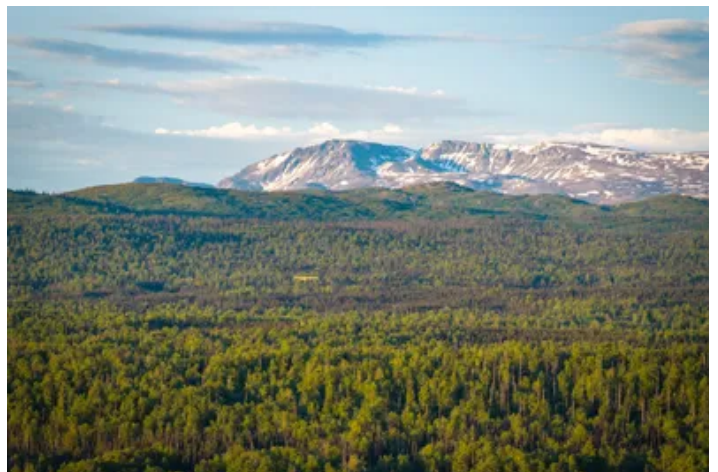
3.62

Price

\$85,000

Property Website

<https://arrowheadlandcompany.com/property/unit-77-baldy-lake-airpark/matanuska-susitna/alaska/111789/>



**Unit 77 Baldy Lake Airpark
Talkeetna, AK / Matanuska-Susitna County**

PROPERTY DESCRIPTION

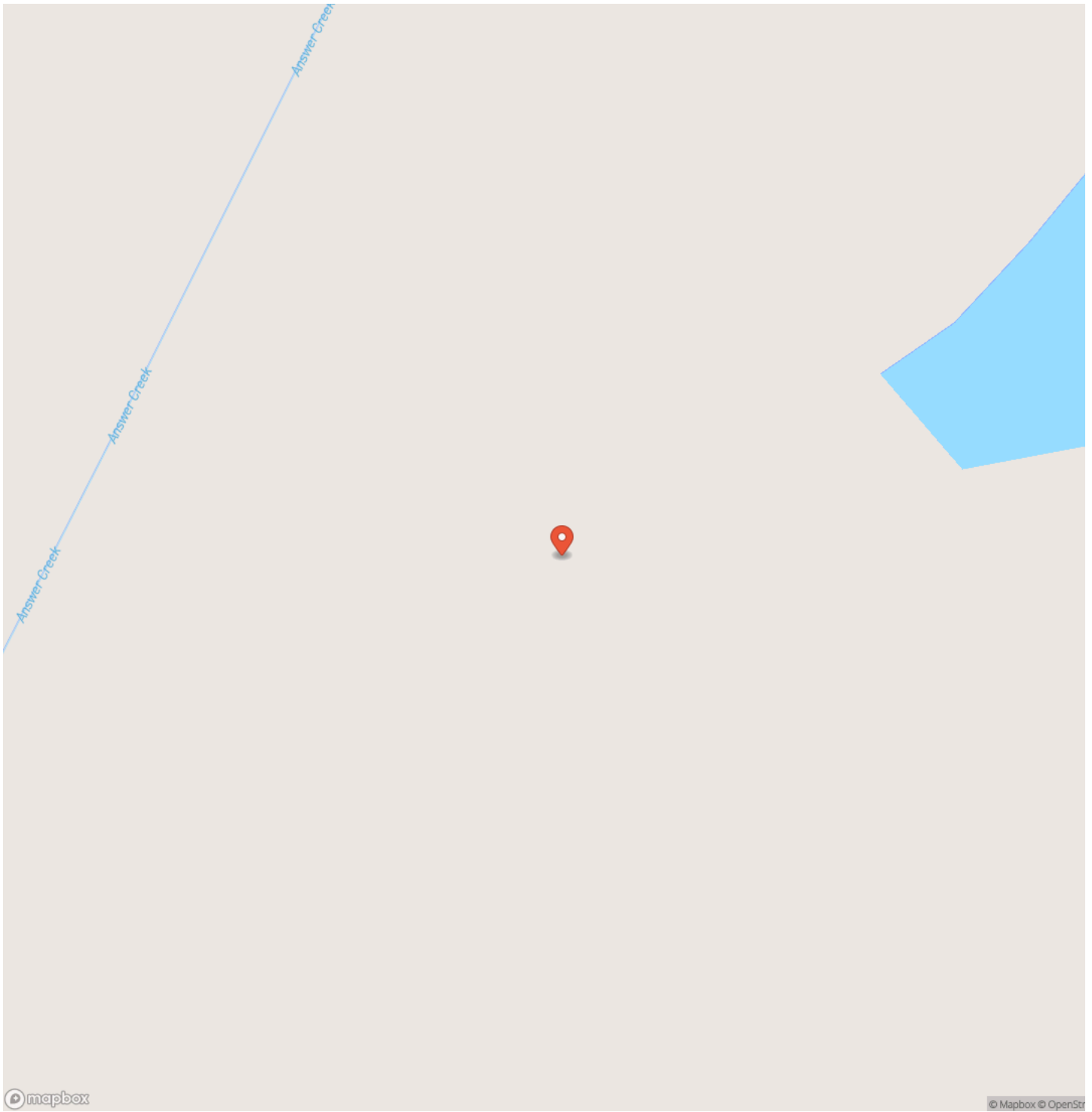
Take a look at this beautiful 3.62 +/- acre property (Unit 77) in Baldy Lake Airpark, where outdoor adventure, privacy, and convenience come together! This exceptional lot offers direct frontage on the community's private runway while Baldy Creek runs along the entire backside of the property, creating the opportunity to enjoy both convenient aviation access and a peaceful setting. Imagine building your dream cabin, home, or hangar with the ability to step out your front door to the runway and unwind beside the creek in your backyard. Located near Talkeetna and within easy reach of Wasilla and Anchorage, Baldy Lake Airpark is a one-of-a-kind community surrounded by some of Alaska's best recreational opportunities. Spend your days fishing nearby lakes and rivers, exploring miles of ATV and snowmachine trails, hiking, or simply enjoying the incredible scenery and wildlife right outside your door. From the airpark, you can access Baldy Mountain by four wheeler or side by side, opening the door to exceptional hunting, breathtaking scenery, and endless opportunities to explore Alaska's rugged backcountry. For aviation enthusiasts, the community features a 2,000 +/- foot private airstrip with direct access from this property, allowing you to taxi to and from your own lot. Baldy Lake also provides floatplane access, making it easy to explore even more of Alaska's remote destinations. With more than 200 +/- acres of common area, residents enjoy plenty of open space while being part of one of Alaska's premier private airpark communities. Whether you're looking for a peaceful getaway, an off-grid cabin site, a year-round residence, an investment property, or a place where your passion for flying can become part of everyday life, this property offers exceptional flexibility and endless possibilities! Owner financing is available with just 20% down, making it easier than ever to own land in one of Alaska's most unique recreational communities! All showings are by appointment only. If you would like more information or would like to schedule a private viewing please contact Jared Prewett at [\(907\) 203-5754](tel:9072035754).

Disclaimer: The boundary lines shown are approximate and are provided for general reference only. Arrowhead Land Company makes no representations or warranties, express or implied, as to the accuracy, completeness, or reliability of those property lines. Buyers are advised to obtain an independent survey to verify exact property boundaries.

Unit 77 Baldy Lake Airpark
Talkeetna, AK / Matanuska-Susitna County



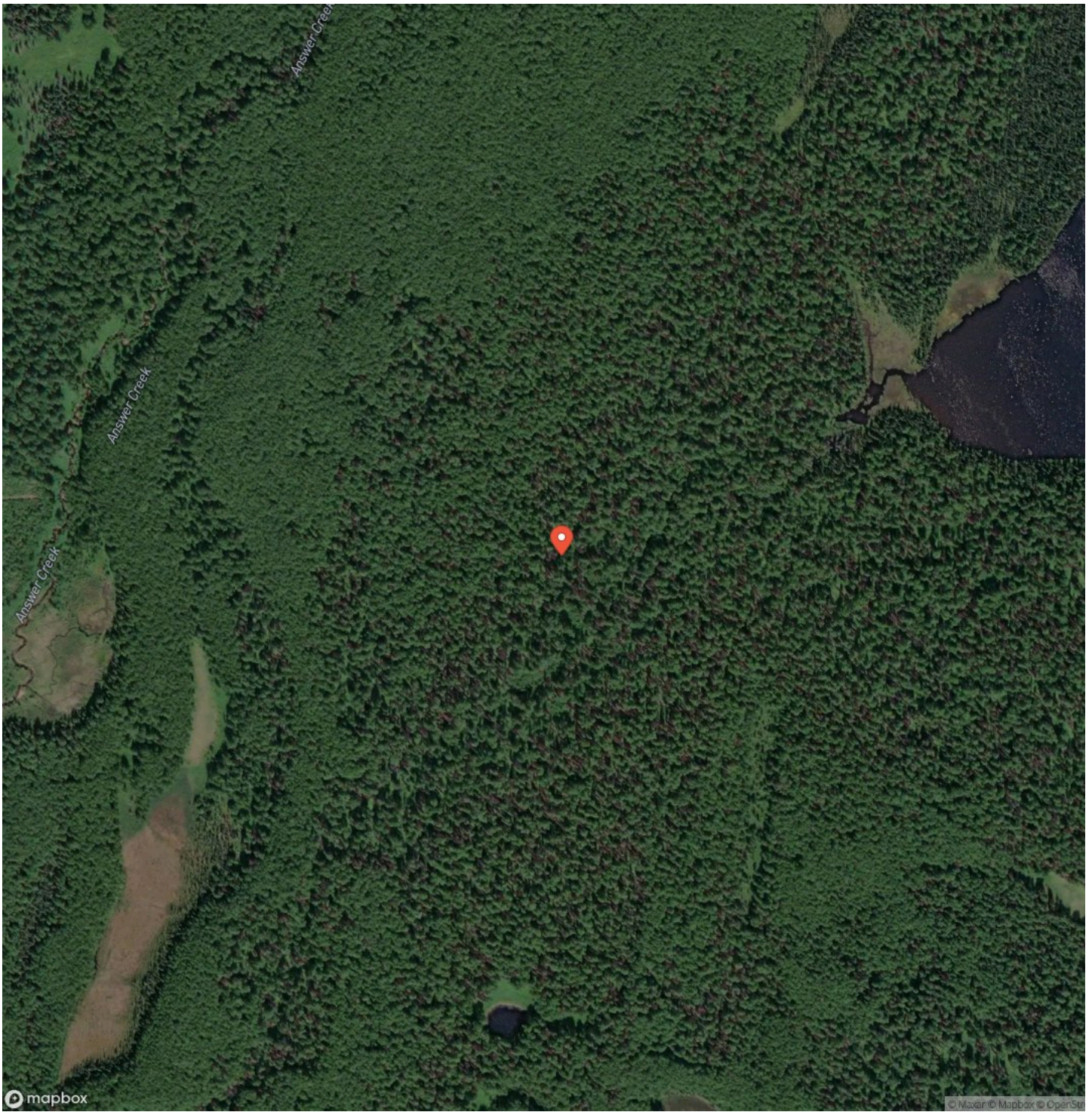
Locator Map



Locator Map



Satellite Map



DISCLAIMERS

Information in this brochure is provided solely for information purposes and does not constitute an offer to sell or advertise real estate outside the states in which broker or agent licensed. The information presented has been obtained from sources deemed to be reliable, but is not guaranteed or warranted by the agent, broker, or the sellers of these properties. This offering is subject to errors, omissions, prior sale, price change, correction or withdrawal from the market without notice. All references to age, square footage, income, expenses, acreage, carrying capacity, and land classification, etc. are approximate. Prospective buyers are chargeable with and expected to conduct their own independent investigation of the information and the property and to rely only on those results. Sellers reserve the right to accept or reject any and all offers without liability to any buyer or cooperating broker.

Maps are provided for illustration purposes only, the accuracy is not warranted. Parcels on interactive maps are not adjusted to match aerial backgrounds. This information is for reference purposes only and is not a legal document. Data maps contain errors. The seller and seller's agent are making known to all potential buyers that there may be variations between the location of the existing fence lines and the legal description of the deeded property. Seller and seller's agent make no warranties with regard to the location of the fence lines in relationship to the deeded property lines, nor does the Seller make any warranties or representations with regard to the specific acreage contained within the fenced property lines. Seller is selling the property in an "as is" condition, which includes the location of the fences as they exist. Boundaries shown on the accompanying maps are approximate, based on county parcel data. The maps are not to scale. The accuracy of the maps is not guaranteed. Prospective buyers are encouraged to verify fence lines, deeded property lines and acreages using a licensed surveyor at their own expense.

Arrowhead Land Company
205 E Dewey Ave
Sapulpa, OK 74066
(833) 873-2452
<https://arrowheadlandcompany.com/>

