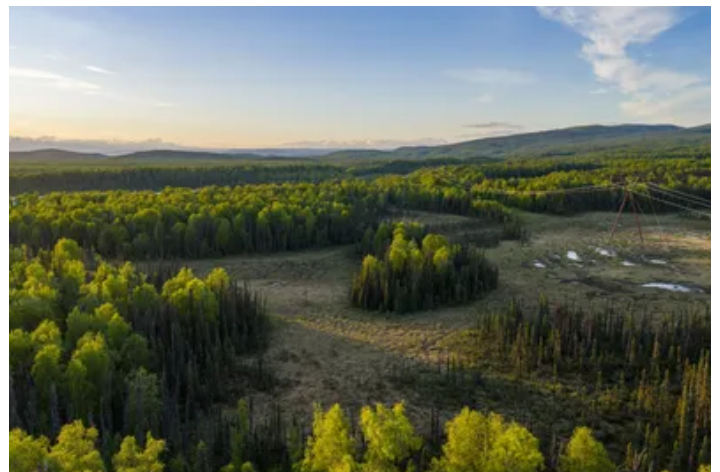


Unit 57 Baldy Lake Airpark
BALDY LK ARPK Lot 57
Talkeetna, AK 99676

\$362,500
145.47± Acres
Matanuska-Susitna County



Unit 57 Baldy Lake Airpark
Talkeetna, AK / Matanuska-Susitna County

SUMMARY

Address

BALDY LK ARPK Lot 57 null

City, State Zip

Talkeetna, AK 99676

County

Matanuska-Susitna County

Type

Recreational Land, Undeveloped Land, Lot

Latitude / Longitude

62.2262 / -149.91995

Acreage

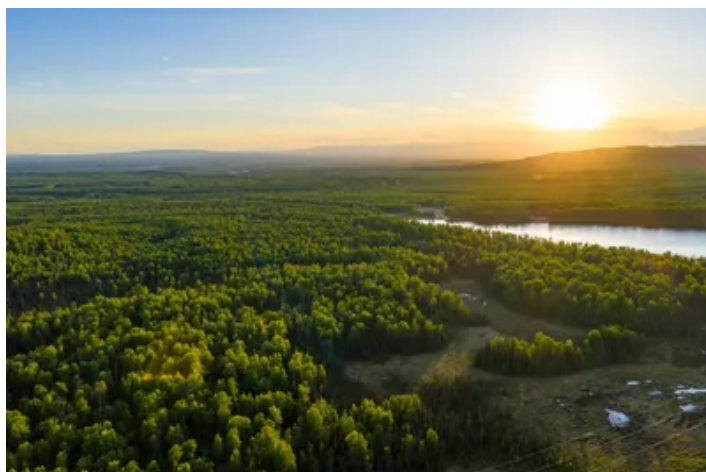
145.47

Price

\$362,500

Property Website

<https://arrowheadlandcompany.com/property/unit-57-baldy-lake-airpark-/matanuska-susitna/alaska/111845/>

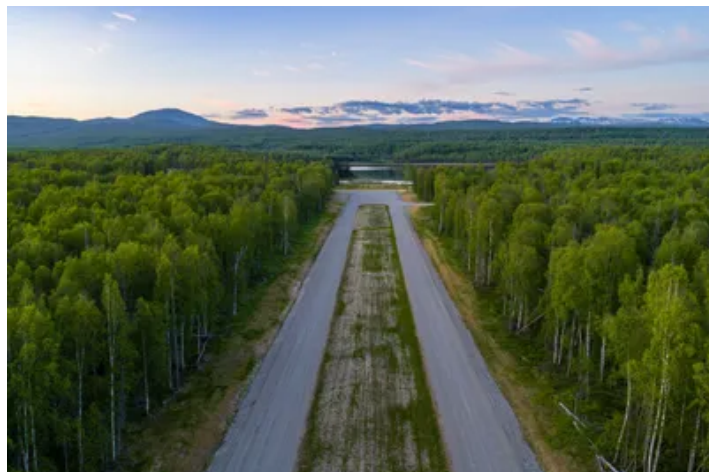
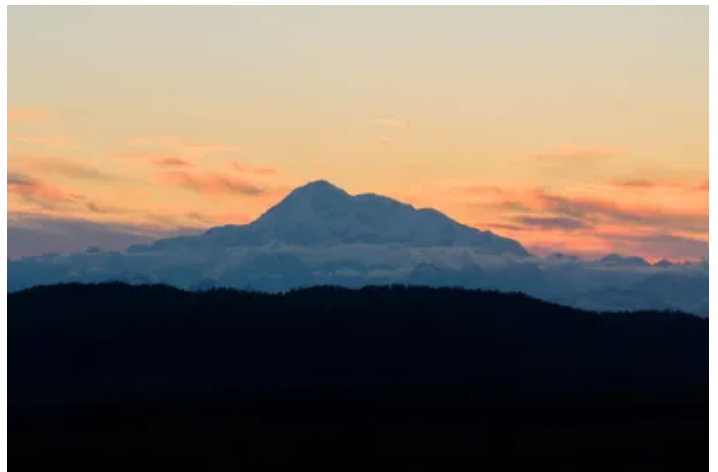
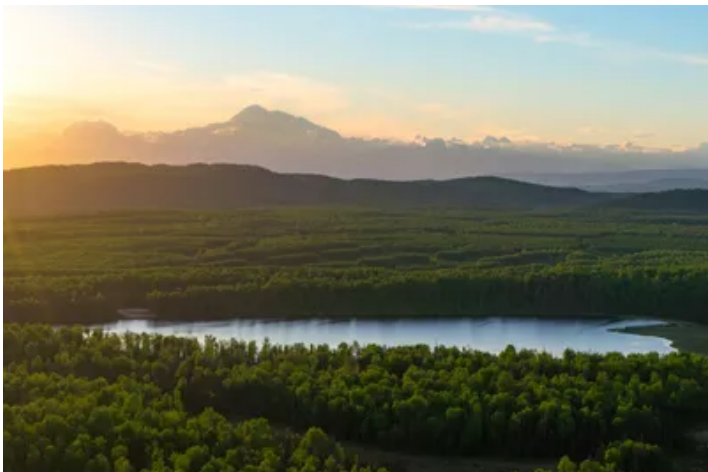


PROPERTY DESCRIPTION

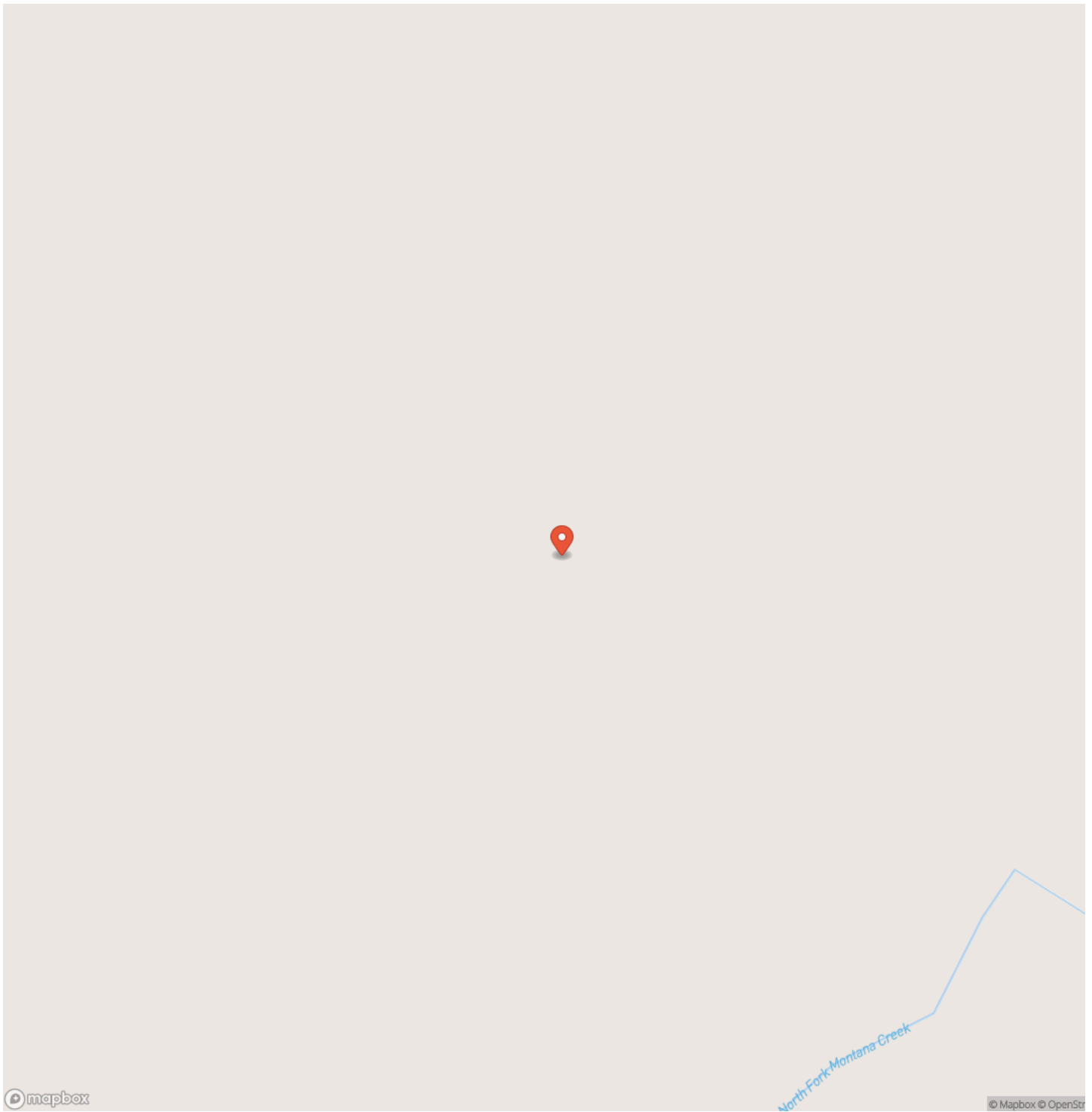
Introducing an incredible opportunity to own 145.47 +/- acres in Baldy Lake Airpark, where aviation, recreation, and Alaska wilderness come together on an extraordinary scale! This expansive property borders the North Fork of Montana Creek along its southeast corner and features an outstanding mix of high and dry ground, mature timber, and open areas, providing countless possibilities for building, recreation, and exploring your own private piece of Alaska. Whether you envision a private fly-in estate, a family compound, recreational basecamp, hunting retreat, or future development opportunity, this remarkable parcel offers the space and flexibility to bring your vision to life. The combination of forest, natural clearings, and creek frontage creates a landscape that is both functional and incredibly scenic. Located near Talkeetna and within easy reach of Wasilla and Anchorage, Baldy Lake Airpark is a one-of-a-kind community surrounded by some of Alaska's finest outdoor recreation. Spend your days fishing nearby lakes and rivers, exploring miles of ATV and snowmachine trails, hiking, or simply enjoying the incredible scenery and abundant wildlife that call this area home. From the airpark, you can access Baldy Mountain by four wheeler or side-by-side, opening the door to exceptional hunting, breathtaking scenery, and endless opportunities to explore Alaska's rugged backcountry. Aviation enthusiasts will appreciate the community's 2,000 +/- foot private airstrip, and while this parcel does not have direct runway frontage, the community's road system is designed as taxiways, allowing convenient aircraft access between your property and the runway. Baldy Lake also accommodates floatplanes, making it easy to explore even more of Alaska's remote destinations. With more than 200 +/- acres of common area, residents enjoy additional space to recreate while being part of one of Alaska's premier private aviation communities. The size of this parcel offers a level of privacy and opportunity rarely found within an airpark, making it ideal for those seeking room to roam while still enjoying the unique benefits of a fly-in community. Whether you're looking for a year-round residence, a secluded fly-in getaway, a recreational property, an investment, or a place where aviation and the Alaska lifestyle come together, this exceptional 145.47 +/- acre property offers unmatched potential in one of Southcentral Alaska's most unique communities. Owner financing is available with just 20% down, making it easier than ever to own one of the largest and most versatile properties in Baldy Lake Airpark. All showings are by appointment only. If you would like more information or would like to schedule a private viewing please contact Jared Prewett at [\(907\) 203-5754](tel:9072035754).

Disclaimer: The boundary lines shown are approximate and are provided for general reference only. Arrowhead Land Company makes no representations or warranties, express or implied, as to the accuracy, completeness, or reliability of those property lines. Buyers are advised to obtain an independent survey to verify exact property boundaries.

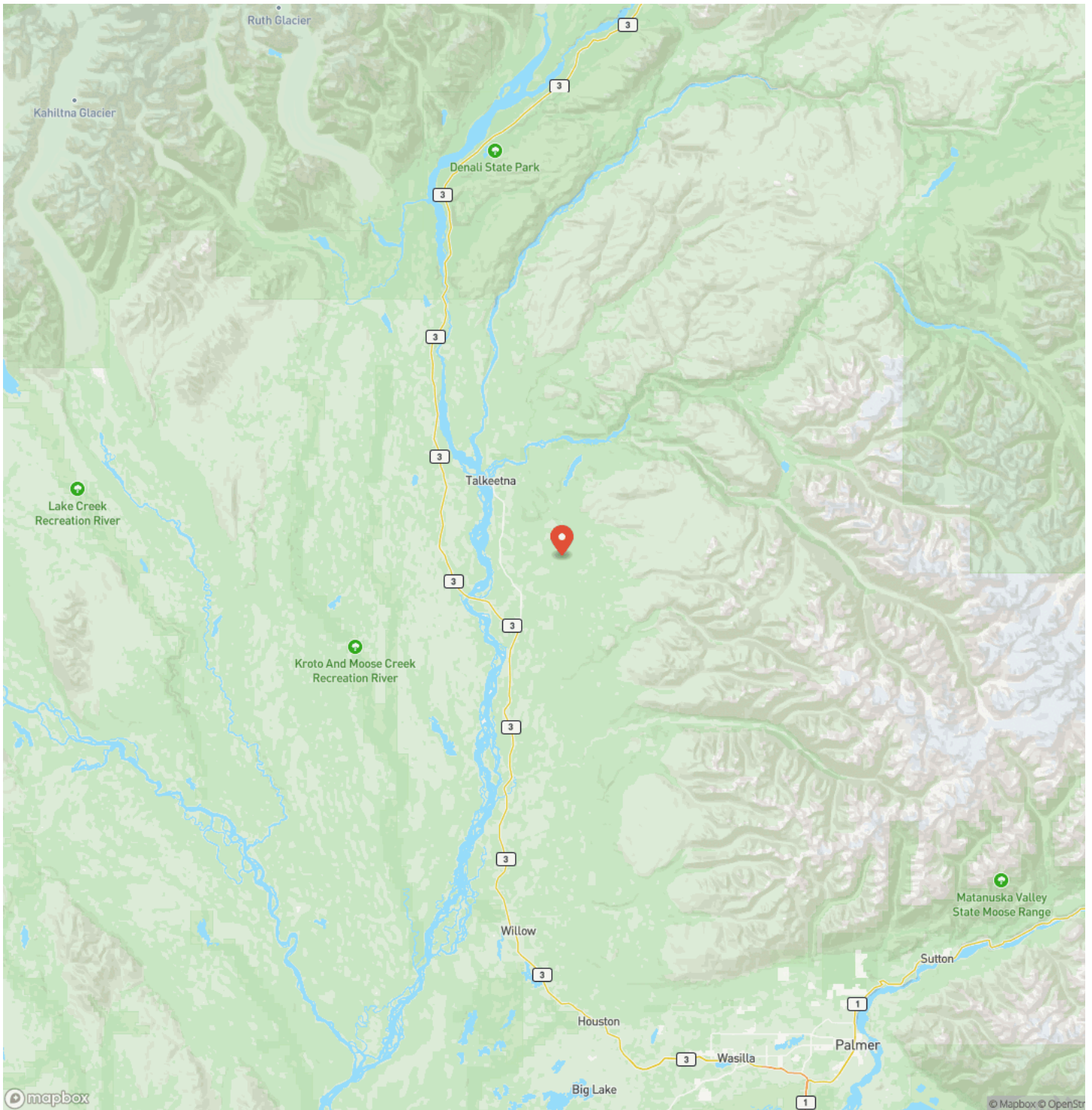
Unit 57 Baldy Lake Airpark
Talkeetna, AK / Matanuska-Susitna County



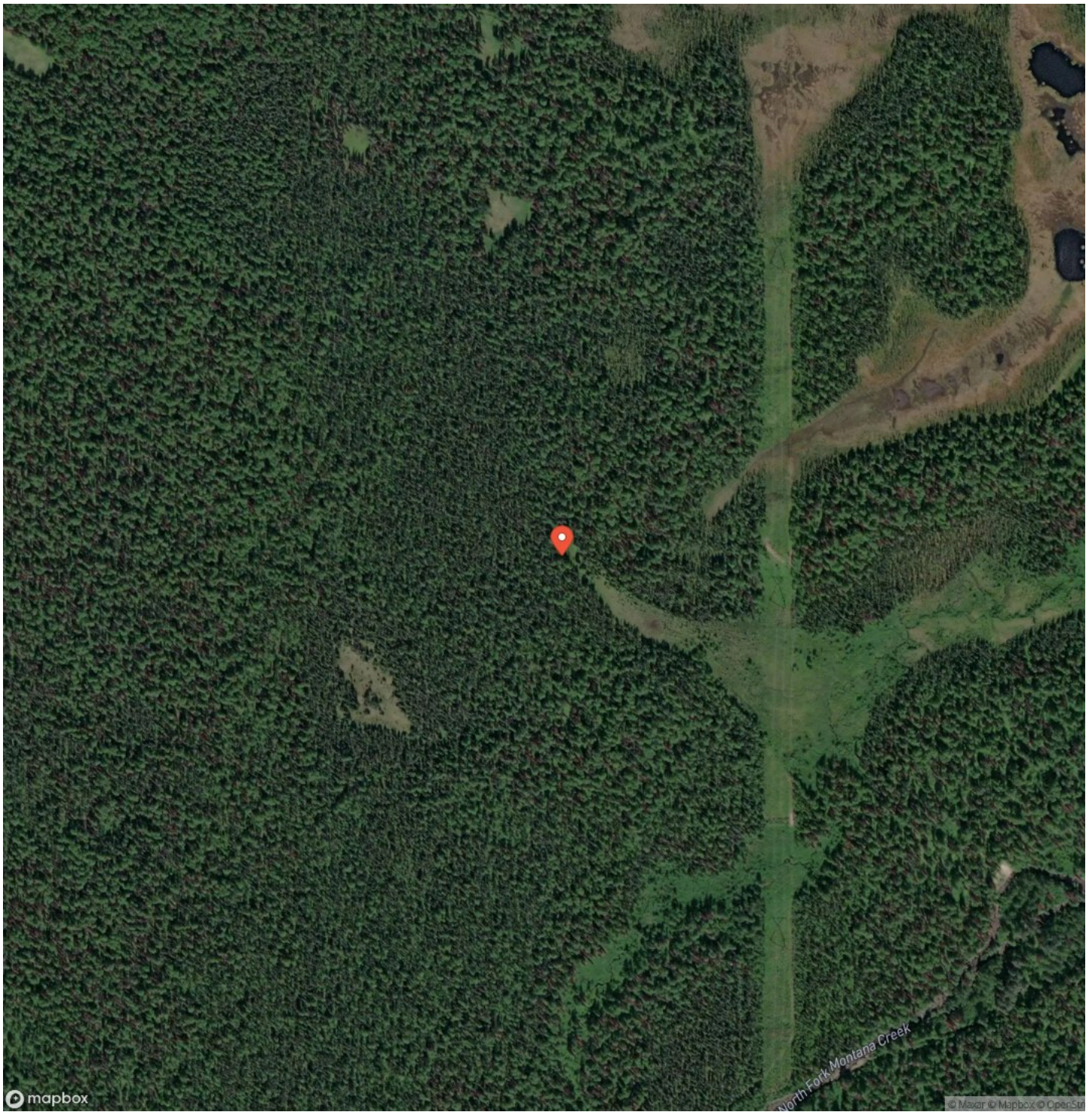
Locator Map



Locator Map



Satellite Map



DISCLAIMERS

Information in this brochure is provided solely for information purposes and does not constitute an offer to sell or advertise real estate outside the states in which broker or agent licensed. The information presented has been obtained from sources deemed to be reliable, but is not guaranteed or warranted by the agent, broker, or the sellers of these properties. This offering is subject to errors, omissions, prior sale, price change, correction or withdrawal from the market without notice. All references to age, square footage, income, expenses, acreage, carrying capacity, and land classification, etc. are approximate. Prospective buyers are chargeable with and expected to conduct their own independent investigation of the information and the property and to rely only on those results. Sellers reserve the right to accept or reject any and all offers without liability to any buyer or cooperating broker.

Maps are provided for illustration purposes only, the accuracy is not warranted. Parcels on interactive maps are not adjusted to match aerial backgrounds. This information is for reference purposes only and is not a legal document. Data maps contain errors. The seller and seller's agent are making known to all potential buyers that there may be variations between the location of the existing fence lines and the legal description of the deeded property. Seller and seller's agent make no warranties with regard to the location of the fence lines in relationship to the deeded property lines, nor does the Seller make any warranties or representations with regard to the specific acreage contained within the fenced property lines. Seller is selling the property in an "as is" condition, which includes the location of the fences as they exist. Boundaries shown on the accompanying maps are approximate, based on county parcel data. The maps are not to scale. The accuracy of the maps is not guaranteed. Prospective buyers are encouraged to verify fence lines, deeded property lines and acreages using a licensed surveyor at their own expense.

Arrowhead Land Company
205 E Dewey Ave
Sapulpa, OK 74066
(833) 873-2452
<https://arrowheadlandcompany.com/>

