

Hardscrabble Farm
886 Mound Road
Cuthbert, GA 39840

\$2,925,000
515± Acres
Randolph County



Hardscrabble Farm
Cuthbert, GA / Randolph County

SUMMARY

Address

886 Mound Road

City, State Zip

Cuthbert, GA 39840

County

Randolph County

Type

Farms, Timberland, Recreational Land, Hunting Land

Latitude / Longitude

31.912301 / -84.767493

Dwelling Square Feet

2769

Bedrooms / Bathrooms

4 / 3

Acreage

515

Price

\$2,925,000

Property Website

<https://www.mossyoakproperties.com/property/hardscrabble-farm-randolph-georgia/96943/>



Hardscrabble Farm Cuthbert, GA / Randolph County

PROPERTY DESCRIPTION

For more information regarding this listing, please contact listing agent **Cole Bonner** at [229-561-5111](tel:229-561-5111)

Hardscrabble Farm - Randolph County, Georgia

Hardscrabble Farm is an exceptional 515± acre high-quality recreational and sporting property, offering a rare blend of proven wildlife management, income production, and long-term conservation value. The property is protected by a conservation easement that preserves the land's character while allowing multiple designated building envelopes, with commercial water extraction permitted subject to applicable permits and conservation standards. In addition to the deeded acreage, there is approximately 643± acres of adjoining land available to lease, giving the new owner control of more than 1,100 acres under coordinated wildlife management—a significant advantage for managing deer, turkey, and quail at scale. This contiguous block has been intentionally managed for wildlife and forestry for over three decades, resulting in exceptional habitat quality and limited hunting pressure.

The farm features two established quail courses, a managed dove field, multiple food plots, and mature hardwood stands, all carefully managed through long-term stewardship by the current owner. Mature hardwood ridges and protected riparian corridors enhance habitat diversity, while limited hunting pressure and designated sanctuary areas have resulted in a robust and healthy population of deer and wild turkey, along with outstanding upland bird habitat. The property is also currently involved in University of Georgia research initiatives focused on longleaf pine restoration and quail habitat enhancement.

Improvements are anchored by a restored farmhouse lodge featuring four bedrooms and three bathrooms, showcasing heart pine throughout the home with select modern finishes. The lodge blends historic charm with comfortable living space, serving as an ideal headquarters for family use or hosting guests, while the property's remote setting provides minimal light pollution and remarkable night skies.

A standout feature of the property is Ned Lake, a spring-fed lake of approximately 10± acres, designed by a renowned pond engineer and fed by year-round springs originating on the property. Ned Lake offers excellent fishing, scenic views, and a dependable water source for wildlife. The lake is professionally managed, equipped with automatic feeders, and supported by multiple docks and improved shoreline access.

The property includes approximately 200± acres of longleaf pine, with 146 acres currently under pine straw lease, providing consistent annual income. This income-producing component enhances both wildlife habitat and long-term timber value while offering an established revenue stream.

Hardscrabble Farm represents a turn-key, legacy-quality recreational property-where conservation, income, and world-class sporting opportunities come together on a truly special tract.

Highlights

- 515± acres in Randolph County, Georgia
- Protected by conservation easement with multiple building envelopes, conservation easement allows commercial water extraction, subject to permits and conservation standards
- Over 600± acres of adjoining land available to lease (1,100+ acres under management)
- Intensively managed for deer, turkey, and quail
- Two established quail courses
- Managed dove field
- Strong deer and turkey population



- Multiple established food plots
- Spring-fed lake ~10± acres
- 200± acres of longleaf pine, including 146 income-producing acres under pine straw lease
- 35 Irrigated pecan trees
- 300-yard shooting range
- Restored farmhouse lodge - 4 bed / 3 bath, sleeps up to 20 people
- Heart pine throughout lodge

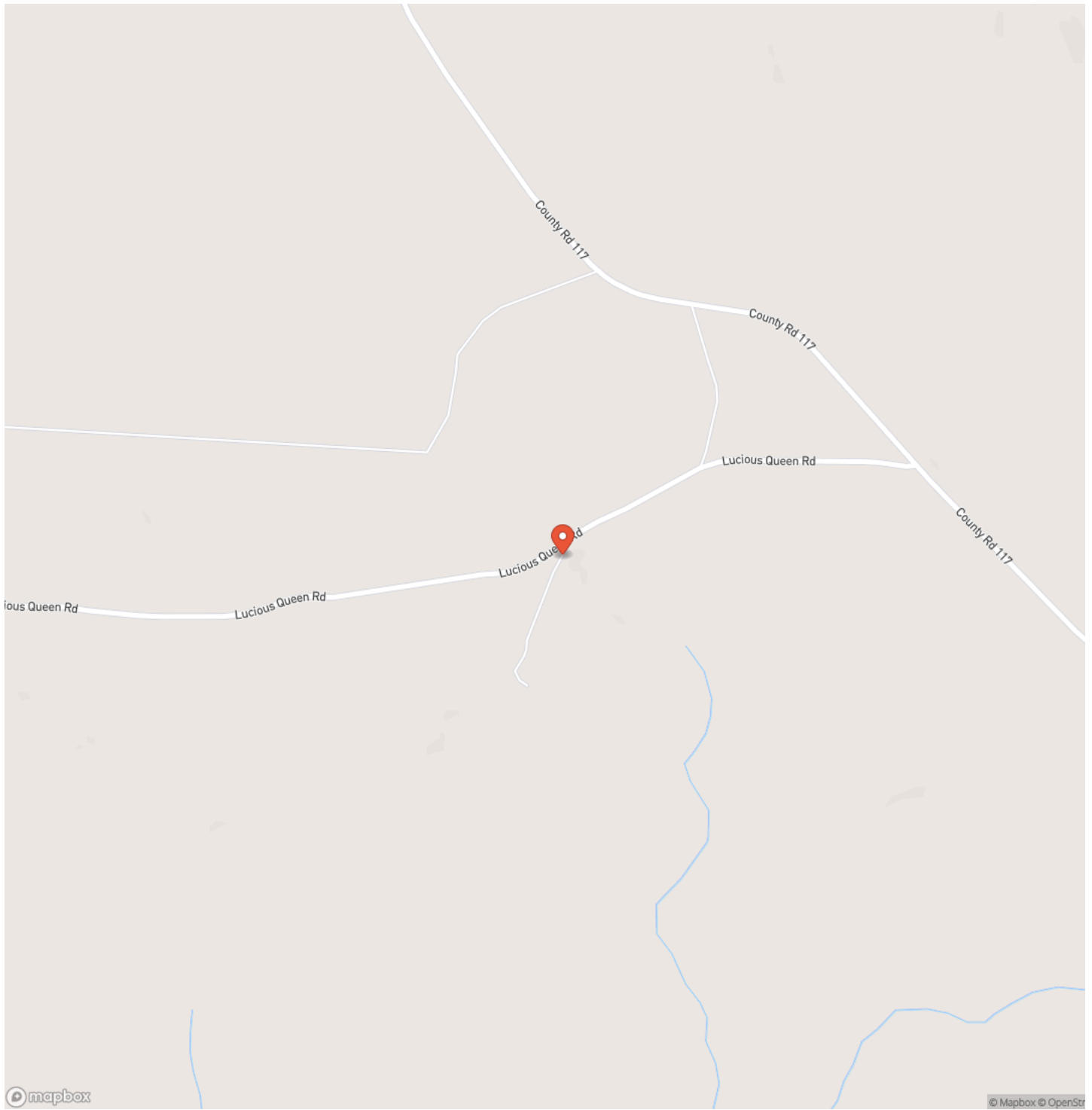
Location

- 10 minutes to **Cuthbert, GA**
- 30 minutes to **Lake Eufaula**
- 1 hour to **Columbus, GA**
- 1 hour 15 minutes to **Albany, GA**
- 1 hours 45 minutes to **Montgomery, AL**
- 2 hours 30 minutes to **Tallahassee, FL**
- 3 hours 45 minutes to **Birmingham, AL**
- 4 hours to **Jacksonville, FL**
- 4 hours to **Ocala, FL**
- 5 hours to **Destin / 30A, FL**
- 5 hours to **Orlando, FL**
- 5 hours 20 minutes to **Tampa, FL**
- 7 hours 15 minutes to **West Palm Beach, FL**

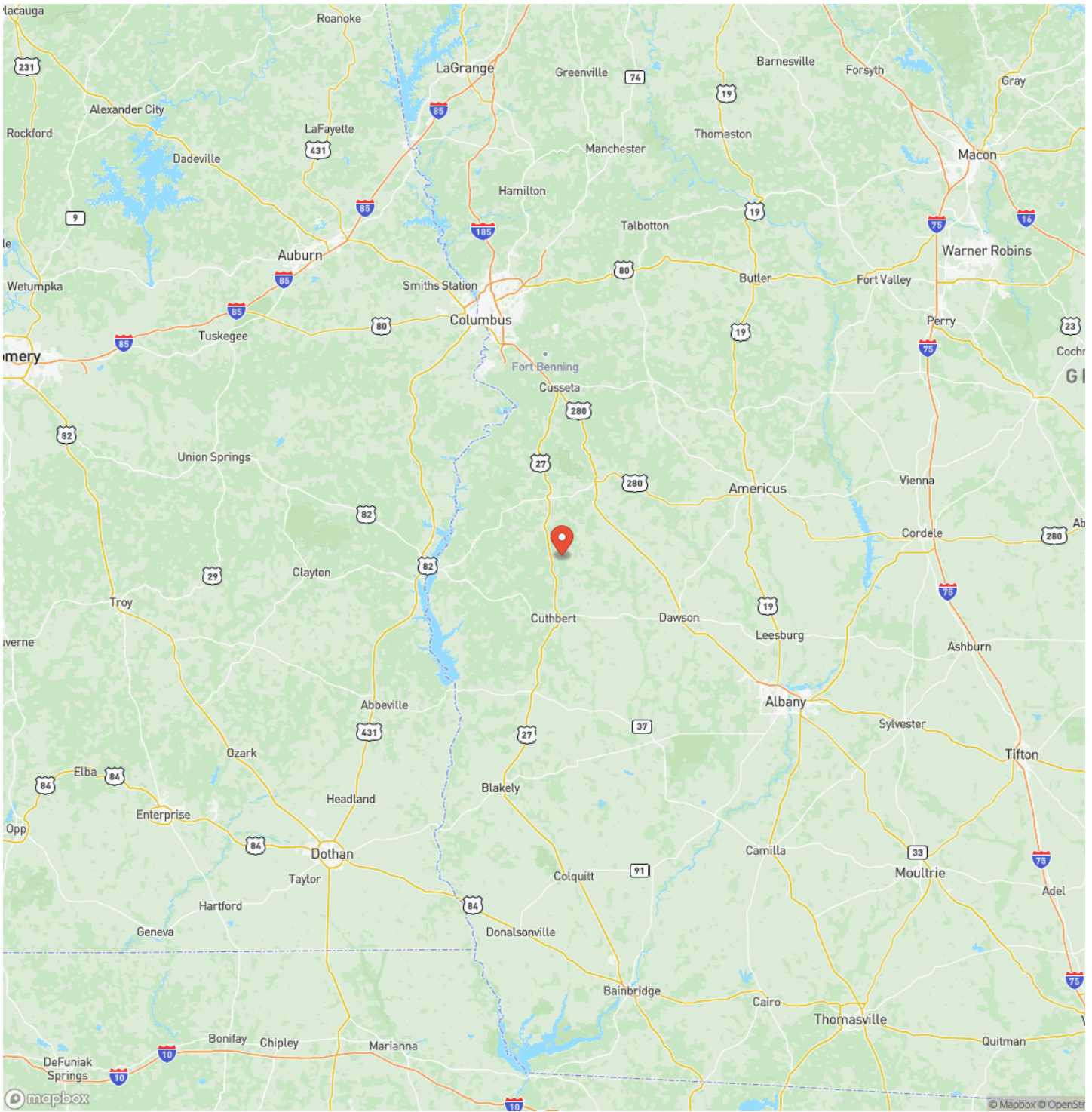
Hardscrabble Farm
Cuthbert, GA / Randolph County



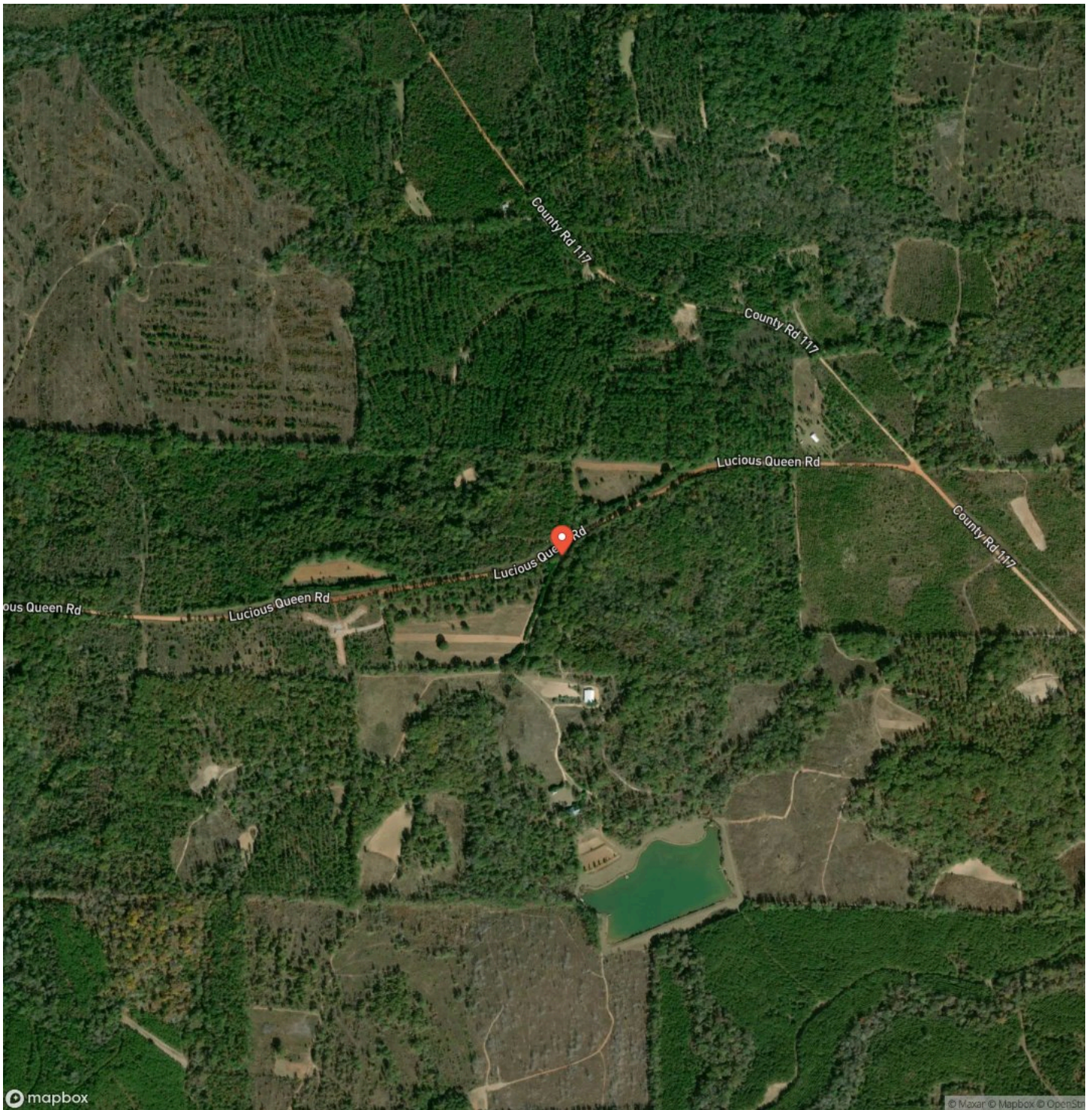
Locator Map



Locator Map



Satellite Map



DISCLAIMERS

Information in this brochure is provided solely for information purposes and does not constitute an offer to sell or advertise real estate outside the states in which broker or agent licensed. The information presented has been obtained from sources deemed to be reliable, but is not guaranteed or warranted by the agent, broker, or the sellers of these properties. This offering is subject to errors, omissions, prior sale, price change, correction or withdrawal from the market without notice. All references to age, square footage, income, expenses, acreage, carrying capacity, and land classification, etc. are approximate. Prospective buyers are chargeable with and expected to conduct their own independent investigation of the information and the property and to rely only on those results. Sellers reserve the right to accept or reject any and all offers without liability to any buyer or cooperating broker.

Maps are provided for illustration purposes only, the accuracy is not warranted. Parcels on interactive maps are not adjusted to match aerial backgrounds. This information is for reference purposes only and is not a legal document. Data maps contain errors. The seller and seller's agent are making known to all potential buyers that there may be variations between the location of the existing fence lines and the legal description of the deeded property. Seller and seller's agent make no warranties with regard to the location of the fence lines in relationship to the deeded property lines, nor does the Seller make any warranties or representations with regard to the specific acreage contained within the fenced property lines. Seller is selling the property in an "as is" condition, which includes the location of the fences as they exist. Boundaries shown on the accompanying maps are approximate, based on county parcel data. The maps are not to scale. The accuracy of the maps is not guaranteed. Prospective buyers are encouraged to verify fence lines, deeded property lines and acreages using a licensed surveyor at their own expense.

Mossy Oak Properties Southern Land & Homes, LLC
145 NW Cantey Avenue
Madison, FL 32340
(850) 973-2200
MossyOakProperties.com

