

**34.85 acres of Versatile Hunting Land For Sale in Craven  
County NC!**  
Lot 20 Guinea Mill Rd  
Ernul, NC 28527

**\$134,900**  
34.850± Acres  
Craven County



## 34.85 acres of Versatile Hunting Land For Sale in Craven County NC! Ernul, NC / Craven County

### SUMMARY

#### Address

Lot 20 Guinea Mill Rd

#### City, State Zip

Ernul, NC 28527

#### County

Craven County

#### Type

Hunting Land, Timberland, Recreational Land, Undeveloped Land, Horse Property, Business Opportunity

#### Latitude / Longitude

35.300340 / -77.023294

#### Acreage

34.850

#### Price

\$134,900

#### Property Website

<https://www.mossyoakproperties.com/property/34-85-acres-of-versatile-hunting-land-for-sale-in-craven-county-nc-craven-north-carolina/111838/>



## **34.85 acres of Versatile Hunting Land For Sale in Craven County NC! Ernul, NC / Craven County**

---

### **PROPERTY DESCRIPTION**

**34.85 Acres of Prime Hunting & Recreational Land for Sale on Rock Rd in Eastern North Carolina. Featuring a mix of young natural regrowth, mature maple trees, and a proven one-acre wildlife opening, this tract offers outstanding habitat for deer, turkey, bear, hogs, and small game. With over 750 feet of road frontage, surveyed boundaries, and excellent hunting potential, Lot 19 is an ideal property for hunting, ATV riding, camping, and outdoor recreation.**

Located along Rock Rd in Eastern North Carolina, Lot 19 offers 34.85± acres of excellent recreational ground with outstanding hunting potential. With more than 750 feet of road frontage and stretching nearly 2,500 feet deep, this tract provides exceptional privacy and gives wildlife plenty of room to live and travel away from the road.

The property features a diverse mix of young natural regrowth and mature maple trees, creating a healthy balance of thick bedding cover and open travel corridors. This variety of habitat makes the property attractive to wildlife throughout the year. Signs of whitetail deer, wild turkey, black bear, hogs, and small game can be found across the tract, showing just how active this property is. Trail camera pictures are available upon request and pre qualification.

One of the highlights is an approximately one-acre opening that was recently cleared with a forestry mulcher. This area has already proven to be a wildlife hotspot, with trail cameras capturing multiple mature whitetail bucks, black bears, wild turkeys, and other small game. Whether left as it is or expanded into a food plot, this opening creates an excellent location for stand placement and wildlife management.

A recent survey has confirmed the acreage, and the property boundaries have been professionally opened up with a forestry mulcher, allowing easy access around the perimeter by ATV or side-by-side. This makes it simple to explore the property, maintain trails, and confidently identify the boundary lines.

Lot 19 is an ideal recreational tract for hunting, camping, ATV riding, or simply enjoying the outdoors. Power is located approximately 4 miles away, making it a great candidate for an off-grid hunting camp or rustic cabin.

Conveniently located about 30 minutes from New Bern and approximately 45 minutes from Greenville, this property offers the peace and quiet of rural Eastern North Carolina while remaining close to everyday conveniences. NC Wildlife boat ramps along the Neuse River are also within a short drive, giving you easy access to fishing and boating opportunities.

If you're looking for a manageable-sized hunting property with proven wildlife activity, diverse habitat, and a ready-made location for your next food plot or hunting setup, Lot 19 is a tract you won't want to overlook.

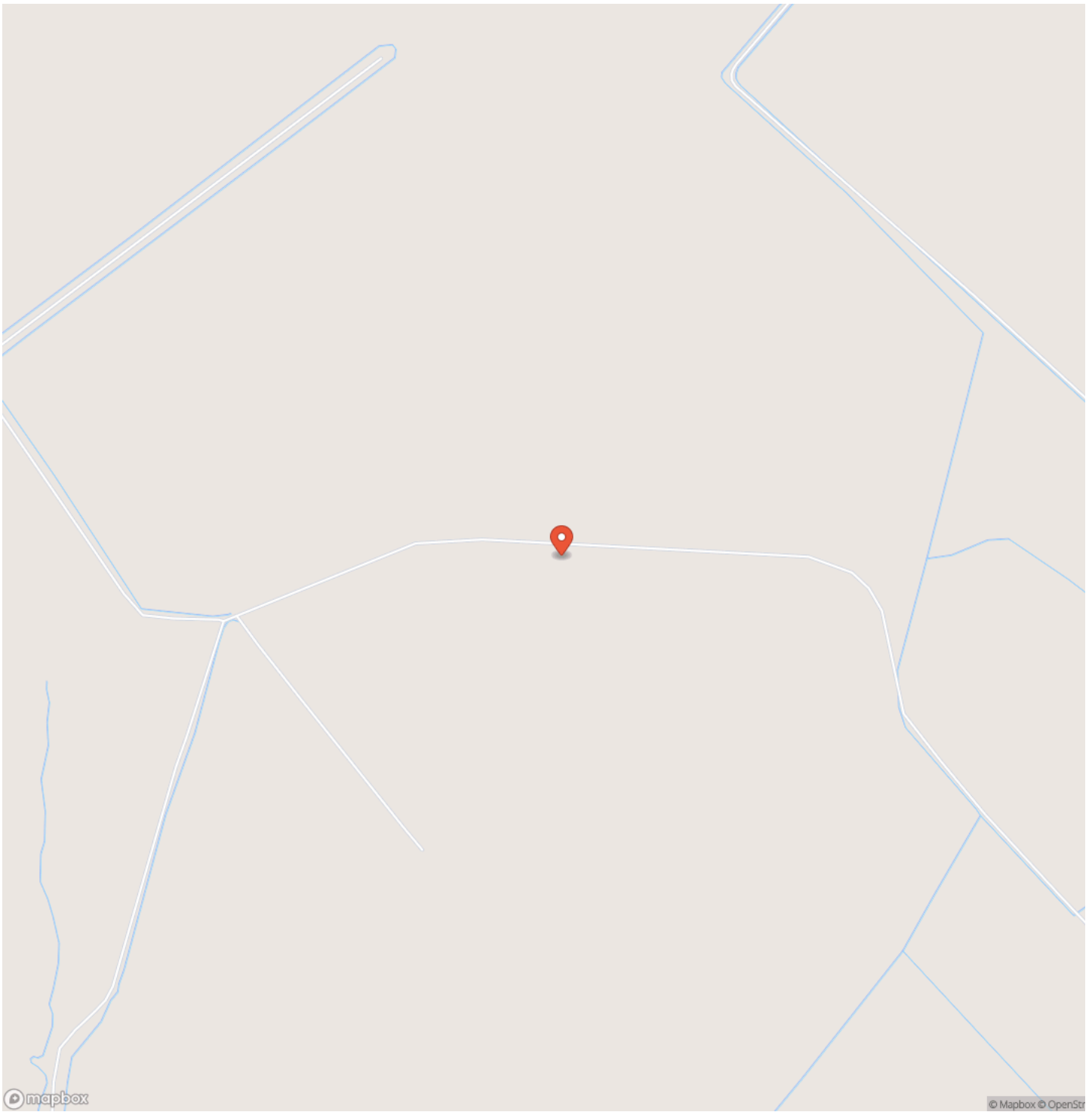
For more information on this and other land for sale in Craven County, contact Chase Furlough at [252-505-6893](tel:252-505-6893) or by email at [cfurlough@mossyoakproperties.com](mailto:cfurlough@mossyoakproperties.com), or visit [landandfarmsrealty.com](http://landandfarmsrealty.com).



34.85 acres of Versatile Hunting Land For Sale in Craven County NC!  
Ernul, NC / Craven County

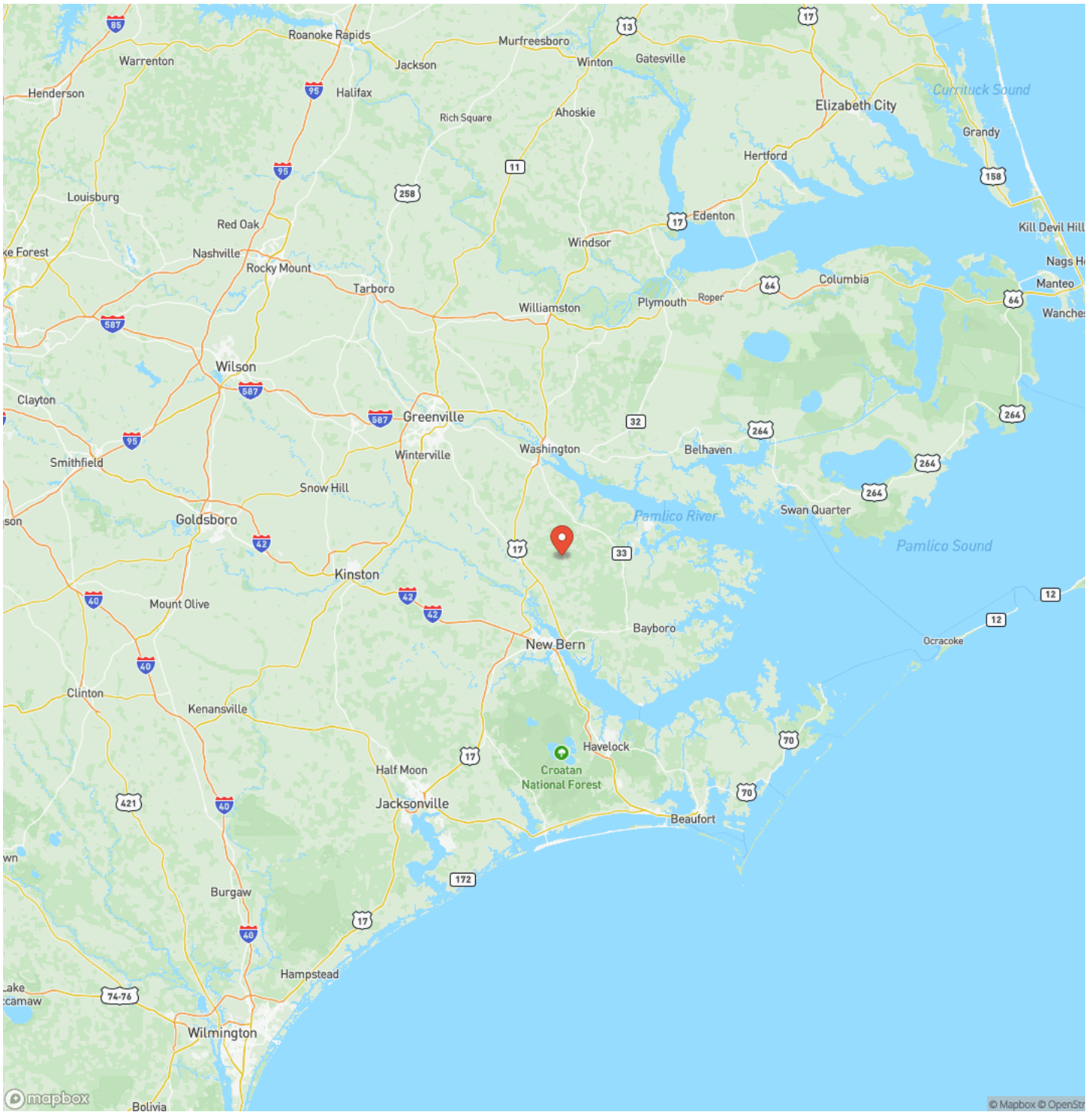


## Locator Map



**34.85 acres of Versatile Hunting Land For Sale in Craven County NC!  
Ernul, NC / Craven County**

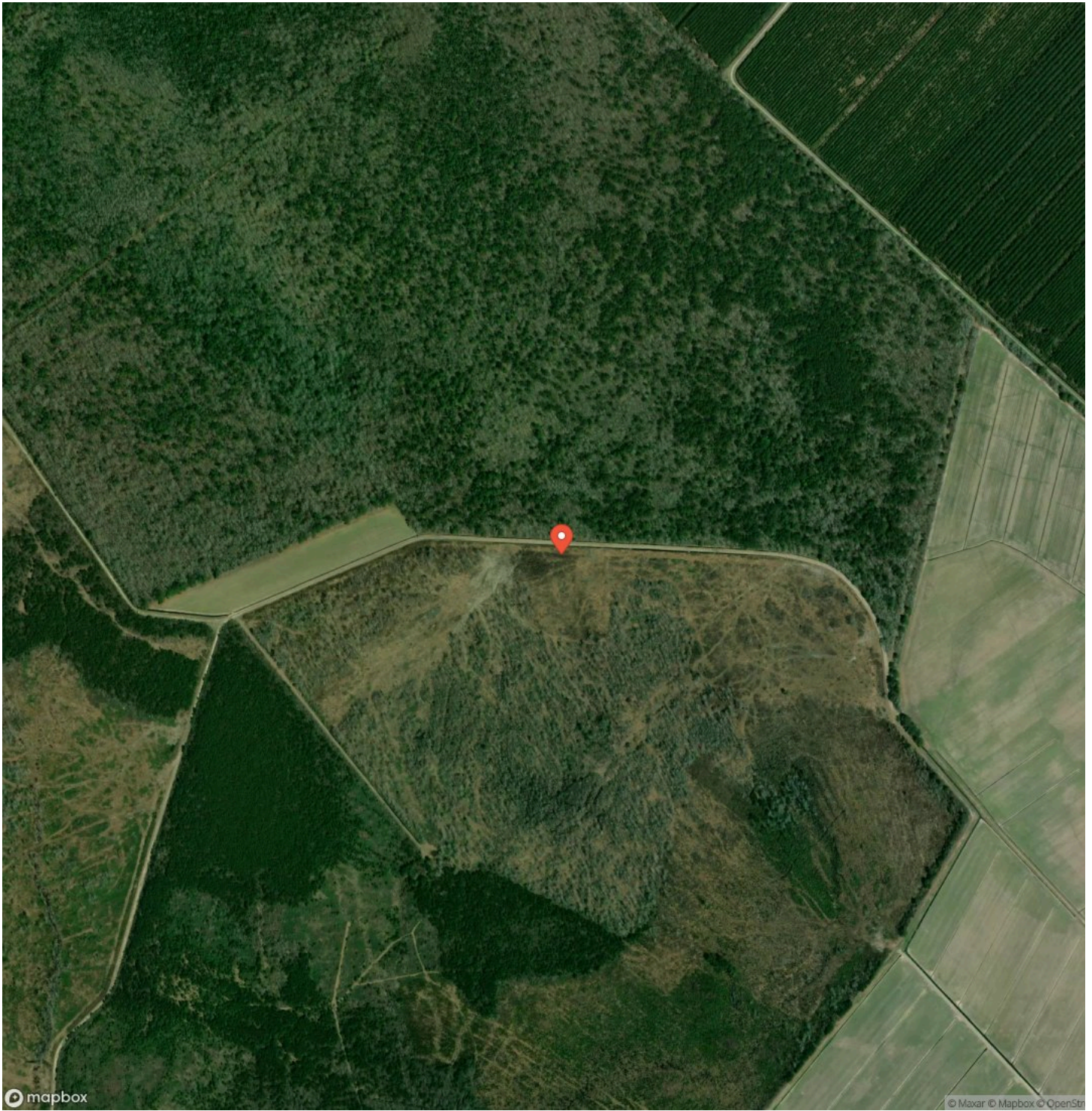
# Locator Map



34.85 acres of Versatile Hunting Land For Sale in Craven County NC!  
Ernul, NC / Craven County

---

## Satellite Map







## **DISCLAIMERS**

Information in this brochure is provided solely for information purposes and does not constitute an offer to sell or advertise real estate outside the states in which broker or agent licensed. The information presented has been obtained from sources deemed to be reliable, but is not guaranteed or warranted by the agent, broker, or the sellers of these properties. This offering is subject to errors, omissions, prior sale, price change, correction or withdrawal from the market without notice. All references to age, square footage, income, expenses, acreage, carrying capacity, and land classification, etc. are approximate. Prospective buyers are chargeable with and expected to conduct their own independent investigation of the information and the property and to rely only on those results. Sellers reserve the right to accept or reject any and all offers without liability to any buyer or cooperating broker.

Maps are provided for illustration purposes only, the accuracy is not warranted. Parcels on interactive maps are not adjusted to match aerial backgrounds. This information is for reference purposes only and is not a legal document. Data maps contain errors. The seller and seller's agent are making known to all potential buyers that there may be variations between the location of the existing fence lines and the legal description of the deeded property. Seller and seller's agent make no warranties with regard to the location of the fence lines in relationship to the deeded property lines, nor does the Seller make any warranties or representations with regard to the specific acreage contained within the fenced property lines. Seller is selling the property in an "as is" condition, which includes the location of the fences as they exist. Boundaries shown on the accompanying maps are approximate, based on county parcel data. The maps are not to scale. The accuracy of the maps is not guaranteed. Prospective buyers are encouraged to verify fence lines, deeded property lines and acreages using a licensed surveyor at their own expense.



---

**Mossy Oak Properties Land and Farms Realty**  
101 Budleigh Street, Suite F  
Manteo, NC 27954  
(844) 480-5263  
<https://www.mossoakproperties.com/>

---

