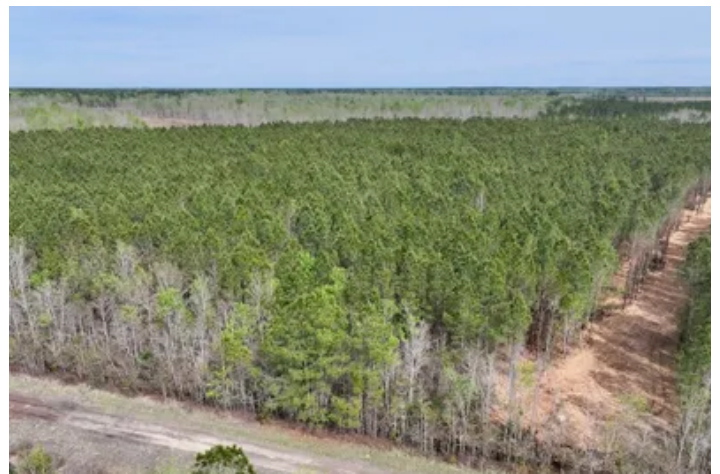


**25+/- acres of Recreational Timber Land For Sale in  
Craven County NC!  
Lot 23 Guinea Mill Rd  
Ernul, NC 28537**

**\$109,900**  
25± Acres  
Craven County



**25+/- acres of Recreational Timber Land For Sale in Craven County NC!  
Ernul, NC / Craven County**

---

**SUMMARY**

**Address**

Lot 23 Guinea Mill Rd

**City, State Zip**

Ernul, NC 28537

**County**

Craven County

**Type**

Hunting Land, Recreational Land, Undeveloped Land, Timberland, Business Opportunity

**Latitude / Longitude**

35.297680 / -77.029981

**Acreage**

25

**Price**

\$109,900

**Property Website**

<https://www.mossyoakproperties.com/property/25-acres-of-recreational-timber-land-for-sale-in-craven-county-nc-craven-north-carolina/102549/>



## 25+/- acres of Recreational Timber Land For Sale in Craven County NC! Ernul, NC / Craven County

---

### **PROPERTY DESCRIPTION**

**25± Acres of Prime Hunting & Recreational Land for Sale on Rock Rd in Eastern North Carolina with Over 1,000 Ft of Road Frontage. Featuring a dense 15± year old pine stand and established ATV trails, this tract offers excellent bedding cover for deer, turkey, hogs, and bear. Surveyed with cleared boundaries, Lot 23 is ideal for hunting, off-grid camping, and ATV riding.**

Set along Rock Rd, Lot 23 is a 25± acre tract that offers a great mix of access, privacy, and strong hunting ground in Eastern North Carolina. With over 1,000 feet of road frontage, you've got plenty of room to pull in, set up an entrance, and still keep your main hunting areas tucked back off the road.

The property is mostly made up of a dense pine stand that's around 15± years old, giving it that thick cover wildlife like to stay in. This type of growth creates ideal bedding and security for whitetail deer, hogs, and black bear, helping keep game on the property instead of just passing through. Existing ATV trails run through the interior, making it easy to get around, check cameras, and access stand locations without having to clear new paths.

There's solid sign of deer, turkey, hogs, and bear throughout the tract, along with quail seen in the surrounding area. As it sits, the property is already huntable, but there's plenty of room to improve it. Adding a few food plots along the trail system, setting up feeders, or opening small pockets in the pines would create a strong balance of bedding and feeding areas to help hold more game year-round.

A new survey has been completed, clearly marking the boundaries and confirming the acreage. The property lines have been opened up with a forestry mulcher, so you can ride or drive the perimeter and easily see where your lines are. Between the road frontage, cleared boundaries, and interior trail system, this tract is ready to use from day one.

Lot 23 is a great option for a recreational setup, whether you're hunting, riding ATVs, or setting up a weekend camp. Power is about 1.5 miles away, making it best suited for off-grid use or a simple cabin in the woods.

You're in a convenient location-about 30 minutes from New Bern and roughly 45 minutes from Greenville-giving you access to town while still enjoying a quiet, rural setting. Nearby NC Wildlife boat ramps along the Neuse River offer easy access to fishing and boating as well.

If you're looking for a manageable-sized tract with thick cover, strong hunting potential, and easy access, Lot 23 off Rock Rd is worth taking a look at.

**\*\* If you would like to purchase more acreage adjoining this tract, ask about that potential! \*\***

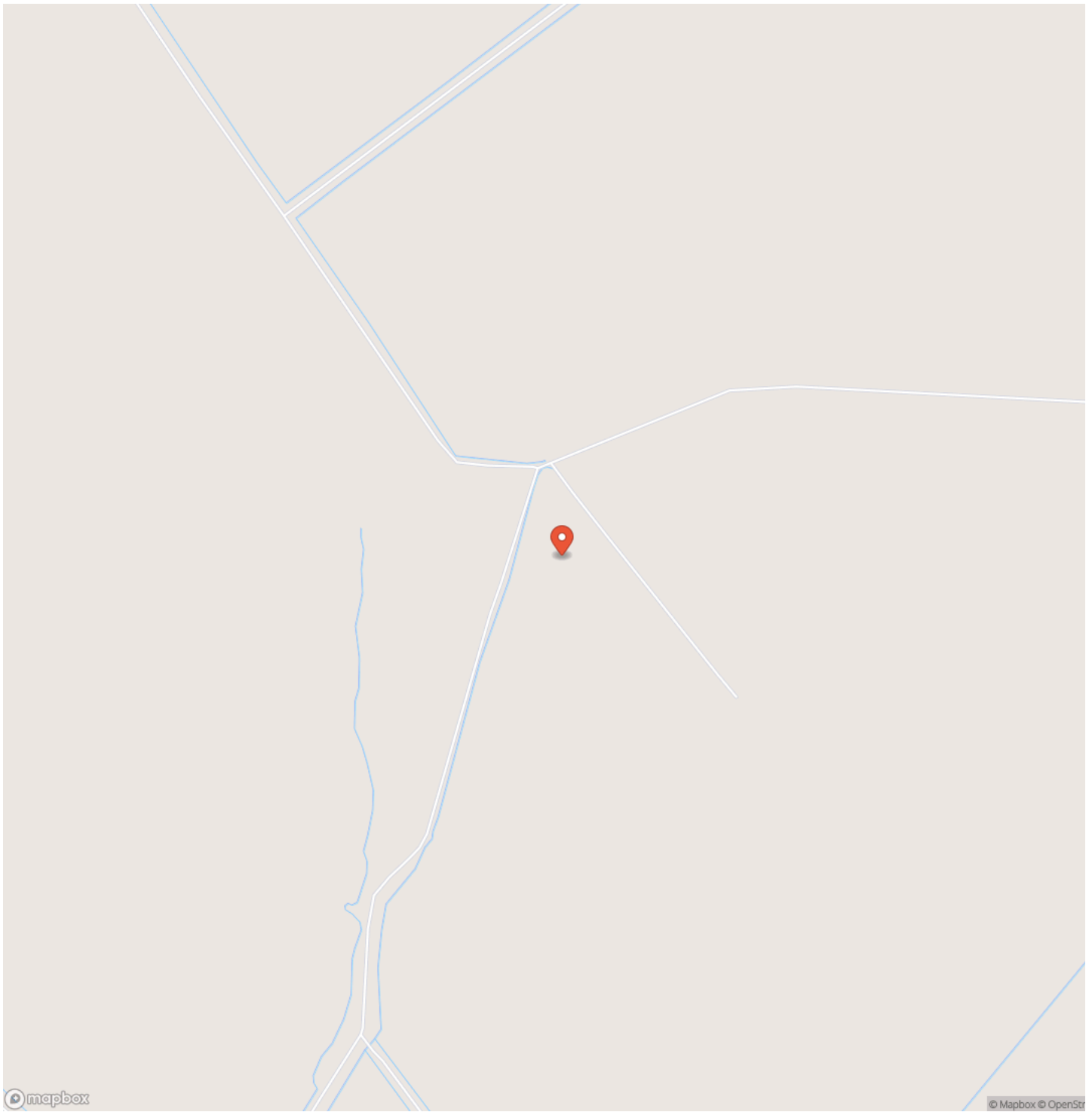
For more information on this and other land for sale in Craven County, contact Chase Furlough at [252-505-6893](tel:252-505-6893) or by email at [cfurlough@mossyoakproperties.com](mailto:cfurlough@mossyoakproperties.com), or visit [landandfarmsrealty.com](http://landandfarmsrealty.com).

25+/- acres of Recreational Timber Land For Sale in Craven County NC!  
Ernul, NC / Craven County

---

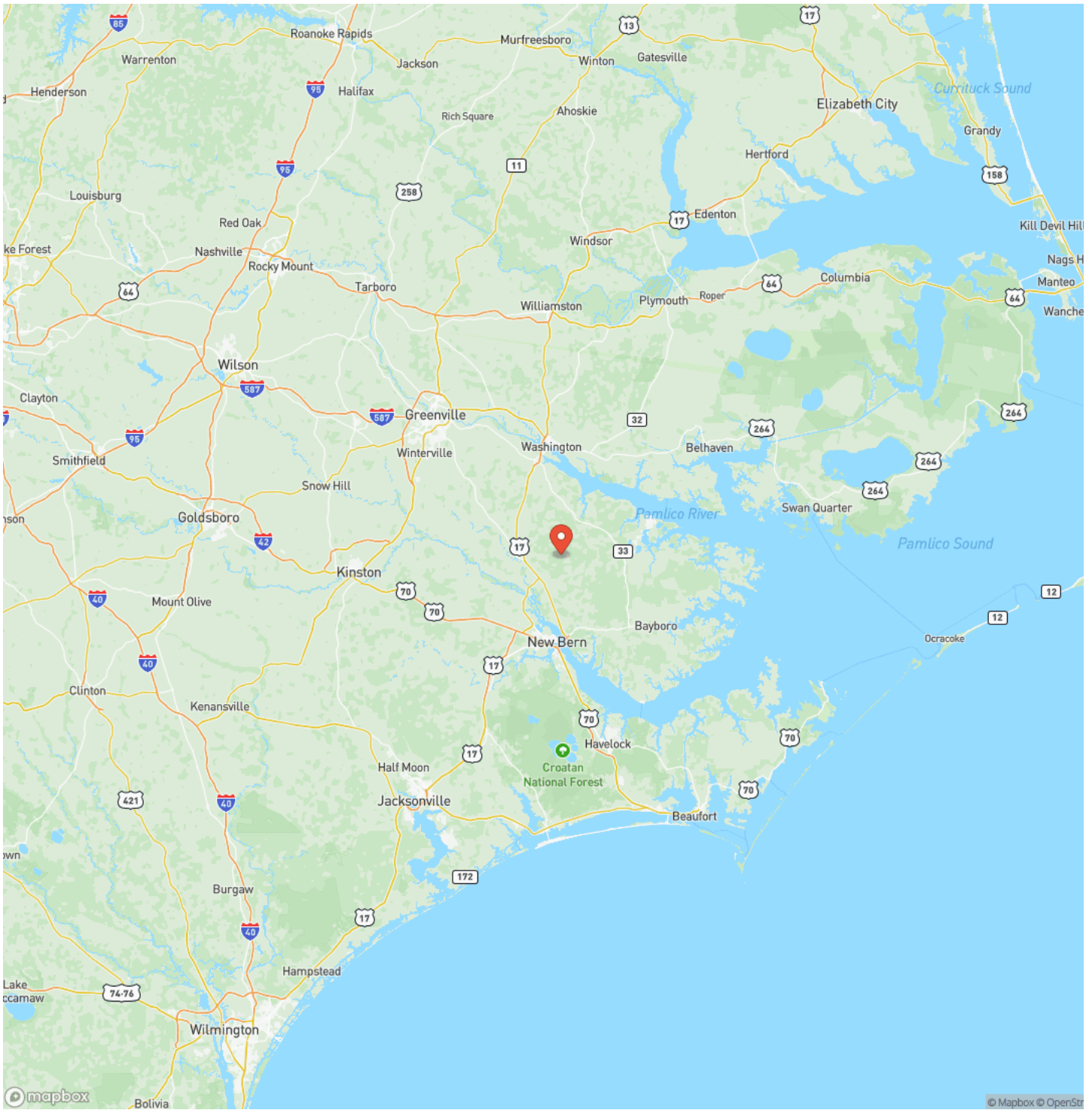


## Locator Map



25+/- acres of Recreational Timber Land For Sale in Craven County NC!  
Ernul, NC / Craven County

# Locator Map



25+/- acres of Recreational Timber Land For Sale in Craven County NC!  
Ernul, NC / Craven County

---

## Satellite Map







## **DISCLAIMERS**

Information in this brochure is provided solely for information purposes and does not constitute an offer to sell or advertise real estate outside the states in which broker or agent licensed. The information presented has been obtained from sources deemed to be reliable, but is not guaranteed or warranted by the agent, broker, or the sellers of these properties. This offering is subject to errors, omissions, prior sale, price change, correction or withdrawal from the market without notice. All references to age, square footage, income, expenses, acreage, carrying capacity, and land classification, etc. are approximate. Prospective buyers are chargeable with and expected to conduct their own independent investigation of the information and the property and to rely only on those results. Sellers reserve the right to accept or reject any and all offers without liability to any buyer or cooperating broker.

Maps are provided for illustration purposes only, the accuracy is not warranted. Parcels on interactive maps are not adjusted to match aerial backgrounds. This information is for reference purposes only and is not a legal document. Data maps contain errors. The seller and seller's agent are making known to all potential buyers that there may be variations between the location of the existing fence lines and the legal description of the deeded property. Seller and seller's agent make no warranties with regard to the location of the fence lines in relationship to the deeded property lines, nor does the Seller make any warranties or representations with regard to the specific acreage contained within the fenced property lines. Seller is selling the property in an "as is" condition, which includes the location of the fences as they exist. Boundaries shown on the accompanying maps are approximate, based on county parcel data. The maps are not to scale. The accuracy of the maps is not guaranteed. Prospective buyers are encouraged to verify fence lines, deeded property lines and acreages using a licensed surveyor at their own expense.



---

**Mossy Oak Properties Land and Farms Realty**  
101 Budleigh Street, Suite F  
Manteo, NC 27954  
(844) 480-5263  
<https://www.mossoakproperties.com/>

---

