

**39 acres of Recreational Timberland For Sale in Craven County!**  
Lot 7 Guinea Mill Rd  
Ernul, NC 28527

**\$139,900**  
39± Acres  
Craven County



## 39 acres of Recreational Timberland For Sale in Craven County! Ernul, NC / Craven County

---

### **SUMMARY**

#### **Address**

Lot 7 Guinea Mill Rd

#### **City, State Zip**

Ernul, NC 28527

#### **County**

Craven County

#### **Type**

Hunting Land, Recreational Land, Undeveloped Land, Timberland, Horse Property, Business Opportunity

#### **Latitude / Longitude**

35.285075 / -77.028552

#### **Acreage**

39

#### **Price**

\$139,900

#### **Property Website**

<https://www.mossyoakproperties.com/property/39-acres-of-recreational-timberland-for-sale-in-craven-county-craven-north-carolina/103659/>



## 39 acres of Recreational Timberland For Sale in Craven County! Ernul, NC / Craven County

---

### **PROPERTY DESCRIPTION**

**39 ± Acres of Prime Hunting & Recreational Land for Sale in Eastern North Carolina off of Rock Rd. Fully wooded with a balanced mix of open timber and thick cover, this tract supports deer, turkey, hogs, and bear and is ideal for hunting, ATV riding, and off-grid camping. Surveyed with cleared boundaries and easy road access, Lot 7 is a ready-to-use recreational getaway with strong potential.**

Located off Rock Rd with approximately 550 feet of road frontage in a quiet stretch of Eastern North Carolina, Lot 7 is a 39± acre tract that offers a great mix of privacy, accessibility, and strong recreational potential. With state-maintained road access to Rock Rd, getting to the property is easy, but once you step inside, it has that peaceful, backwoods feel folks are looking for.

The land is fully wooded with a naturally regenerated mix of timber, creating a good balance of open woods and thicker pockets of cover. This layout is ideal for wildlife, giving deer and other game places to feed, travel, and bed all on the same property. You'll find signs of whitetail deer, wild turkey, hogs, and black bear moving through the area, along with quail seen nearby. As it sits, the property is huntable, but there's plenty of room to make it even better with a few food plots, feeders, or small clearings to help draw and hold more game.

A recent survey has been completed, clearly marking the acreage and property lines. The boundaries have been opened up with a forestry mulcher, so you can easily ride or drive around the perimeter and know exactly where your lines are. That added access makes it simple to manage the land and get around without any guesswork.

Lot 7 is a great option for a recreational getaway. Whether you're riding ATVs, setting up a hunting camp, or just looking for a place to spend the weekend outdoors, this tract gives you the space and flexibility to do it. Power is located about 1.5 miles away, making it a good candidate for off-grid use or a simple cabin setup.

You're in a great location with easy commutes-about 30 minutes from New Bern and roughly 45 minutes from Greenville-close enough for supplies and dining, but far enough out to enjoy the quiet. NC Wildlife boat ramps along the Neuse River are also within a short drive giving you easy access to fishing and time on the water.

If you're looking for a well-rounded tract with good hunting potential, usable ground, and a laid-back Eastern NC setting, Lot 7 is worth checking out.

\* If you are interested in more acreage please reach out as there are additional parcels available \*

For more information on this and other land for sale in Craven County, contact Chase Furlough at [252-505-6893](tel:252-505-6893) or by email at [cfurlough@mossyoakproperties.com](mailto:cfurlough@mossyoakproperties.com), or visit [landandfarmsrealty.com](http://landandfarmsrealty.com).

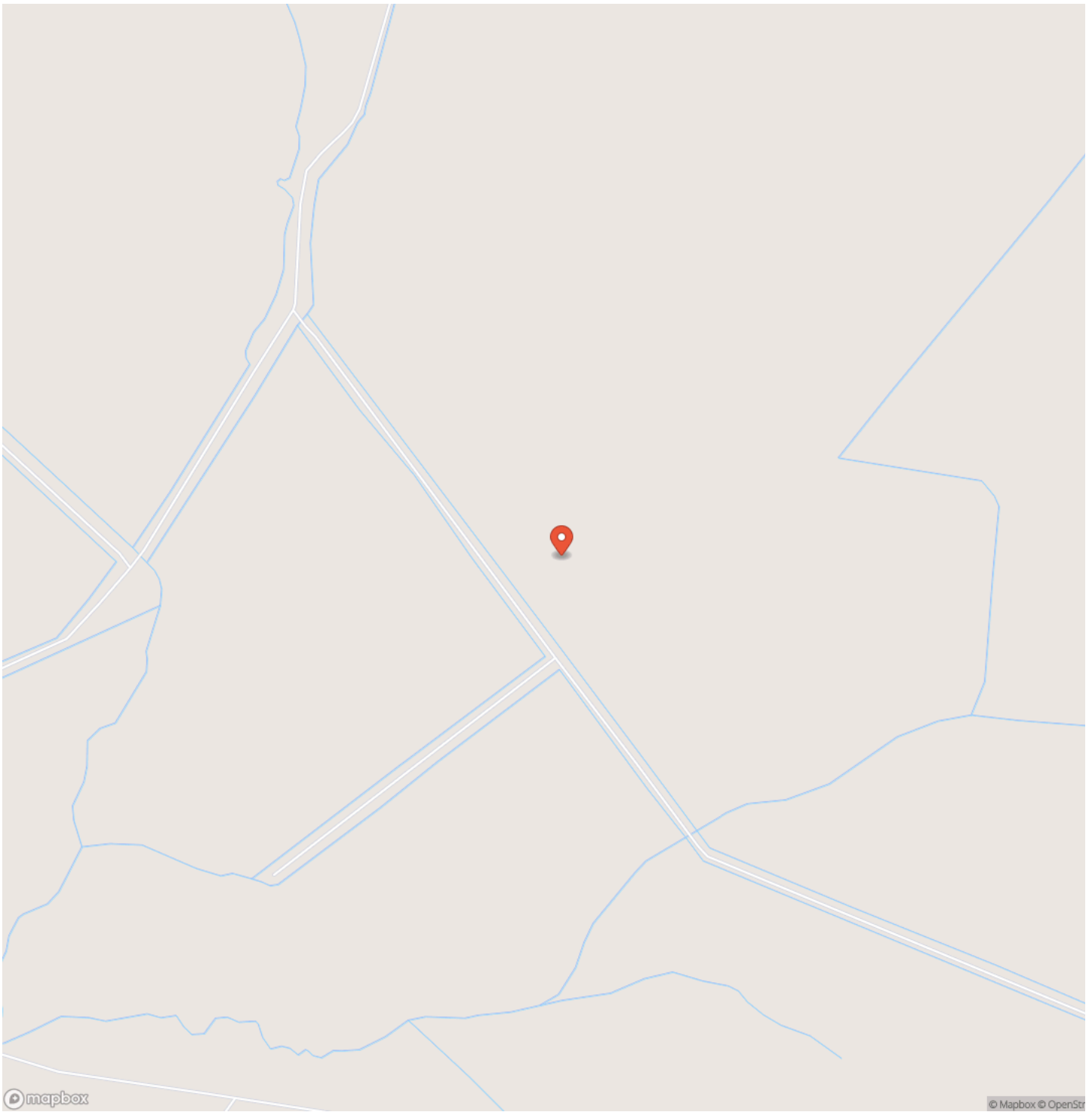


**39 acres of Recreational Timberland For Sale in Craven County!  
Ernul, NC / Craven County**

---

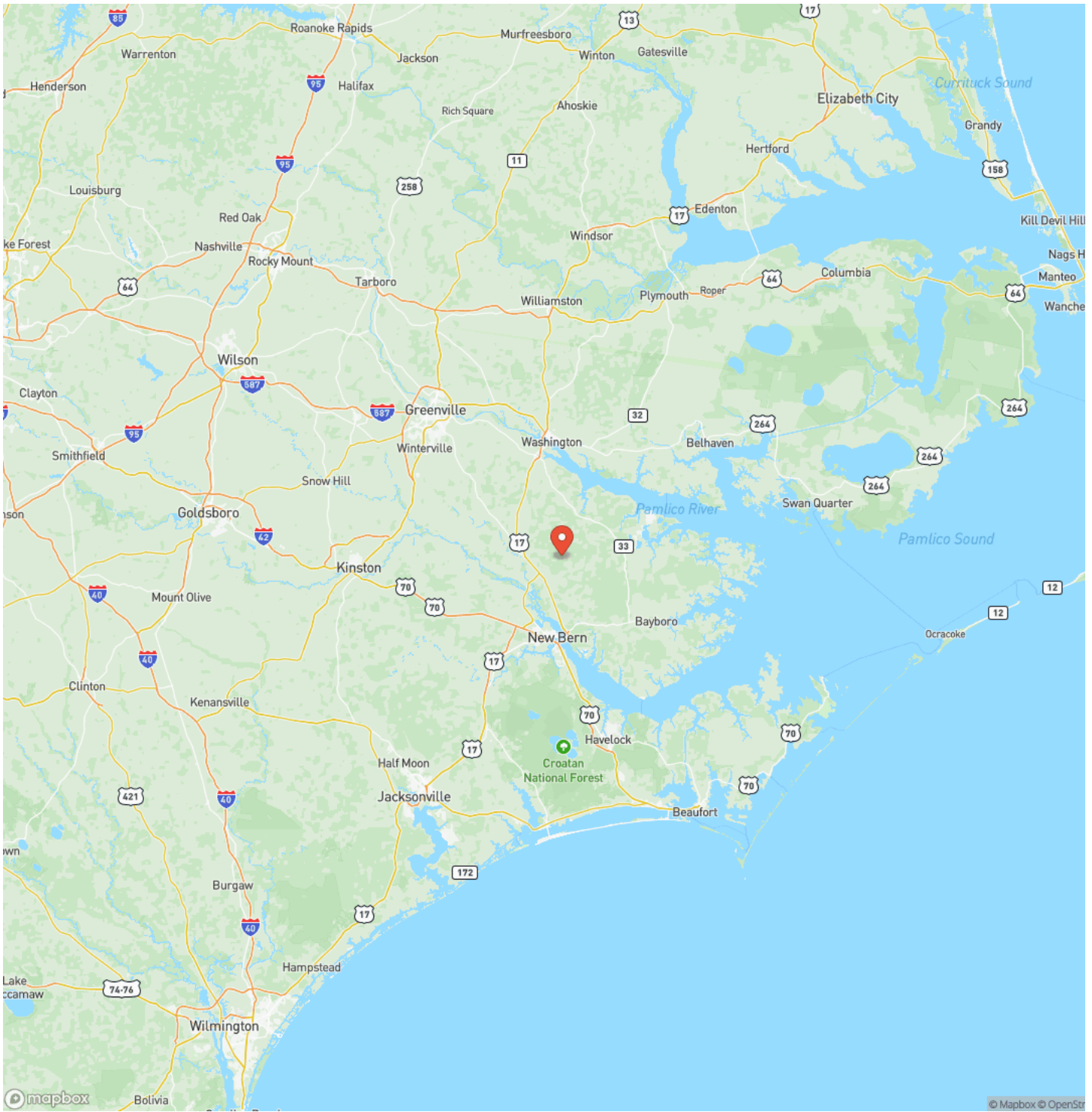


## Locator Map



**39 acres of Recreational Timberland For Sale in Craven County!  
Ernul, NC / Craven County**

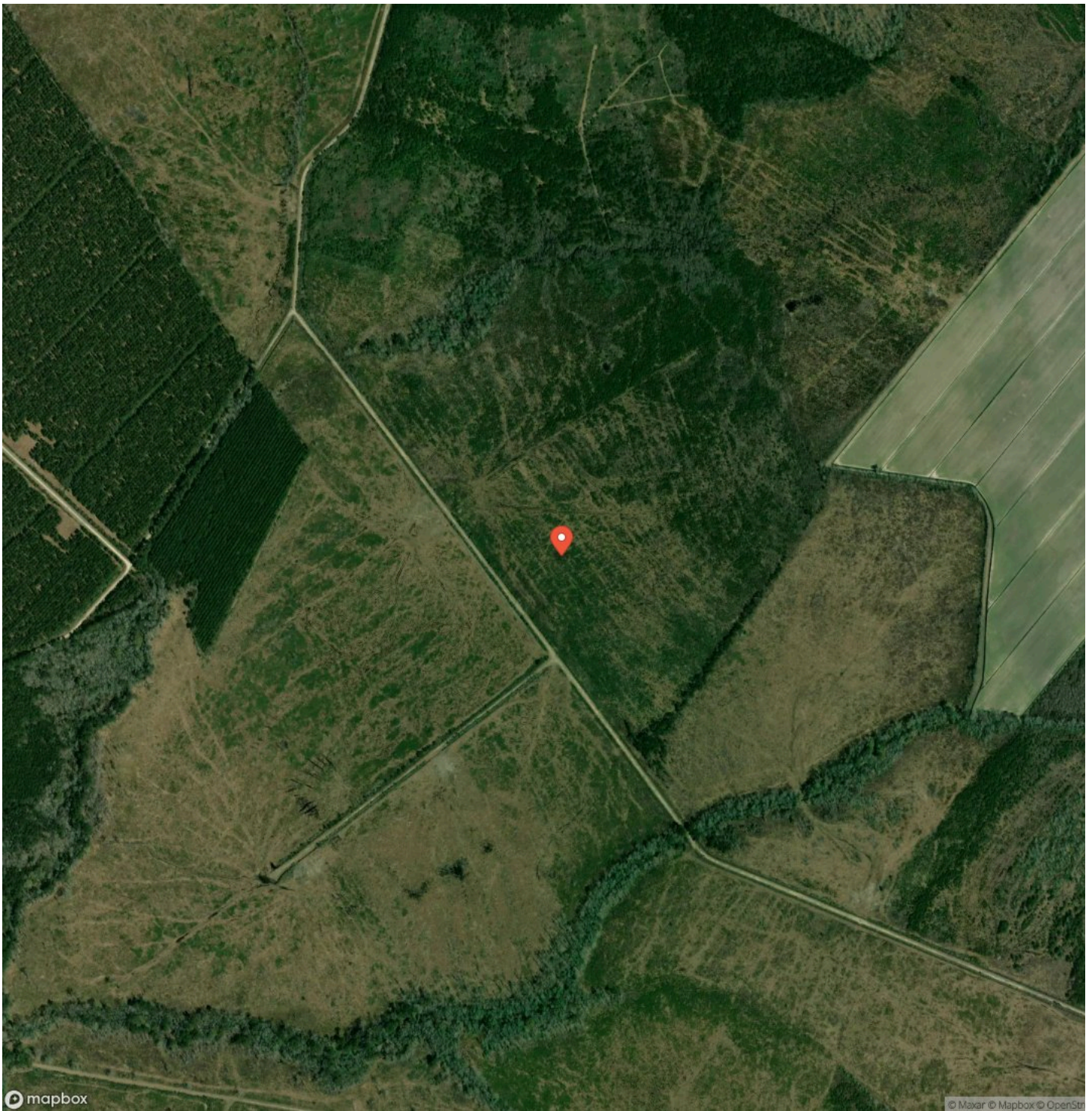
# Locator Map



39 acres of Recreational Timberland For Sale in Craven County!  
Ernul, NC / Craven County

---

## Satellite Map







## **DISCLAIMERS**

Information in this brochure is provided solely for information purposes and does not constitute an offer to sell or advertise real estate outside the states in which broker or agent licensed. The information presented has been obtained from sources deemed to be reliable, but is not guaranteed or warranted by the agent, broker, or the sellers of these properties. This offering is subject to errors, omissions, prior sale, price change, correction or withdrawal from the market without notice. All references to age, square footage, income, expenses, acreage, carrying capacity, and land classification, etc. are approximate. Prospective buyers are chargeable with and expected to conduct their own independent investigation of the information and the property and to rely only on those results. Sellers reserve the right to accept or reject any and all offers without liability to any buyer or cooperating broker.

Maps are provided for illustration purposes only, the accuracy is not warranted. Parcels on interactive maps are not adjusted to match aerial backgrounds. This information is for reference purposes only and is not a legal document. Data maps contain errors. The seller and seller's agent are making known to all potential buyers that there may be variations between the location of the existing fence lines and the legal description of the deeded property. Seller and seller's agent make no warranties with regard to the location of the fence lines in relationship to the deeded property lines, nor does the Seller make any warranties or representations with regard to the specific acreage contained within the fenced property lines. Seller is selling the property in an "as is" condition, which includes the location of the fences as they exist. Boundaries shown on the accompanying maps are approximate, based on county parcel data. The maps are not to scale. The accuracy of the maps is not guaranteed. Prospective buyers are encouraged to verify fence lines, deeded property lines and acreages using a licensed surveyor at their own expense.



---

**Mossy Oak Properties Land and Farms Realty**  
101 Budleigh Street, Suite F  
Manteo, NC 27954  
(844) 480-5263  
<https://www.mossoakproperties.com/>

---

