

**135 acres of Recreational Hunting Timber Land For Sale
in Craven County NC!**
Off of Guinea Mill Rd
Ernul, NC 28527

\$499,700
135± Acres
Craven County



**135 acres of Recreational Hunting Timber Land For Sale in Craven County NC!
Ernul, NC / Craven County**

SUMMARY

Address

Off of Guinea Mill Rd

City, State Zip

Ernul, NC 28527

County

Craven County

Type

Farms, Hunting Land, Recreational Land, Timberland, Commercial, Lot

Latitude / Longitude

35.294049 / -77.034690

Acreage

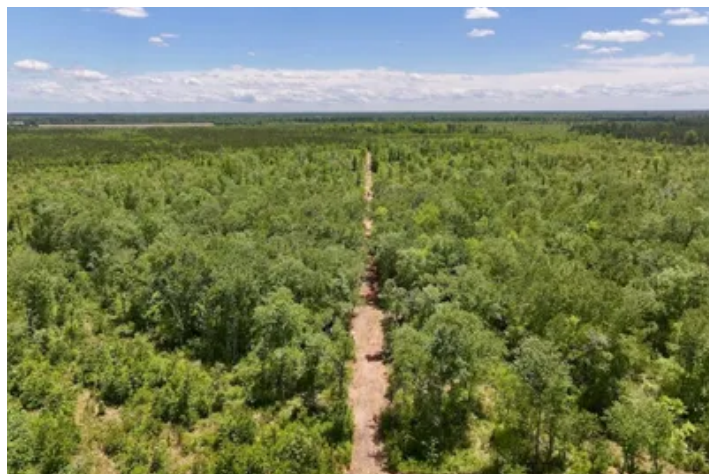
135

Price

\$499,700

Property Website

<https://www.mossoakproperties.com/property/135-acres-of-recreational-hunting-timber-land-for-sale-in-craven-county-nc-craven-north-carolina/105721/>



135 acres of Recreational Hunting Timber Land For Sale in Craven County NC! Ernul, NC / Craven County

PROPERTY DESCRIPTION

135± Acres of Prime Hunting & Recreational Land for Sale in Eastern North Carolina. Featuring 18± year old pine stands, natural oak and maple regrowth, established ATV trails, and thousands of feet bordering row crop farmland, this tract offers excellent habitat for deer, turkey, hogs, bear, and quail. Ideal for hunting, camping, ATV riding, and timber investment, with seller financing and additional acreage options potentially available.

Located in the heart of Eastern North Carolina, this 135± acre recreational tract offers an outstanding combination of hunting habitat, timber investment potential, and room to enjoy the outdoors. With a diverse mix of timber types, strong wildlife presence, and excellent recreational opportunities, this property is well suited for hunters, investors, and anyone looking for a private getaway in the country.

The property features a strong balance of approximately 18-year-old pine stands along with natural regrowth hardwood areas made up of oak and maple. The mix of thicker pine cover and more open hardwood sections creates ideal habitat for wildlife by providing bedding, travel corridors, and natural food sources all within the same tract. Thousands of feet bordering active row crop farmland add even more appeal, as deer and other game regularly move between the agricultural fields and the security cover found throughout the property.

Wildlife sign can be found across the tract, including evidence of whitetail deer, wild turkey, hogs, black bear, and quail seen in the surrounding area. Whether you enjoy stand hunting, running trail cameras, or improving land specifically for wildlife management, this property offers a strong foundation to create an exceptional hunting setup. Adding food plots, feeders, or selective clearing would further improve the property's ability to attract and hold game year-round.

Established access points and interior ATV trails allow easy travel through much of the property, making it simple to hunt, ride, or manage the land. The tract has recently surveyed boundaries with clearly defined property lines, giving buyers added confidence and usability from day one.

This property is ideal for recreational use, whether you're looking for a private hunting tract, ATV getaway, camping property, or long-term land investment. Power is located nearby, offering options for a hunting cabin, camp, or future homesite.

Seller financing may be available, and the seller is open to reviewing offers. Buyers looking for additional acreage or a smaller tract may also have other purchase options available depending on their needs.

Conveniently located within reach of New Bern and Greenville, this property provides the quiet and privacy of rural Eastern North Carolina while still being close enough to town for dining, shopping, and supplies. Nearby NC Wildlife boat ramps along the Neuse River also provide easy access to boating and fishing opportunities.

Recreational tracts with this kind of size, habitat diversity, and hunting potential are becoming harder to find in Eastern North Carolina. Whether you're searching for a hunting property, timber investment, or private recreational retreat, this 135± acre tract deserves a closer look.

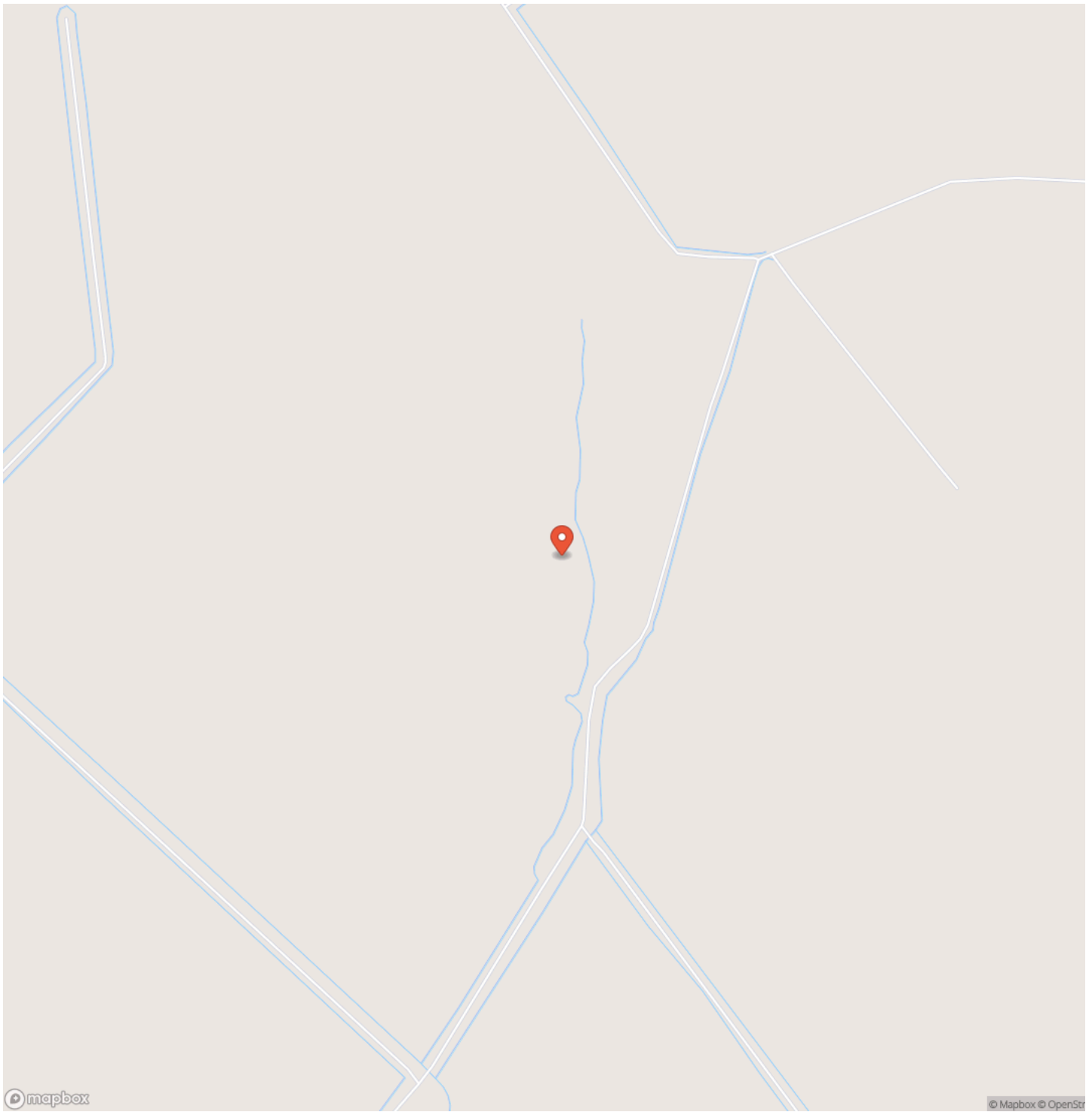
For more information on this and other land for sale in Craven County, contact Chase Furlough at [252-505-6893](tel:252-505-6893) or by email at cfurlough@mossyoakproperties.com, or visit landandfarmsrealty.com.



135 acres of Recreational Hunting Timber Land For Sale in Craven County NC!
Ernul, NC / Craven County

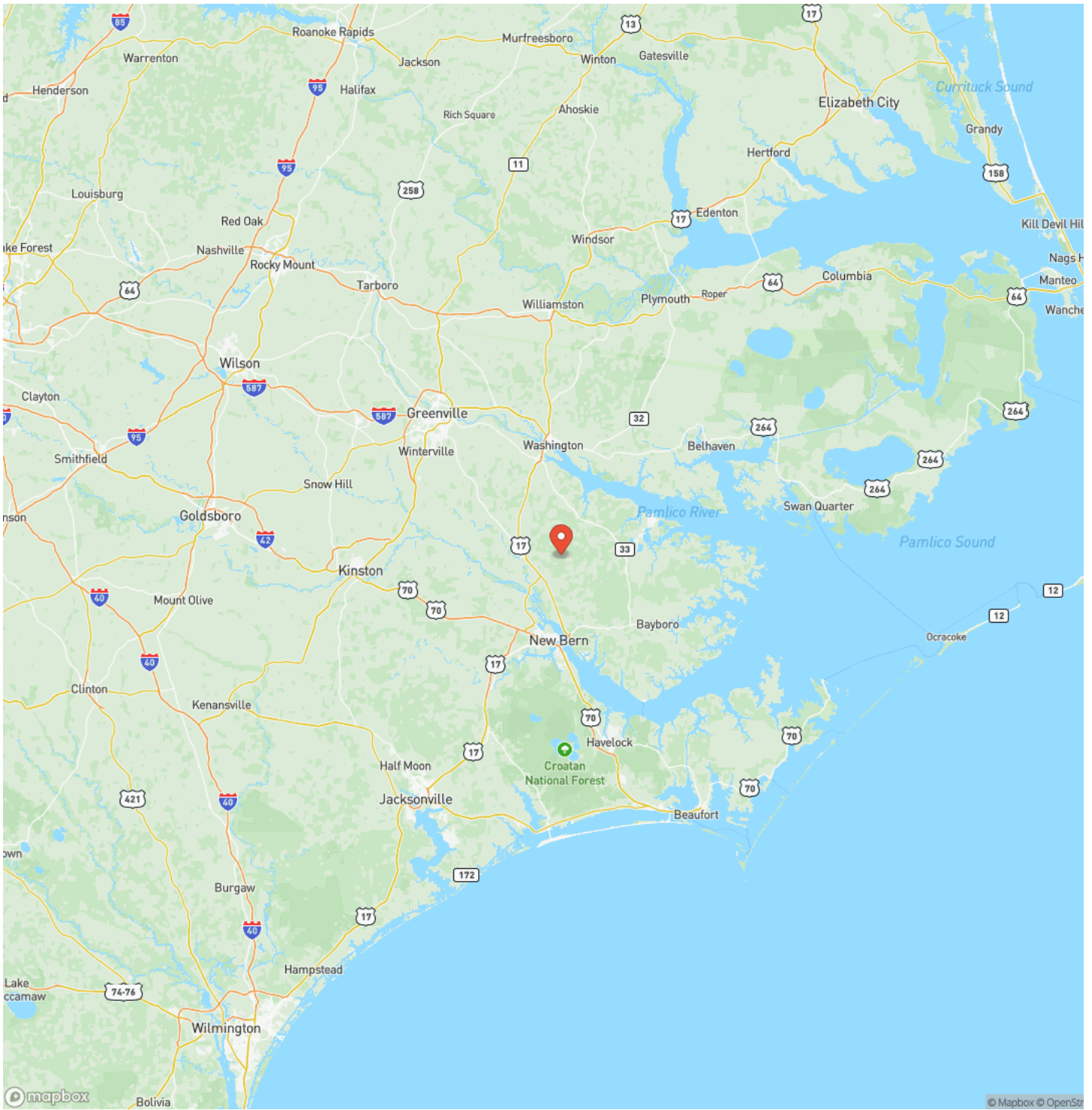


Locator Map

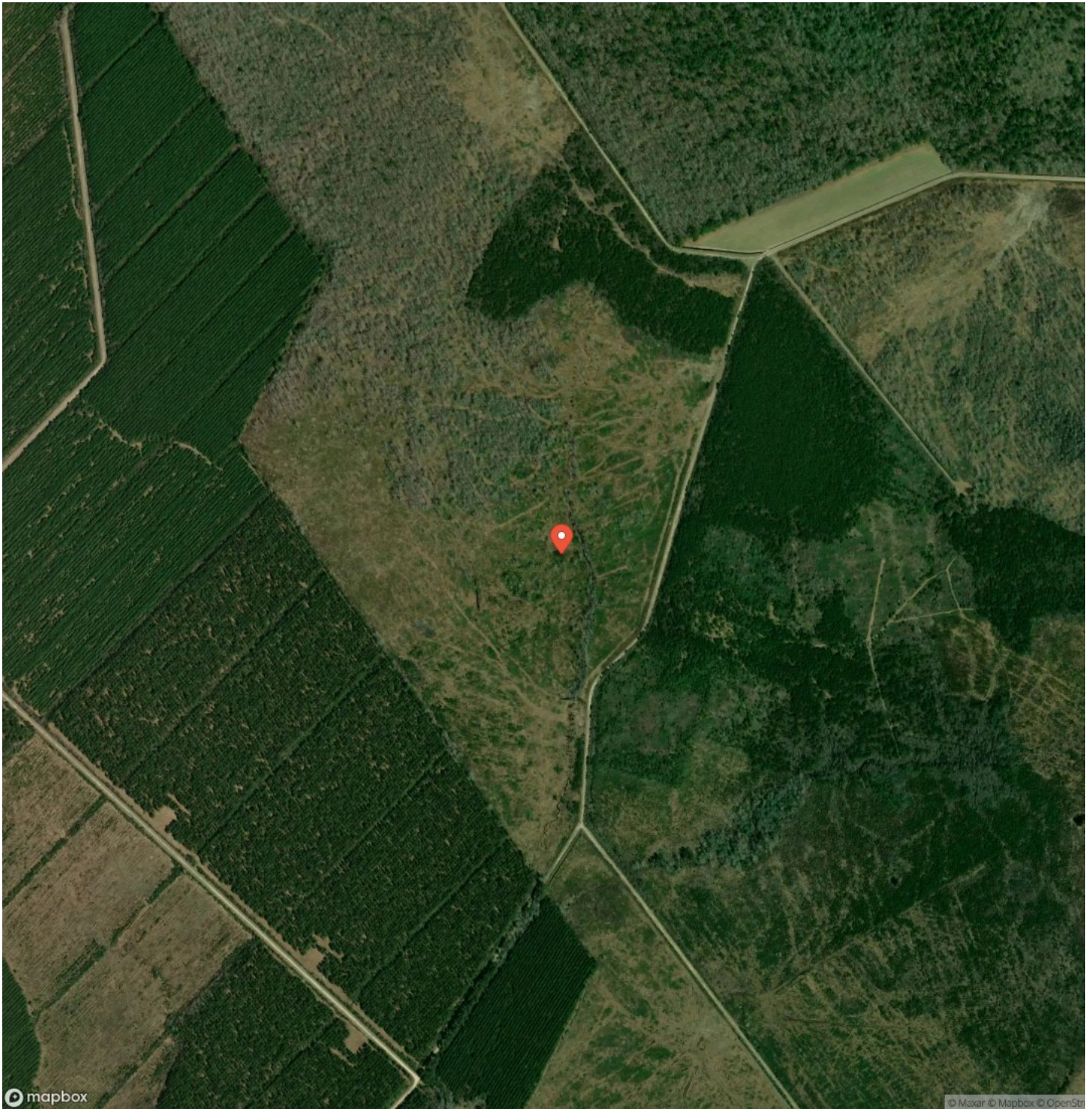


135 acres of Recreational Hunting Timber Land For Sale in Craven County NC!
Ernul, NC / Craven County

Locator Map



Satellite Map



DISCLAIMERS

Information in this brochure is provided solely for information purposes and does not constitute an offer to sell or advertise real estate outside the states in which broker or agent licensed. The information presented has been obtained from sources deemed to be reliable, but is not guaranteed or warranted by the agent, broker, or the sellers of these properties. This offering is subject to errors, omissions, prior sale, price change, correction or withdrawal from the market without notice. All references to age, square footage, income, expenses, acreage, carrying capacity, and land classification, etc. are approximate. Prospective buyers are chargeable with and expected to conduct their own independent investigation of the information and the property and to rely only on those results. Sellers reserve the right to accept or reject any and all offers without liability to any buyer or cooperating broker.

Maps are provided for illustration purposes only, the accuracy is not warranted. Parcels on interactive maps are not adjusted to match aerial backgrounds. This information is for reference purposes only and is not a legal document. Data maps contain errors. The seller and seller's agent are making known to all potential buyers that there may be variations between the location of the existing fence lines and the legal description of the deeded property. Seller and seller's agent make no warranties with regard to the location of the fence lines in relationship to the deeded property lines, nor does the Seller make any warranties or representations with regard to the specific acreage contained within the fenced property lines. Seller is selling the property in an "as is" condition, which includes the location of the fences as they exist. Boundaries shown on the accompanying maps are approximate, based on county parcel data. The maps are not to scale. The accuracy of the maps is not guaranteed. Prospective buyers are encouraged to verify fence lines, deeded property lines and acreages using a licensed surveyor at their own expense.



Mossy Oak Properties Land and Farms Realty
101 Budleigh Street, Suite F
Manteo, NC 27954
(844) 480-5263
<https://www.mossoakproperties.com/>

