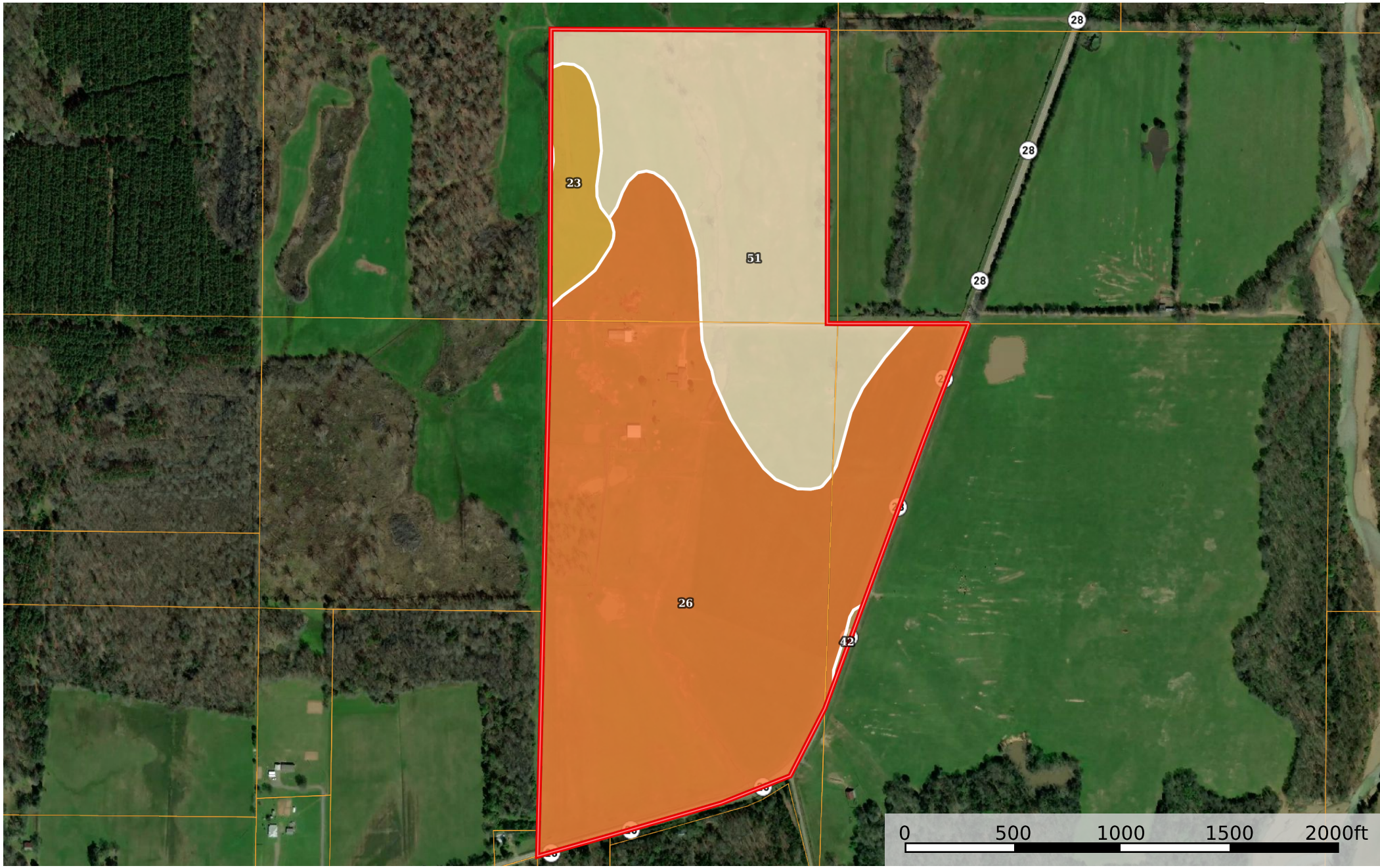


Underwood 120

Arkansas, AC +/-



 Boundary

Boundary 119.77 ac

SOIL CODE	SOIL DESCRIPTION	ACRES	%	CPI	NCCPI	CAP
26	Leadvale silt loam, 1 to 3 percent slopes	76.15	63.58	0	52	2e
51	Taft silt loam, 0 to 2 percent slopes	38.07	31.79	0	48	3w
23	Guthrie silt loam, 0 to 1 percent slopes, rarely flooded	5.32	4.44	0	47	3w
42	Pickwick silt loam, 1 to 3 percent slopes	0.23	0.19	0	85	2e
TOTALS		119.77(*)	100%	-	50.57	2.36

(*) Total acres may differ in the second decimal compared to the sum of each acreage soil. This is due to a round error because we only show the acres of each soil with two decimal.

