

DeSoto Lake River Camp Behind the Levee!
77 Desoto Lake Road
Alligator, MS 38720

\$70,000
0.200± Acres
Bolivar County



DeSoto Lake River Camp Behind the Levee!
Alligator, MS / Bolivar County

SUMMARY

Address

77 Desoto Lake Road

City, State Zip

Alligator, MS 38720

County

Bolivar County

Type

Residential Property, Single Family

Latitude / Longitude

34.150216 / -90.808831

Dwelling Square Feet

1288

Bedrooms / Bathrooms

1 / 1

Acreage

0.200

Price

\$70,000

Property Website

<https://www.mossyoakproperties.com/property/desoto-lake-river-camp-behind-the-levee-bolivar-mississippi/95813/>



DeSoto Lake River Camp Behind the Levee!

Alligator, MS / Bolivar County

PROPERTY DESCRIPTION

DeSoto Lake River Camp Behind the Levee

77 DeSoto Lake Road (also known as 77 Old Levee Road), Alligator, Mississippi

Designed with the outdoorsman in mind, this classic Delta river camp sits just behind the levee on high ground and offers quick access to prime fishing, boating, and waterfowl habitat. Located less than a quarter-mile from DeSoto Trail Landing, the property provides easy boat access to DeSoto Lake and the Mississippi River—ideal for fishermen, hunters, and those seeking a true Delta getaway.

Property Overview

- 2 lots
- 2 bedrooms, 1 bathroom
- Built in 1995
- Cabin-style home behind the levee
- Metal roof
- Cypress and Cedar exterior
- Beamed ceilings
- Located on a hill area
- Water source: well

Interior Features

- Kitchen overlooking a large, open living area—perfect for gathering after a day outdoors
- Sunroom / sleeping porch off the living room, ideal for extra bunks during hunting season
- Wood-burning stove for cozy winter evenings
- Window units and space heaters for heating and cooling
- Includes refrigerator and gas range
- 5' x 2' Fortress safe included

Outdoor Living

- Back deck overlooking wooded surroundings with DeSoto Lake beyond it
- Covered grilling area—great for fish fries, wild-game cookouts, and camp gatherings
- Quiet, wooded setting offering privacy and a true camp atmosphere

Storage & Extras

- Approx. 300 sq ft storage building (25' x 12')
- Storage shed with electric service
- Ideal for boats, decoys, gear, tools, and outdoor equipment

Location Highlights

- Less than 1/5 mile to DeSoto Trail Landing boat launch
- Direct access to DeSoto Lake, which connects to the Mississippi River
- Excellent base for fishing, duck hunting, and river recreation
- Approximately 2 miles from Rena Lara
- Less than 15 miles to Clarksdale

Notes

- Address may appear in some systems as 77 Old Levee Road

Presented by:

Jones Luster

Mossy Oak Properties, BRE

2800 MLK Blvd

Clarksdale, MS 38614

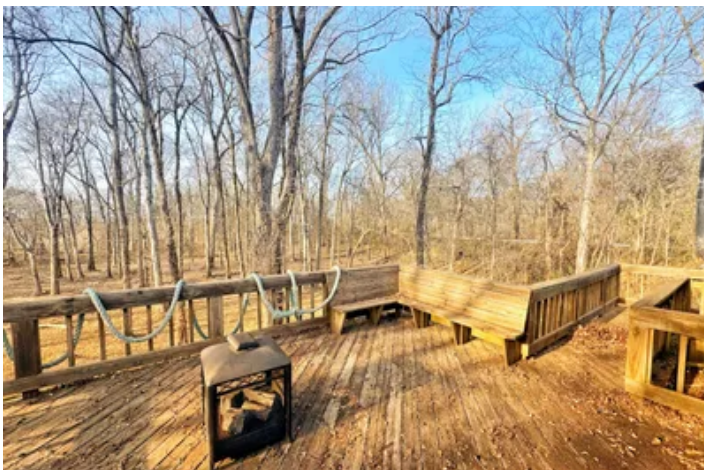
Office: [662-624-8200](tel:662-624-8200)

Cell: [662-902-7592](tel:662-902-7592)

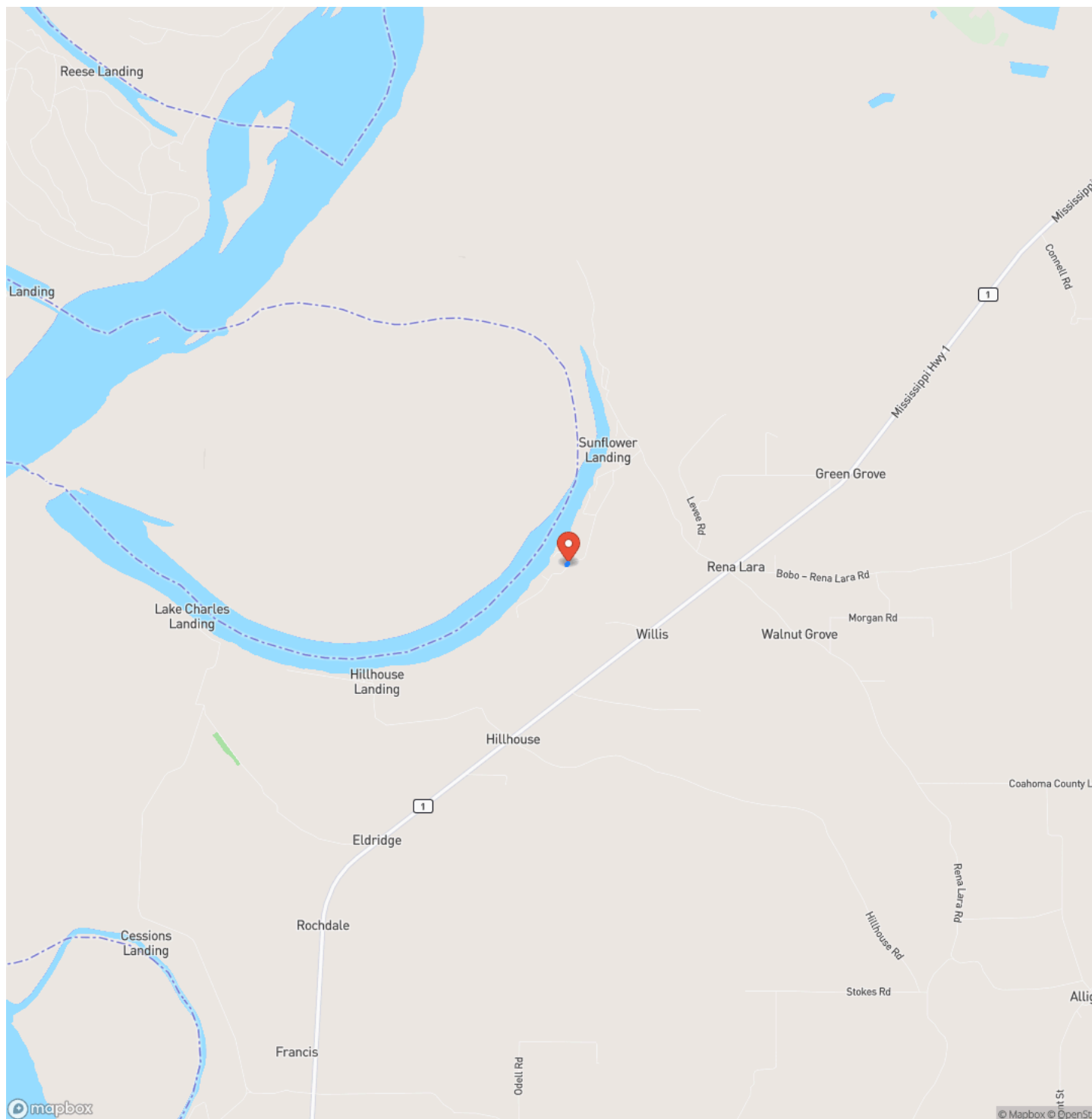
Email: jluster@mossyoakproperties.com



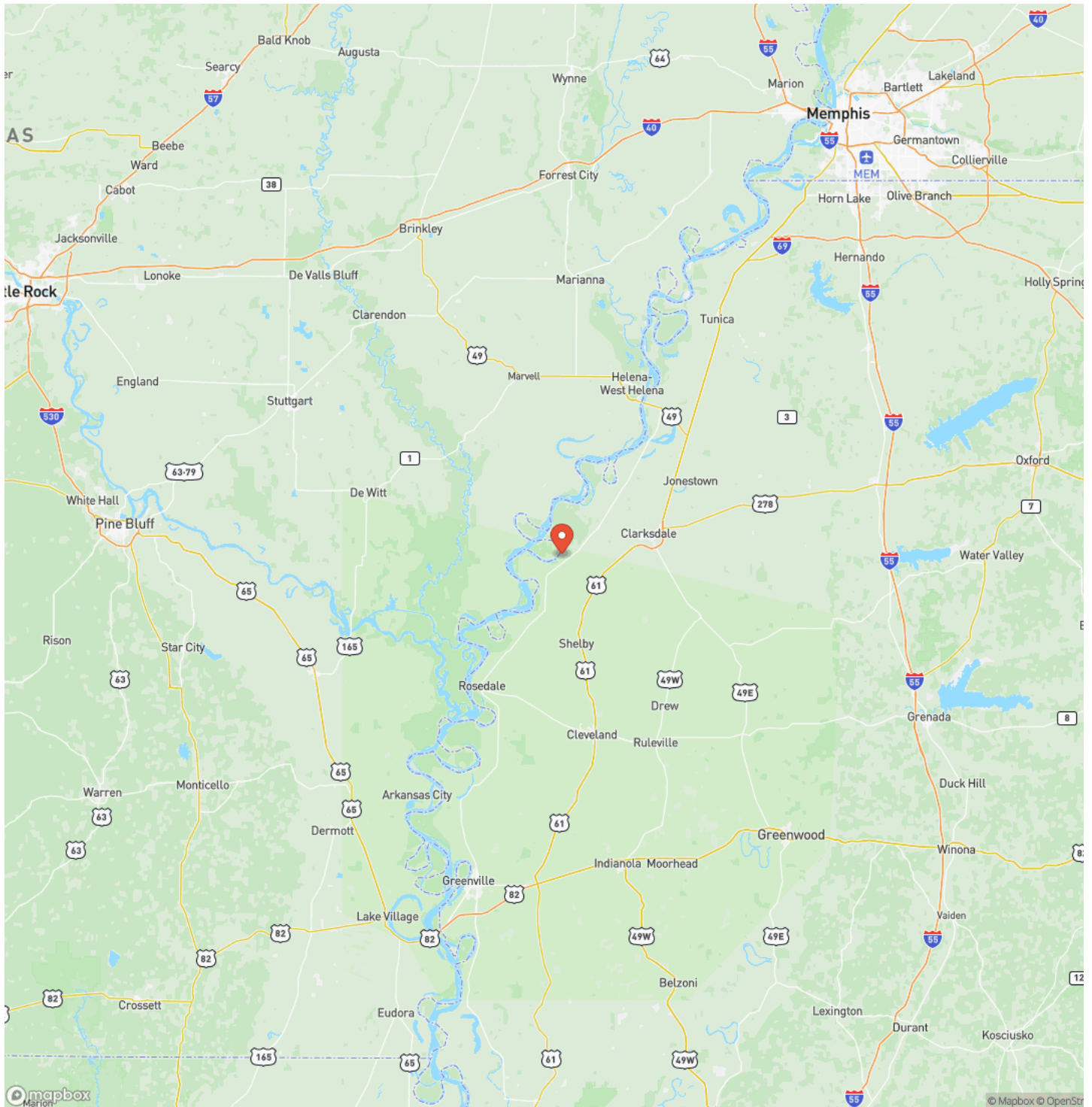
DeSoto Lake River Camp Behind the Levee!
Alligator, MS / Bolivar County



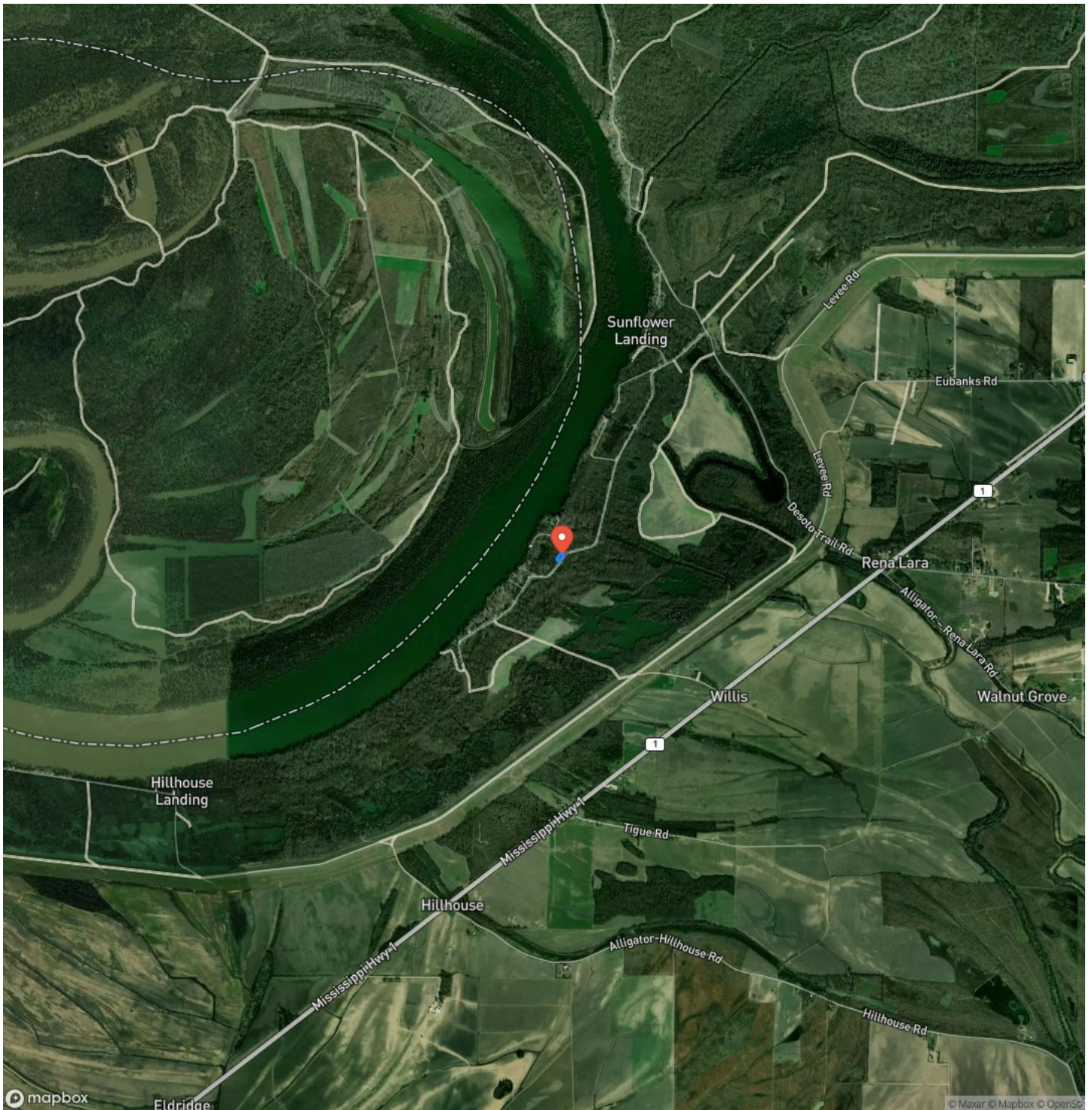
Locator Map



Locator Map



Satellite Map



DeSoto Lake River Camp Behind the Levee! Alligator, MS / Bolivar County

LISTING REPRESENTATIVE

For more information contact:



Representative

Jones Luster

Mobile

(662) 902-7592

Office

(662) 624-8282

Email

jluster@mossyoakproperties.com

Address

2800 Martin Luther King Blvd

City / State / Zip

NOTES

[illegible]

[illegible]

MORE INFO ONLINE:
MossyOakProperties.com

DISCLAIMERS

Information in this brochure is provided solely for information purposes and does not constitute an offer to sell or advertise real estate outside the states in which broker or agent licensed. The information presented has been obtained from sources deemed to be reliable, but is not guaranteed or warranted by the agent, broker, or the sellers of these properties. This offering is subject to errors, omissions, prior sale, price change, correction or withdrawal from the market without notice. All references to age, square footage, income, expenses, acreage, carrying capacity, and land classification, etc. are approximate. Prospective buyers are chargeable with and expected to conduct their own independent investigation of the information and the property and to rely only on those results. Sellers reserve the right to accept or reject any and all offers without liability to any buyer or cooperating broker.

Maps are provided for illustration purposes only, the accuracy is not warranted. Parcels on interactive maps are not adjusted to match aerial backgrounds. This information is for reference purposes only and is not a legal document. Data maps contain errors. The seller and seller's agent are making known to all potential buyers that there may be variations between the location of the existing fence lines and the legal description of the deeded property. Seller and seller's agent make no warranties with regard to the location of the fence lines in relationship to the deeded property lines, nor does the Seller make any warranties or representations with regard to the specific acreage contained within the fenced property lines. Seller is selling the property in an "as is" condition, which includes the location of the fences as they exist. Boundaries shown on the accompanying maps are approximate, based on county parcel data. The maps are not to scale. The accuracy of the maps is not guaranteed. Prospective buyers are encouraged to verify fence lines, deeded property lines and acreages using a licensed surveyor at their own expense.

Mossy Oak Properties Bottomland Real Estate

5795 Highway 45 Alt S

West Point, MS 39773

(662) 495-1121

MossyOakProperties.com

