

CORDER

AND ASSOCIATES, LLC



Premier Recreation on Parcel 6
Parcel 6 Ridge Road, Townsend, MT 59644

Offered at \$1,390,000



Presented Exclusively by
Trampus Corder, Broker
Staci Corder, Broker

833-783-3224 toll free
406-622-3224 office
Corderland@gmail.com



Property Information

Lot Size: 826.37 deeded acres

Taxes: \$548.51 (2022)

Legal: Lengthy

Utilities: Power at northwest corner across Ridge Road

Water: Undeveloped and developed springs

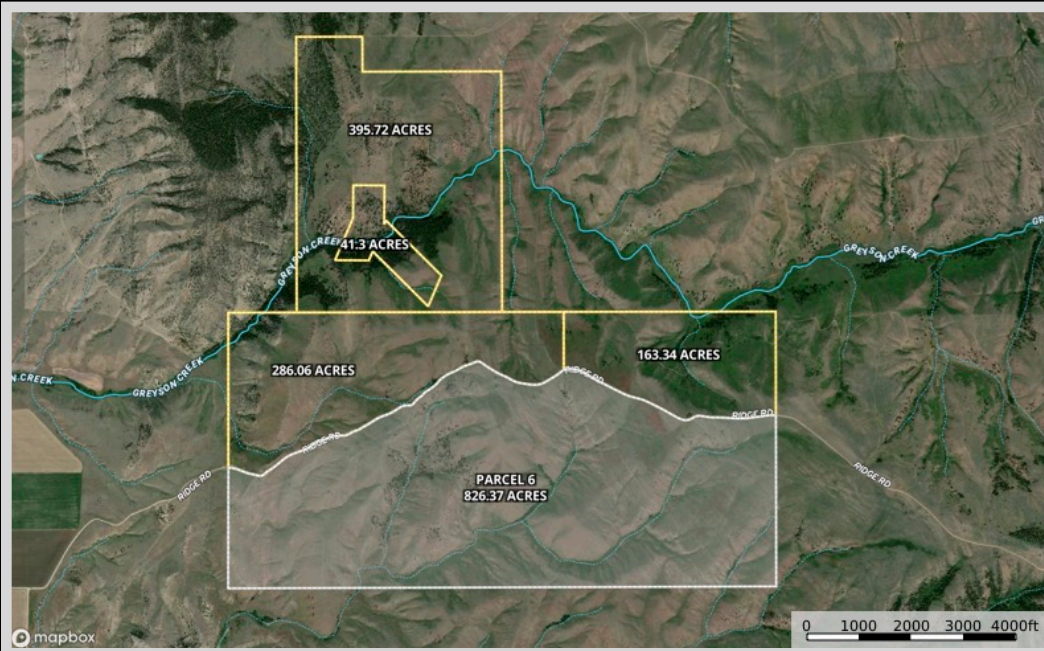
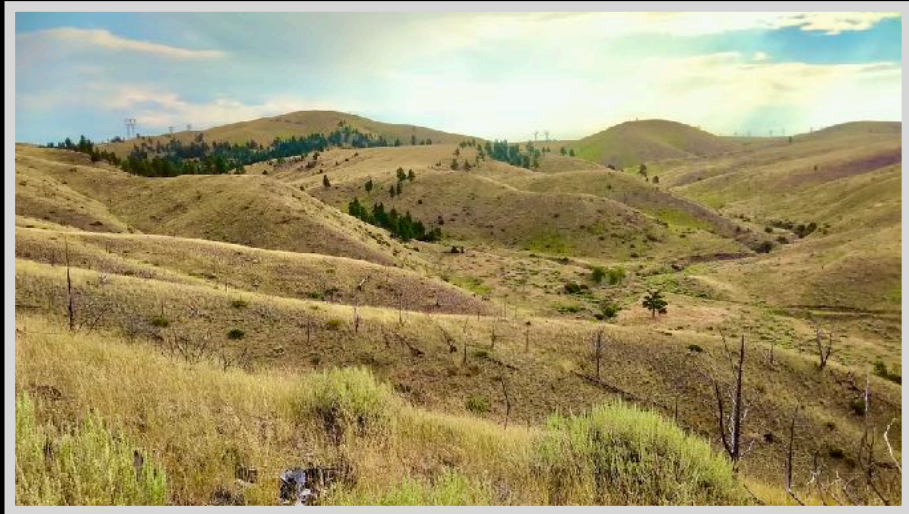
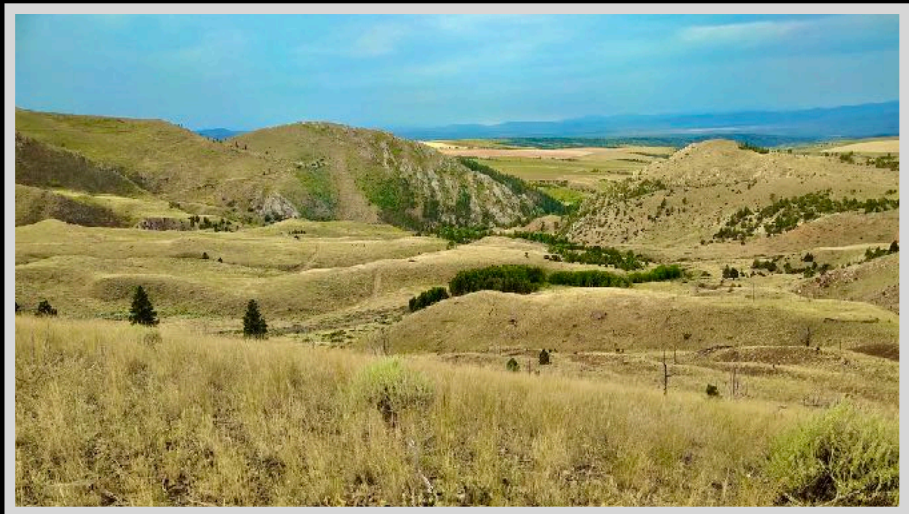
Hunting District: 391

Access: Ridge Road

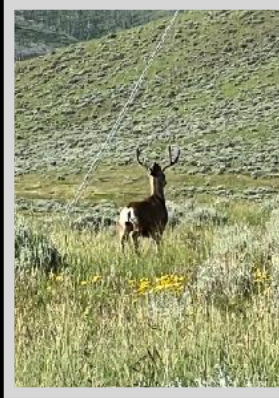
Executive Summary

Discover abundant wildlife and endless recreational opportunities across Parcel 6 of Ridge Road Ranch. The ample mountain grazing ground of 826.37 acres can supply your cattle or horses with plenty of nutrients. The captivating natural settings display jaw-dropping scenes and panoramic views. The versatile property lies south of Ridge Road and enjoys views of the Big Belt Mountains. Power lines parallel the road and electricity is available at the northwest corner. Water is abundant in the form of natural and undeveloped springs flowing seasonally along the entire corridor of this wildlife wonderland. The diverse landscape makes for a thrilling

camping spot or a perfect place for your hunting headquarters. Whether you aspire to a thriving cattle operation, exclusive hunting grounds, or simply a premier recreational landscape in Montana, Parcel 6 encompasses it all, and additional acres are for sale to contribute to the ultimate legacy ranch. Resident elk thrive on the property alongside a variety of other wildlife. Thrive alongside the world-class elk and wildlife and breathe in the fresh mountain air leaving behind all of your cares!



The information is provided by outside sources and deemed reliable but not guaranteed by the brokerage firm, its agents or representatives. Buyers and their agents are encouraged to conduct due diligence, and verify to their satisfaction, the information contained herein regarding property.



Local Area

Between all of the major cities in Montana is the county seat of Broadwater County, Townsend. Located in the Missouri River Valley between the Big Belt and the Elkhorn Mountains, where the Missouri River opens into Canyon Ferry Lake (Montana's 3rd largest body of water), Townsend was named by railroad officials in 1883. It was then that a rail stop was made because businesses were becoming more established to support the gold mining in this region. Land lots then were just \$5 apiece! Famed explorers Lewis and Clark traveled through in 1805. The mighty Missouri River borders the town, and the area is nicknamed the "Valley of Adventure" because of the vast outdoor opportunities that are readily available. Large areas of BLM and state land surround the town. Townsend is on Canyon Ferry Lake which is one of Montana's most sought-after recreational spots. The lake provides activities of boating, ice boat sailing, year-round fishing for Trout, Salmon, Perch, and Walleye, camping, sightseeing, picnicking, hiking, hunting, and swimming. It is also conveniently near 4 major ski areas ranging from 1.5 to 3 hours away. In addition, the Broadwater County Museum is located in Townsend and holds unique artifacts such as an authentic painted buffalo robe. A short drive of 35 minutes will get you to the state capital of Helena.

Area Attractions

Canyon Ferry Lake

The Canyon Ferry Valley is rich with recreational opportunities! The lake spans 25 miles leaving plenty of room to boat, fish, sport fish, sail, swim, water ski, and more. It is proudly Montana's 3rd largest body of water and a popular destination for outdoor enthusiasts. Twenty-four recreation sites are maintained by the Bureau of Reclamation. Fishing is phenomenal and you can reel in Trout, Salmon, Perch, and Walleye year-round. When the snow flies, the lake is dotted with ice fishing huts and is also utilized for ice skating and iceboat sailing. In addition, there is the Canyon Ferry Wildlife Management Area which encompasses 5,129 acres. The goal of this area is to maintain the existing habitat and provide a place for wildlife viewing and hunting. Archery, shotgun, muzzleloader, and traditional handguns can be used to hunt white-tailed deer and birds such as pheasants, ducks, and Canadian geese. The area is superb for viewing migratory or nesting birds such as Canada geese, double-crested cormorants, American white pelicans, Caspian tern, and ospreys. White-tailed deer, beaver, raccoon, mink, red fox, and sometimes otters and moose can be observed.

Hauser Reservoir

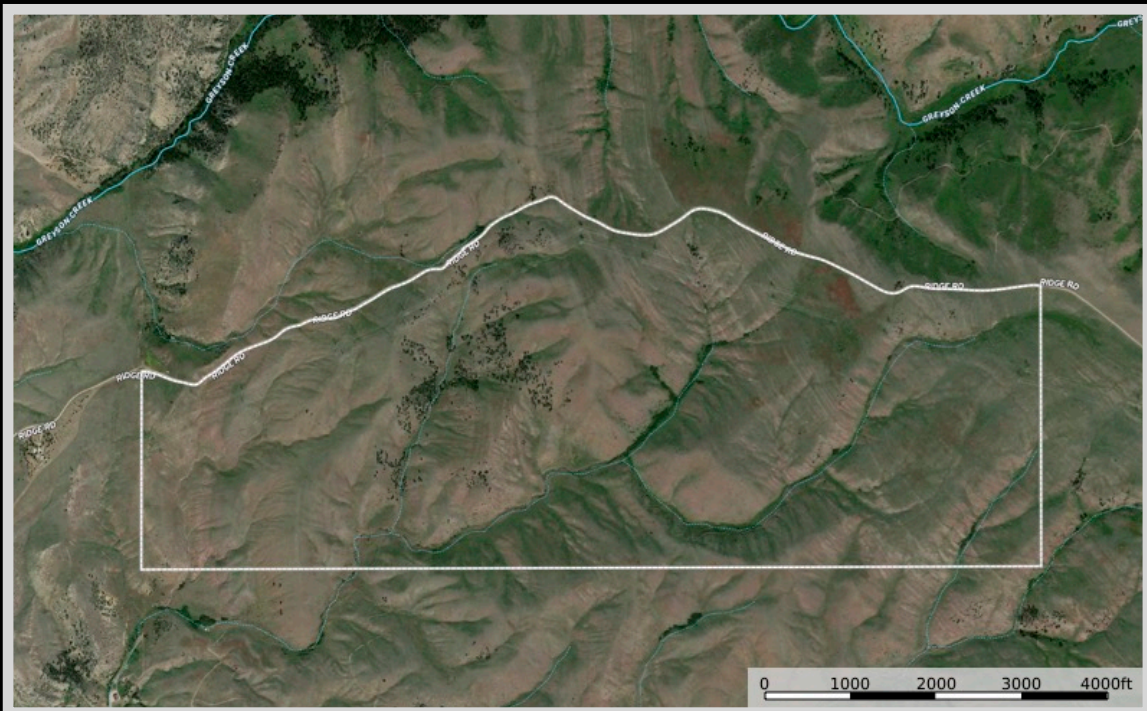
Hauser Lake is a 3,200-acre reservoir on the Missouri River created by Hauser Dam. The lake yields rainbow and brown trout, walleye, and perch. It is an extremely popular take-off point for weekend boating, fishing, and water skiing. There are scenic public campgrounds on Hauser Lake, White Sandy (BLM), Devil's Elbow (BLM), Riverside (BOR), and a few yards further from Black Sandy State Park (MFWP).

Hunting

The area around Townsend, Montana is well-known for prominent elk hunting. The designated property lies within Hunting District 391 for deer/elk/lion. Elk herds have been caught on film by the landowner and are known to travel these areas and up along the Little Belt Mountains. Permits can be purchased for a general deer license or general elk license to hunt brow-tined bull or antlerless elk. There is a specific season for hunting brow-tined bull elk on National Forest Land as well.

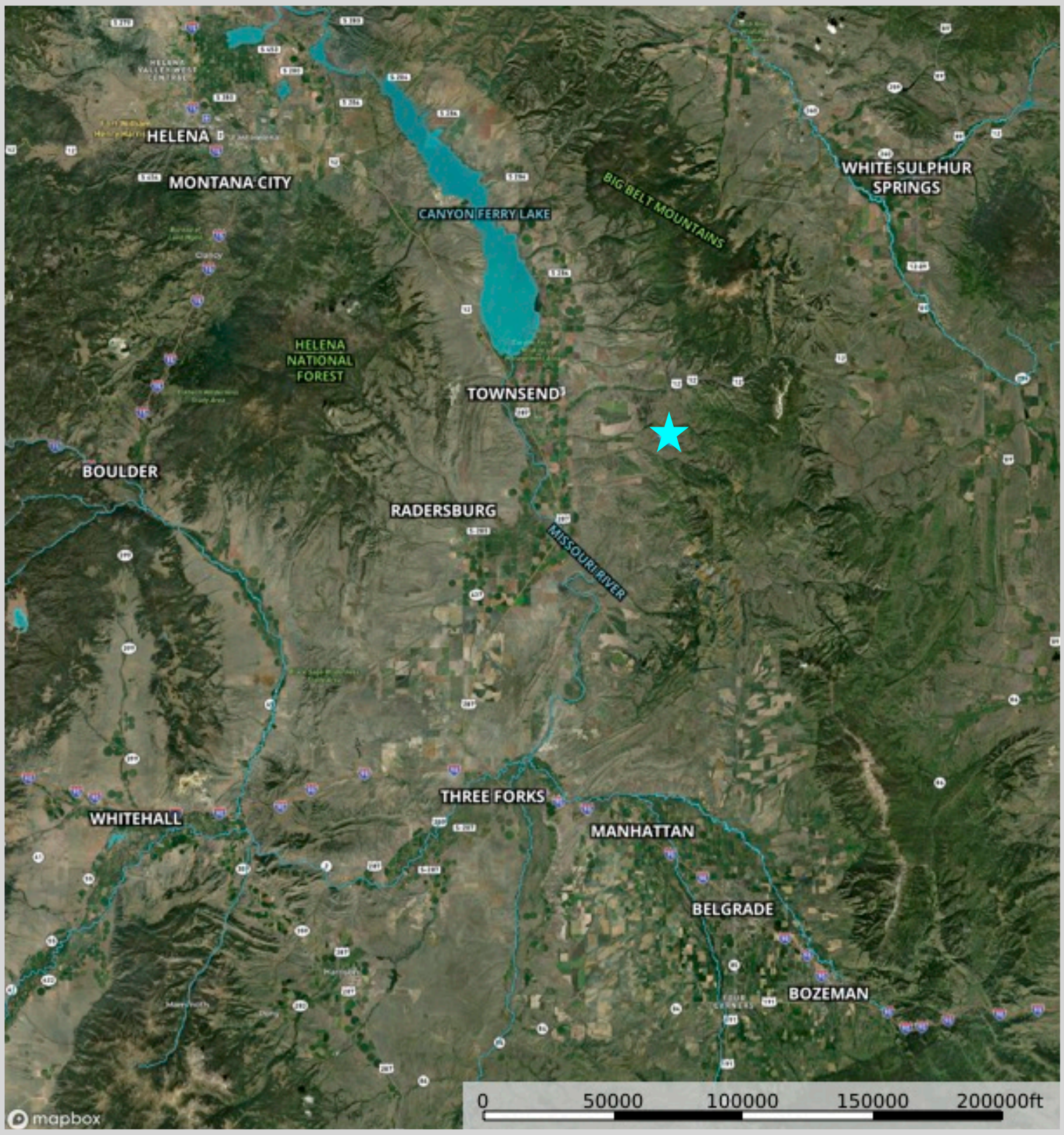
The Missouri River

The mighty Missouri River is the longest in North America flowing over 2,341 miles. The Missouri River flows from its source near Three Forks, Montana until it joins with the prevalent Mississippi River at St. Louis, Missouri. The Upper Missouri River was designated as a component of the National Wild and Scenic River System in 1976 beginning at Fort Benton, Montana and running 149 miles downstream. The Missouri River is a remarkably valuable life-giving source with 49 species of fish residing in its waters. The Missouri River is also a valuable historical component of the Lewis and Clark National Historic Trail. You can enjoy floating, fishing, hiking, hunting, and camping on or around the river and view 60 species of mammals, 233 species of birds, and 20 species of amphibians and reptiles!



The information is provided by outside sources and deemed reliable but not guaranteed by the brokerage firm, its agents or representatives. Buyers and their agents are encouraged to conduct due diligence, and verify to their satisfaction, the information contained herein regarding property.

Property Map



The information is provided by outside sources and deemed reliable but not guaranteed by the brokerage firm, its agents or representatives. Buyers and their agents are encouraged to conduct due diligence, and verify to their satisfaction, the information contained herein regarding property.