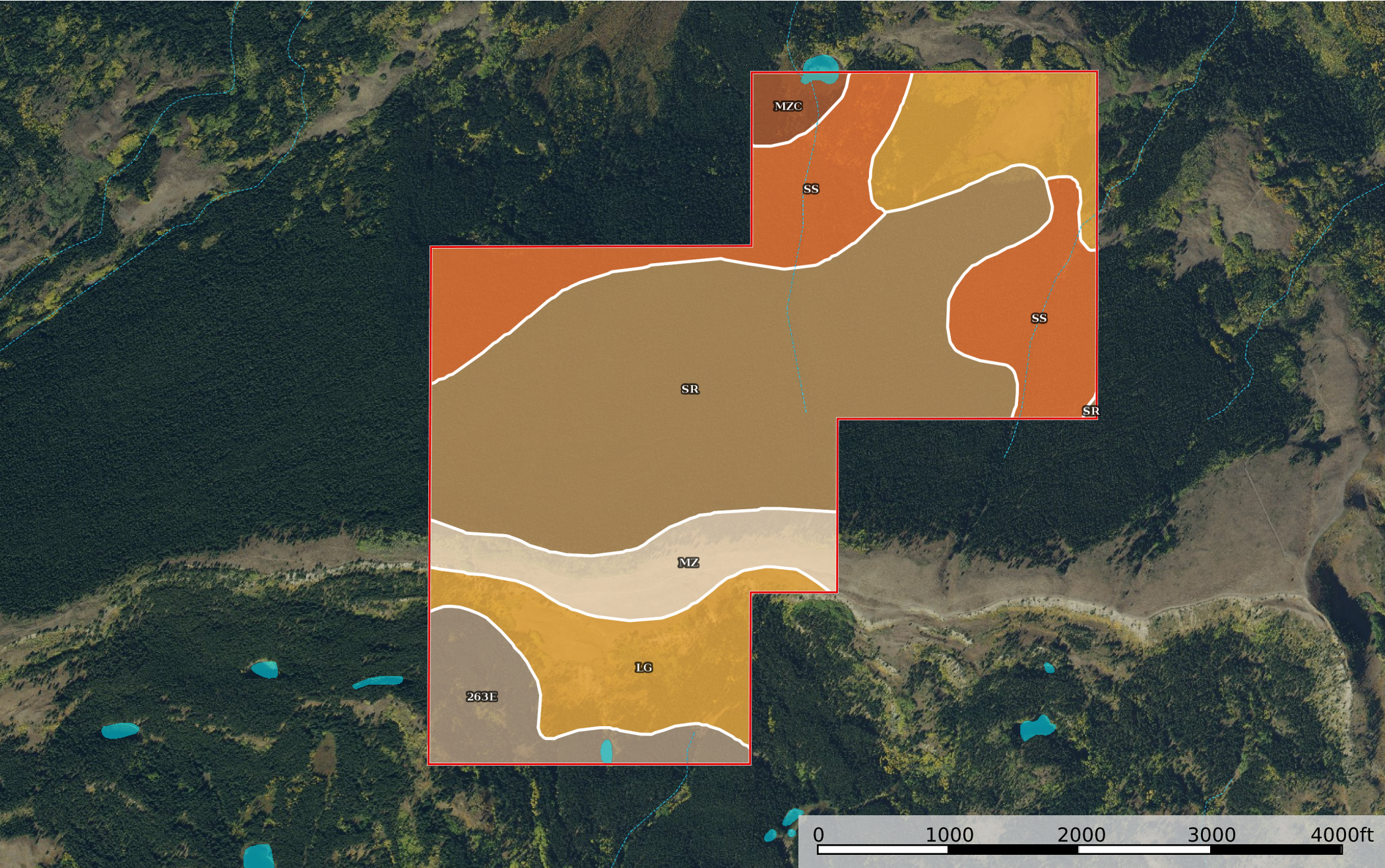


**Wellman-Babb**  
Glacier County, Montana, 402.94 AC +/-



- Boundary
- Stream, Intermittent
- River/Creek
- Water Body



|  400.3 ac









SOIL CODE	SOIL DESCRIPTION	ACRES	%	CAP
Sr	Sherburne gravelly loam, sloping	175.2	43.76	6e
SS	Sherburne gravelly loam, steep	77.4	19.34	6e
Mz	Mord loam, sloping	32.9	8.22	6e
LG	Libeg stony loam, very steep	78.2	19.55	7e
MZc	Mord stony loam, steep	7.3	1.83	6e
263E	Vulture-Worock, stony-lpasha, occasionally flooded complex, 4 to 35 percent slopes	29.3	7.31	6e
TOTALS		400.3	100%	6.2

## Capability Legend

Increased Limitations and Hazards

Decreased Adaptability and Freedom of Choice Users

Land, Capability

								
	1	2	3	4	5	6	7	8
'Wild Life'	•	•	•	•	•	•	•	•
Forestry	•	•	•	•	•	•	•	
Limited	•	•	•	•	•	•	•	
Moderate	•	•	•	•	•	•		
Intense	•	•	•	•	•			
Limited	•	•	•	•				
Moderate	•	•	•					
Intense	•	•						
Very Intense	•							

## Grazing Cultivation

(c) climatic limitations (e) susceptibility to erosion

(s) soil limitations within the rooting zone (w) excess of water