

280.00'  
 300  
 40.73  
 40.92  
 41.47  
 41.05  
 40.63  
 40  
 100  
 159.8  
 80  
 33'  
 80.00  
 5335.44'  
 80.84 CH = 5295.84'  
 60.00 AC  
 9s 39E sec 2  
 NE, NE  
 30ac  
 1870 PR  
 4460 cert  
 NO SUPP  
 36 CH = 5283.96'

# 5-32

SETTLE

9s 39E sec 1  
 NE, NW  
 40ac  
 1870 PR  
 4460 cert  
 1ac  
 1958 PR  
 73610 cert  
 SUPP  
 40ac  
 1958 PR  
 73610 cert  
 1958 PR  
 73610 cert

NW, NW  
 40ac  
 1870 PR  
 4460 cert  
 1.4ac  
 1982 PR  
 73999 cert  
 SUPP  
 40ac  
 1982 PR  
 73999 cert

1800  
 236.89 AC  
 PAR 2  
 SE, NW  
 34ac  
 1970 PR  
 4460 cert  
 6ac  
 1958 PR  
 73610 cert  
 SUPP  
 34ac  
 1958 PR  
 73610 cert

NE, SW  
 40ac  
 1869 PR  
 4220 cert  
 SUPP  
 36ac  
 1958 PR  
 73610 cert

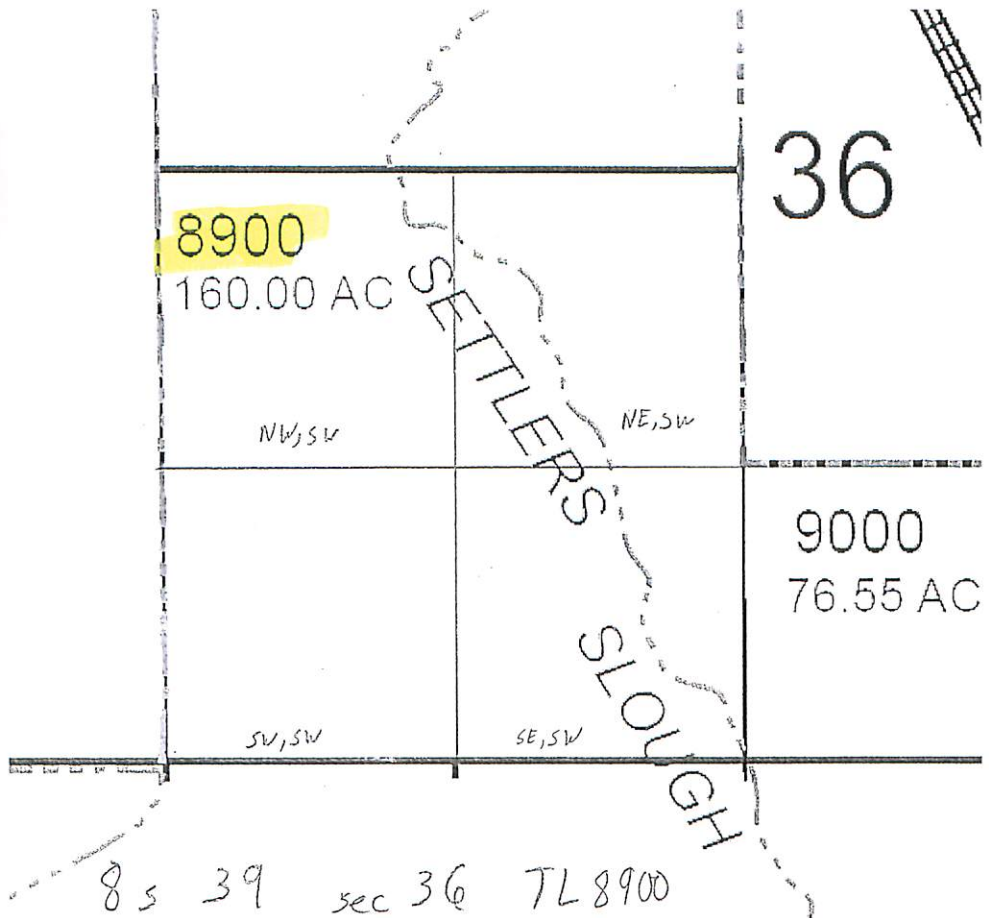
NW, SW  
 40ac  
 1869 PR  
 4220 cert  
 SUPP  
 17ac  
 1958 PR  
 73610 cert

SW, SW  
 20ac  
 1869 PR  
 4220 cert  
 SUPP  
 20ac  
 1869 PR  
 4220 cert

SE, SW  
 20ac  
 1869 PR  
 4220 cert  
 SUPP  
 4ac  
 1958 PR  
 73610 cert

NW, SE  
 40ac  
 1869 PR  
 4220 cert  
 SUPP  
 40ac  
 1958 PR  
 73610 cert

SW, SE  
 22ac  
 1869 PR  
 4220 cert  
 SUPP  
 17.9ac  
 1958 PR  
 73610 cert



8 S 39 sec 36 TL 8900

NE, SW  
40ac  
1870 PR  
4460 cert

NW, SW  
40ac  
1870 PR  
4460 cert

SW, SW  
40ac  
1870 PR  
4460 cert

SE, SW  
40ac  
1870 PR  
4460 cert

Supp  
40ac  
1958 PR  
73610 cert

Supp  
40ac  
1982 PR  
73999 cert

Supp  
40ac  
1982 PR  
73999 cert

Supp  
40ac  
1958 PR  
73610 cert