

12570 FM 530, Hallettsville - - 115.087 Acres  
12570 FM 530  
Hallettsville, TX 77964

**\$2,000,000**  
115.080± Acres  
Lavaca County





**12570 FM 530, Hallettsville - - 115.087 Acres**  
**Hallettsville, TX / Lavaca County**

---

**SUMMARY**

**Address**

12570 FM 530

**City, State Zip**

Hallettsville, TX 77964

**County**

Lavaca County

**Type**

Hunting Land, Recreational Land, Ranches

**Latitude / Longitude**

29.355209 / -96.76614

**Dwelling Square Feet**

2192

**Bedrooms / Bathrooms**

3 / 3.5

**Acreage**

115.080

**Price**

\$2,000,000

**Property Website**

<https://bubelarealestate.com/property/12570-fm-530-hallettsville-115-087-acres-lavaca-texas/96919/>



## **PROPERTY DESCRIPTION**

Experience a Quintessential Texas Ranch Lifestyle at the Magnificent 6W Gerhardt Ranch - A 115-Acre Ranch South of Hallettsville

HALLETTSVILLE, TX - We are proud to present an exceptional opportunity to acquire the 6W Gerhardt Ranch, a stunning 115.0870-acre property located at 12570 FM 530, Hallettsville, TX 77964. This meticulously improved ranch offers upscale country living, diverse recreational and ranching opportunities, plus unparalleled investment potential.

### **Acreage and Topography:**

Spanning 115.0870 acres, the 6W Gerhardt Ranch boasts a captivating and diverse landscape with multiple elevations and rolling terrain, featuring a notable +/- 60 feet of elevation change from the tranquil creek bed. This varied topography creates stunning vistas and offers a dynamic environment for both recreation and livestock.

### **Water Features & Natural Beauty:**

The property is a true oasis, graced by a meandering creek and three well-maintained ponds, providing ample water for wildlife and livestock with no floodplain. Live oaks are scattered throughout, enhancing the scenic beauty and offering natural shade and habitat.

### **The Main Residence - A Fully Remodeled Masterpiece:**

The heart of the 6W Gerhardt Ranch is an exquisite 2,192 sq ft home, completely remodeled in 2023 to high standards. Featuring a durable standing seam metal roof and timeless brick exterior, this residence combines timeless charm with modern sophistication.

- Open Concept Living: The interior showcases an inviting open-concept floor plan, ideal for entertaining and family gatherings. A warm wood-burning fireplace anchors the main living area.
- Gourmet Kitchen: The chef's kitchen is a culinary delight, equipped with elegant Silestone counters, a sleek stainless-steel sink and appliances, and a practical center island with seating for three.
- Dining: A spacious breakfast/dining area flows seamlessly from the kitchen to the living room.
- Luxurious Master Suite: The generous 22' x 14' master suite is a private retreat, featuring a lavish bath with a soaking tub, a large walk-in shower, and a double vanity. A private door provides direct access to the back patio. The master bath also benefits from an instantaneous gas water heater.
- Additional Amenities: The home includes two additional bedrooms and 2.5 bathrooms, a nice-sized utility room with space for an extra refrigerator, a Texas closet for ample storage, and consistent tile flooring throughout for ease of maintenance.

### **Outdoor Living & Entertaining:**

The ranch embraces outdoor living with a welcoming front covered patio and an impressive back patio designed for ultimate relaxation and entertainment. This outdoor oasis features a built-in Coyote Brand grill, sink, refrigerator, and a dedicated TV for game watching - perfect for hosting gatherings or simply enjoying the serene surroundings.

### **Outbuildings & Agricultural Infrastructure:**

Supporting both recreational and agricultural pursuits, the property includes:

- Metal Shop: An expansive 1,800 sq ft (30x50) metal shop, complete with electricity and water, providing ample space for equipment, hobbies, or storage.
- Hay Barn: A dedicated hay barn ensures convenient storage for feed.
- Cattle Facilities: Robust cattle pens with a squeeze chute and a lean-to barn cater to livestock operations, making it an ideal setup for a working ranch.

### **Utilities & Services:**

The ranch is well-appointed with essential utilities:

- Electric: Reliable service from San Bernard Electric.
- Propane: An owned propane tank supplies gas for the home.
- Water: A private well with a water softener ensures a consistent and high-quality water supply.

### **Unrivaled Investment Potential:**

One of the most compelling features of the 6W Gerhardt Ranch is its massive road frontage - over 3,000 feet on CR 152 and more than

1,500 feet on FM 530. This extensive frontage not only provides exceptional access but also offers significant long-term investment potential for future development or subdivision, a key consideration for today's savvy land buyer looking for investment appreciation.

#### Recreation & Lifestyle:

Whether you're an avid hunter or a cattle enthusiast, this property offers excellent opportunities. The cross-fenced pastures are perfect for livestock rotation, while the diverse landscape and water sources attract abundant wildlife, making it a prime location for hunting.

#### Summary of Highlights:

- 115.0870 Acres of picturesque Texas land.
- Fully Remodeled 2,192 sq ft Home with 3 beds, 2.5 baths, open concept, and high-end finishes.
- Extensive Outdoor Living with a gourmet outdoor kitchen.
- Scenic Water Features: Creek and three ponds.
- Mature Live Oaks and rolling topography with significant elevation changes.
- Massive Road Frontage on FM 530 and CR 152, offering incredible long-term investment potential.
- Agricultural Infrastructure: 1,800 sq ft metal shop, hay barn, and cattle pens with squeeze chute.
- Prime Location south of Hallettsville.

The 6W Gerhardt Ranch represents a unique opportunity to own a turnkey luxury ranch that seamlessly blends modern comforts with authentic rural charm, all while holding substantial future value.

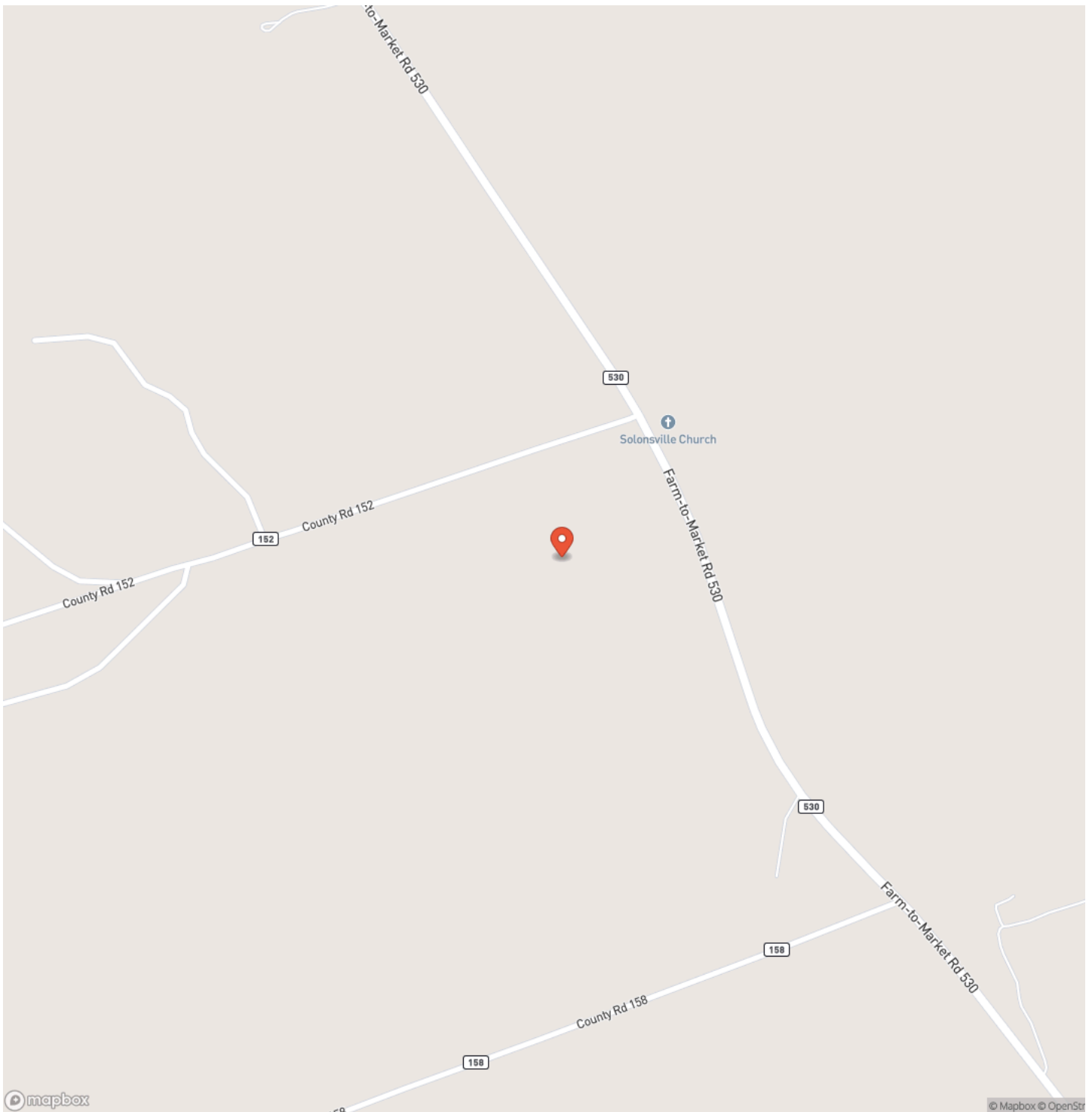


12570 FM 530, Hallettsville - - 115.087 Acres  
Hallettsville, TX / Lavaca County



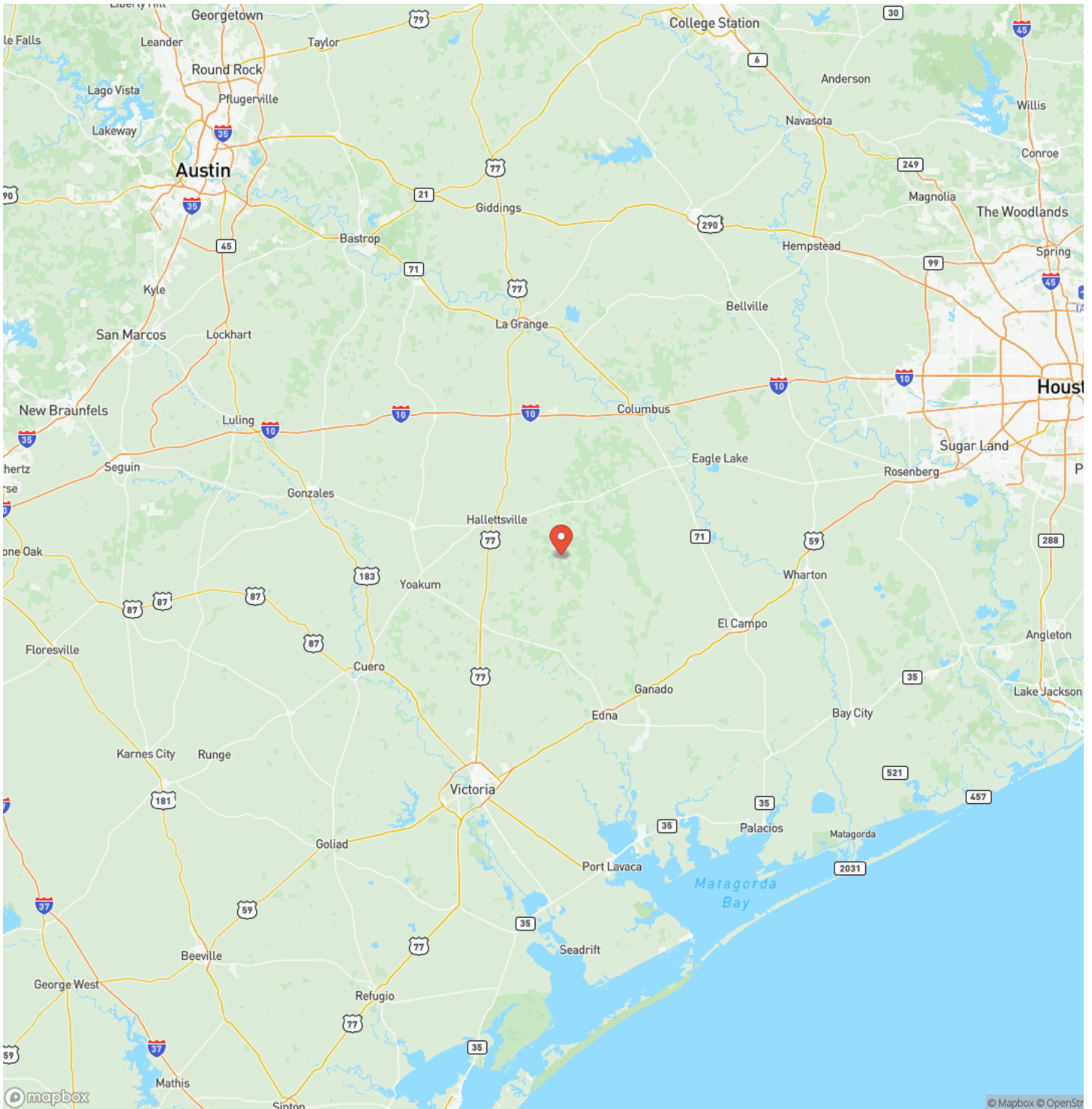
12570 FM 530, Hallettsville - - 115.087 Acres  
Hallettsville, TX / Lavaca County

## Locator Map



## Hallettsville, TX / Lavaca County

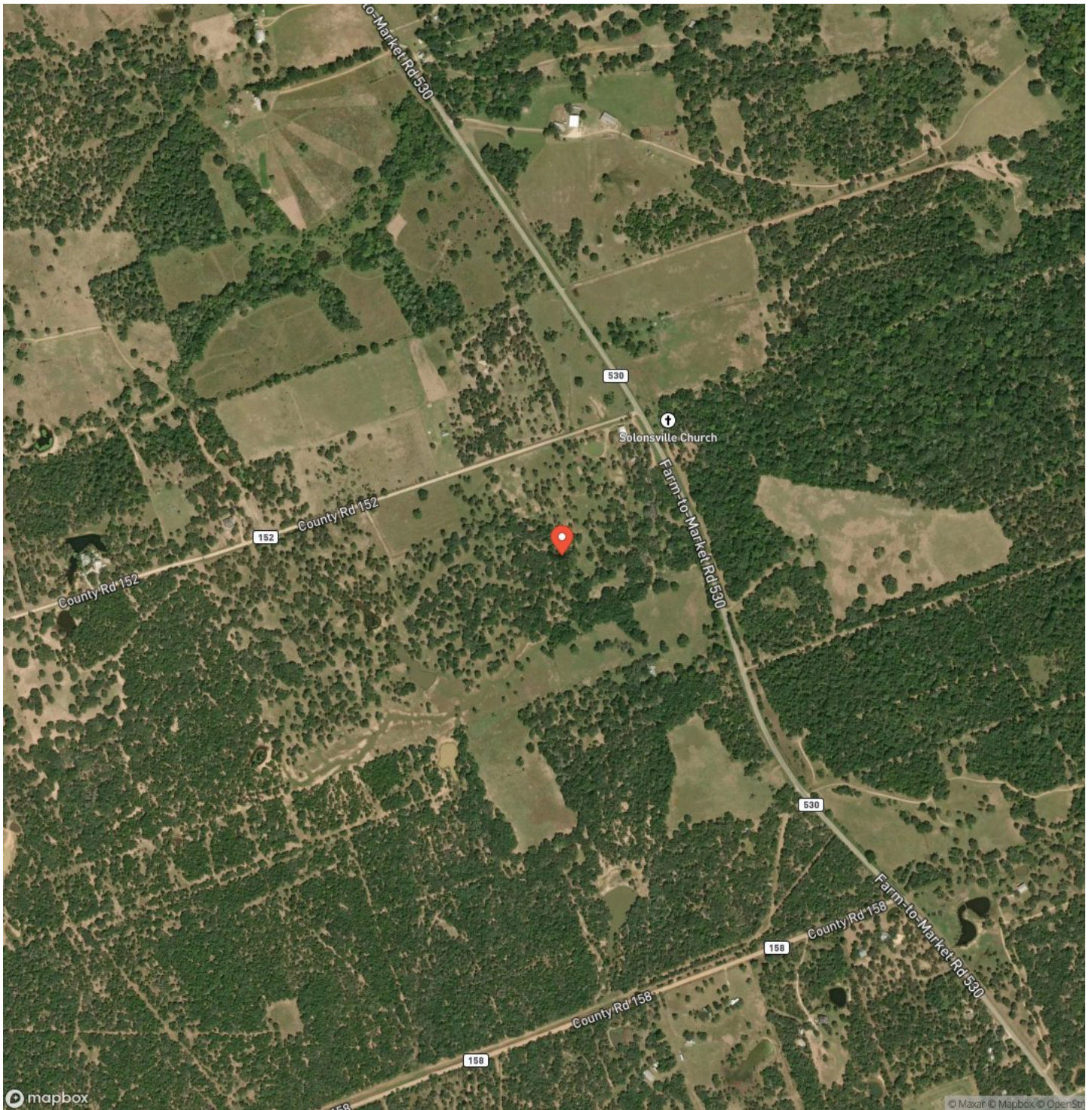
## Locator Map





12570 FM 530, Hallettsville - - 115.087 Acres  
Hallettsville, TX / Lavaca County

## Satellite Map





**12570 FM 530, Hallettsville - - 115.087 Acres**  
**Hallettsville, TX / Lavaca County**

## LISTING REPRESENTATIVE

**For more information contact:**



### Representative

Chip Bubela

## Mobile

(979) 743-4555

## Office

(979) 743-4555

## Email

Chip@BubelaRealEstate.com

## Address

603 N. Main St,

## City / State / Zip

## NOTES

[illegible]

[illegible]



## **DISCLAIMERS**

Information in this brochure is provided solely for information purposes and does not constitute an offer to sell or advertise real estate outside the states in which broker or agent licensed. The information presented has been obtained from sources deemed to be reliable, but is not guaranteed or warranted by the agent, broker, or the sellers of these properties. This offering is subject to errors, omissions, prior sale, price change, correction or withdrawal from the market without notice. All references to age, square footage, income, expenses, acreage, carrying capacity, and land classification, etc. are approximate. Prospective buyers are chargeable with and expected to conduct their own independent investigation of the information and the property and to rely only on those results. Sellers reserve the right to accept or reject any and all offers without liability to any buyer or cooperating broker.

Maps are provided for illustration purposes only, the accuracy is not warranted. Parcels on interactive maps are not adjusted to match aerial backgrounds. This information is for reference purposes only and is not a legal document. Data maps contain errors. The seller and seller's agent are making known to all potential buyers that there may be variations between the location of the existing fence lines and the legal description of the deeded property. Seller and seller's agent make no warranties with regard to the location of the fence lines in relationship to the deeded property lines, nor does the Seller make any warranties or representations with regard to the specific acreage contained within the fenced property lines. Seller is selling the property in an "as is" condition, which includes the location of the fences as they exist. Boundaries shown on the accompanying maps are approximate, based on county parcel data. The maps are not to scale. The accuracy of the maps is not guaranteed. Prospective buyers are encouraged to verify fence lines, deeded property lines and acreages using a licensed surveyor at their own expense.

---

**Bubela Real Estate**  
603 N Main  
Schulenburg, TX 78956  
(979) 743-4555  
[bubelarealestate.com](http://bubelarealestate.com)

---