

1404 Hwy 89S - Linn - Homestead & 60 acres m/l
1404 Highway 89S
Linn, MO 65051

\$629,000
60± Acres
Osage County



**1404 Hwy 89S - Linn - Homestead & 60 acres m/l
Linn, MO / Osage County**

SUMMARY

Address

1404 Highway 89S null

City, State Zip

Linn, MO 65051

County

Osage County

Type

Recreational Land, Horse Property, Residential Property, Farms, Hunting Land

Latitude / Longitude

38.424799 / -91.824217

Dwelling Square Feet

1,474

Bedrooms / Bathrooms

3 / 1

Acreage

60

Price

\$629,000

Property Website

<https://www.mossoakproperties.com/property/1404-hwy-89s-linn-homestead-60-acres-m-l-osage/missouri/105304/>



**1404 Hwy 89S - Linn - Homestead & 60 acres m/l
Linn, MO / Osage County**

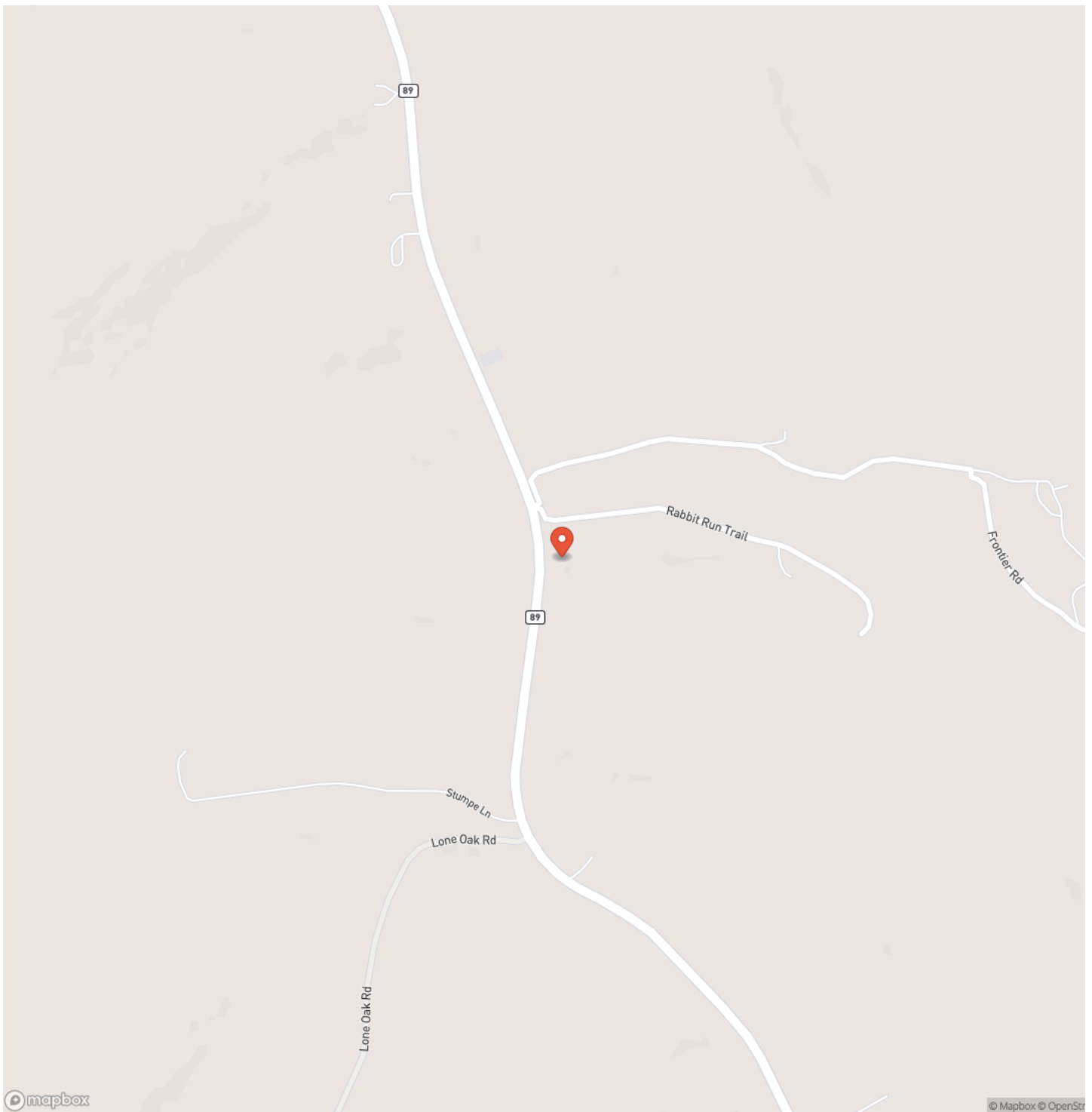
PROPERTY DESCRIPTION

Family homestead with 60 acres only 3 miles from Linn with blacktop & county road frontage. This farm has been in the family multi-generations, now it's time to turn the page for new ownership. The modest farmhouse boasts awesome views & includes a formal living room, family room, 3 bedrooms, 1 bath with main level laundry & 2 car attached garage. Outside includes a 20'x40' barn with a 13' lean-to and a 18' x 12.6' utility shed. Three tenths of a mile of highway frontage & approx 1/4 mile of county road frontage. The acreage is mostly open for hay or grazing. There's a pond & district water running thru the farm for watering livestock or for possible development. Don't miss your opportunity as this could be your next favorite place.

1404 Hwy 89S - Linn - Homestead & 60 acres m/l
Linn, MO / Osage County

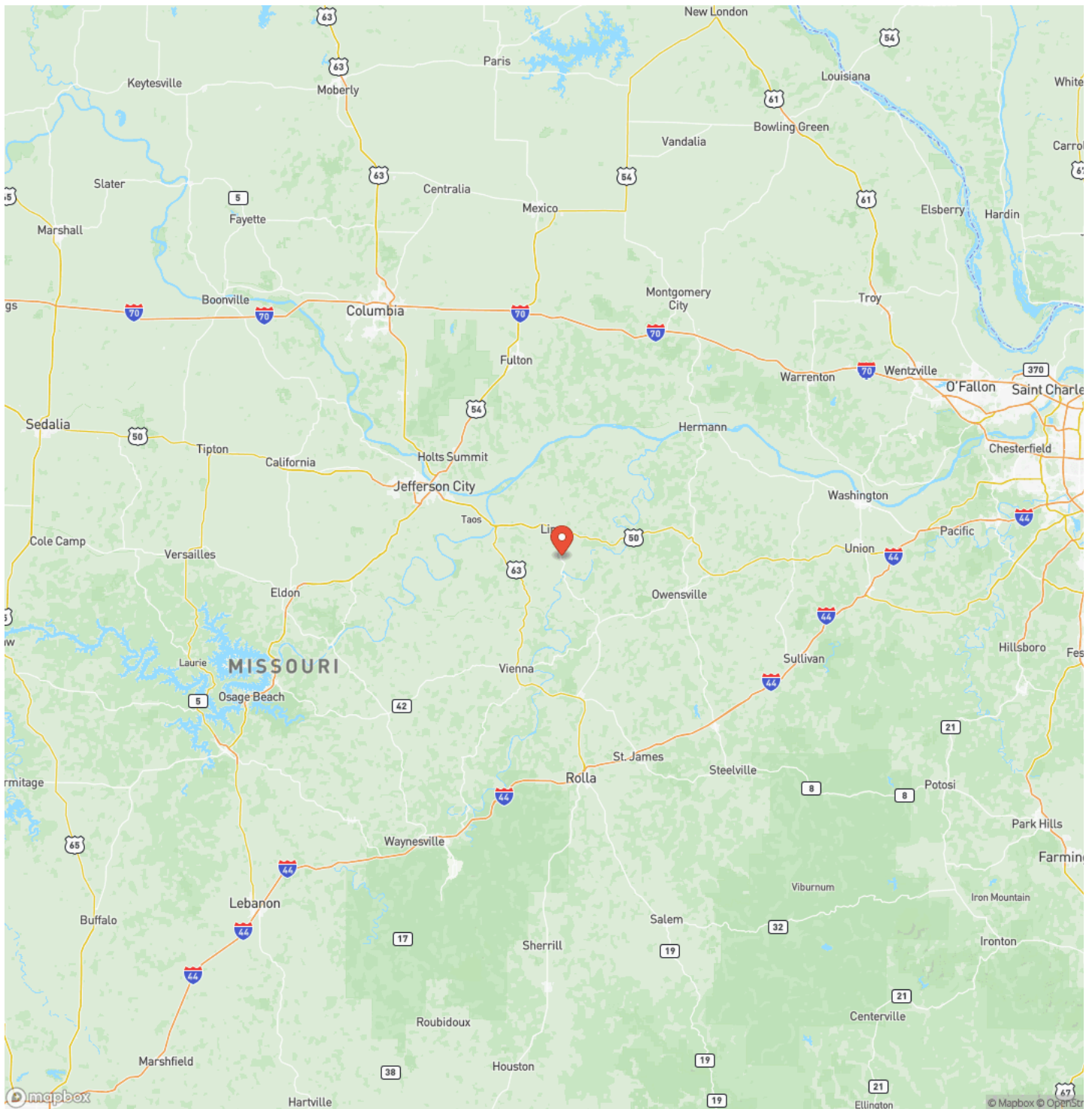


Locator Map

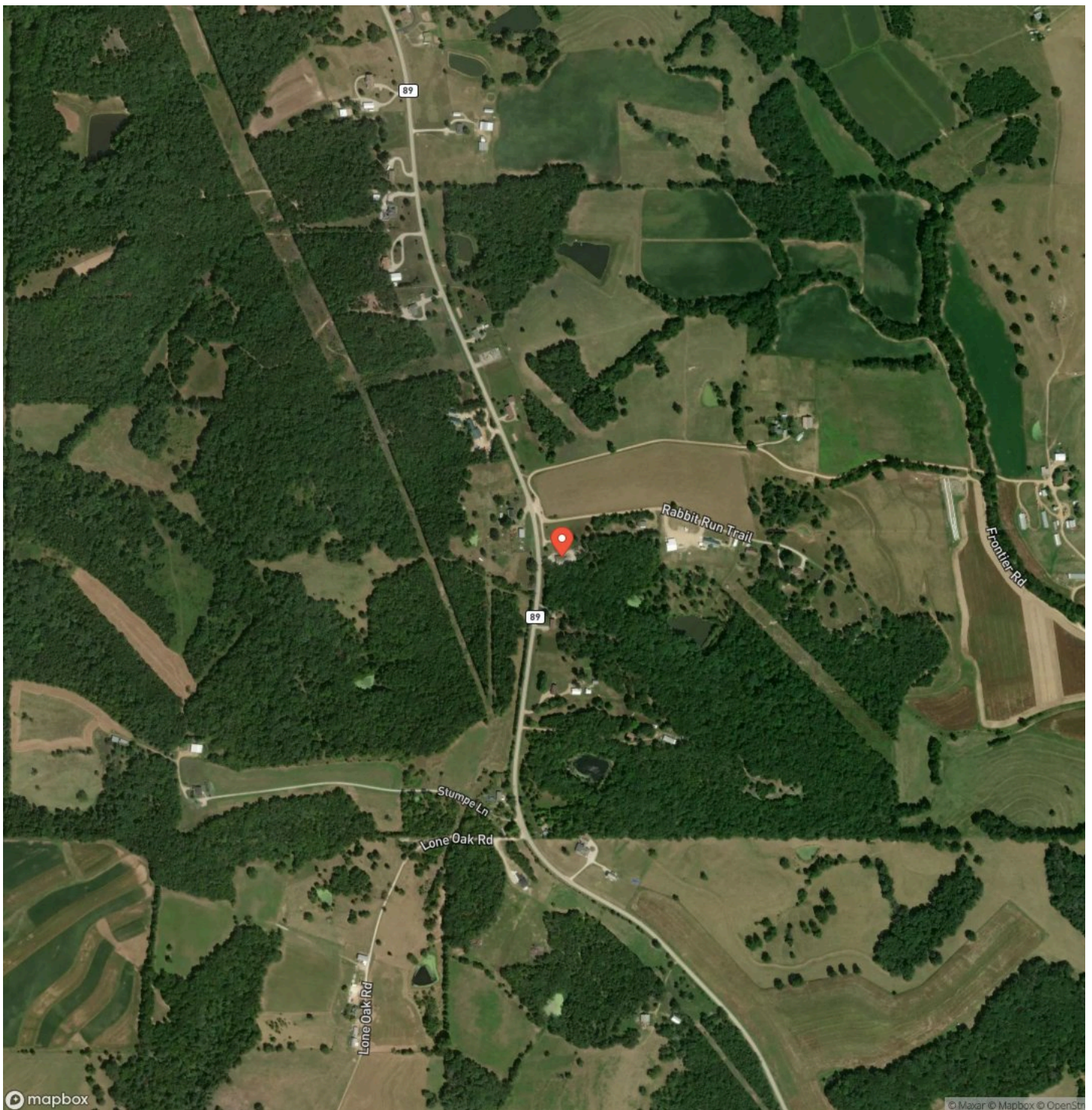


1404 Hwy 89S - Linn - Homestead & 60 acres m/l
Linn, MO / Osage County

Locator Map



Satellite Map



DISCLAIMERS

Information in this brochure is provided solely for information purposes and does not constitute an offer to sell or advertise real estate outside the states in which broker or agent licensed. The information presented has been obtained from sources deemed to be reliable, but is not guaranteed or warranted by the agent, broker, or the sellers of these properties. This offering is subject to errors, omissions, prior sale, price change, correction or withdrawal from the market without notice. All references to age, square footage, income, expenses, acreage, carrying capacity, and land classification, etc. are approximate. Prospective buyers are chargeable with and expected to conduct their own independent investigation of the information and the property and to rely only on those results. Sellers reserve the right to accept or reject any and all offers without liability to any buyer or cooperating broker.

Maps are provided for illustration purposes only, the accuracy is not warranted. Parcels on interactive maps are not adjusted to match aerial backgrounds. This information is for reference purposes only and is not a legal document. Data maps contain errors. The seller and seller's agent are making known to all potential buyers that there may be variations between the location of the existing fence lines and the legal description of the deeded property. Seller and seller's agent make no warranties with regard to the location of the fence lines in relationship to the deeded property lines, nor does the Seller make any warranties or representations with regard to the specific acreage contained within the fenced property lines. Seller is selling the property in an "as is" condition, which includes the location of the fences as they exist. Boundaries shown on the accompanying maps are approximate, based on county parcel data. The maps are not to scale. The accuracy of the maps is not guaranteed. Prospective buyers are encouraged to verify fence lines, deeded property lines and acreages using a licensed surveyor at their own expense.

Mossy Oak Properties Central Missouri Land, Homes, and Auctions
1803 Sun Valley Drive Suite B
Jefferson City, MO 65109
(573) 635-3544
<https://www.mossoakproperties.com/>
