

Mid-Century Modern Masterpiece
405 E 3rd Street
Oakley, KS 67748

\$489,000
0.370± Acres
Logan County



Mid-Century Modern Masterpiece Oakley, KS / Logan County

SUMMARY

Address

405 E 3rd Street

City, State Zip

Oakley, KS 67748

County

Logan County

Type

Single Family, Residential Property

Latitude / Longitude

39.127298 / -100.849949

Dwelling Square Feet

3053

Bedrooms / Bathrooms

3 / 2

Acreage

0.370

Price

\$489,000

Property Website

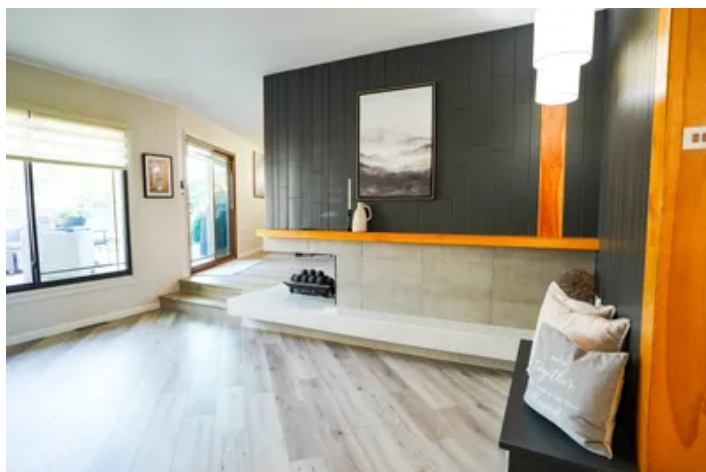
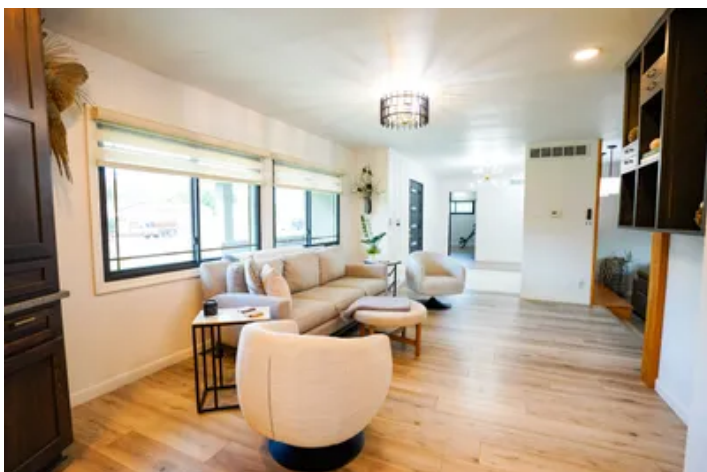
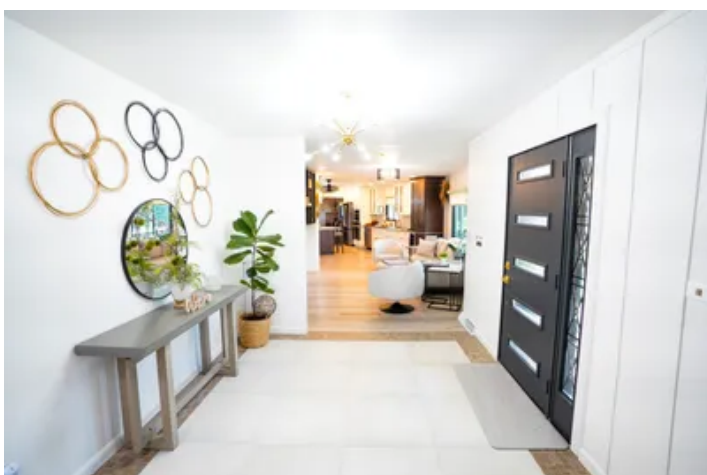
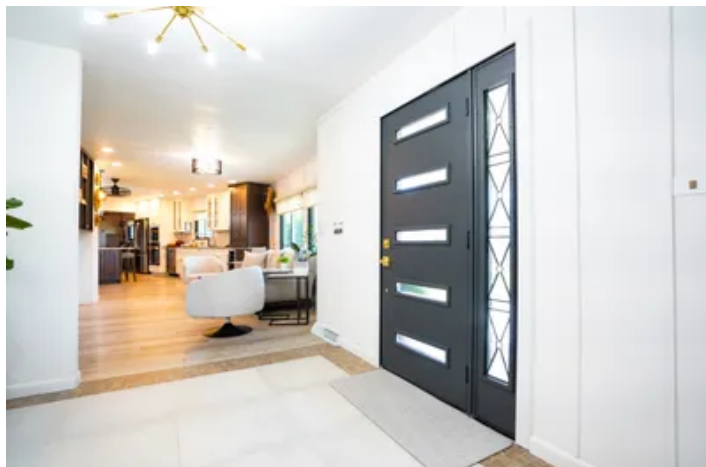
<https://arrowheadlandcompany.com/property/mid-century-modern-masterpiece-logan-kansas/81624/>



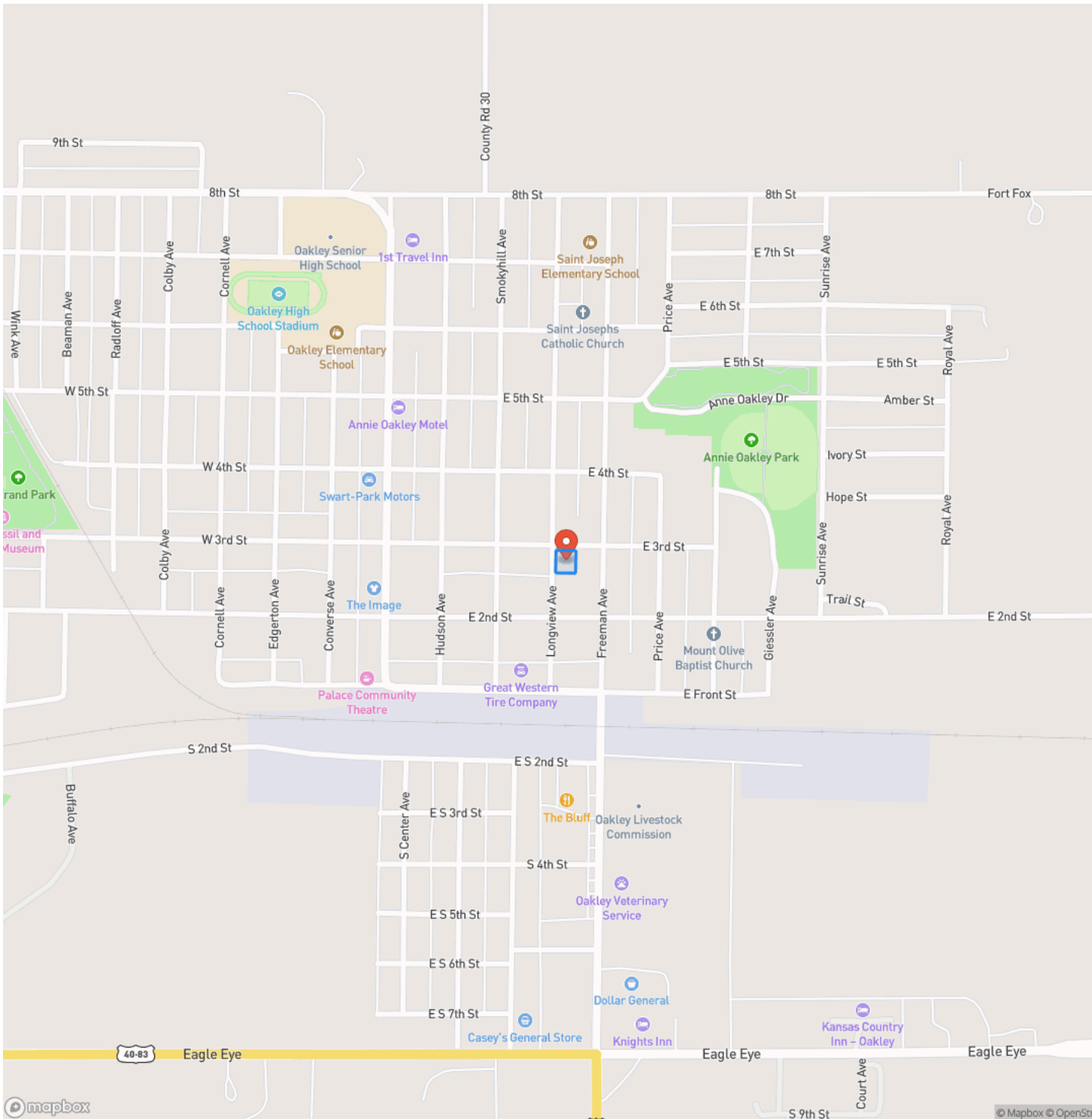
PROPERTY DESCRIPTION

PRICE REDUCED!!! Seller is offering a \$21,000 new roof allowance to the buyer to be paid at closing! This exquisitely remodeled 3,053 ± square foot residence, originally built in 1958, has been completely transformed into a modern masterpiece—blending timeless mid-century charm with contemporary sophistication. Featuring 3 spacious bedrooms, 2 luxurious bathrooms, and an attached 2-car garage with built-in storage closets, the home is designed around an open-concept layout with clean, minimal lines and abundant natural light. Upon entry, guests are greeted by oversized black-framed windows and more than 42 matte black and gold lighting fixtures that infuse the home with light and elegance. The interior boasts TuffCore LVT flooring throughout, a calming Sherwin-Williams color palette (Snowbound, Iron Ore, Drift of Mist, and Natural Linen), and matte black and gold hardware on every cabinet and door—all working in harmony to create a sense of peace and refined luxury. The heart of the home is the designer kitchen, highlighted by an 8'3" Southport Quartz island with a "Stone" stained base, surrounded by Linen Shaker cabinets with waterfall glass fronts and deep drawer lowers. A custom Iron Ore floating coffee bar with a dark walnut countertop adds functionality and flair. Premium appliances include an Italian ZLINE Autograph Series convection wall oven and microwave with gold handles, a 6-burner gas cooktop, custom black Hoodly vent hood, stainless steel dishwasher with a third drawer, built-in Kalamera 18-bottle wine fridge, side-by-side refrigerator with Keurig coffee/water/ice dispenser, and a 33-inch Kohler black quartz single-bowl sink with an antique champagne bronze faucet. Clever storage features abound, including soft-close appliance cabinets, dual pull-out spice racks, double-stack utensil drawers, divider drawers, and more. The family room offers sweeping views of the lush backyard through a fully remodeled three-sided fireplace with a Grigio stone façade, Iron Ore paneling, and a bold geometric tile backdrop. This stunning focal point is visible from the kitchen, dining, and front entry areas. The dining space—ideal for entertaining or quiet evenings—opens to a professionally designed backyard retreat via large sliding glass doors. The tranquil outdoor area features a remastered back patio, columnar evergreens, integrated outdoor lighting, and a mid-century modern concrete geometric privacy fence. The primary suite is a true retreat, complete with His & Hers custom closets and a spa-like en-suite bath. This luxurious bathroom features a Woodbridge soaker tub with Bianco tile surround and oversized niche, a curbless Grigio-tiled walk-in shower with dual matte black showerheads, a floating dual vanity with Delta Champagne Bronze faucets, gold vanity mirrors, Alva black and gold lighting, and a Woodbridge bidet toilet. Additional highlights include a large linen closet, Bianco tiled floors, and an overall ambiance of serene sophistication. The home's striking exterior includes a new custom 5-lite modern front door with black iron geometric sidelight, new dark gray front porch pavers, fresh exterior paint in Urbane Bronze with Alabaster trim, and carefully curated landscaping. Functional enhancements include a remodeled butler's pantry that integrates a laundry room with front-load washer and dryer, a mud sink, and a mud bench. With every detail thoughtfully curated, this home offers a seamless blend of form, function, and style—perfect for those who value modern living and elegant design. All showings are by appointment only. If you would like more information or to schedule a private viewing, please contact Travis Glassman at [\(785\) 672-7134](tel:7856727134).

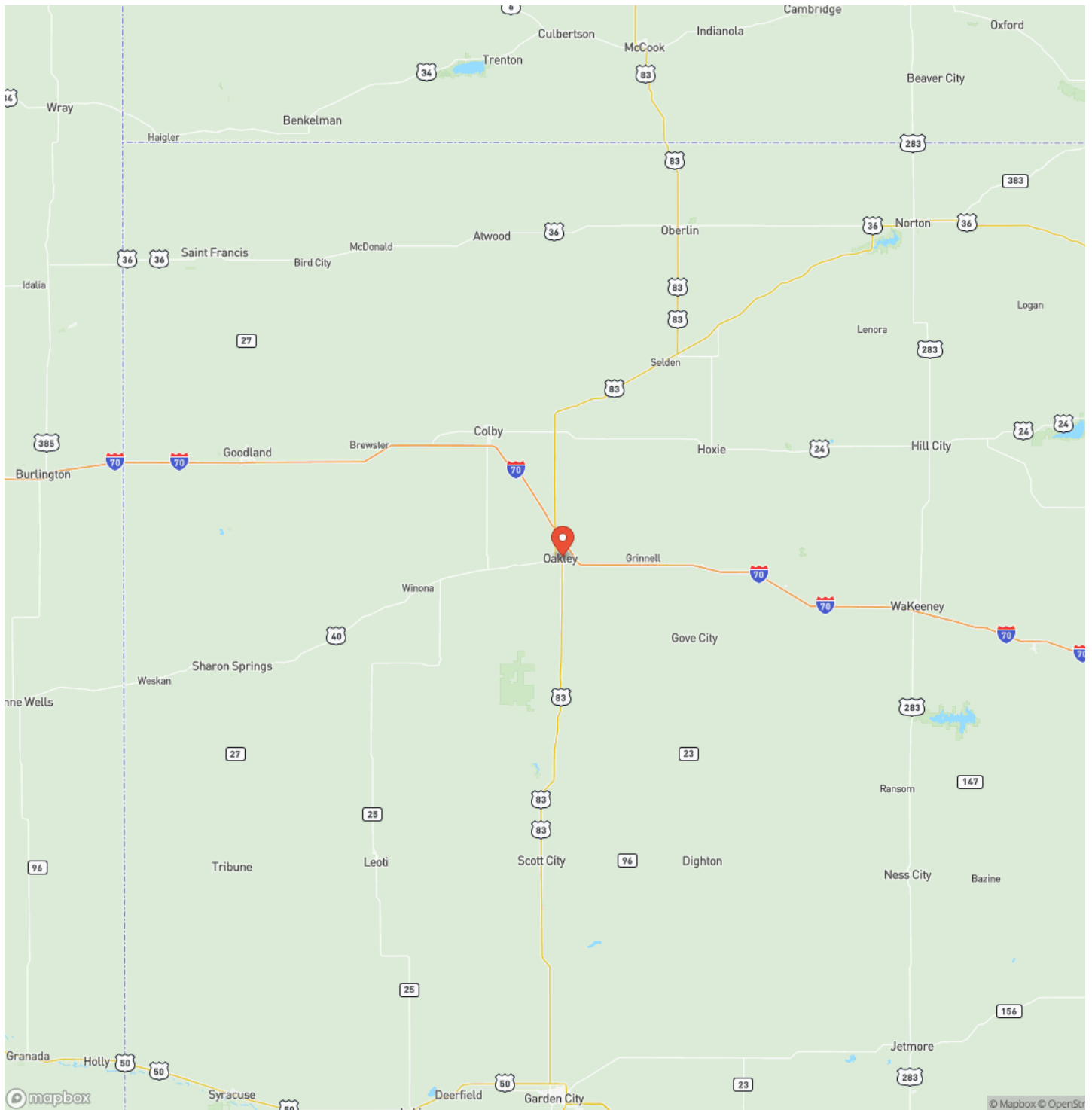
Mid-Century Modern Masterpiece
Oakley, KS / Logan County



Locator Map



Locator Map



Satellite Map



Mid-Century Modern Masterpiece Oakley, KS / Logan County

LISTING REPRESENTATIVE

For more information contact:



Representative

Travis Glassman

Mobile

(785) 672-7134

Email

travis.glassman@arrowheadlandcompany.com

Address

City / State / Zip

NOTES

This image shows a blank sheet of white paper with horizontal ruling lines. The lines are evenly spaced and extend across the width of the page. There are no margins, text, or other markings on the paper.

[illegible]

www.arrowheadlandcompany.com

DISCLAIMERS

Information in this brochure is provided solely for information purposes and does not constitute an offer to sell or advertise real estate outside the states in which broker or agent licensed. The information presented has been obtained from sources deemed to be reliable, but is not guaranteed or warranted by the agent, broker, or the sellers of these properties. This offering is subject to errors, omissions, prior sale, price change, correction or withdrawal from the market without notice. All references to age, square footage, income, expenses, acreage, carrying capacity, and land classification, etc. are approximate. Prospective buyers are chargeable with and expected to conduct their own independent investigation of the information and the property and to rely only on those results. Sellers reserve the right to accept or reject any and all offers without liability to any buyer or cooperating broker.

Maps are provided for illustration purposes only, the accuracy is not warranted. Parcels on interactive maps are not adjusted to match aerial backgrounds. This information is for reference purposes only and is not a legal document. Data maps contain errors. The seller and seller's agent are making known to all potential buyers that there may be variations between the location of the existing fence lines and the legal description of the deeded property. Seller and seller's agent make no warranties with regard to the location of the fence lines in relationship to the deeded property lines, nor does the Seller make any warranties or representations with regard to the specific acreage contained within the fenced property lines. Seller is selling the property in an "as is" condition, which includes the location of the fences as they exist. Boundaries shown on the accompanying maps are approximate, based on county parcel data. The maps are not to scale. The accuracy of the maps is not guaranteed. Prospective buyers are encouraged to verify fence lines, deeded property lines and acreages using a licensed surveyor at their own expense.

Arrowhead Land Company
205 E Dewey Ave
Sapulpa, OK 74066
(833) 873-2452
www.arrowheadlandcompany.com

