

Luxury Countryside Oasis
30410 Oak Meadows Rd
California, MO 65018

\$649,900
3.860± Acres
Moniteau County



**Luxury Countryside Oasis
California, MO / Moniteau County**

SUMMARY

Address

30410 Oak Meadows Rd

City, State Zip

California, MO 65018

County

Moniteau County

Type

Residential Property, Single Family

Latitude / Longitude

38.624418 / -92.478743

Taxes (Annually)

2292

Dwelling Square Feet

4000

Bedrooms / Bathrooms

5 / 4

Acreage

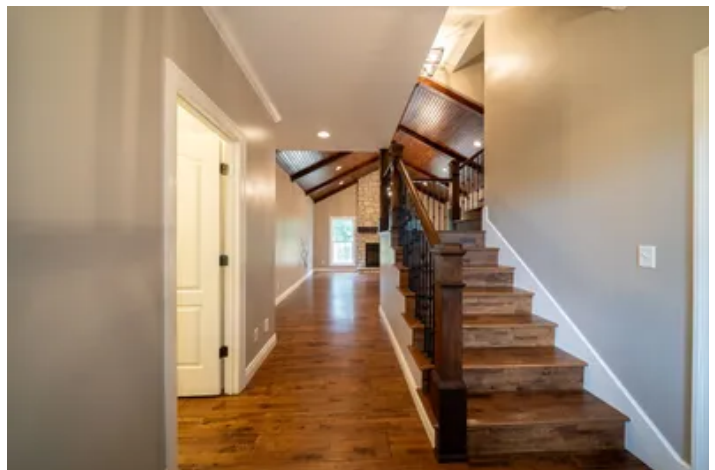
3.860

Price

\$649,900

Property Website

<https://www.mossoakproperties.com/property/luxury-countryside-oasis-moniteau-missouri/105715/>



MORE INFO ONLINE:

<https://www.mossoakproperties.com/>

Luxury Countryside Oasis California, MO / Moniteau County

PROPERTY DESCRIPTION

Welcome to 30410 Oak Meadows Road. Nestled into the Missouri countryside between California and Jefferson City this home will not disappoint. If you have been looking for a luxury getaway close to all those amenities - this is it. With 5 beds, 4 FULL baths and 4000 sq. feet of living space this is a showstopper. As you approach the home you will find that it sets off the road with mature trees in the yard on a 4 +/- acre lot. A stamped sidewalk, covered front porch and thoughtful landscaping gives you that curb appeal you have always wanted. As you step inside to the grand entry way, the shining wood floors and tongue and groove ceiling is sure to welcome your guests right in. A large floor to ceiling fireplace ties the room together. You'll notice a huge open concept floor plan that allows for seamless flow from living room into the gourmet kitchen that has beautiful custom cabinetry, stainless appliances and granite countertops. You will love the view to your backyard wooded oasis and massive covered back deck that allows good flow for grilling out and outdoor entertainment. The main level includes a 2 car garage, laundry, pantry, and a guest bedroom that could double as your home office or craft room. Additionally there is a full bath for your guests. As you make your way to the primary suite it is sure to impress. A large bedroom with both an accent wall and private back deck access, huge en suite bathroom with tile shower, stand alone soaker tub, double vanities, heated tile floors and large walk in closet it will have you wanting to stay all day. The upstairs is perfect for those large families with 2 more bedrooms and a huge play room. Additionally there is a full bathroom and extra hvac system to keep things comfortable for everyone. Don't forget about downstairs where your fully finished basement awaits. Outfitted with a full wet bar, microwave, and space for a full size fridge this would be the perfect spot to continue the entertaining. Another gas fireplace to keep the space cozy and warm would be the perfect spot for your seating area and flat screen for the big game. Continuing through the basement you will find a large bedroom, another fully renovated bathroom and its own lower laundry . The basement also has a large drop zone or man cave room that connects the outdoors to the lower huge workshop garage. Don't worry this home is turn key with the major systems being updated. The home had geothermal hvac installed in 2022, a NEW roof in 2025 and a brand new deck in 2026. The lot also provides ample room to play, enjoy the outdoors, garden among other things. If you are an outdoorsmen you will find a great tree stand and food plot location perfectly situated out of sight of the home and between multiple fields - those cruising bucks are sure to stop on by. The homeowners site plenty of wildlife sightings from the home. Do not miss out on this one! Schedule your showing today!

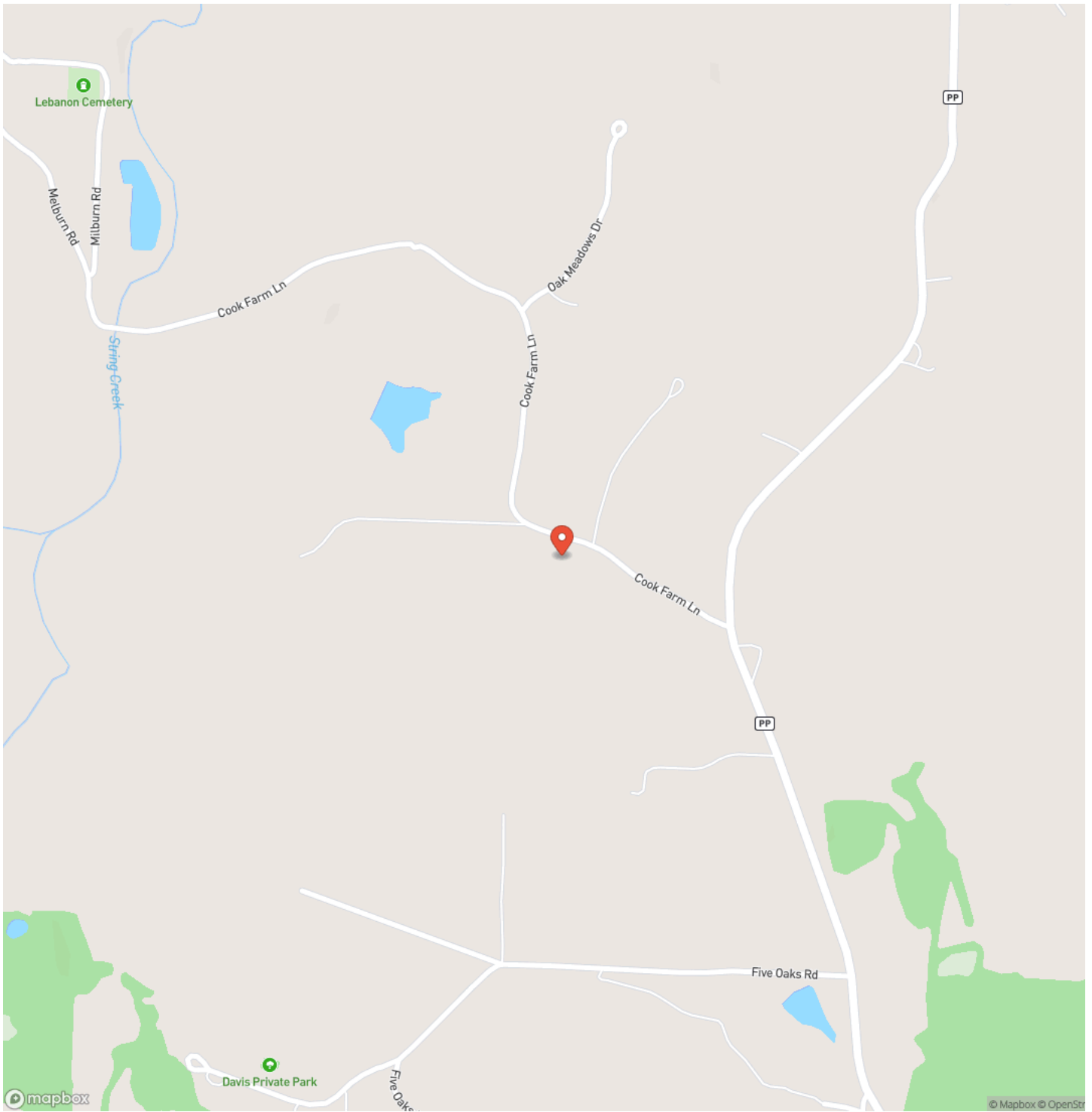
MORE INFO ONLINE:

<https://www.mossoakproperties.com/>

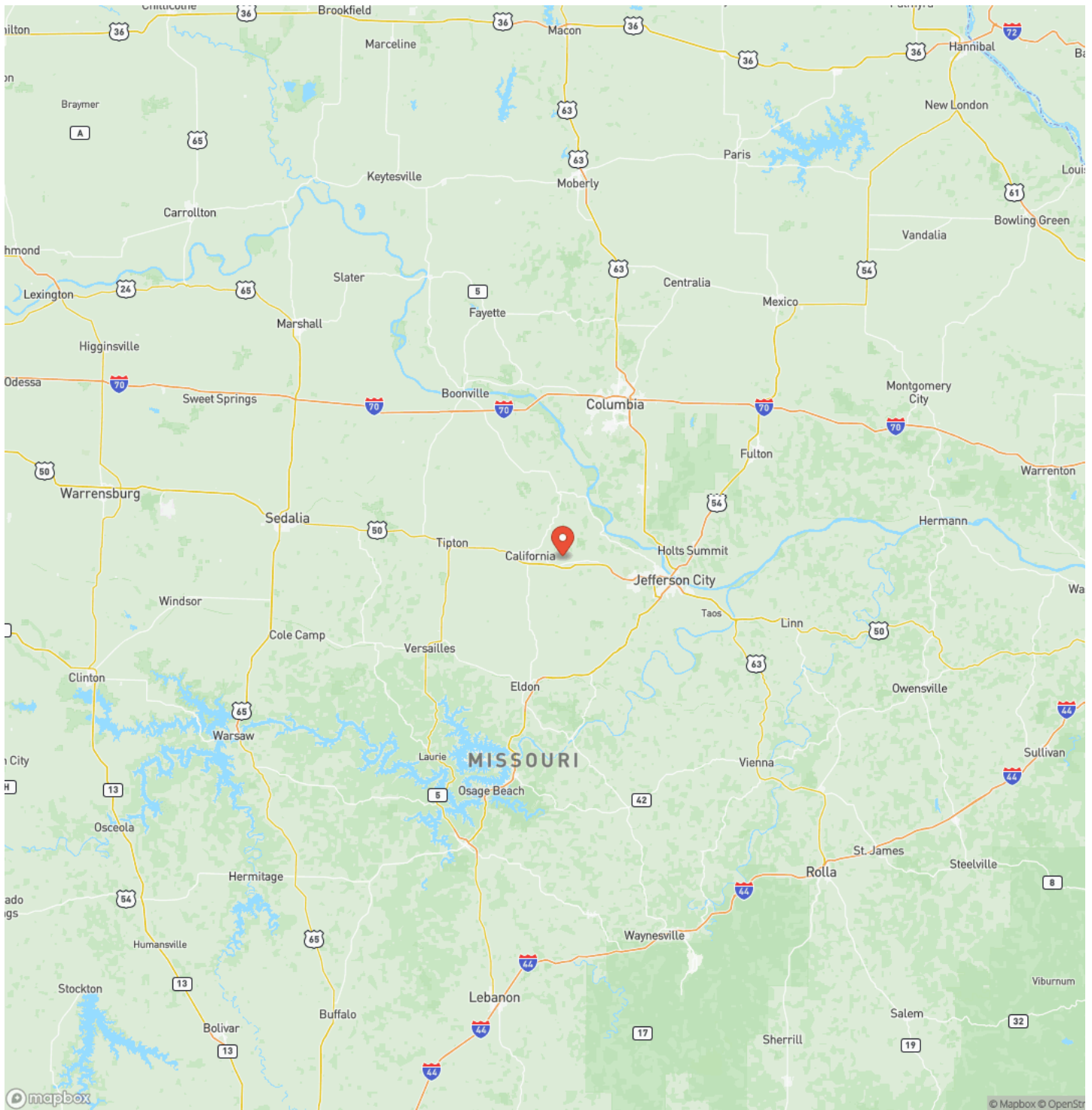
**Luxury Countryside Oasis
California, MO / Moniteau County**



Locator Map



Locator Map



Satellite Map



DISCLAIMERS

Information in this brochure is provided solely for information purposes and does not constitute an offer to sell or advertise real estate outside the states in which broker or agent licensed. The information presented has been obtained from sources deemed to be reliable, but is not guaranteed or warranted by the agent, broker, or the sellers of these properties. This offering is subject to errors, omissions, prior sale, price change, correction or withdrawal from the market without notice. All references to age, square footage, income, expenses, acreage, carrying capacity, and land classification, etc. are approximate. Prospective buyers are chargeable with and expected to conduct their own independent investigation of the information and the property and to rely only on those results. Sellers reserve the right to accept or reject any and all offers without liability to any buyer or cooperating broker.

Maps are provided for illustration purposes only, the accuracy is not warranted. Parcels on interactive maps are not adjusted to match aerial backgrounds. This information is for reference purposes only and is not a legal document. Data maps contain errors. The seller and seller's agent are making known to all potential buyers that there may be variations between the location of the existing fence lines and the legal description of the deeded property. Seller and seller's agent make no warranties with regard to the location of the fence lines in relationship to the deeded property lines, nor does the Seller make any warranties or representations with regard to the specific acreage contained within the fenced property lines. Seller is selling the property in an "as is" condition, which includes the location of the fences as they exist. Boundaries shown on the accompanying maps are approximate, based on county parcel data. The maps are not to scale. The accuracy of the maps is not guaranteed. Prospective buyers are encouraged to verify fence lines, deeded property lines and acreages using a licensed surveyor at their own expense.

Mossy Oak Properties Central Missouri Land, Homes, and Auctions
1803 Sun Valley Drive Suite B
Jefferson City, MO 65109
(573) 635-3544
<https://www.mossoakproperties.com/>
