



5600 Temple Hall Hwy
Granbury, TX 76049

Half Moon Ranch | Hood County

Offered at
\$2,842,750



Half Moon Ranch

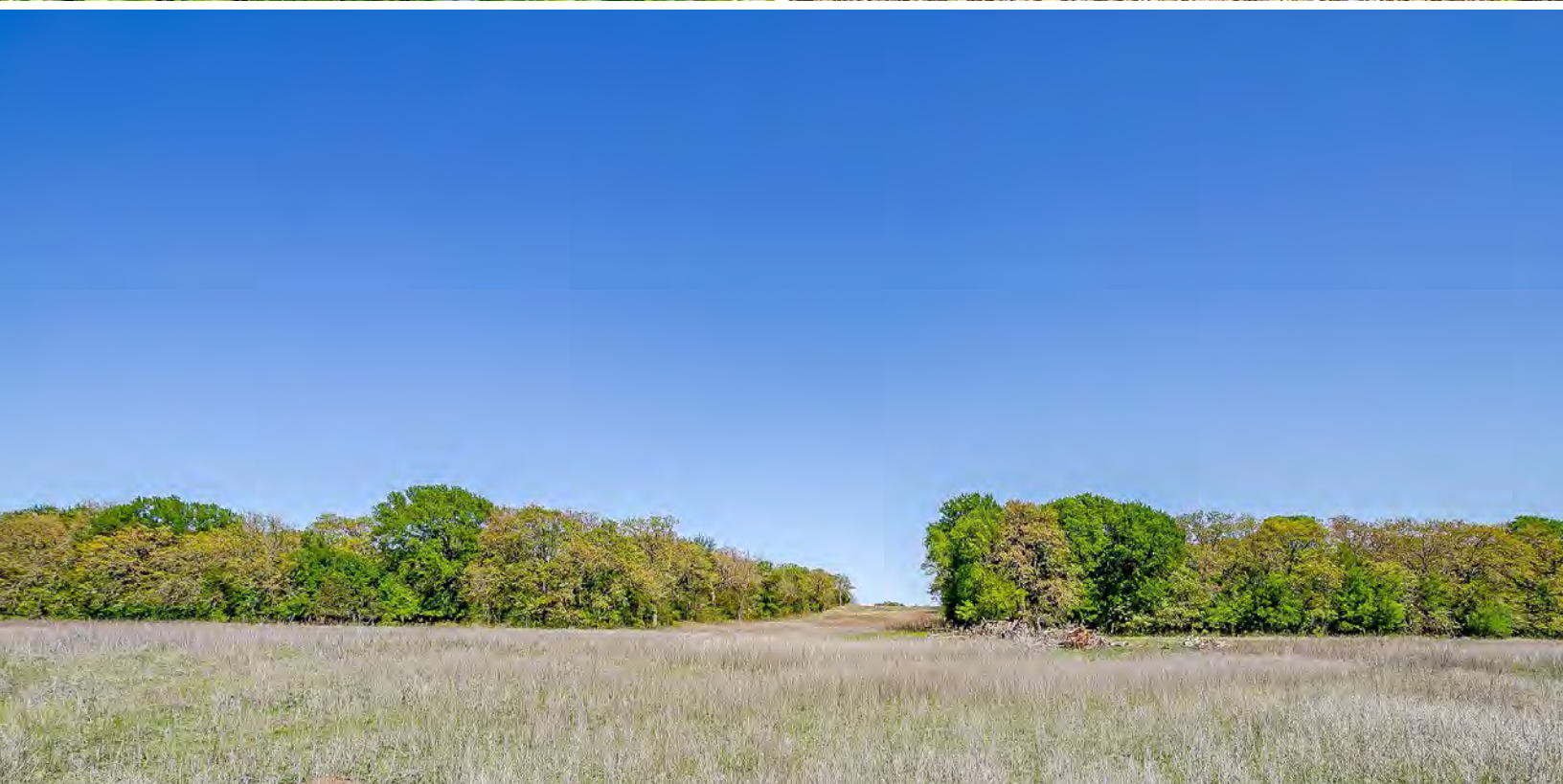
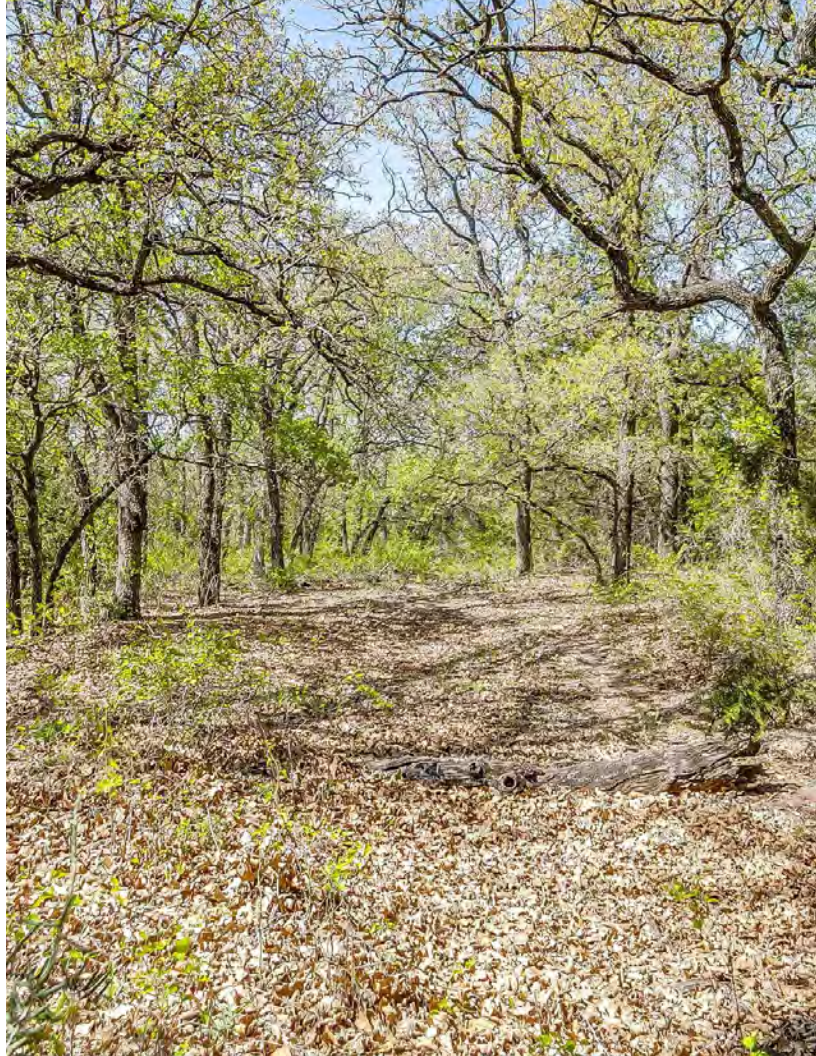
est. 1853

For the first time on the market since 1853, this 91-acre legacy ranch in Hood County offers prime investment potential just 15 miles from Weatherford and 30 miles from Fort Worth. With rolling terrain, a mix of open pasture and dense hardwoods, and Long Creek touching the northwest corner, it's ideal for cattle, horses, or future development. The property features rich habitat for wildlife and excellent topography for building. A historic pioneer home still stands, adding character and history, though not currently livable. Rare opportunity to own a piece of Texas land with strong long-term upside.

This offering contains two tracts 89+/- and 3.5+/- acres. Both tracts are available individually or together. Contact Allen Crumley for more details.

Offered at
\$2,842,750





5600 Temple Hall Hwy
Granbury, TX 76049

landsanddwellings.com

WilliamStrew[☆]



Allen Crumley

Associated Broker

(817)480-9502

allen@williamstrew.com

landsanddwellings.com

Information provided is not guaranteed

