

**60 Acres +/- with a Waterfall, Creek, 2
Cabins, and Great Hunting!!**
420 Thomas Rd
Leslie, AR 72645

\$250,000
60± Acres
Searcy County



60 Acres +/- with a Waterfall, Creek, 2 Cabins, and Great Hunting!!
Leslie, AR / Searcy County

SUMMARY

Address

420 Thomas Rd

City, State Zip

Leslie, AR 72645

County

Searcy County

Type

Residential Property, Recreational Land, Hunting Land, Timberland

Latitude / Longitude

35.747444 / -92.661848

Dwelling Square Feet

576

Bedrooms / Bathrooms

1 / 1

Acreage

60

Price

\$250,000

Property Website

<https://arkansaslandforsale.com/property/60-acres-with-a-waterfall-creek-2-cabins-and-great-hunting-searcy-arkansas/34175/>



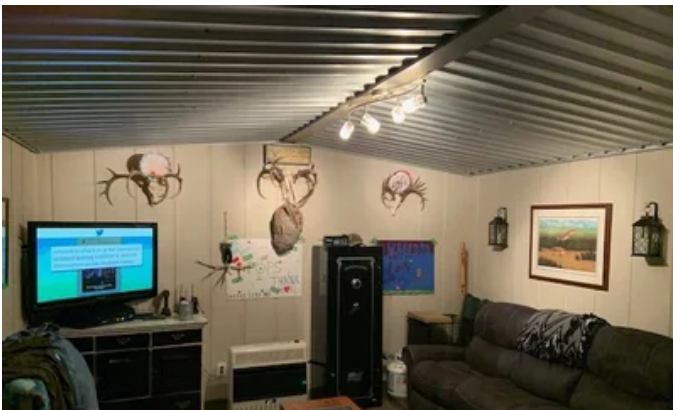
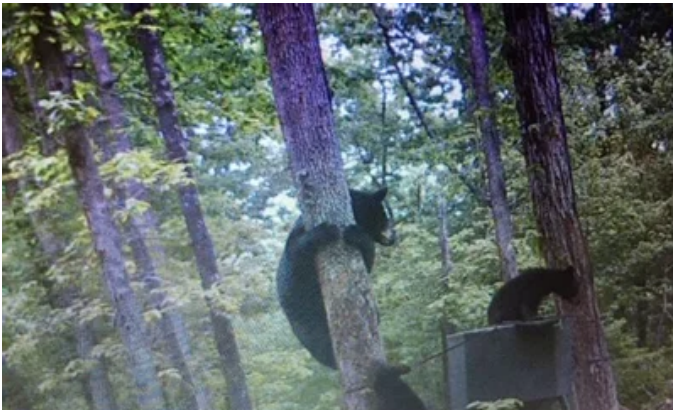
60 Acres +/- with a Waterfall, Creek, 2 Cabins, and Great Hunting!!
Leslie, AR / Searcy County

PROPERTY DESCRIPTION

60 Acres +/- with 2 cabins, a creek, waterfall, swimming hole, pond, 2 storage containers, bluff overhang, huge rocks, and lots of wildlife. The 2 cabins on the property have city water, electric, septic, and fiber internet is available. There are roads throughout with hunting stands in place ready to hunt. The wildlife consist of whitetail deer, turkey, bear, and numerous small game animals. Call Today!! Mossy Oak Properties Delta Land Management [870-447-2135](tel:870-447-2135) or Exclusive Listing Agent Craig Loggins [870-448-6218](tel:870-448-6218)



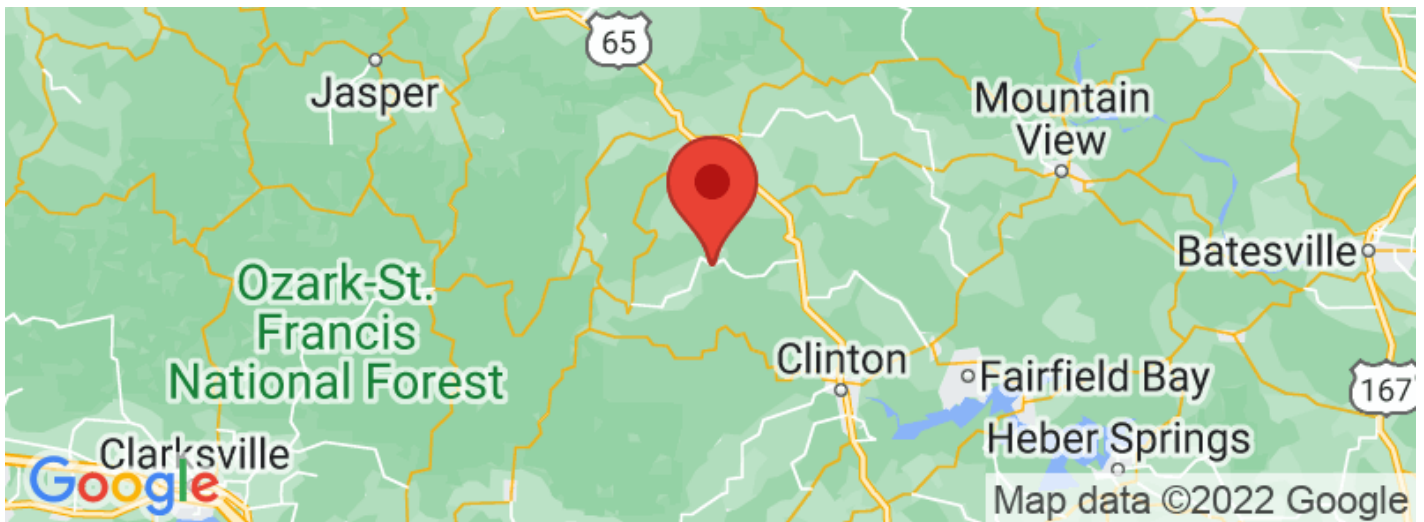
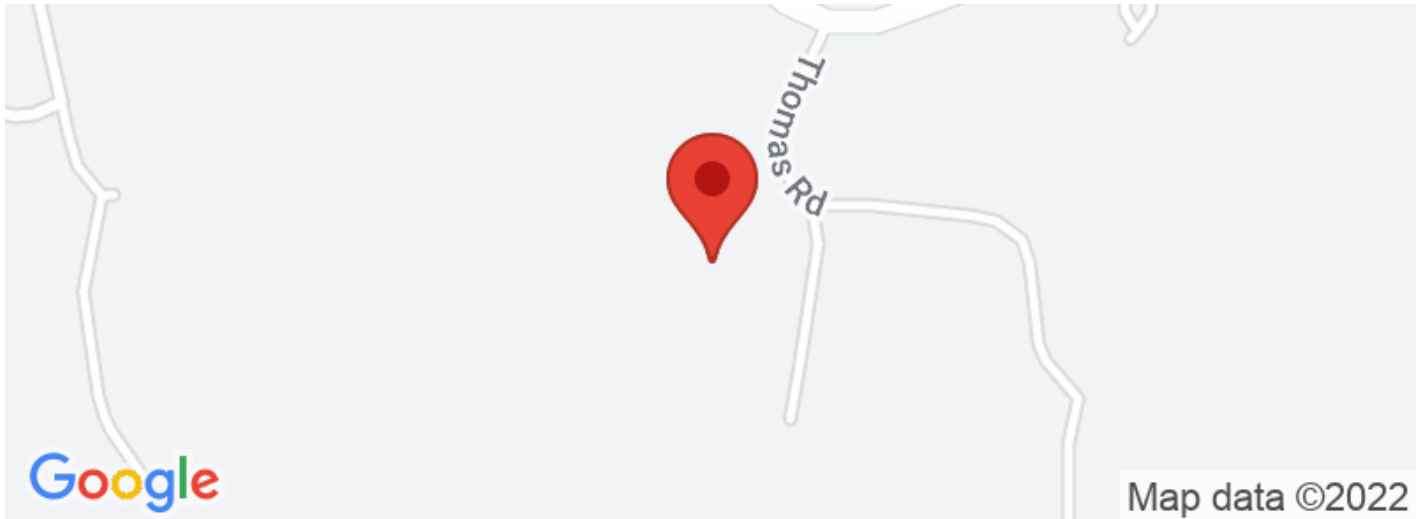
60 Acres +/- with a Waterfall, Creek, 2 Cabins, and Great Hunting!!
Leslie, AR / Searcy County





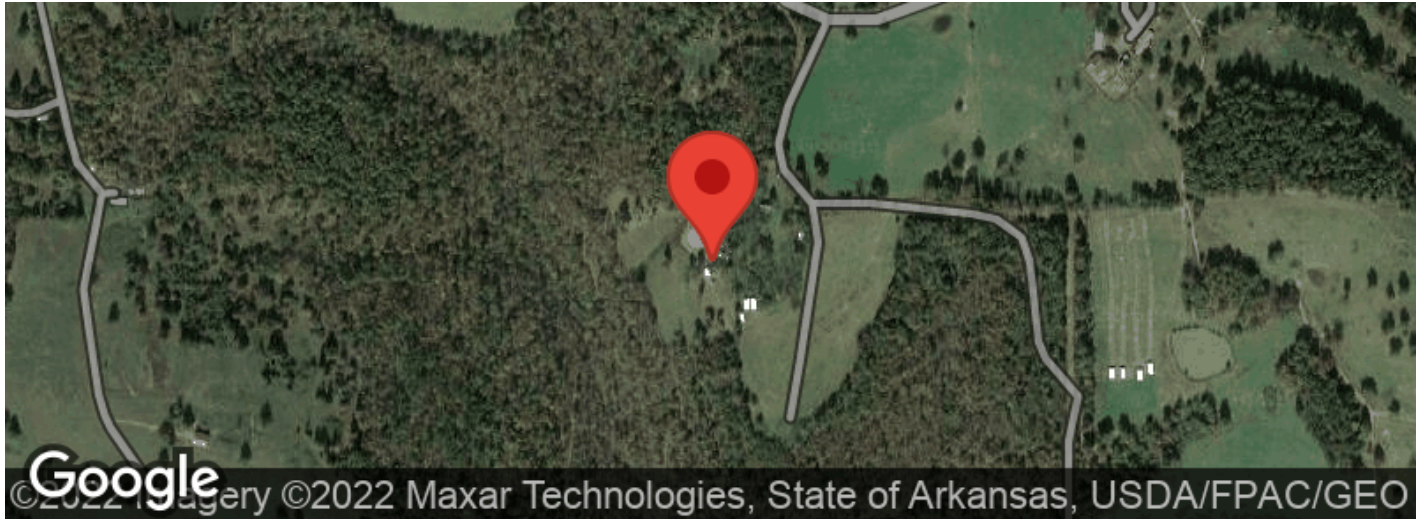
60 Acres +/- with a Waterfall, Creek, 2 Cabins, and Great Hunting!!
Leslie, AR / Searcy County

Locator Maps



60 Acres +/- with a Waterfall, Creek, 2 Cabins, and Great Hunting!!
Leslie, AR / Searcy County

Aerial Maps



**60 Acres +/- with a Waterfall, Creek, 2 Cabins, and Great Hunting!!
Leslie, AR / Searcy County**

LISTING REPRESENTATIVE

For more information contact:



Representative

Craig Loggins

Mobile

(870) 448-6218

Office

(870) 447-2135

Email

cloggins@mossyoakproperties.com

Address

3764 South Highway 65

City / State / Zip

Leslie, AR 72645

NOTES

MORE INFO ONLINE:

ArkansasLandForSale.com

NOTES

[illegible]

DISCLAIMERS

Information in this brochure is provided solely for information purposes and does not constitute an offer to sell or advertise real estate outside the states in which broker or agent licensed. The information presented has been obtained from sources deemed to be reliable, but is not guaranteed or warranted by the agent, broker, or the sellers of these properties. This offering is subject to errors, omissions, prior sale, price change, correction or withdrawal from the market without notice. All references to age, square footage, income, expenses, acreage, carrying capacity, and land classification, etc. are approximate. Prospective buyers are chargeable with and expected to conduct their own independent investigation of the information and the property and to rely only on those results. Sellers reserve the right to accept or reject any and all offers without liability to any buyer or cooperating broker.

Maps are provided for illustration purposes only, the accuracy is not warranted. Parcels on interactive maps are not adjusted to match aerial backgrounds. This information is for reference purposes only and is not a legal document. Data maps contain errors. The seller and seller's agent are making known to all potential buyers that there may be variations between the location of the existing fence lines and the legal description of the deeded property. Seller and seller's agent make no warranties with regard to the location of the fence lines in relationship to the deeded property lines, nor does the Seller make any warranties or representations with regard to the specific acreage contained within the fenced property lines. Seller is selling the property in an "as is" condition, which includes the location of the fences as they exist. Boundaries shown on the accompanying maps are approximate, based on county parcel data. The maps are not to scale. The accuracy of the maps is not guaranteed. Prospective buyers are encouraged to verify fence lines, deeded property lines and acreages using a licensed surveyor at their own expense.



Mossy Oak Properties Delta Land Management Co. LLC
2024 North Main Street
North Little Rock, AR 72114
(501) 604-4565
ArkansasLandForSale.com

