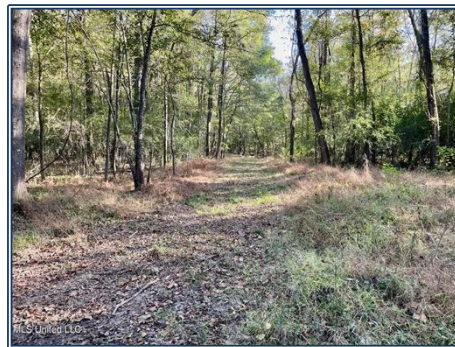
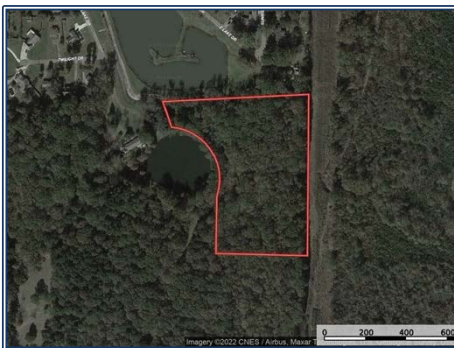




Approximately 8.89 acres located in Clinton, MS in the highly sought-after Clinton Public School District. This property has abundant wildlife and will make a great home site for someone wanting that country feel with the added convenience of being in town. Power/Sewage/Water available. Call today to take advantage of this rare opportunity to own residential acreage in the back of an established neighborhood in one of 'Mississippi's Most Livable Cities'.

East Lake Drive, Clinton, MS

32.326441, -90.309506 GPS



\$110,000

8.3 Acres
 MLS #4026491
 UC #23042-40261



Trey Meacham
 meachamandassociatesins@gmail.com
 Office: 601.250.0017
 Cell: 601.622.1974
 SouthernStatesRealty.com