



Slade Priest
 sladepriest1@gmail.com
 Office: (601) 250-0017
 Cell: (601) 888-0094
 SouthernStatesRealty.com



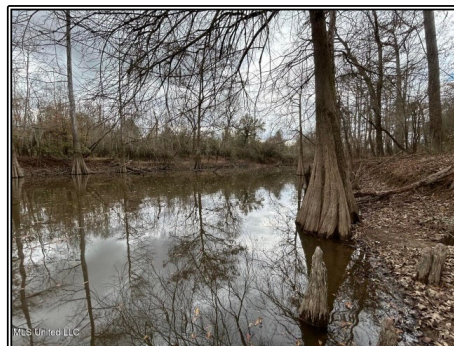
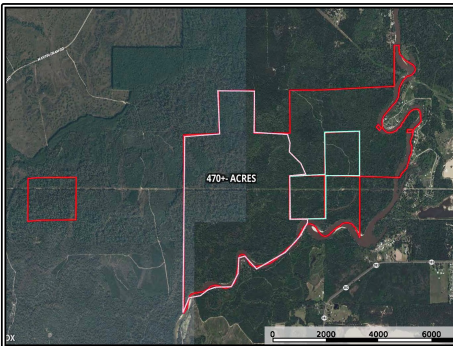
Southern States Realty



If you've been looking for a place that can do a little bit of everything, this 37-acre tract at 8024 Old Highway 24 in Centreville, MS is worth a serious look. The setup here is already dialed in whether you want a working farm, weekend getaway, or something with real development upside. Sitting on the property is a clean 1120± sq ft mobile home offering 3 bedrooms and 2 baths, perfect for a primary residence, rental, or camp. The improvements are what really set this place apart. There's a barn that's been built out with a full entertainment area, bar, and even a home gym—ideal for hosting friends, watching games, or just kicking back after a long day outside. In addition, you've got a large pole barn with horse stalls already in place, making this property ready to go for anyone with livestock or equestrian interests. The land itself lays well and is very usable, with a small pond adding both function and a good spot to relax or fish. Whether you want to keep it as a private farm and enjoy the space or take advantage of the layout and start dividing into smaller tracts, the potential here is real. Properties in this area with this kind of versatility are getting harder to find, especially in a location as strong as this. You're in a quiet, desirable part of Centreville with easy access to surrounding areas, making it convenient without giving up that country feel. Whether you're looking to live, invest, or develop, this one checks a lot of boxes and then some.

2600 Martin Tram Road, Reeves, LA

31.083632, -91.162119 GPS



\$940,000

470± Acres
 MLS #4148629



#HUNTINGLANDMAN