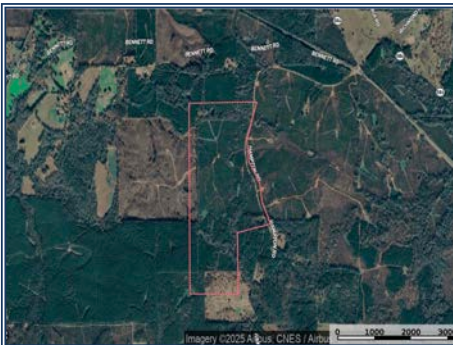




If you've been looking for land that is ready to hunt, this 150-acre property in southeastern Amite County checks all the boxes. With a mix of 12-year-old pine, mature hardwoods along a natural drain, and 7-year-old pine, it offers excellent habitat for wildlife. Six established food plots are already in place, and a solid interior road system makes it easy to move around the property. There's even a great spot on the south end to build a 6-acre pond and take this place to the next level. Power is available near the southern boundary line, and the property can be divided into three tracts (80, 35, and 35 acres), each with paved road frontage on Hampton Road. Located just a few minutes NW of Gillsburg and 12 west of I-55, this is a convenient getaway with serious hunting potential. Come enjoy the quiet county life of Amite County, MS!

Hampton Road, Liberty, MS

31.068790, -90.691000 GPS



**\$710,000**

150± Acres  
MLS #26-695



**Patrick Gibson**  
patrickgibson@gmail.com  
Office: (601) 250-0017  
Cell: (601) 248-9232  
**SouthernStatesRealty.com**