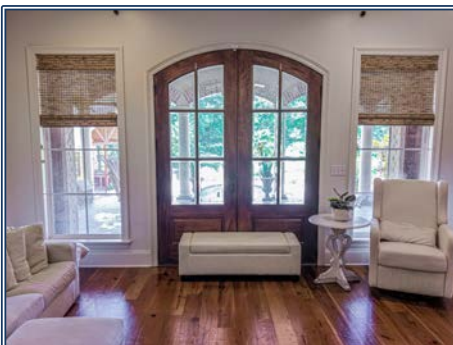
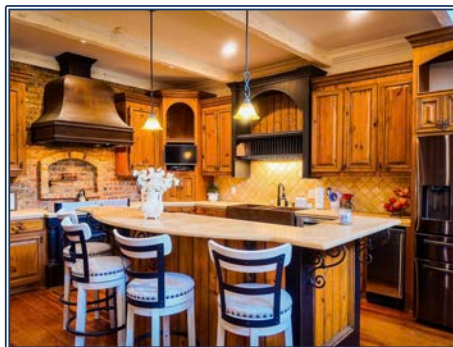


If you're searching for a custom home with acreage in the West Jones School District, this exceptional property deserves your attention. Situated on 3.0± beautifully landscaped acres near Laurel, Mississippi, this spacious home offers the perfect combination of privacy, convenience, and luxury living. Relax on the covered back porch overlooking the sparkling swimming pool and scenic mix of open and wooded land, creating your own private retreat. Inside, you'll find unique custom features including heart pine hardwood floors, exposed brick accents, large crown molding, a dedicated home office, built-in student study area, game room, central vacuum system, and abundant walk-in attic storage. Outdoor amenities are equally impressive with a pool house, outdoor kitchen, triple garage, circle drive, and workshop space for tools and lawn equipment. Conveniently located just minutes from Laurel, Ellisville, the Laurel Sportsplex, and Jones College, this home offers easy access to top-rated schools, healthcare facilities, shopping, dining, and employment opportunities throughout the Greater Pine Belt region. Whether you're looking for a family home with land, a private country retreat, or a property with room to entertain, this Jones County, Mississippi home has it all.

41 Pace Road, Ellisville, MS

31.679970, -89.263716 GPS



**\$824,950**

5 Bed/6 Bath  
3.0± Acres  
MLS #147331



**Don Bales**  
dbales.uchunting@gmail.com  
Office: (601) 250-0017  
Cell: (601) 606-8881  
SouthernStatesRealty.com