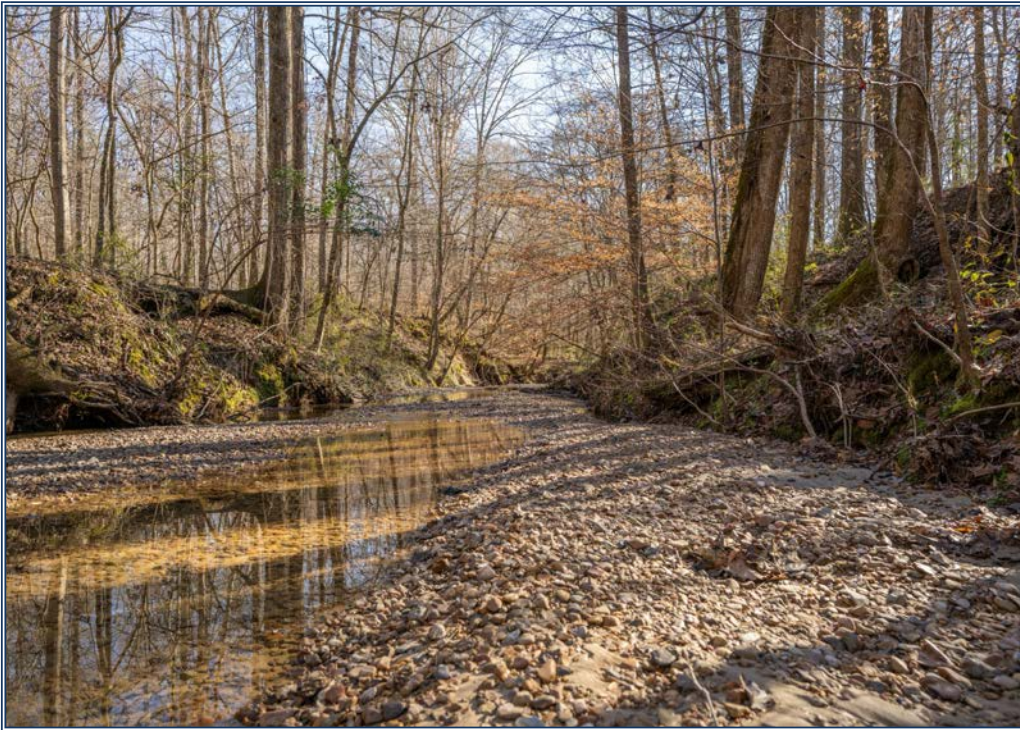




**Josh Beckham**  
beckhamjosh5@gmail.com  
Office: (601) 250-0017  
Cell: (318) 548-6377  
SouthernStatesRealty.com



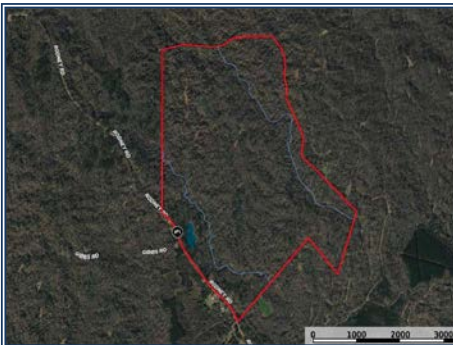
**Southern  
States Realty**



Hunting land for sale in Jefferson County, Mississippi. This 453± acre tract is located just west of Lorman, MS and only a few miles from the Mississippi River, offering frontage along Rodney Road. The property is loaded with wildlife, including mature whitetail deer, an abundant turkey population, and a variety of small game, along with a private fishing pond for year-round enjoyment. There are multiple potential camp site locations on this property. The property has two gated access points from Rodney Road and has been professionally managed for timber for decades. This tract features a diverse mix of timber, including cherry bark, red oak, white oak, poplar, ash, and more. There are two spring-fed, year-round creeks run throughout the property, complemented by a well-established internal road system providing excellent access. From a recreational standpoint, the property is phenomenal, with established food plots already in place ready for the next owner to step right in with ease. This 453± acre tract represents a rare opportunity to acquire a large, contiguous, and highly accessible Mississippi property that delivers recreation, income, and long-term investment potential. If you are looking for your next dream property, this one checks all of the boxes.

**Rodney Road, Lorman, MS**

**31.831422, -91.096300 GPS**



**\$2,083,000**

**453±  
Acres**

