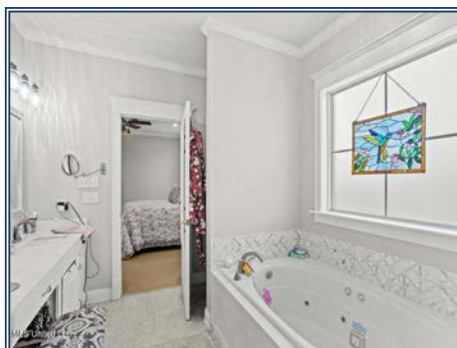
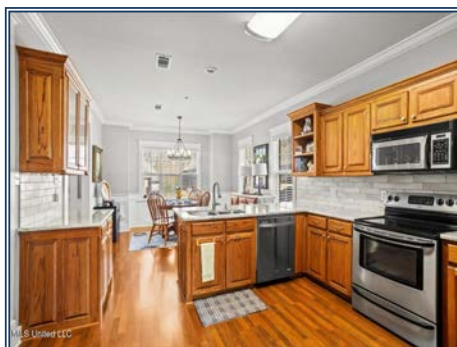
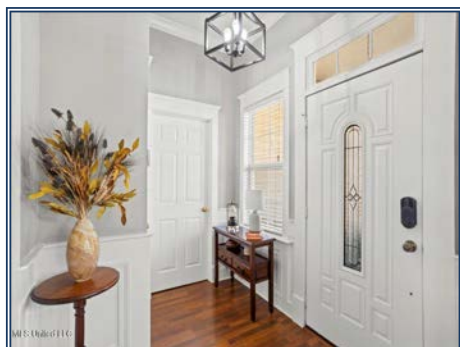




Tucked inside a small, gated community, this beautifully updated two-story brick traditional patio home offers comfort, style, and peace of mind in a setting that feels both private and welcoming. The home has been completely remodeled, featuring fresh interior paint, new flooring, granite countertops, and real wood cabinetry throughout. The thoughtful layout includes a cozy den anchored by a gas fireplace, built-ins for polished storage, and easy flow into a screened porch—perfect for morning coffee or evening wind-down. The light-filled kitchen is open and inviting, with a charming dining area and generous workspace ideal for everyday living or casual entertaining. The primary bedroom is conveniently located on the main level, complete with a spacious en suite bath. Upstairs, you'll find two additional bedrooms and a flexible office or workspace nook, ideal for remote work or hobbies. Additional highlights include a two-car garage, alarm system, and a covered back patio overlooking a small, wrought-iron fenced yard—just enough green space without the upkeep. The home is also wired for a portable generator capable of powering the entire downstairs, offering exceptional convenience and security. One of just six homes on a quiet cul-de-sac, this property is governed by restrictive covenants and an HOA with annual dues of approximately \$350. Located close to the charming downtown Summit area, with easy access to I-55 and within two hours of New Orleans, this move-in-ready home blends low-maintenance living with timeless appeal.

108 Pointe Drive, Summit, MS

31.279759, -90.471135 GPS



\$268,500

3 Bed/2.5 Bath
0.19± Acres
MLS #4138669



Kelly Parker
mkparker315@gmail.com
Office: (601) 250-0017
Cell: (601) 324-9760
SouthernStatesRealty.com