



Jeff Daughdrill

jeffdaughdrill@bellsouth.net

Office: (601) 250-0017

Cell: (601) 810-5511

SouthernStatesRealty.com



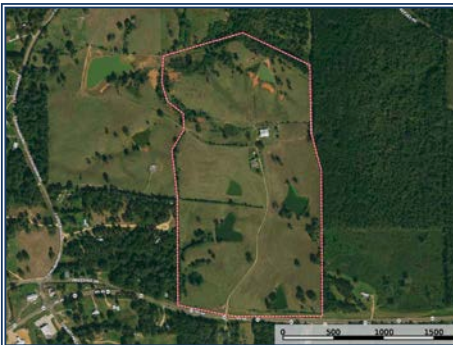
SOUTHERN STATES REALTY



REDUCED!!! Discover a fully-equipped farm and charming home just 10 miles from McComb, Mississippi, nestled in the Pricedale community. This gem, a 1.5-hour drive north of New Orleans, boasts a lovely brick house perched atop a hill with stunning views over 88 acres of rolling pastureland and six serene ponds. The recently remodeled residence features open living spaces, spacious bedrooms, a wet bar, art studio, and a beautifully equipped kitchen. Additional highlights include a front porch, screened living area, and outdoor patio for relaxation. The property includes a 70 x 80 equipment shed, fenced pasture fields, and an agricultural history of producing 110 large round bales per year. Ideal for horses and cattle, it also offers outdoor adventures like horseback riding, ATV excursions, fishing, and hunting. Viewings by appointment with 24-hour notice. Don't miss this opportunity to embrace rural living with modern comfort.

4165 Hwy 44, Tylertown, MS

31.294637, -90.287767 GPS



\$848,000

88± Acres
MLS #140168

