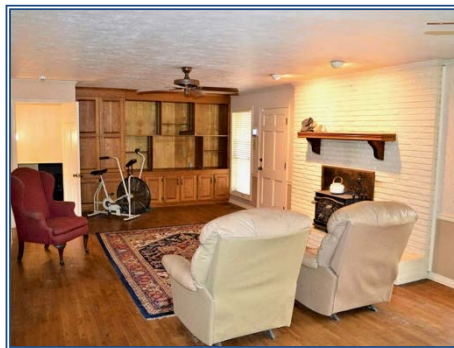
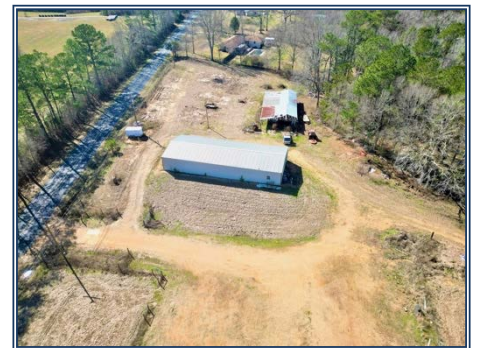




4 Bed, 2.5 Bath country home for sale situated off the road on 10 acres with a pond, metal shop, and other outbuildings. This home is located just west of McComb, MS and features over 3000 sqft of living space, double garage, paved driveway and 10 acres of open land that would be great for horses or cattle. The property has access from 2 roads, has high speed internet, and only minutes from town. This is a super nice family home with a large kitchen and large rooms throughout. The home is dated but seems to be structurally sound and move in ready and is priced to sell. The metal shop is 42' X 100' and features an approximately 10' x 14' roll up door and is Clear Span. Call today for a viewing!

3033 Park Drive Ext, McComb, MS

31.235472, -90.485811 GPS



\$249,500

10 Acres
MLS #137768
UC #23042-37768



Scott Campbell
scampbellunited@bellsouth.net
Office: (601) 250-0017
Cell: (601) 248-4595
SouthernStatesRealty.com