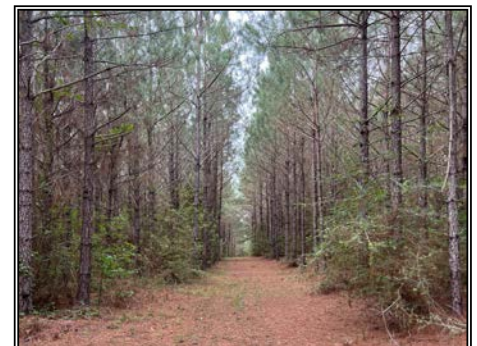




Fantastic Timber Investment Opportunity in Jackson Parish! This timber package for sale consists of 9 tracts totaling an expansive 519.7 acres. Strategically located within a 15-mile radius of Chatham, LA, this property offers convenience and accessibility. Additionally, it is ideally situated within 10 miles of the West Rock facility in Jonesboro Hodge, LA, ensuring efficient transportation of timber resources. Further enhancing its value, the property is a mere 20 miles from the Weyerhaeuser Mill in Dodson, LA, and just 25 miles from Graphic Packaging in West Monroe, LA. For those eyeing the broader market, the proximity to the brand new Bienville Lumber Mill in Taylor, LA is 35 miles away while the West Fraser Mill in Huttig, AR is only 70 miles away, opening up additional avenues for timber sales. Currently under pine timber management, this investment holds promise for sustainable growth and profitability. The existing management practices ensure a solid foundation for continued timber cultivation and harvesting. Moreover, this property presents an exciting opportunity for hunting lease arrangements, offering the potential for additional income streams. The diverse landscape and abundant wildlife make it an attractive prospect for hunting enthusiasts. Whether you're a seasoned investor looking to expand your portfolio or an experienced entrepreneur seeking lucrative opportunities, this Jackson Parish timber package checks all the boxes. Don't miss out on this chance to secure a prime asset in the heart of Louisiana's timber country!

**1 Jackson Parish Road, Chatham, LA**

**32.389417 -92.497500 GPS**



**519.7± Acres  
MLS #209839  
\$1,665,000**



**Hunter Smith**  
hunter@hunterrenegycorp.com  
Office: (601) 250-0017  
Cell: (318) 245-6965  
SouthernStatesRealty.com



**Josh Beckham**  
beckhamjosh5@gmail.com  
Office: (601) 250-0017  
Cell: (318) 548-6377  
SouthernStatesRealty.com