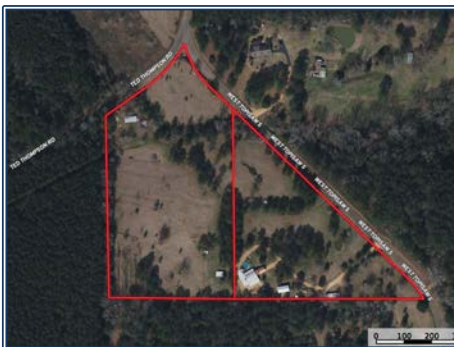




This one-of-a-kind rustic barndominium offers the perfect blend of country charm and modern comfort, set on a beautifully functional property in the highly sought-after North Pike School District in Summit, Mississippi. With 2,083 square feet of living space, this two-story home features 3 bedrooms and 3 full bathrooms, thoughtfully designed for both everyday living and entertaining. The interior showcases warm, rustic character with unique touches throughout, while the spacious layout provides flexibility for families of all sizes. A standout feature is the inviting bonus room/mancave, complete with a cozy wood-burning fireplace—perfect for relaxing evenings or hosting guests. The home is also equipped with a whole-house generator, offering peace of mind year-round. Step outside and enjoy everything this property has to offer. The fully fenced yard is ideal for livestock or pets, making it a true homesteader's dream. You'll find a chicken coop, greenhouse, and plenty of room to expand your outdoor lifestyle. Cool off in the above-ground pool, surrounded by a custom-built deck designed for summer gatherings and outdoor enjoyment. For those who love the outdoors, the property also includes two ponds and a deer stand, perfect for fishing or hunting right in your backyard. Need space for projects or storage? The 20x40 metal workshop on a slab foundation features a loft area, offering ample room for tools, hobbies, or equipment. Additionally, the property includes three RV hookups, making it ideal for visitors or additional income potential. This rare property combines rural living with modern convenience, offering endless opportunities to live, work, and play—all in one place.

7019 W Topisaw Road S, Summit, MS

31.302925, -90.310713 GPS



\$415,000

3 Bed/3 Bath
12.98± Acres
MLS #4144398



Danielle Burnette
dandynburn@gmail.com
Office: (601) 250-0017
Cell: (601) 249-7061
SouthernStatesRealty.com