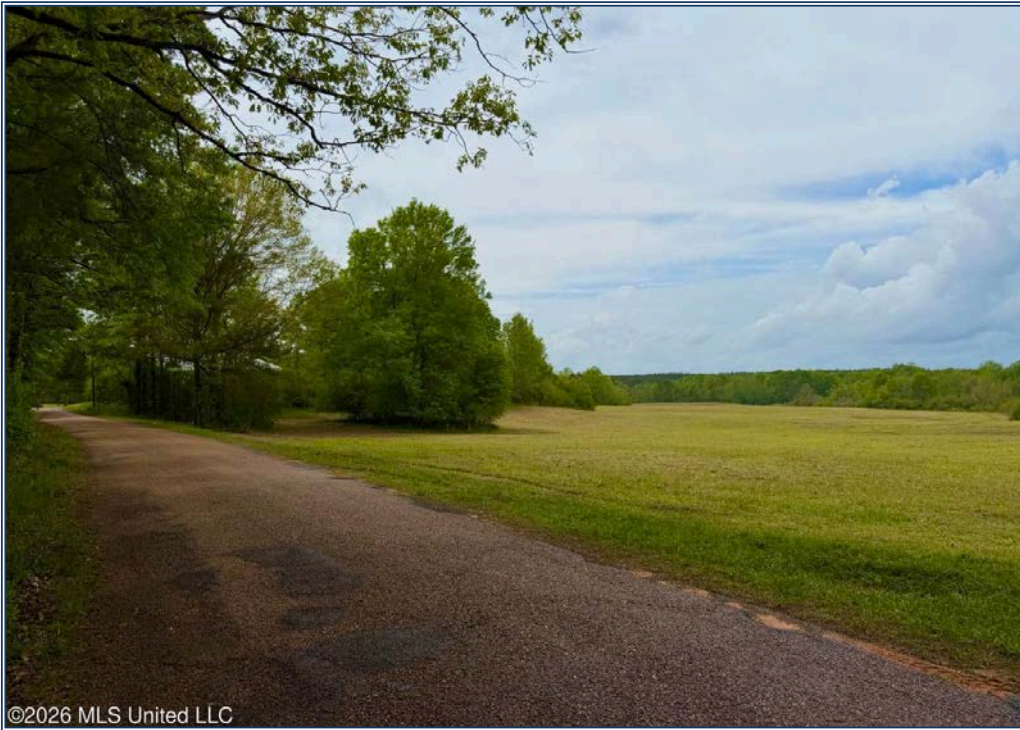




Brandt Watson
 bwatsonuc@outlook.com
 Office: 601.250.0017
 Cell: 601.341.8618
 SouthernStatesRealty.com



**Southern
States Realty**

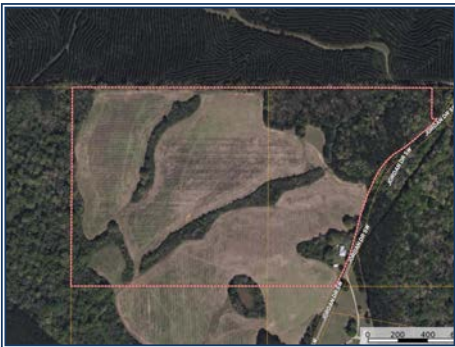


©2026 MLS United LLC

64+- acres in the West Lincoln School District, located in the peaceful Smithdale community. This beautiful tract features approximately 45+- acres of rolling, improved pasture, complemented by mature timber and natural drains lined with large oak trees. The way the topography lays sets up the opportunity to build a 8-10 acre pond right in the middle of the property. This land was row-cropped just a few years ago and is ready for cattle, farming, recreation, or your dream homesite. Multiple elevated homesites overlook the pasture, offering the kind of long-range views and quiet setting that are getting harder to find. An original 1910 shotgun-style farmhouse sits along Jordan Drive and offers the opportunity to restore a piece of history into a charming country home. Surrounded by large landowners, this tract provides a rare sense of privacy and seclusion. Whether you're looking to build, farm, hunt, or raise a family, this property offers the space and setting to do it all. Located just 20 minutes from Summit and McComb, you can enjoy country living without sacrificing access to town.

3404 SW Jordan Drive, Smithdale, MS

31.372560, -90.618880GPS



©2026 MLS United LLC



©2026 MLS United LLC



©2026 MLS United LLC



©2026 MLS United LLC



©2026 MLS United LLC

\$383,936

**64± Acres
MLS #4144935**

