

**Stuart Hemphill**

stuarthemphill58@gmail.com

Office: (601) 250-0017

Cell: (601) 248-7637

SouthernStatesRealty.com



**Southern  
States Realty**

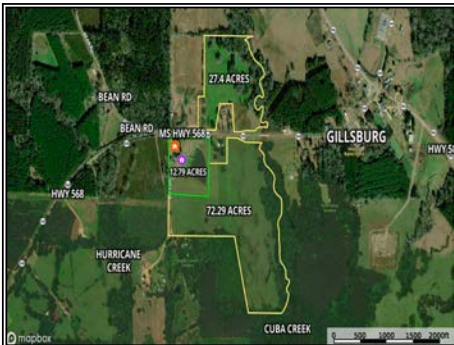


Beautiful 4BR/3BA farmhouse estate on 99.69± acres in the Gillsburg community, offering the perfect combination of country living, productive farmland, and recreational opportunities. Originally part of an award-winning dairy farm, this well-maintained home sits atop a scenic hill overlooking Cuba Creek bottomland with breathtaking views. The property features rolling fenced pastureland, a stocked 2± acre pond, Cuba Creek frontage on both tracts, a hay barn, repurposed dairy barn with workshop and storage, and an RV building with electrical hookup and mini-split HVAC. The acreage includes 72.29± acres south of Hwy 568 and 27.40± acres north of Hwy 568, providing excellent opportunities for cattle, horses, hay production, hunting, and recreation. A gated cattle lane beneath the highway bridge allows easy movement of livestock between the two tracts. Inside, the home offers a spacious family room, sunroom with pond views, office, formal dining room, large utility room, and an updated kitchen featuring granite countertops, custom cabinetry, stainless appliances, and an island workspace. The primary suite includes private bath access and direct sunroom entry, while three additional bedrooms provide plenty of space for family and guests. With extensive frontage on Hwy 568 and Hughes Road, this rare Mississippi country estate is ideal for a family homestead, hobby farm, cattle operation, or private rural retreat.

©2026 MLS United LLC

**6008 MS Hwy 568, Osyka, MS**

**31.025211, -90.665494 GPS**



©2026 MLS United LLC

©2026 MLS United LLC

©2026 MLS United LLC

**\$925,000**

**99.69± Acres  
4 Bed/3 Bath  
MLS #4150584**

