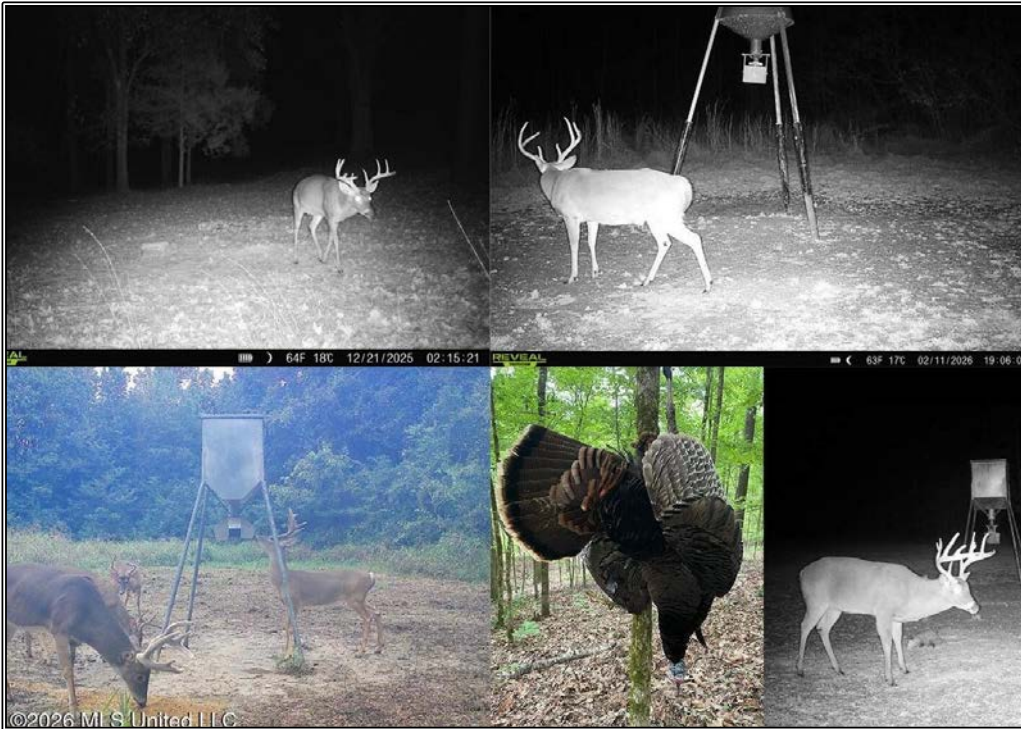




Caleb Armstrong
 REALTOR@UC Landpro
 calebarms24@gmail.com
 Office: (601) 250-0017
 Cell: (318) 680-8177
 SouthernStatesRealty.com



**Southern
 States Realty**



Take a look at this 80+- acre tract in Jefferson County, MS located just 35 minutes north of Natchez, offering the perfect mix of convenience and seclusion. Tucked away on a dead end road between Highway 61 and Highway 553, this place gives you all the privacy you want while still being close enough to run into town for dinner, supplies, or a night out. The property features a well-kept 1300 sqft brick camp on a slab with 3 bedrooms and 2 bathrooms, making it a comfortable setup for family, friends, or hunting weekends. Whether you're staying a night or a week, it's move-in ready and built for low maintenance. Just behind the camp you'll find a 35x30 skinning shed and tractor shed, giving you plenty of room to clean game, store equipment, and keep everything organized. The land itself is what really sets this property apart. With 80+- acres of prime habitat and a proven history of big deer and strong turkey numbers, this is the kind of place that consistently produces. The layout hunts big and offers multiple stand locations, making it ideal whether you're hunting alone or with a group. One of the standout features is the .63 miles of Mud Island Creek frontage. This isn't just a small creek--it's a beautiful stretch with sandbars perfect for relaxing, hanging out with family, or cooling off after a hunt. It adds a whole other level of year-round enjoyment to the property that's hard to find. If you've been looking for a turnkey hunting property with a solid camp, great access, and strong wildlife in a proven area, this one checks all the boxes. Properties with this kind of setup, creek frontage, and location this close to Natchez don't come around often.

2484 Freeman Road, Fayette, MS

31.742788, -91.127408 GPS



\$450,000

**80± Acres
 3 Bed/2 Bath
 MLS #4145844**

